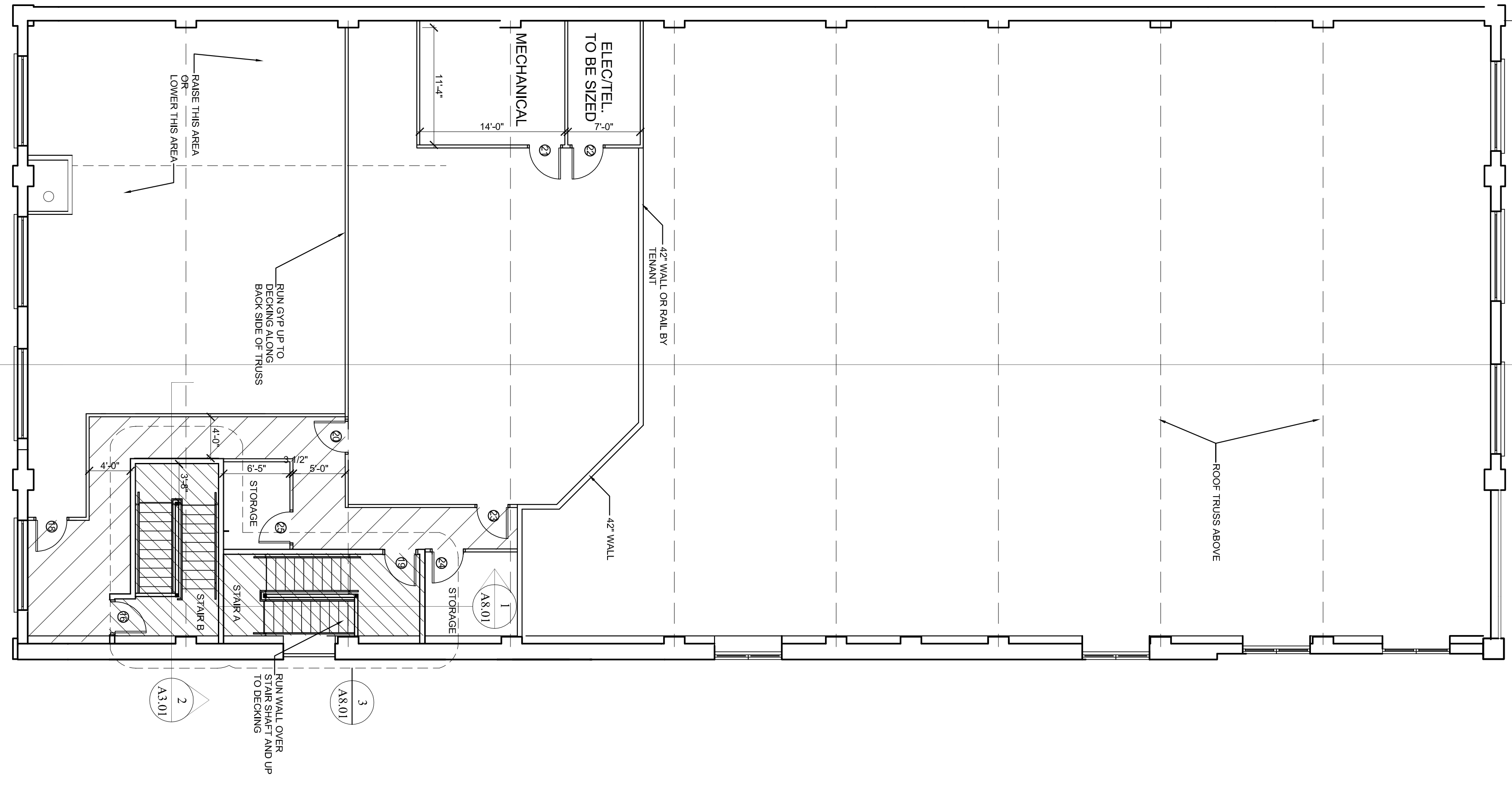


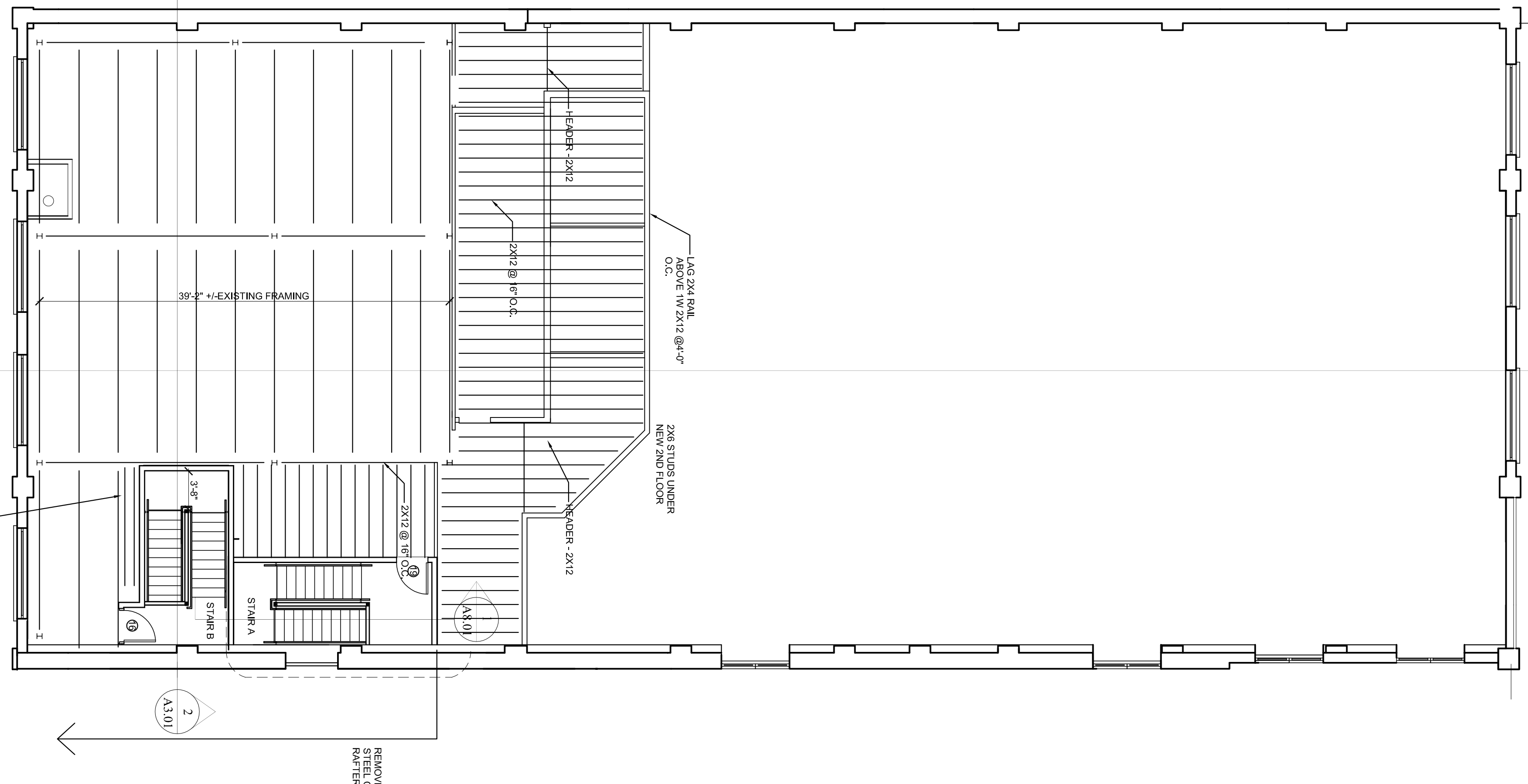
West Wing  
 1st Floor - 8,885 s.f.  
 2nd Floor - 3,912 s.f.  
 Total - 12,797

SEALED CONCRETE FLOORS IN ALL SPACES OTHER THAN BATHROOMS  
 1 HR CEILING  
 VCT FLOORING  
 ASPHALT

3 FIRST FLOOR RCP  
 1/8" = 1'-0"  
 A1.02



2 SECOND FLOOR RCP  
 1/8" = 1'-0"  
 A1.02



1 SECOND FLOOR FRAMING PLAN  
 1/8" = 1'-0"  
 A1.02

<b>A1.02</b>	Date: 8-13-2014	Scale: 1/8" = 1'-0"	Revisions:	Project: <b>BRICK NORTH WEST WING</b>	Architect: <b>ARCHETYPE</b>	Consultant:	Prepared For:
	<b>FRAMING PLAN AND RCP</b>			THOMPSON'S POINT, PORTLAND ME	48 Union Wharf Portland, Maine 04101 (207) 772-6022 Fax (207) 772-4056		