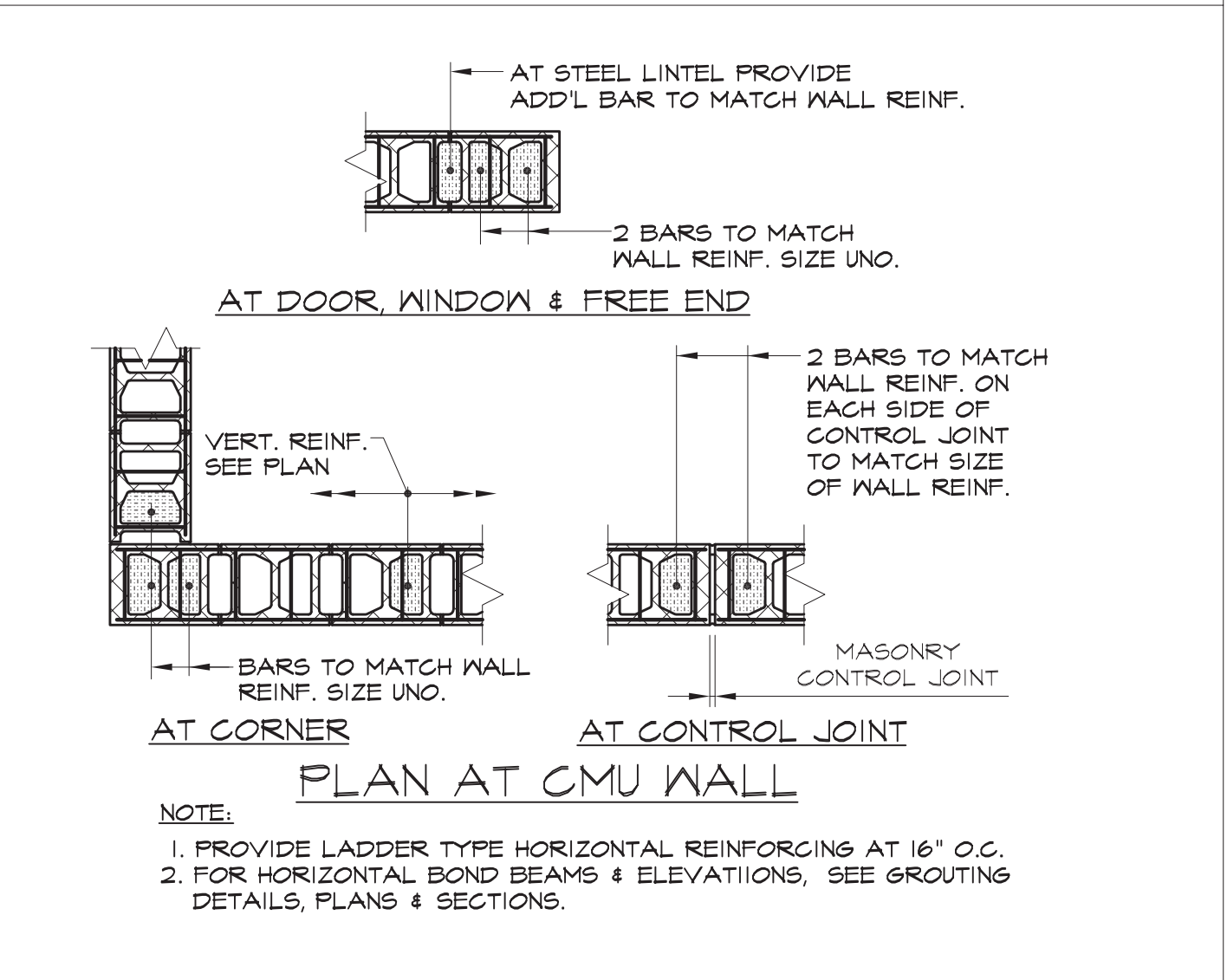
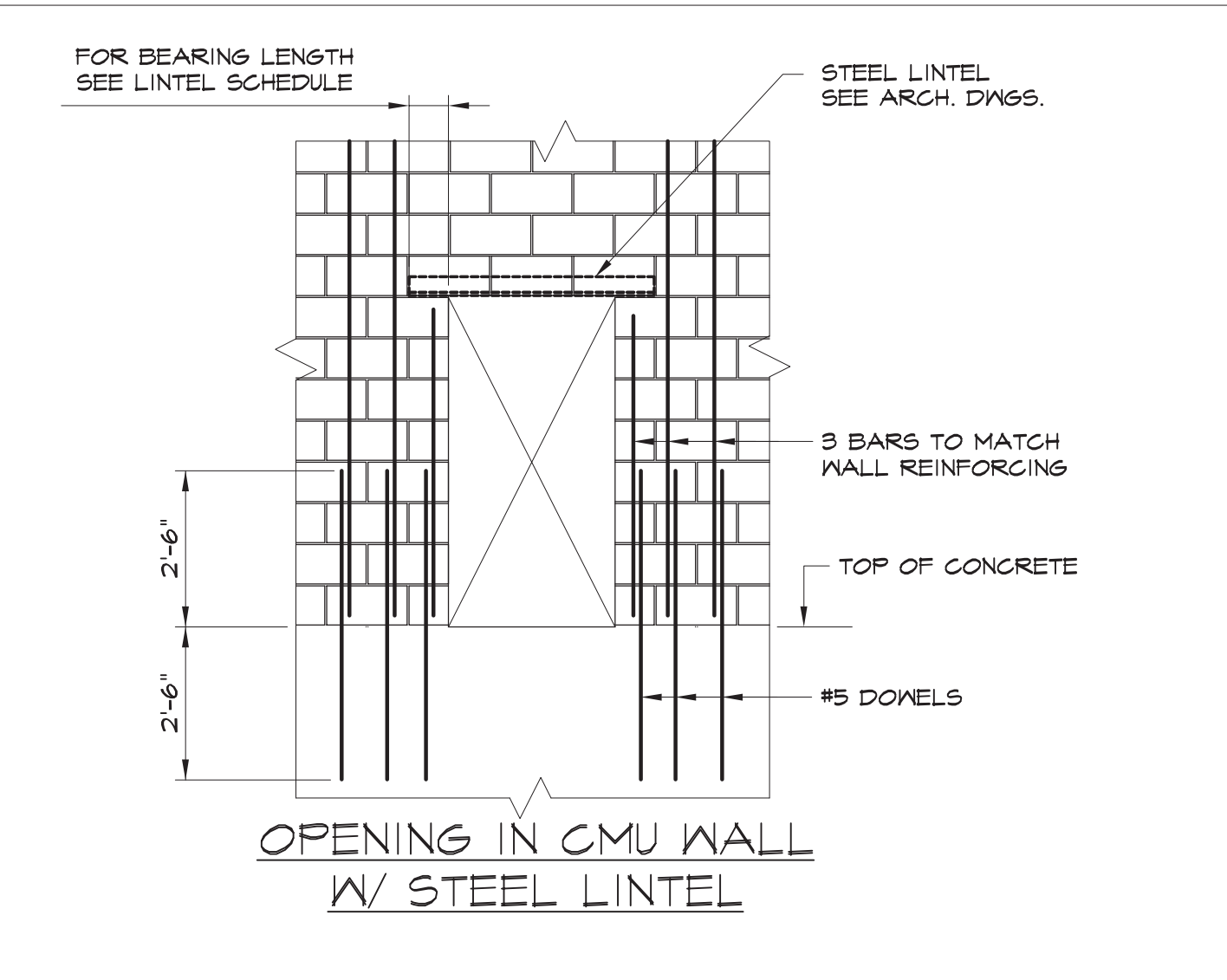
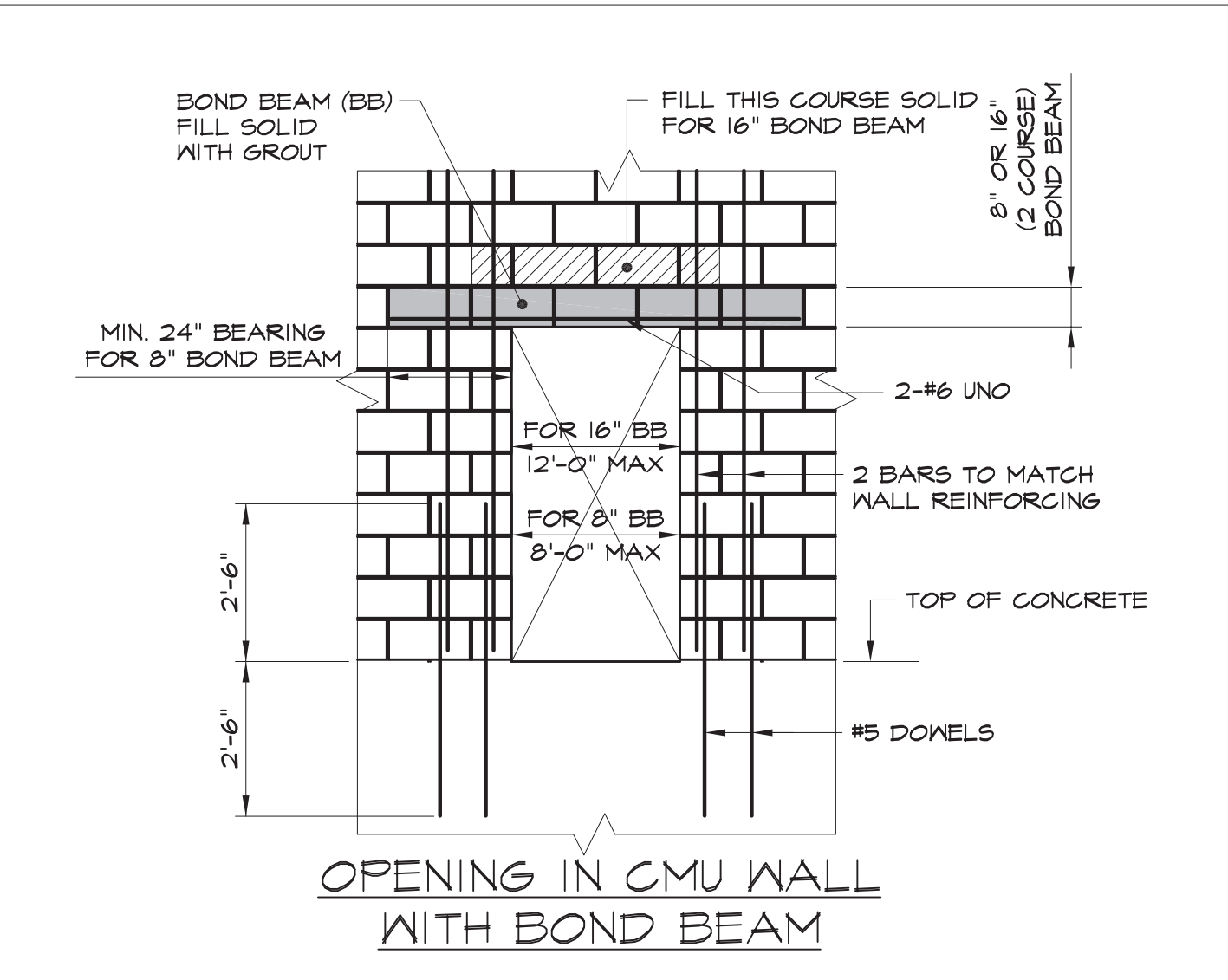
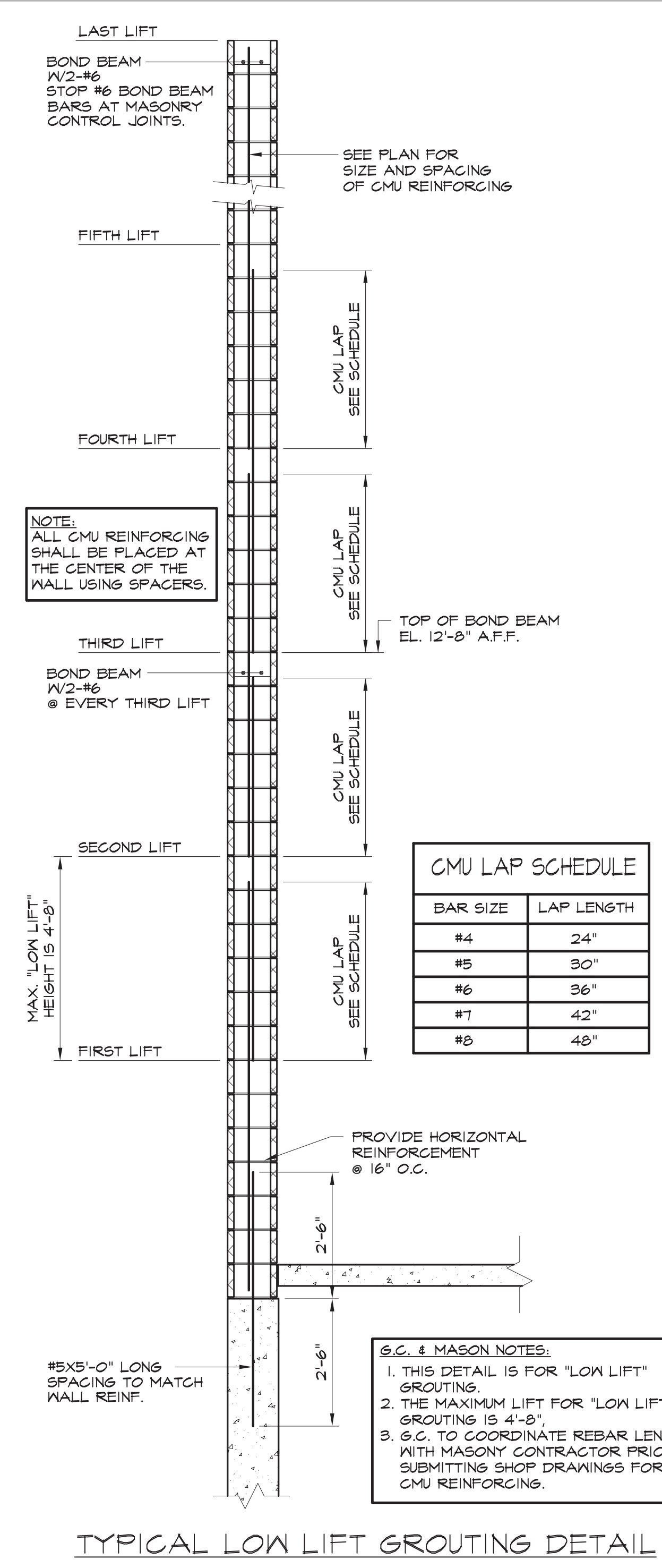


LOOSE LINTEL SCHEDULE

OPENING	LINTEL	BEARING EACH END	REMARKS
3'-6" OR LESS	2 1/2 x 3 1/2 x 1/4	4"	---
OVER 3'-6" THRU 5'-6"	4 x 3 1/2 x 1/4	6"	LLV
OVER 5'-6" THRU 7'-6"	6 x 3 1/2 x 3/8	6"	LLV
OVER 7'-6" THRU 8'-0"	6 x 3 1/2 x 3/8	6"	LLV

- NOTES:
- WHERE ANGLE LINTELS ARE REQUIRED, PROVIDE ONE ANGLE FOR EACH 4' OR LESS THICKNESS OF MASONRY.
  - FOR OPENINGS OVER 6'-0", PROVIDE SOLID MASONRY JAMB UNDER LINTEL AT EACH SIDE OF OPENING.
  - LINTELS INDICATED ON PLAN SUPERSEDE THE REQUIREMENTS OF THIS SCHEDULE.
  - ALL EXTERIOR LINTELS SHALL BE HOT DIPPED GALVANIZED.



CMU LAP SCHEDULE

BAR SIZE	LAP LENGTH
#4	24"
#5	30"
#6	36"
#7	42"
#8	48"

- G.C. & MASON NOTES:
- THIS DETAIL IS FOR "LOW LIFT" GROUTING.
  - THE MAXIMUM LIFT FOR "LOW LIFT" GROUTING IS 4'-8".
  - G.C. TO COORDINATE REBAR LENGTHS WITH MASONRY CONTRACTOR PRIOR TO SUBMITTING SHOP DRAWINGS FOR CMU REINFORCING.