

Prepared For:
**Thompson's Point
Development
Company Inc.**

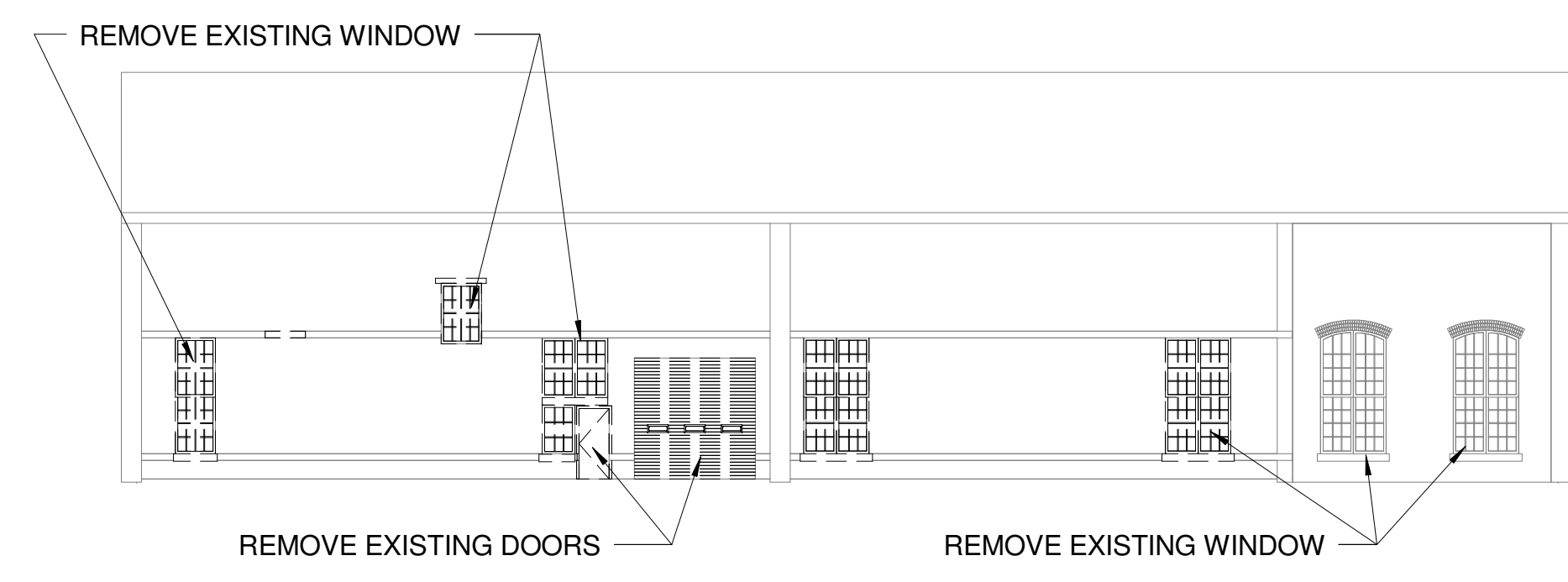
Consultant:
**ARCHETYPE
architects**
48 Union Wharf Portland, Maine 04101
(207) 772-6022 Fax (207) 772-4056

Architect:
Brick North
Thompson's Point Portland, ME

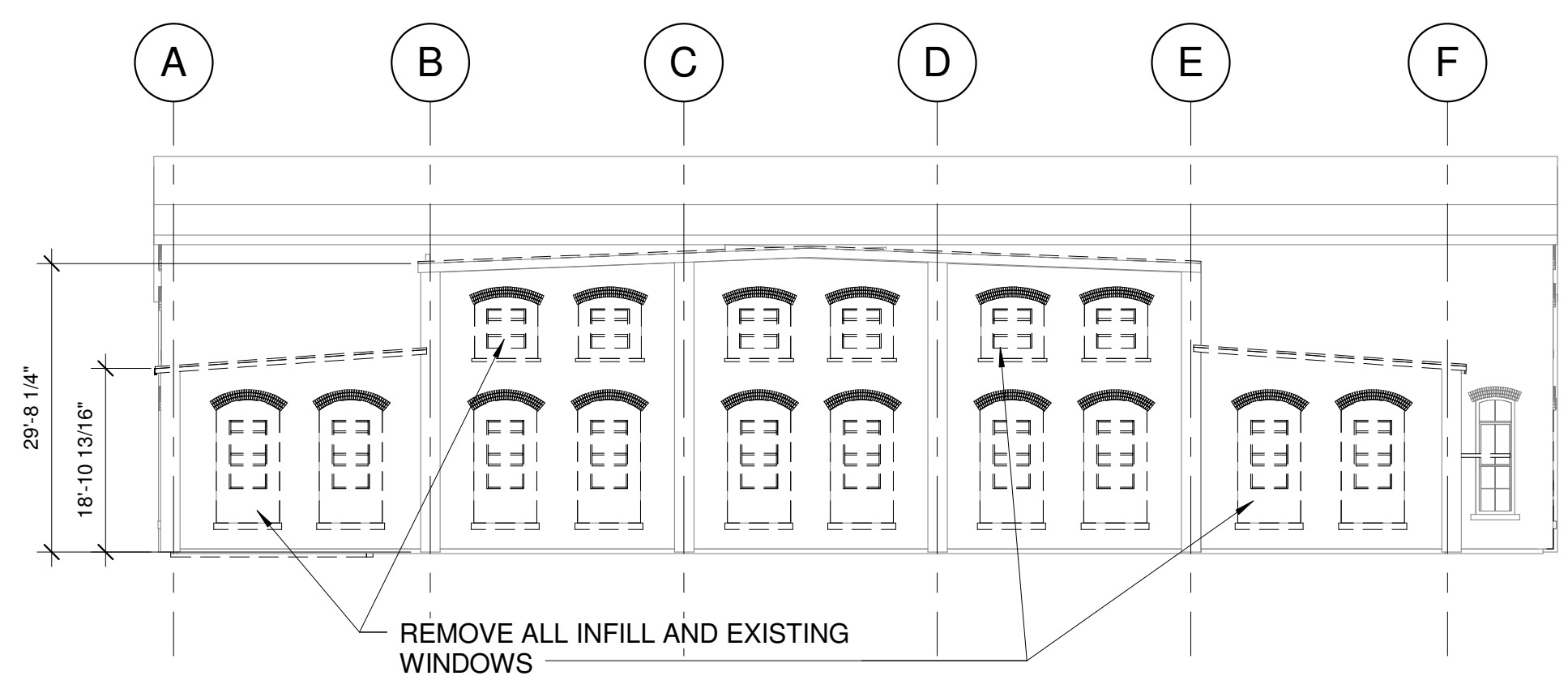
Project:
Brick North

Revisions:
Date: 12-5-2013
Scale: 1/16" = 1'-0"
Demolition Plan

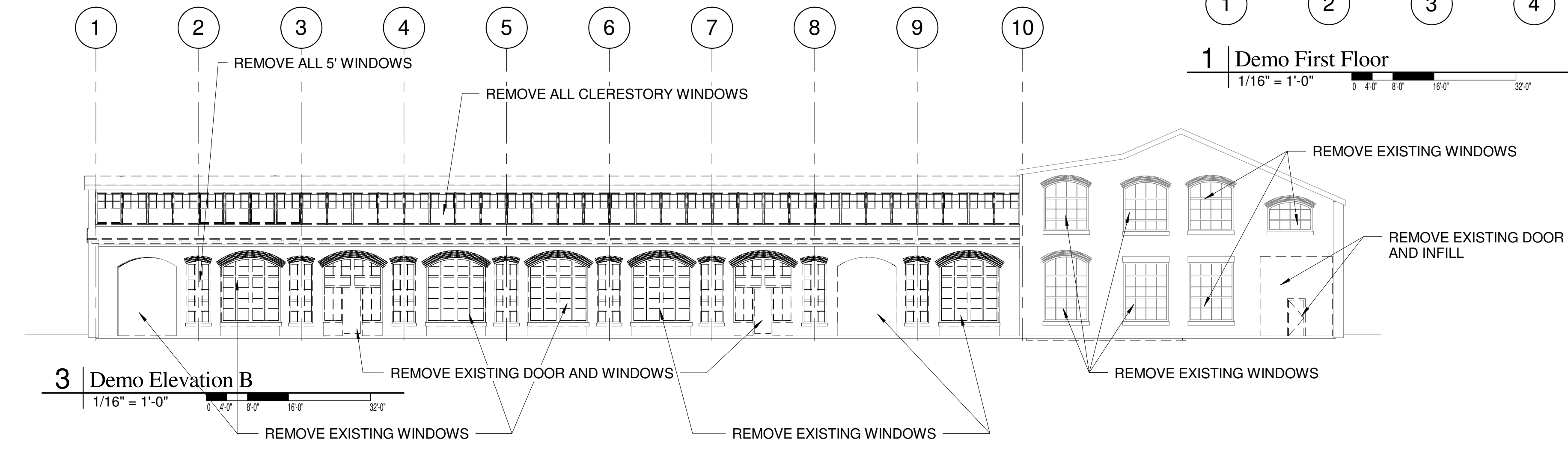
AD1.01



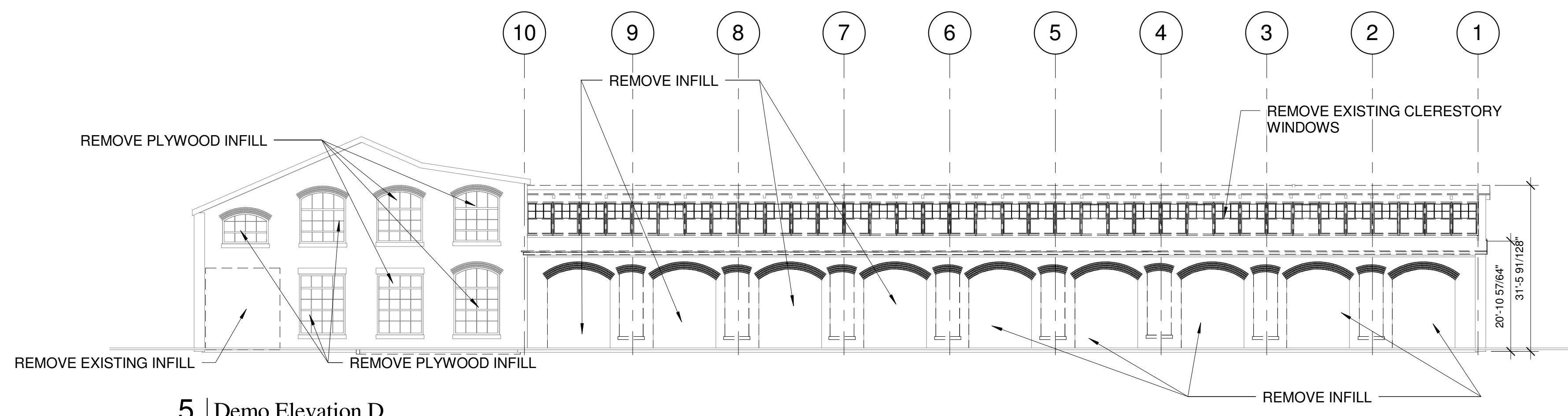
2 Demo Elevation A
1/16" = 1'-0"
0 4'-0" 8'-0" 16'-0" 32'-0"



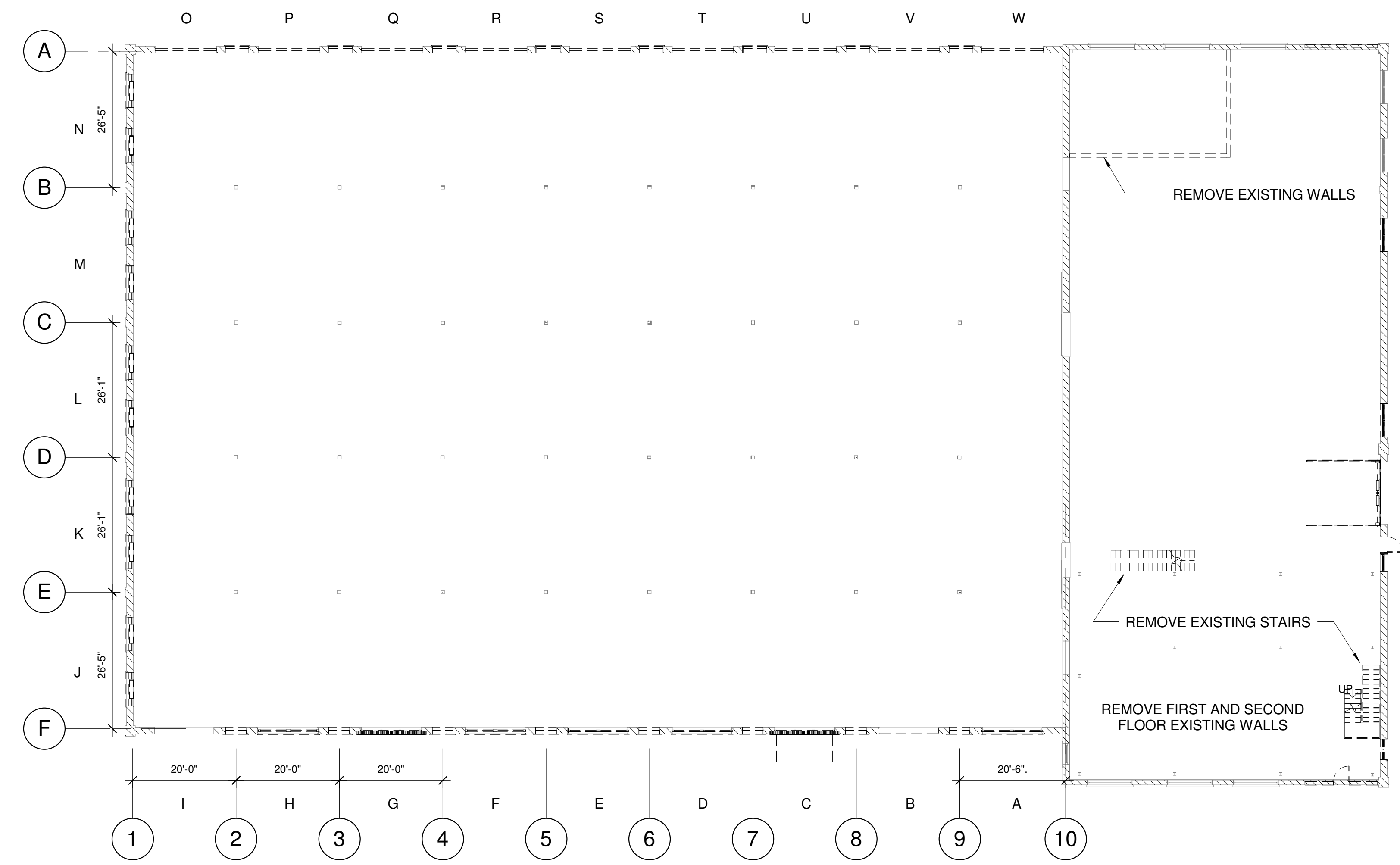
4 Demo Elevation C
1/16" = 1'-0"
0 4'-0" 8'-0" 16'-0" 32'-0"



3 Demo Elevation B
1/16" = 1'-0"
0 4'-0" 8'-0" 16'-0" 32'-0"



5 Demo Elevation D
1/16" = 1'-0"
0 4'-0" 8'-0" 16'-0" 32'-0"



1 Demo First Floor
1/16" = 1'-0"
0 4'-0" 8'-0" 16'-0" 32'-0"

REMOVE EXISTING WALLS

REMOVE EXISTING STAIRS

REMOVE FIRST AND SECOND FLOOR EXISTING WALLS

REMOVE EXISTING WINDOWS

REMOVE EXISTING DOOR AND INFILL

REMOVE EXISTING WINDOWS

REMOVE EXISTING CLERESTORY WINDOWS

REMOVE INFILL