

Prepared For:
**Thompson's Point
 Development
 Company Inc.**

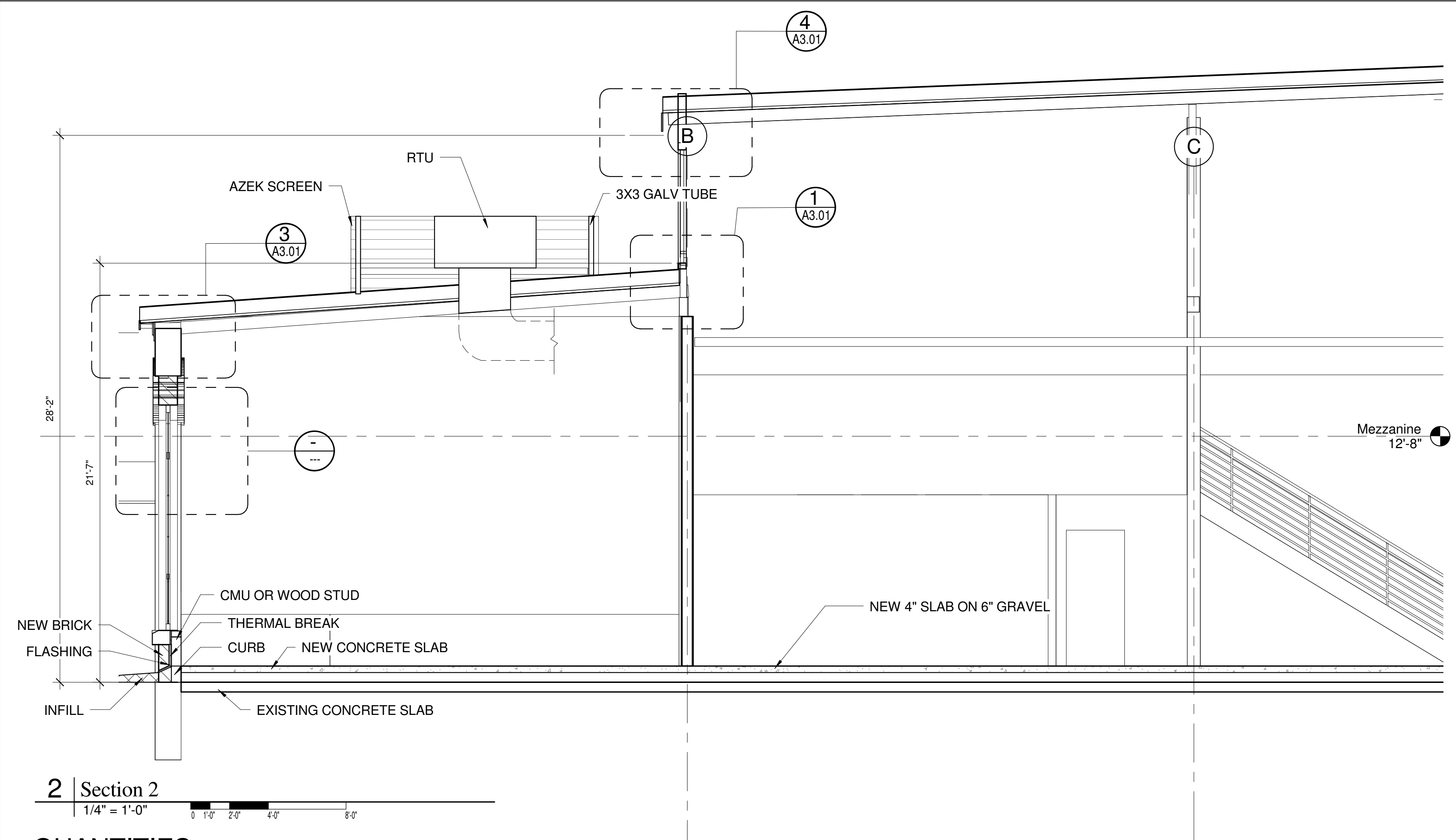
Consultant:
**ARCHETYPE
 architects**
 48 Union Wharf Portland, Maine 04101
 (207) 772-6022 Fax (207) 772-4056

Architect:
Brick North
 Thompson's Point Portland, ME

Project:
Brick North

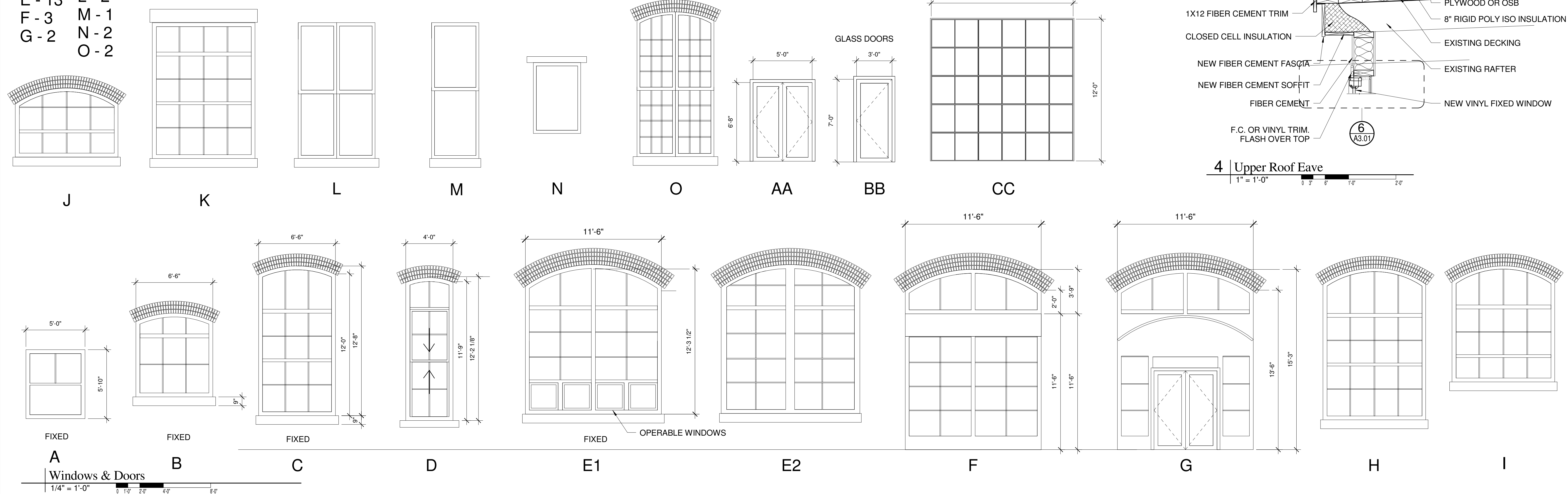
Date: 12-5-2013
 Scale: As indicated

Building Section, Wall
 Details & Window Types
A3.01

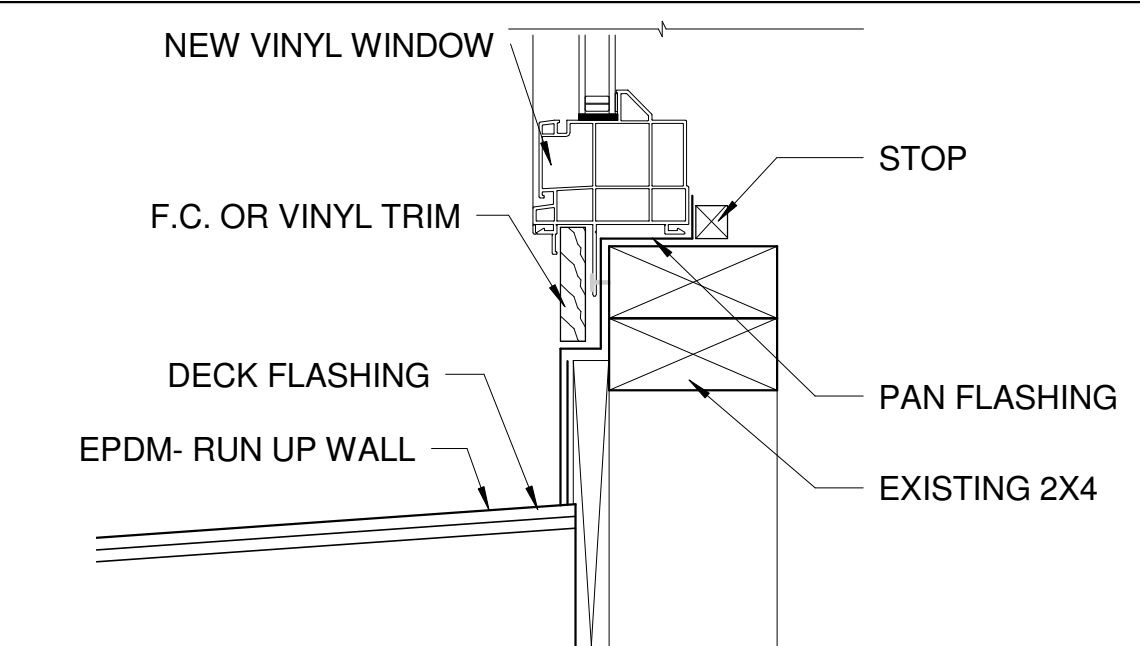


2 Section 2
 1/4" = 1'-0"

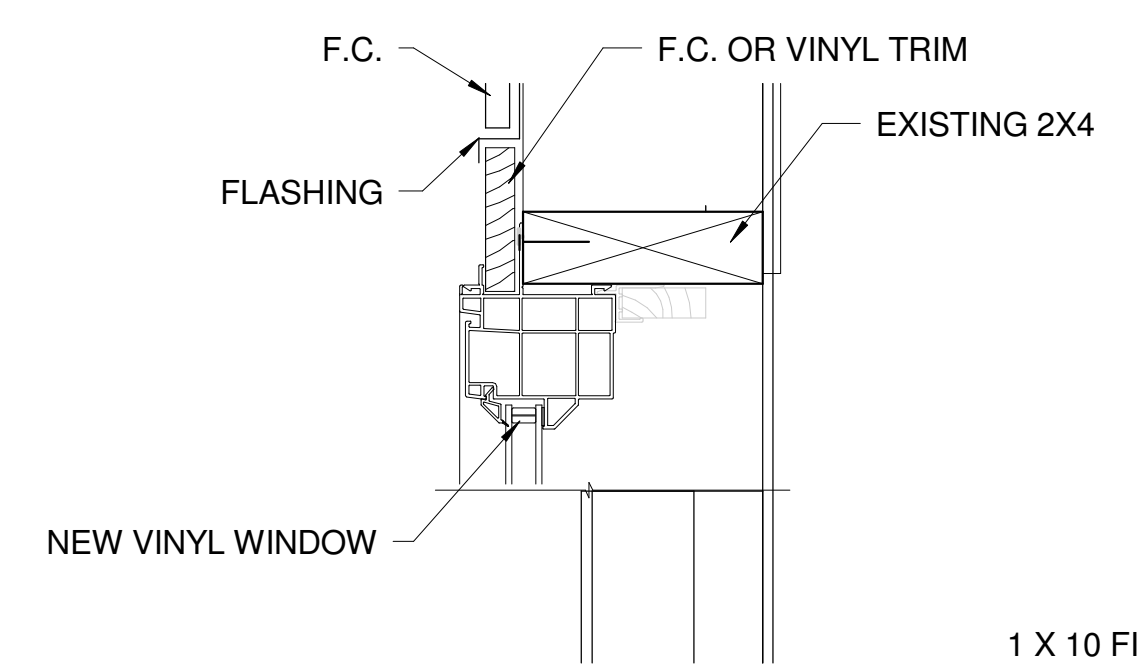
- QUANTITIES-**
 A - 72 H - 2
 B - 6 I - 6
 C - 10 J - 2
 D - 16 K - 4
 E - 13 L - 2
 F - 3 M - 1
 G - 2 N - 2
 O - 2



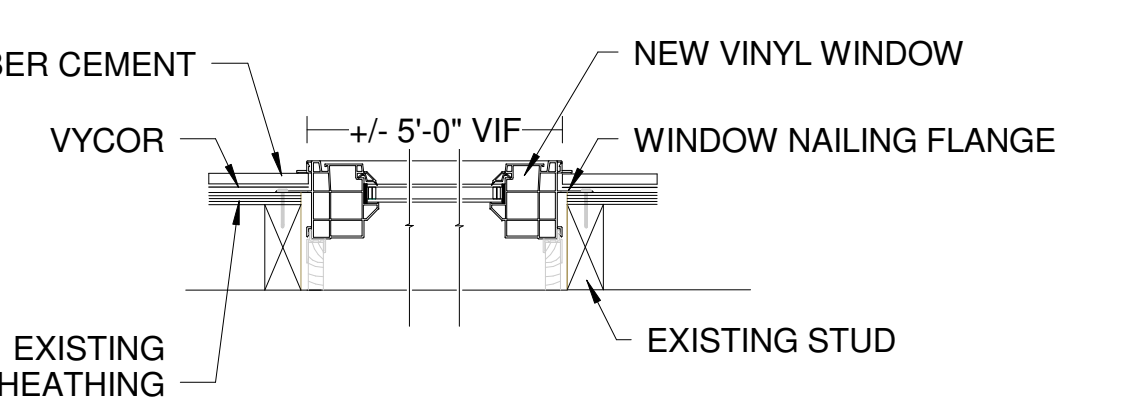
A Windows & Doors
 1/4" = 1'-0"



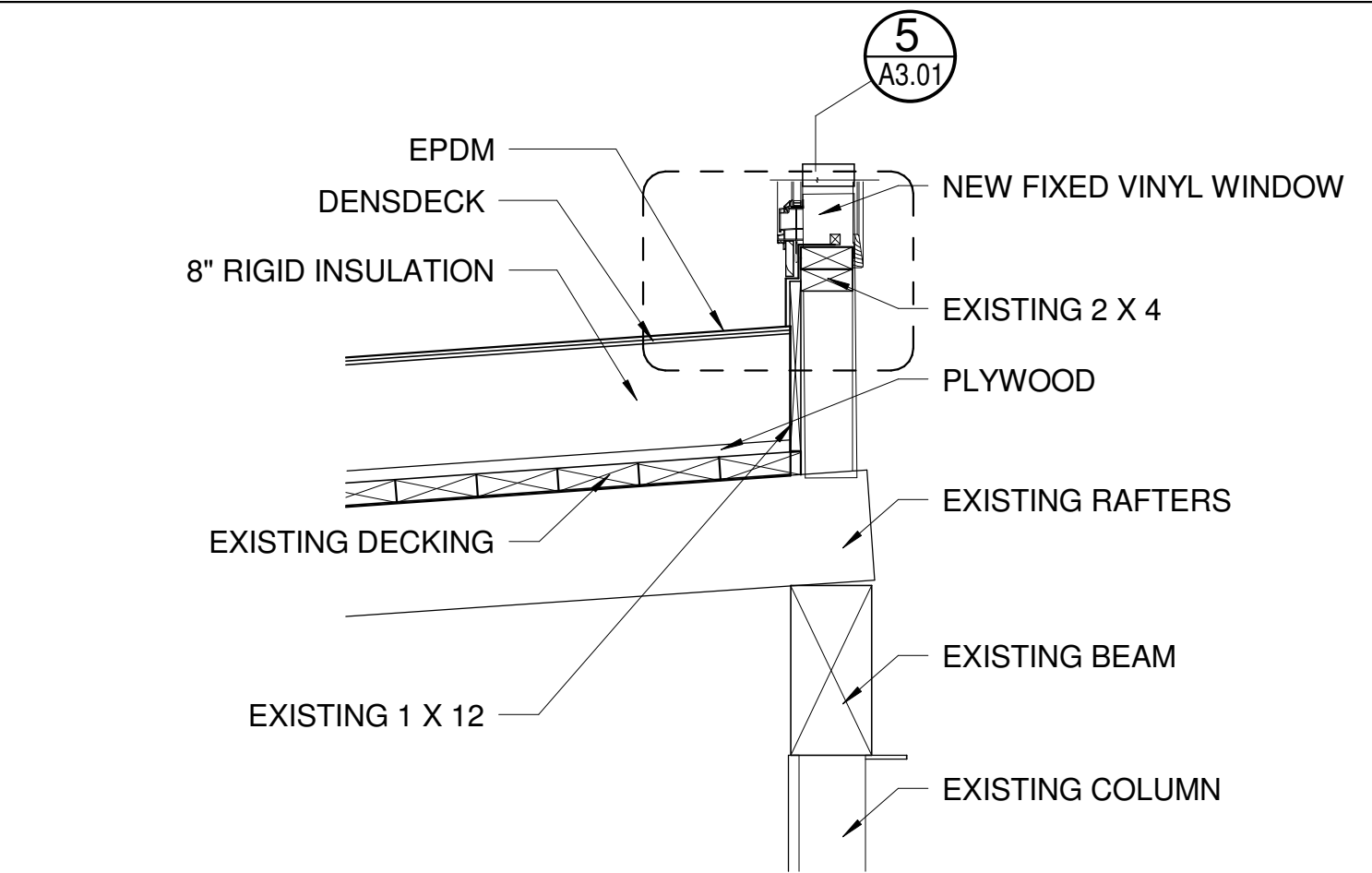
5 Sill Detail
 3" = 1'-0"



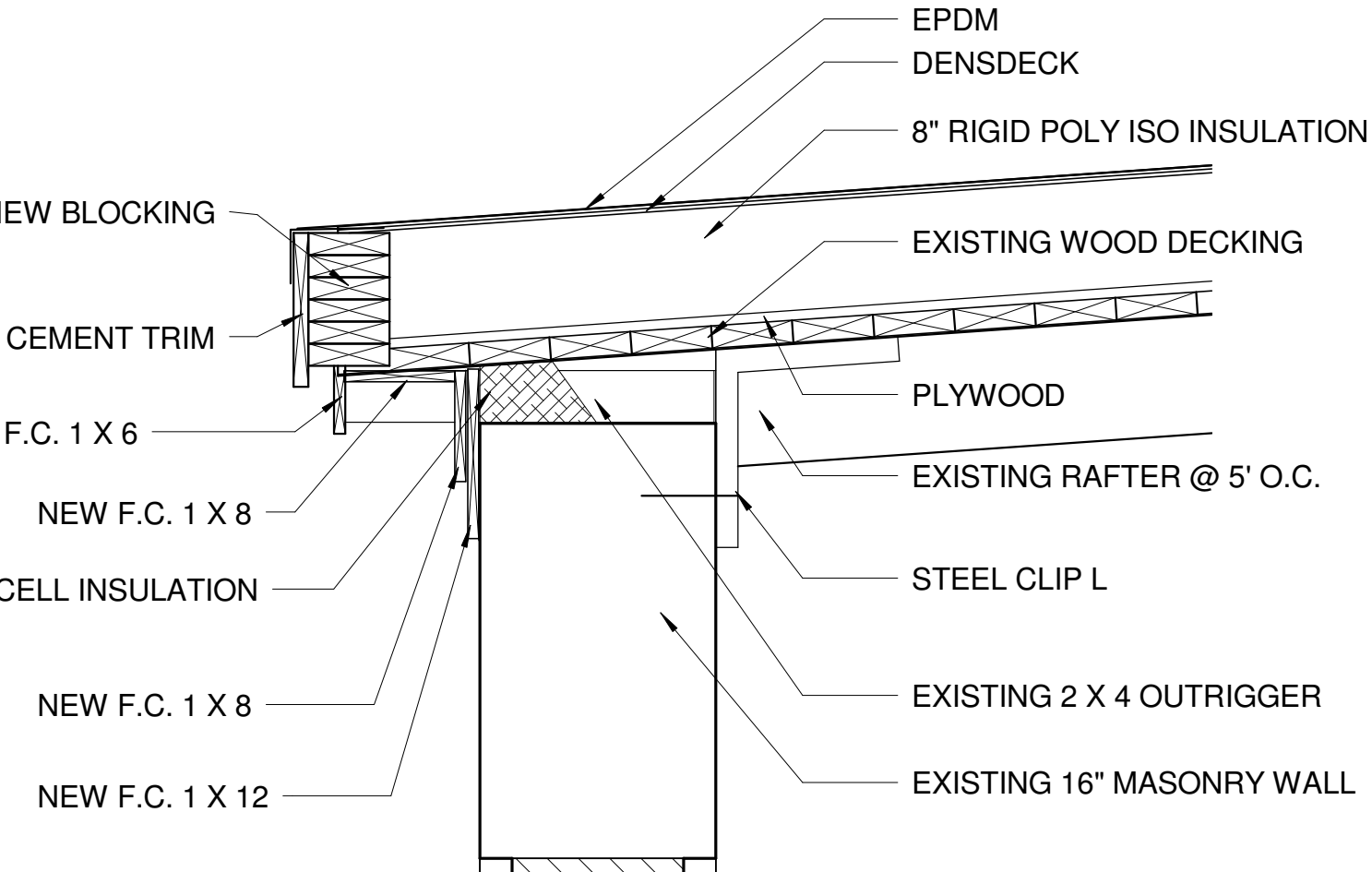
6 Header Detail
 3" = 1'-0"



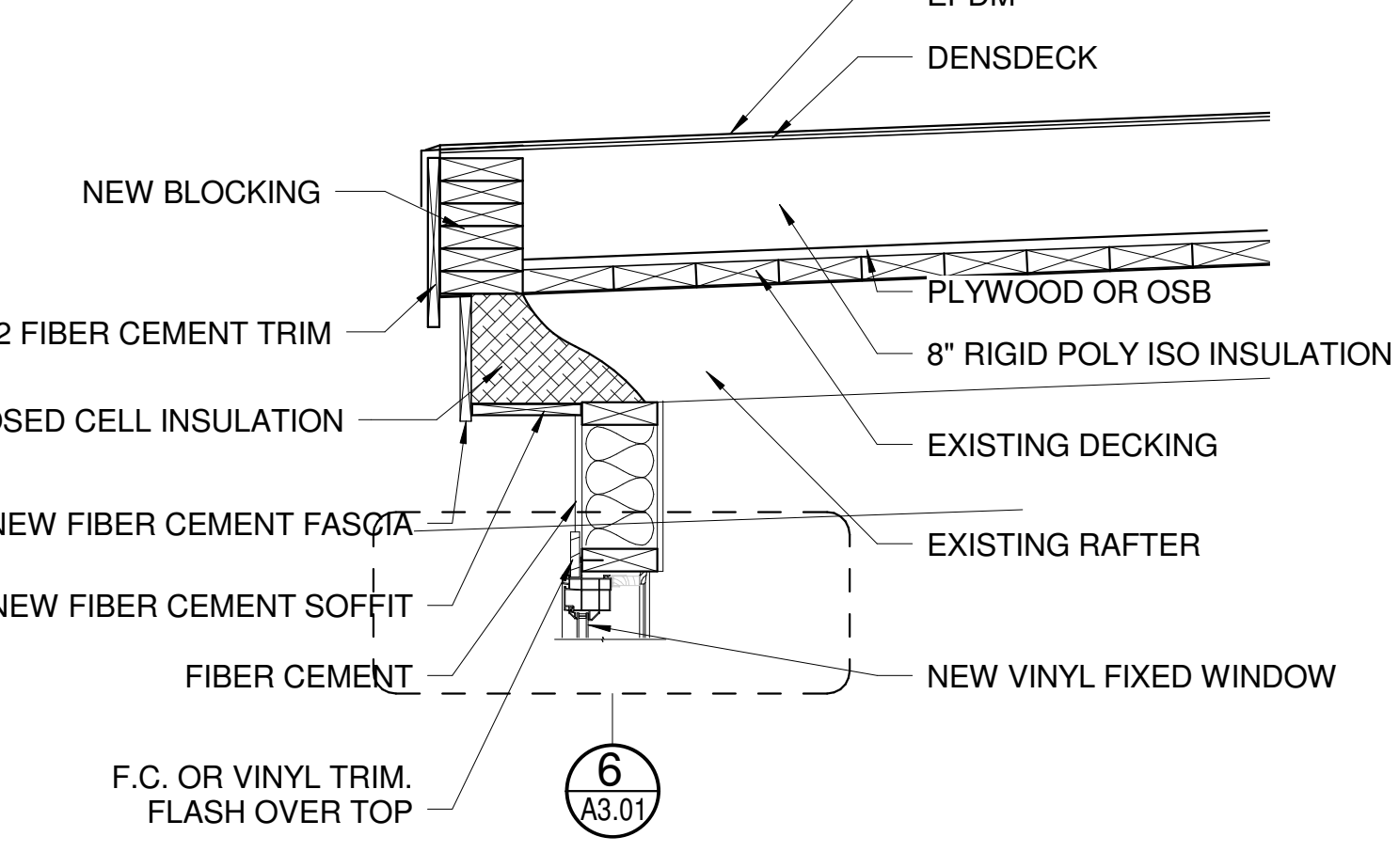
7 Jamb Detail
 1 1/2" = 1'-0"



1 Clerestory Window Sill
 1" = 1'-0"



3 Lower Roof Eave
 1" = 1'-0"



4 Upper Roof Eave
 1" = 1'-0"