

Prepared For:
**Thompson's Point
Development
Company Inc.**

Consultant:

ARCHETYPE
architects
48 Union Wharf Portland, Maine 04101
(207) 772-6022 Fax (207) 772-4056

Architect:

Brick North
Thompson's Point Portland, ME

Project:

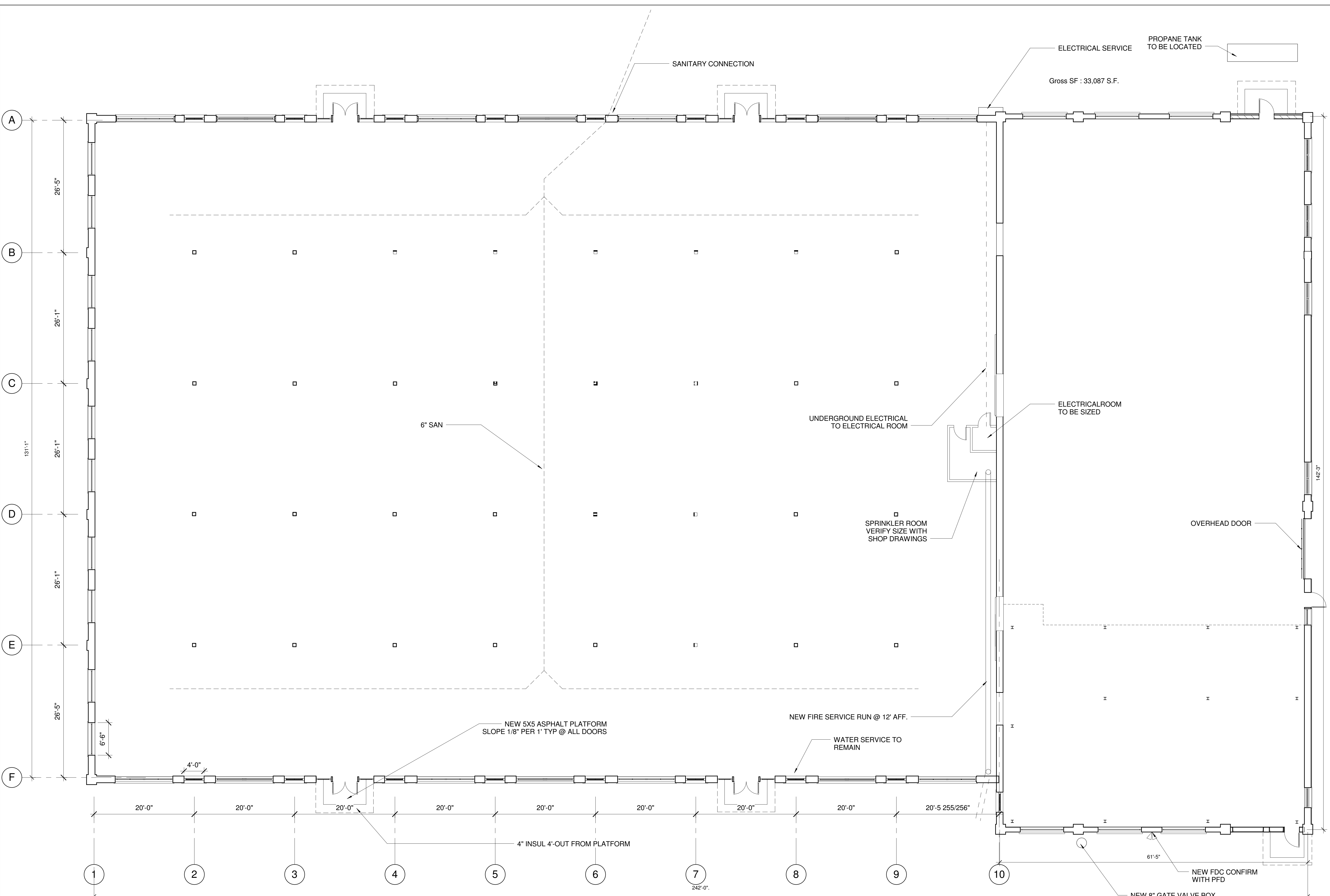
Revisions:

Date: 12-5-2013
Scale: 1/8" = 1'-0"

12-5-2013

First Floor Plan

A1.01



1 First Floor
1/8" = 1'-0"
0 2' 4' 8' 16'