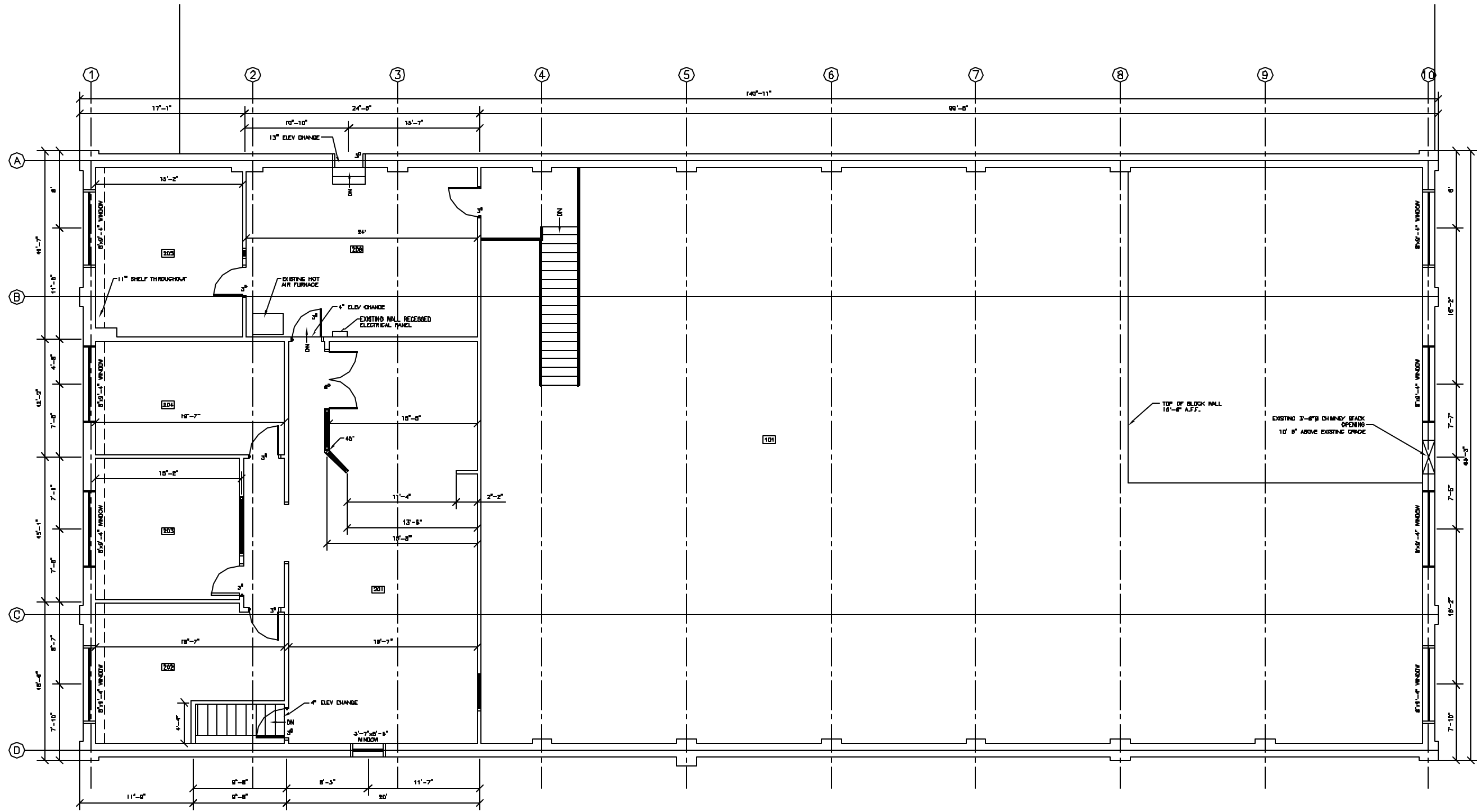


REVISIONS	
CODE:	04/23/02
FIELD CHECK REV	
DATE:	12/18/02
SCALE:	1/4"=1'-0"
DRAWN:	FMC/JLL
FILE:	02-0676
SHEET:	A-2



**2 SECOND FLOOR PLAN**  
 1/4" = 1'-0"  
 PLAN NORTH

- NOTES:**
- FLOOR ELEVATION IS 12'-0" ABOVE SLAB ON GRADE.
  - CEILING HEIGHT @ SECOND FLOOR - 7'-0" AFF
  - FLOOR IS GYPSED THROUGHOUT
  - CEILING CONSISTS OF ACQUILERA TILE WITH 2x4' FLOUREX LIGHTS THROUGHOUT
  - SPRINKLER THROUGHOUT
  - FORCED HOT AIR HEAT WITH WALL MOUNTED AIR CONDITIONING UNIT IN ROOM 201.
  - EXTERIOR WALL THICKNESS IS 1'-4"

**NOTES:**  
 1. ALL DIMENSIONS UNLESS OTHERWISE SPECIFIED ARE IN FEET AND INCHES.  
 2. ALL DIMENSIONS TO FACE UNLESS OTHERWISE SPECIFIED.  
 3. ALL DIMENSIONS TO CENTERLINE UNLESS OTHERWISE SPECIFIED.  
 4. ALL DIMENSIONS TO CENTERLINE UNLESS OTHERWISE SPECIFIED.  
 5. ALL DIMENSIONS TO CENTERLINE UNLESS OTHERWISE SPECIFIED.  
 6. ALL DIMENSIONS TO CENTERLINE UNLESS OTHERWISE SPECIFIED.  
 7. ALL DIMENSIONS TO CENTERLINE UNLESS OTHERWISE SPECIFIED.  
 8. ALL DIMENSIONS TO CENTERLINE UNLESS OTHERWISE SPECIFIED.  
 9. ALL DIMENSIONS TO CENTERLINE UNLESS OTHERWISE SPECIFIED.  
 10. ALL DIMENSIONS TO CENTERLINE UNLESS OTHERWISE SPECIFIED.