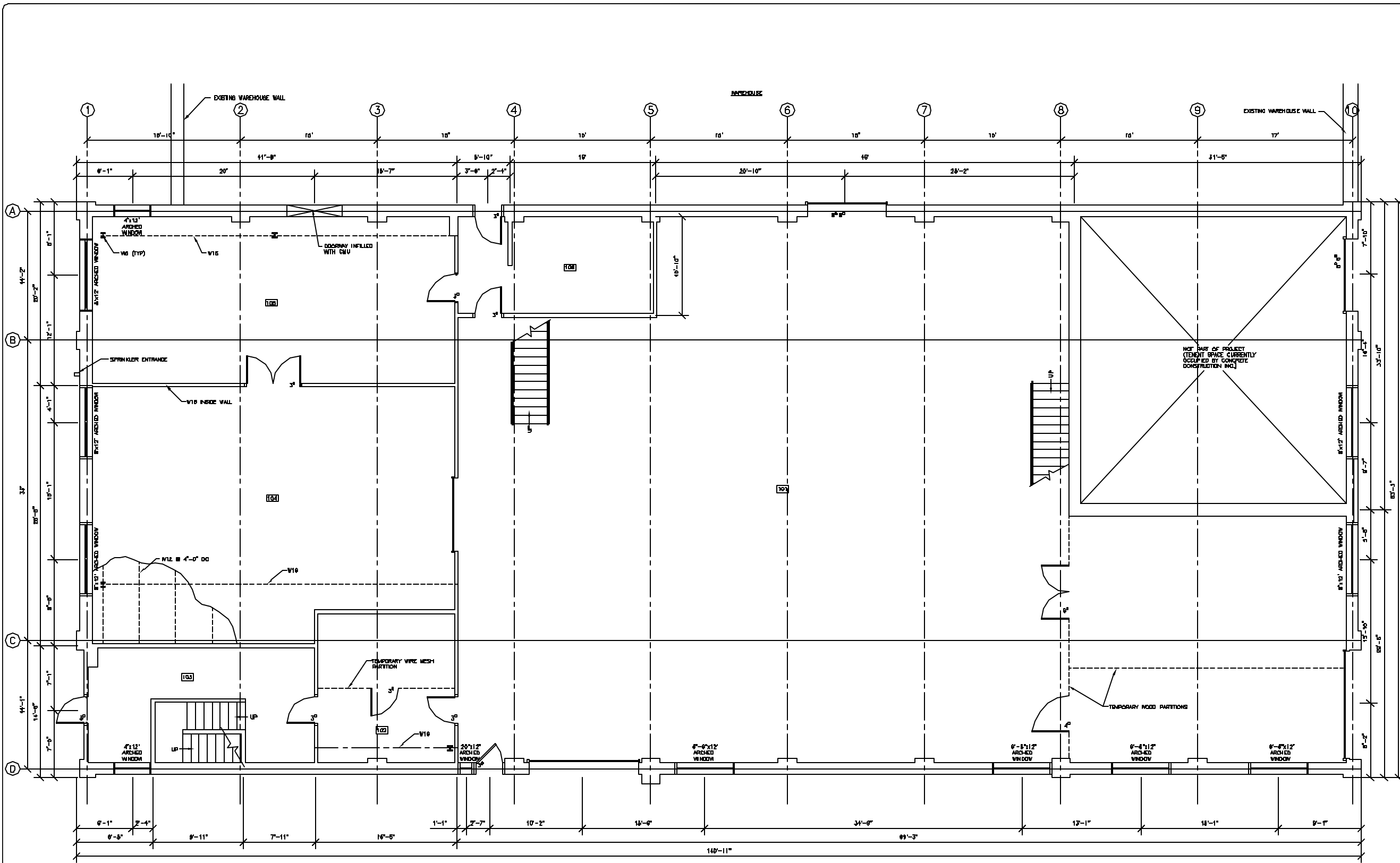




BUILDING #4
THOMPSON POINT
PORTLAND, MAINE

GROUND FLOOR PLAN



G GROUND FLOOR PLAN
1/4" = 1'-0"
PLAN NORTH

NOTES:
1. ALL INTERIOR WALLS ARE NON-LOADBEARING

NOTES:
1. ALL DIMENSIONS UNLESS OTHERWISE NOTED ARE IN FEET AND INCHES.
2. ALL DIMENSIONS TO FACE UNLESS OTHERWISE NOTED.
3. ALL DIMENSIONS TO CENTERLINE UNLESS OTHERWISE NOTED.
4. ALL DIMENSIONS TO CENTERLINE UNLESS OTHERWISE NOTED.
5. ALL DIMENSIONS TO CENTERLINE UNLESS OTHERWISE NOTED.
6. ALL DIMENSIONS TO CENTERLINE UNLESS OTHERWISE NOTED.
7. ALL DIMENSIONS TO CENTERLINE UNLESS OTHERWISE NOTED.
8. ALL DIMENSIONS TO CENTERLINE UNLESS OTHERWISE NOTED.
9. ALL DIMENSIONS TO CENTERLINE UNLESS OTHERWISE NOTED.
10. ALL DIMENSIONS TO CENTERLINE UNLESS OTHERWISE NOTED.

REVISIONS
CODE: 04/23/02
FIELD CHECK REV
DATE: 12/18/02
SCALE: 1/4"=1'-0"
DRAWN: FMC/JLL
FILE: 02-0676
SHEET: A-1