

MOUNTING STRAP DETAIL
NOT TO SCALE

STRUCTURAL NOTES:

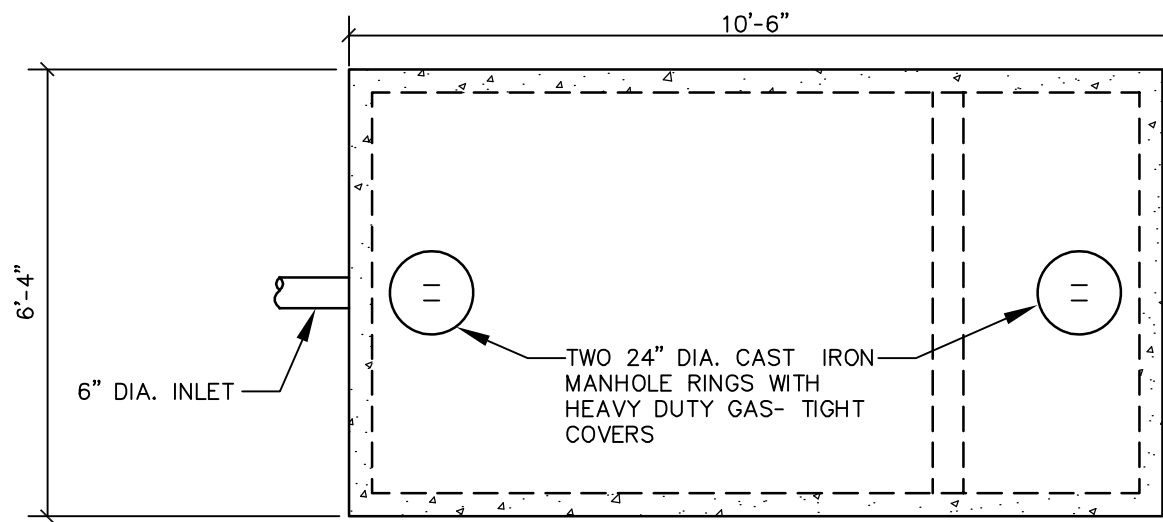
- CONCRETE:
 - 28 DAY COMPRESSIVE STRENGTH $F'_c = 4,000$ PSI.
 - CEMENT TO BE TYPE III PER ASTM C-150
 - 4%-6% ENTRAINED AIR
- STRUCTURAL REINFORCEMENT:
 - REINFORCED FOR H-20 LOADING
- BAR CLEARANCE/PROTECTION:
 - 1 1/2" CLR. (UNLESS OTHERWISE NOTED)

INSTALLATION REQUIREMENTS:

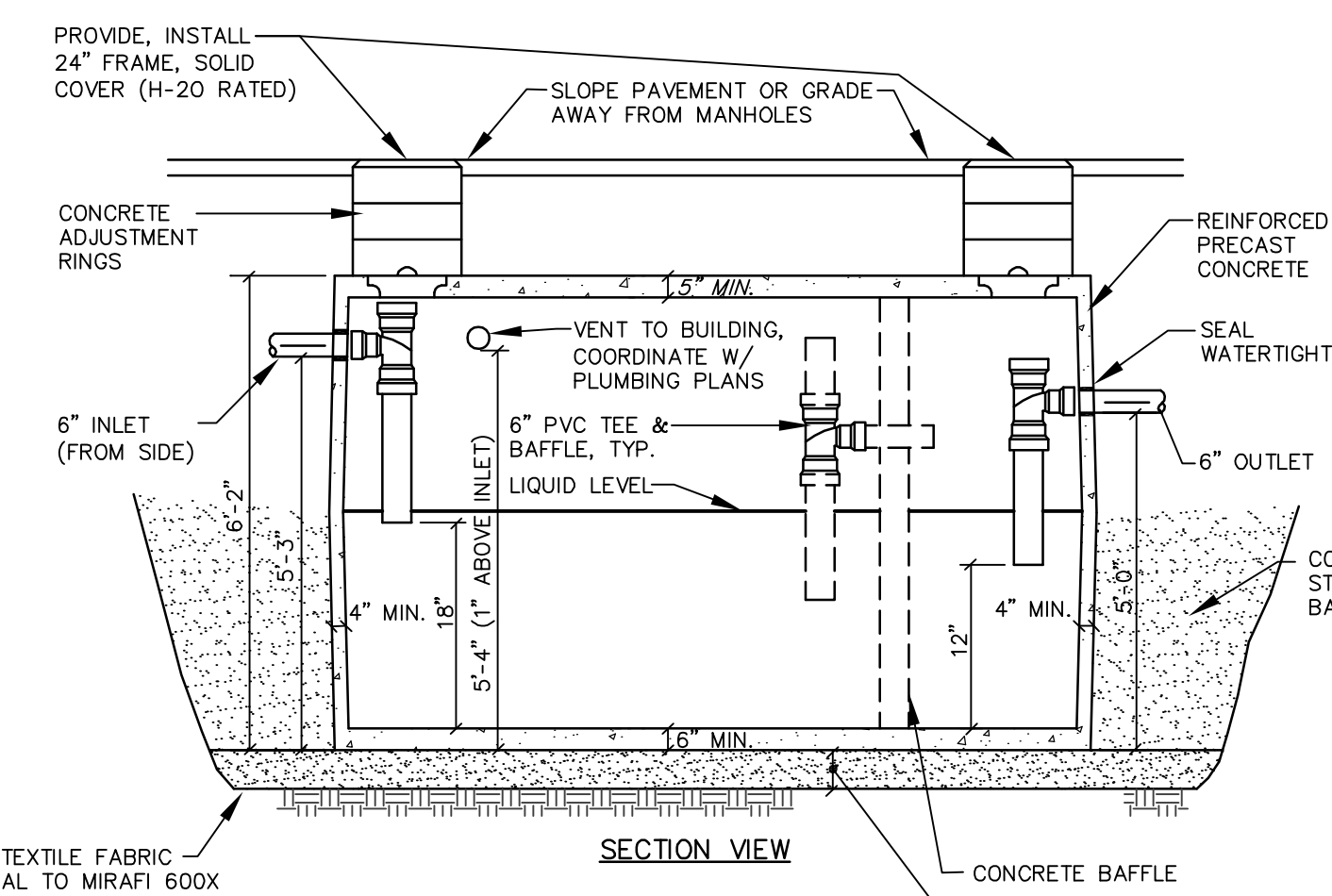
- TO BE INSTALLED ON MIN. 8" THICK BED OF CRUSHED 3/4" STONE.
- USE 1" CON-SEAL 102 AT JOINTS.
- JOINT GAPS LESS THAN 0.5", GROUT TO FILL VOIDS.

GENERAL NOTES:

- ALL BAFFLES AND WEIRS TO BE PRECAST CONCRETE.
- CONTRACTOR TO: SUPPLY AND INSTALL ALL PIPING & SAMPLING TEES GROUT IN ALL PIPES FILL WITH CLEAN WATER PRIOR TO "START-UP" OF SYSTEM VERIFY ALL BLOCKOUT SIZES AND LOCATIONS. PUMP BY OTHERS.
- GREASE INTERCEPTOR BY AMERICAN CONCRETE OR APPROVED EQUAL.



PLAN VIEW



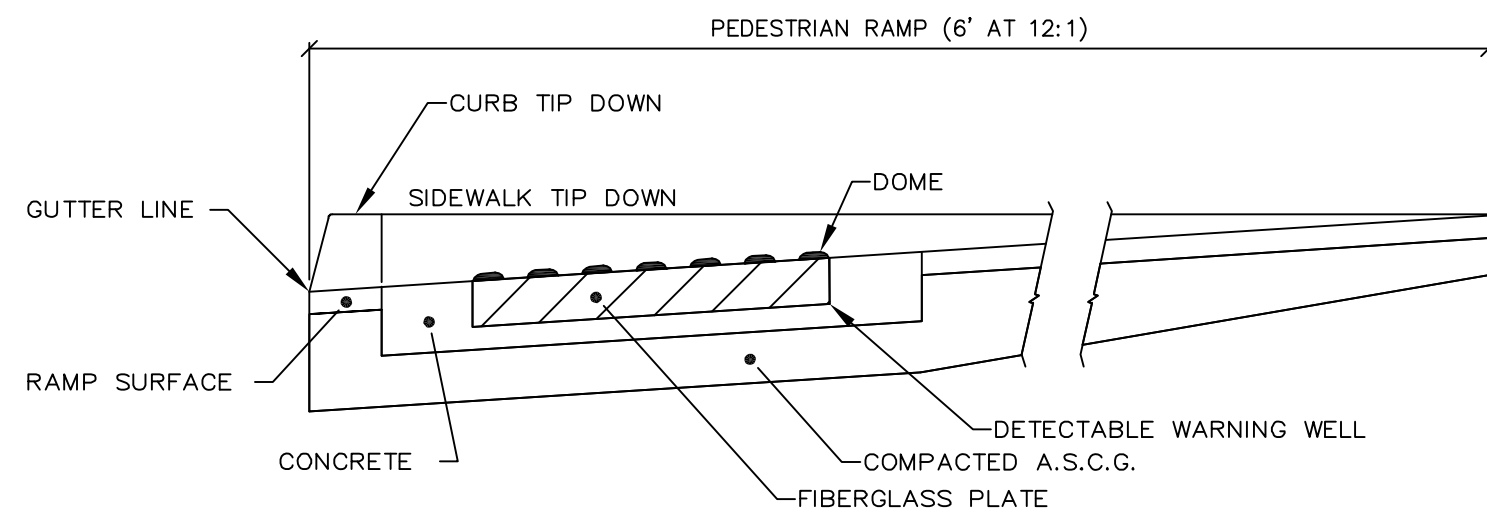
SECTION VIEW

CAPACITY	LENGTH	WIDTH	HEIGHT	INLET	OUTLET
2,000 GAL.	10'-6"	6'-4"	6'-2"	5'-3"	5'-0"

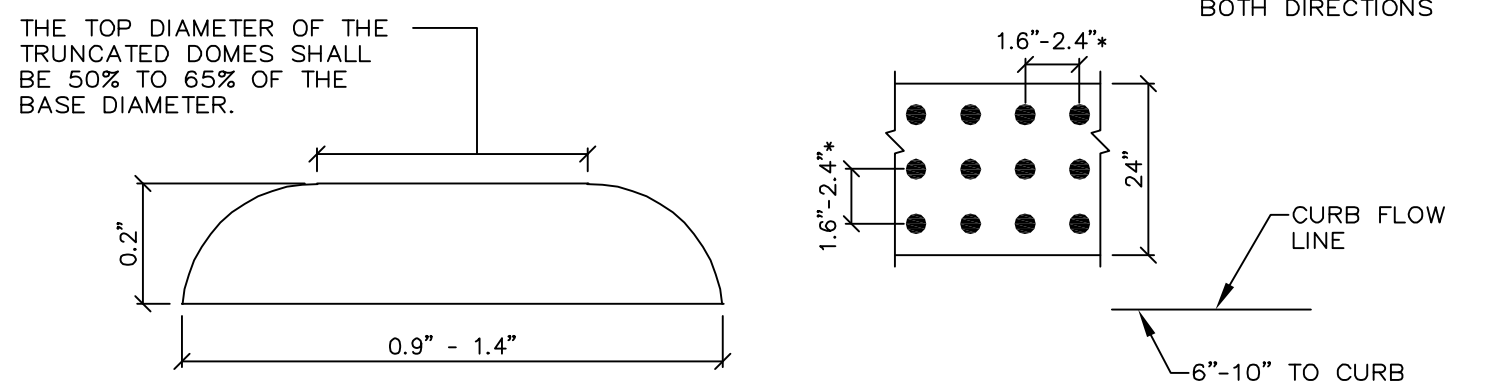
NOTES:

- COAT INTERIOR OF TANK WITH EPOXY SEALER
- ALL CONCRETE HAS A MINIMUM COMPRESSIVE STRENGTH OF 4,000 PSI @ 28 DAYS.
- SHALL BE DESIGNED FOR H-20 LOADINGS.
- THE TONGUE AND GROOVE CENTER SEAM IS SEALED WITH A BUTYL SEALANT.
- THE PVC TEE BAFFLES FOR THIS TANK CAN BE MOVED TO ANY OF THE (3) INLETS OR OUTLETS.
- POLYLOK PIPE SEALS STANDARD AT ALL PIPE PENETRATIONS.
- DETAIL SHOWS GENERAL SCHEMATIC REQUIREMENTS. CONTRACTOR SHALL SUBMIT PROPOSED GREASE INTERCEPTOR INSTALLATION PLANS AND SPECIFICATIONS TO LOCAL AUTHORITIES FOR THEIR APPROVAL BEFORE ACQUISITION OF INTERCEPTOR. PROVIDE INTERCEPTOR WITH ADEQUATE STRUCTURAL STRENGTH TO ACCOMMODATE VEHICULAR TRAFFIC AT INSTALLATION LOCATION.
- COAT EXTERIOR OF CONCRETE WITH BITUMASTIC SEALANT.
- COORDINATE LOCATION WITH ARCHITECTURAL DRAWINGS.
- SEE UTILITY PLANS FOR INLET AND OUTLET PIPE SIZES AND INVERTS.
- GREASE TRAP TO BE 2,000 GAL. DOUBLE COMPARTMENT AS MANUFACTURED BY AMERICAN CONCRETE INDUSTRIES OR APPROVED EQUAL.

TYP. 2,000 GAL. OIL/WATER/GRIT INTERCEPTOR
NOT TO SCALE

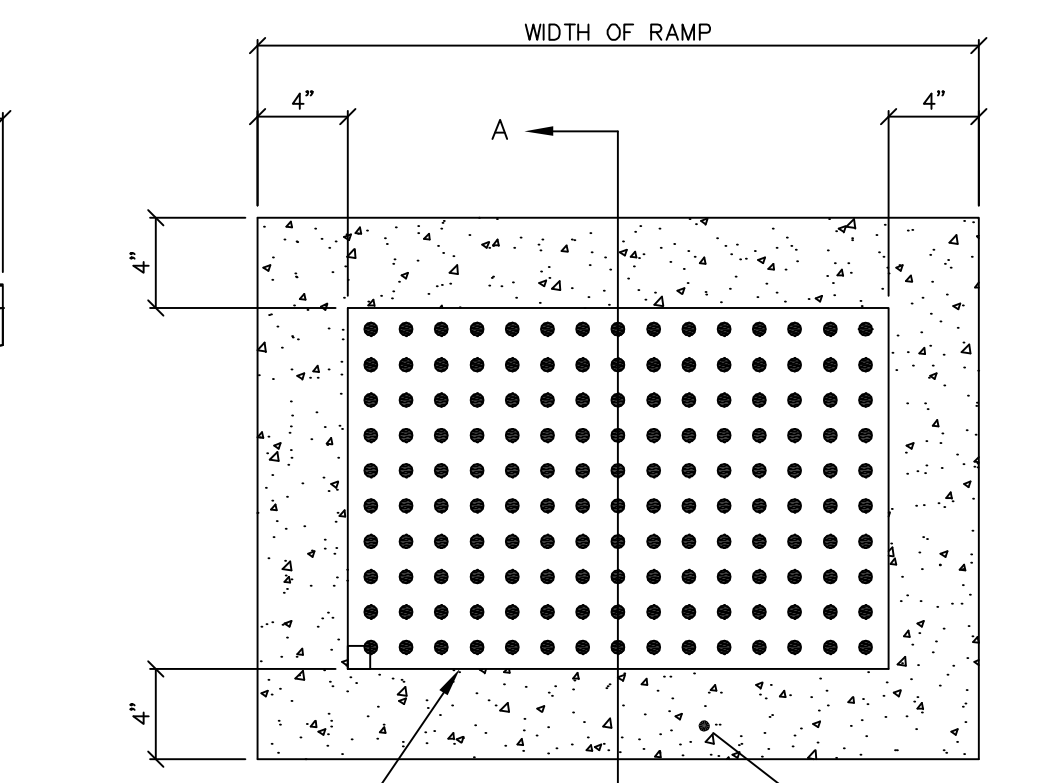


SIDE SECTION VIEW OF DETECTABLE WARNING, WELL, CURB AND GUTTER

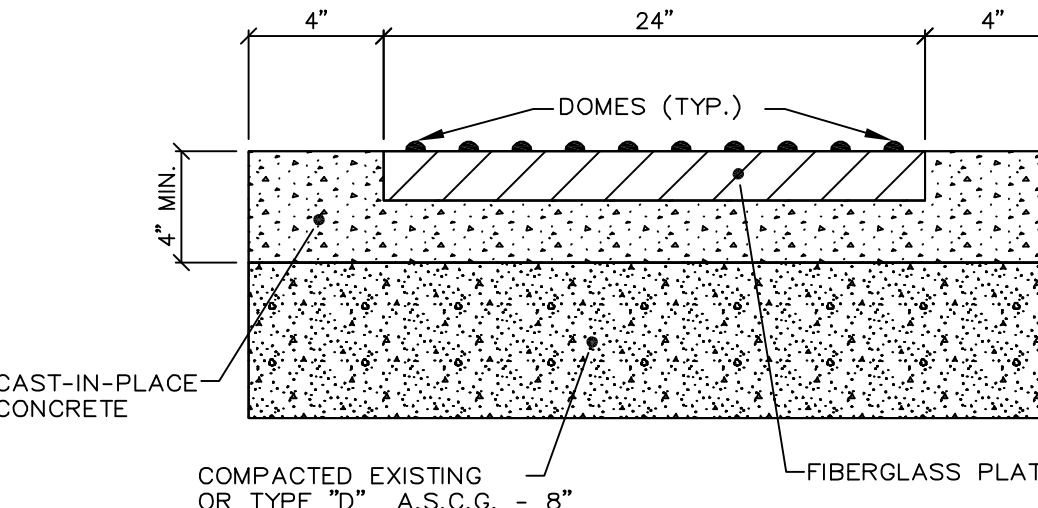


ELEVATION VIEW
PLAN VIEW
DOMES AND DETECTABLE WARNING DETAILS

NOTE: ALL DETECTABLE WARNING AREAS SHALL START 6" - 10" FROM THE FLOW LINE OF THE CURB, BE 24" IN DEPTH, AND COVER THE COMPLETE WIDTH OF THE RAMP AREA ONLY.



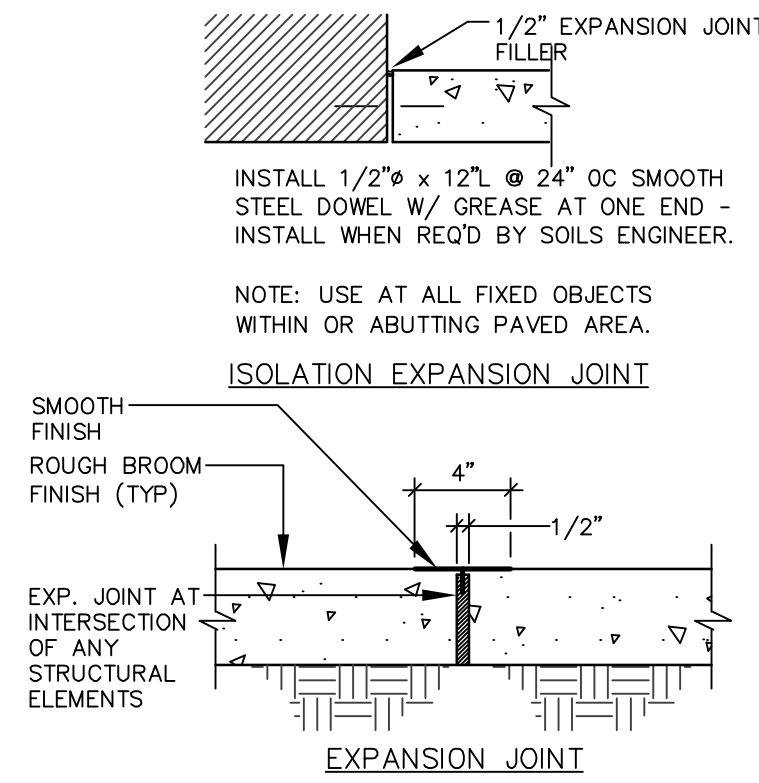
PLAN VIEW OF DETECTABLE WARNING AND WELL



SECTION A-A

DETECTABLE WARNING AREAS

NOT TO SCALE

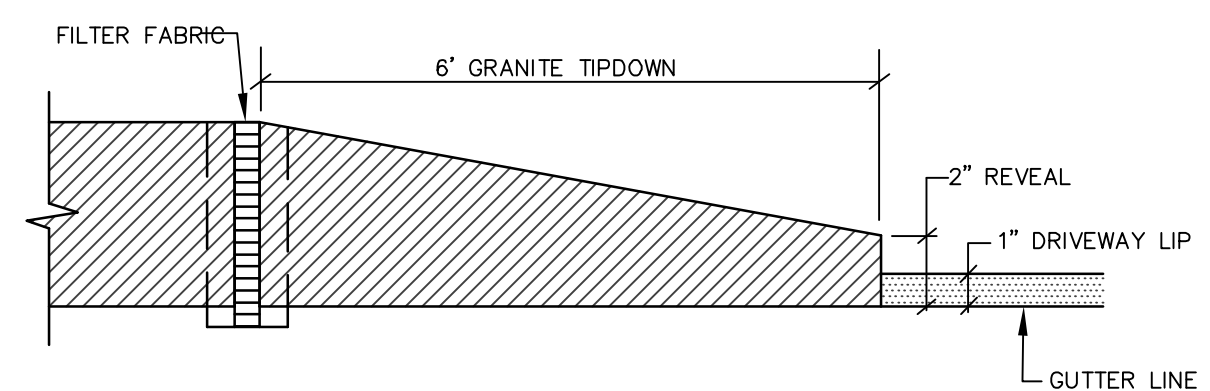


NOTES:

- POUR CONCRETE IN CHECKER BOARD FASHION AS PER JOINT LAYOUT (SEE PLAN).
- ALL LONGITUDINAL JOINTS MAY BE CONSTRUCTION JOINTS AT CONTRACTORS OPTION. TRANSVERSE CONSTRUCTION JOINTS SHALL BE INSTALLED WHENEVER THE PLACING OF CONCRETE IS SUSPENDED A SUFFICIENT LENGTH OF TIME THAT THE CONCRETE MAY BEGIN TO HARDEN.
- SEE SITE PLANS FOR COLORED CONCRETE AND DECORATIVE STAMPED PATTERN LOCATIONS.

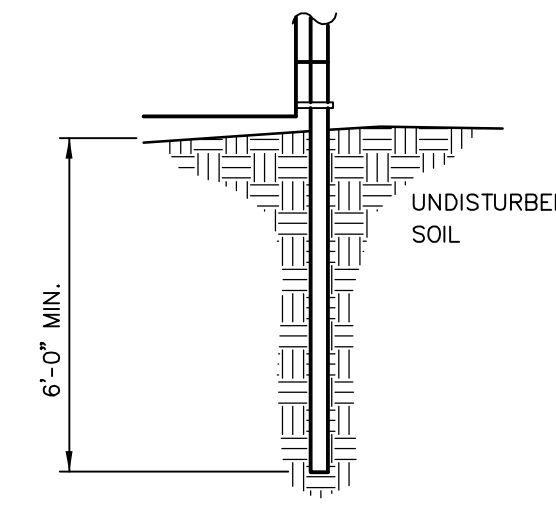
CONTROL JOINT DETAILS

NOT TO SCALE



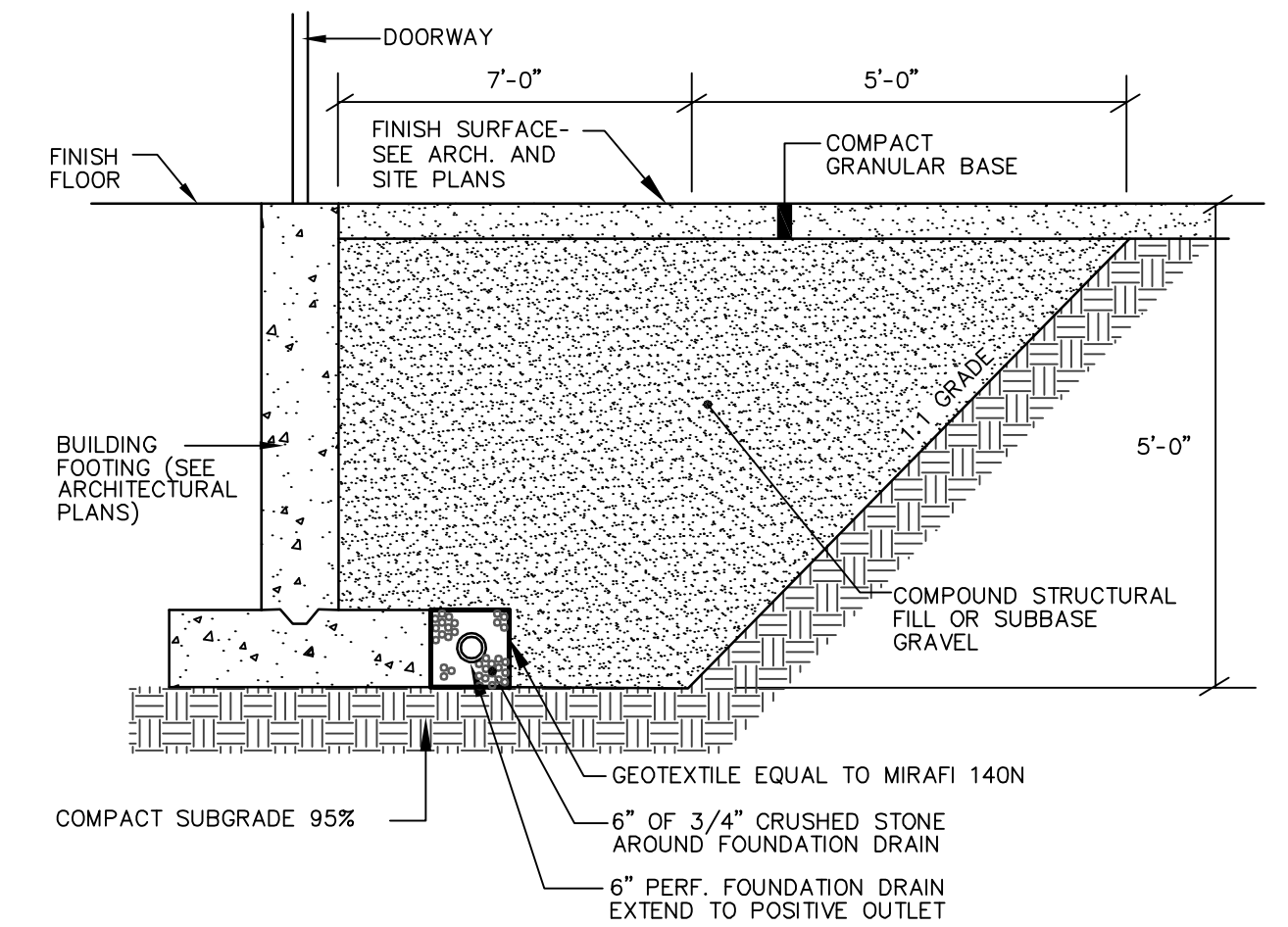
TYPICAL TIPDOWN CURB INSTALLATION

NOT TO SCALE



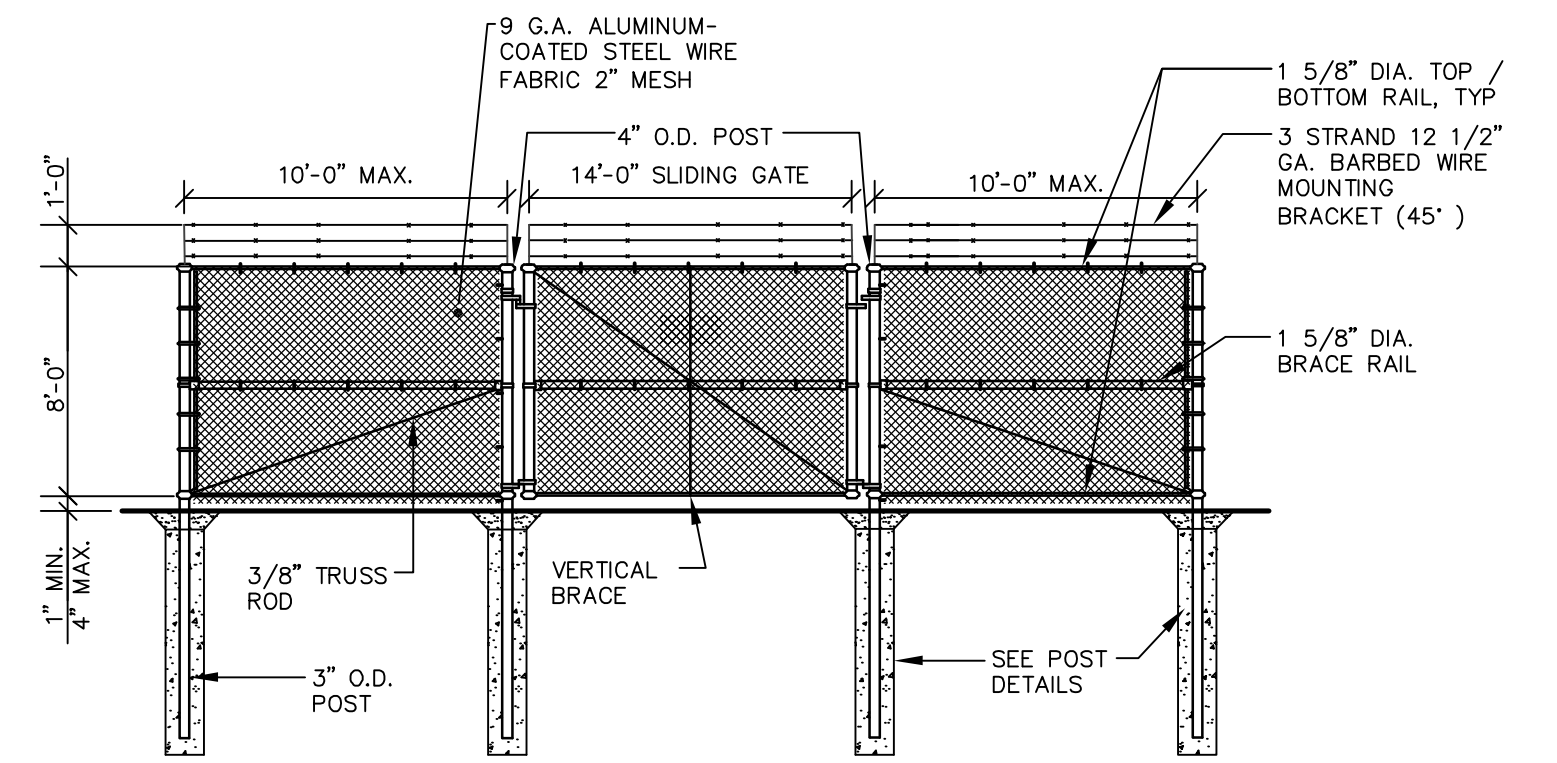
INTERMEDIARY LINE POST DETAIL

NOT TO SCALE



5' GRANULAR BASE @ DOOR THRESHOLD

NOT TO SCALE

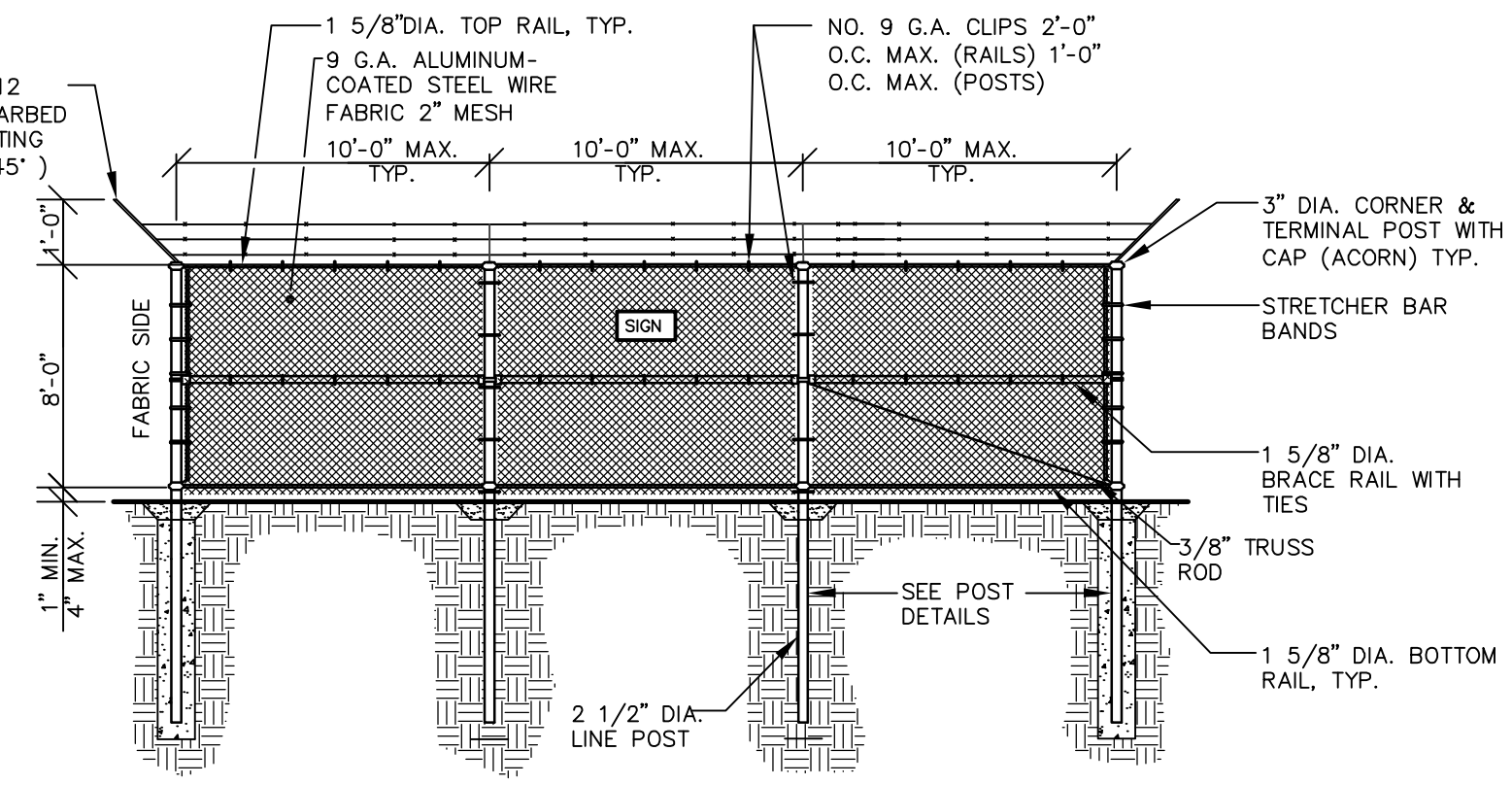


14' SLIDING GATE DETAIL

NOT TO SCALE

NOTES:

- SUBMIT SHOP DRAWINGS FOR OWNER / ENGINEER APPROVAL.
- PROVIDE AND INSTALL INTELLIKY GATE LOCK SYSTEM AT ALL GATES (SLIDING & MAN GATES). ROLLING GATES SHALL HAVE 14" CLEAR PASSAGE AND SHALL BE EQUAL TO TYPICAL CORPORATION HEAVY DUTY FORTRESS CALTILVER SLIDING GATES. PROVIDE SHOP DRAWINGS FOR ENGINEER AND JETPORT APPROVAL.

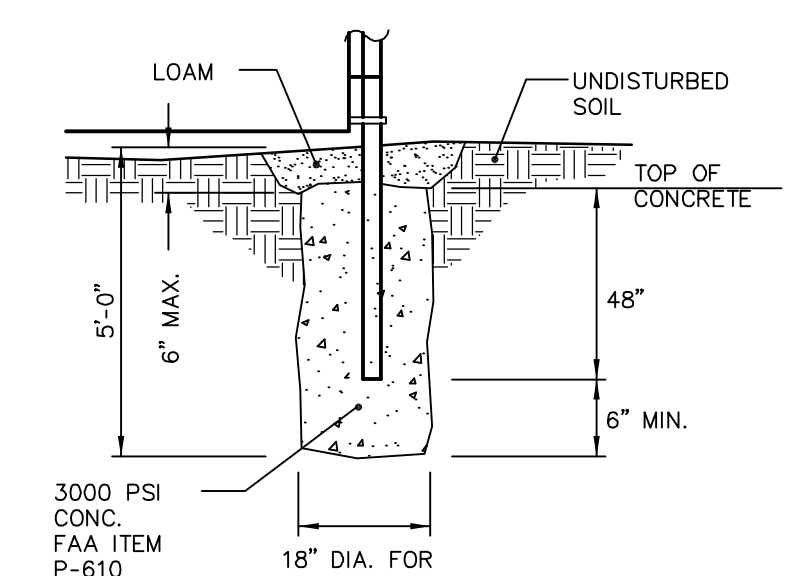


NOTES:

- SIGNS TO BE PLACED ON FENCE EVERY 200 FEET AND ONE ON EACH GATE. SIGNS WILL BE 10" X 14" AND SHALL READ AS FOLLOWS: NOTICE (WHITE LETTERS, BLUE BACKGROUND) NO TRESPASSING ON THIS PROPERTY UNDER PENALTY OF LAW (BLUE LETTERS, WHITE BACKGROUND)
- SUBMIT SHOP DRAWINGS FOR OWNER'S/ENGINEER'S APPROVAL.
- MAN GATES TO BE 3'-0" AT LOCATIONS SHOWN ON PLANS.

10' CHAINLINK FENCE DETAIL

NOT TO SCALE



CORNER & TERMINAL POST DETAIL

NOT TO SCALE

OWENS A. MCDULLOUGH PE 7122

DESIGNED	CHECKED
OAM	OAM
B OAM 8/31/17 REVISED PER CITY REVIEW A OAM 6/29/17 ISSUED FOR SITE PLAN REVIEW REV. BY: DATE: STATUS: THIS PLAN SHALL NOT BE MODIFIED WITHOUT WRITTEN PERMISSION FROM SEBAGO TECHNICS, INC. ANY ALTERATIONS AUTHORIZED OR OTHERWISE, SHALL BE AT THE USER'S SOLE RISK AND WITHOUT LIABILITY TO SEBAGO TECHNICS, INC.	

SEBAGO TECHNICS
WWW.SEBAGO-TECHNICS.COM
75 John Roberts Rd., Suite 1A
South Portland, ME 04106
Tel: 207-200-9100 Fax: 207-783-5656

DETAILS OF: NORTHEAST AIR-NORTH HANGAR PROJECT
PORTLAND INTERNATIONAL JETPORT
PORTLAND, MAINE
FOR: **NORTHEAST AIR**
1011 WESTBROOK STREET
PORTLAND, MAINE 04102

PROJECT NO.	SCALE
16123	NTS

SHEET 6 OF 6

161230.dwg 7/46/03