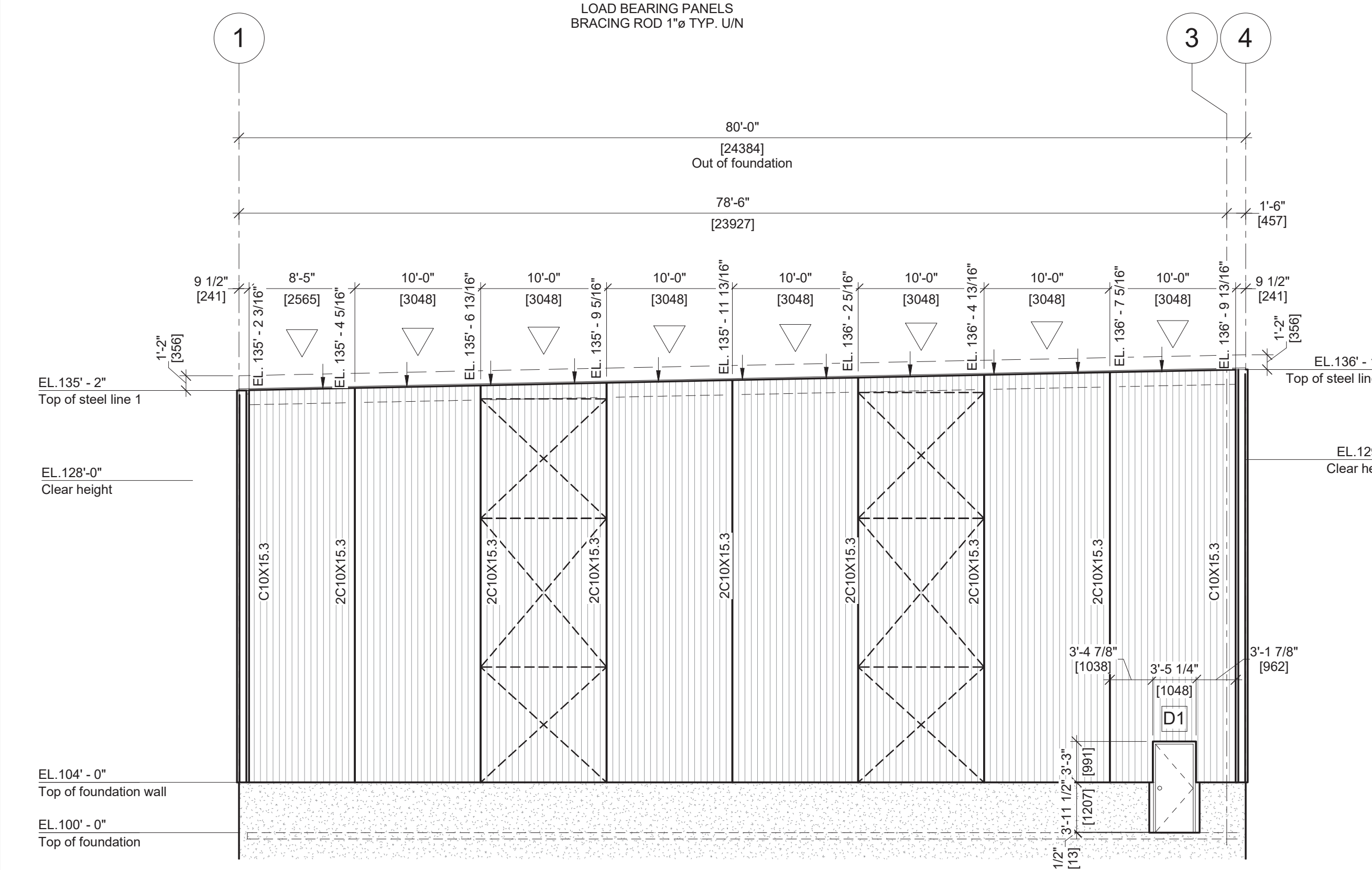
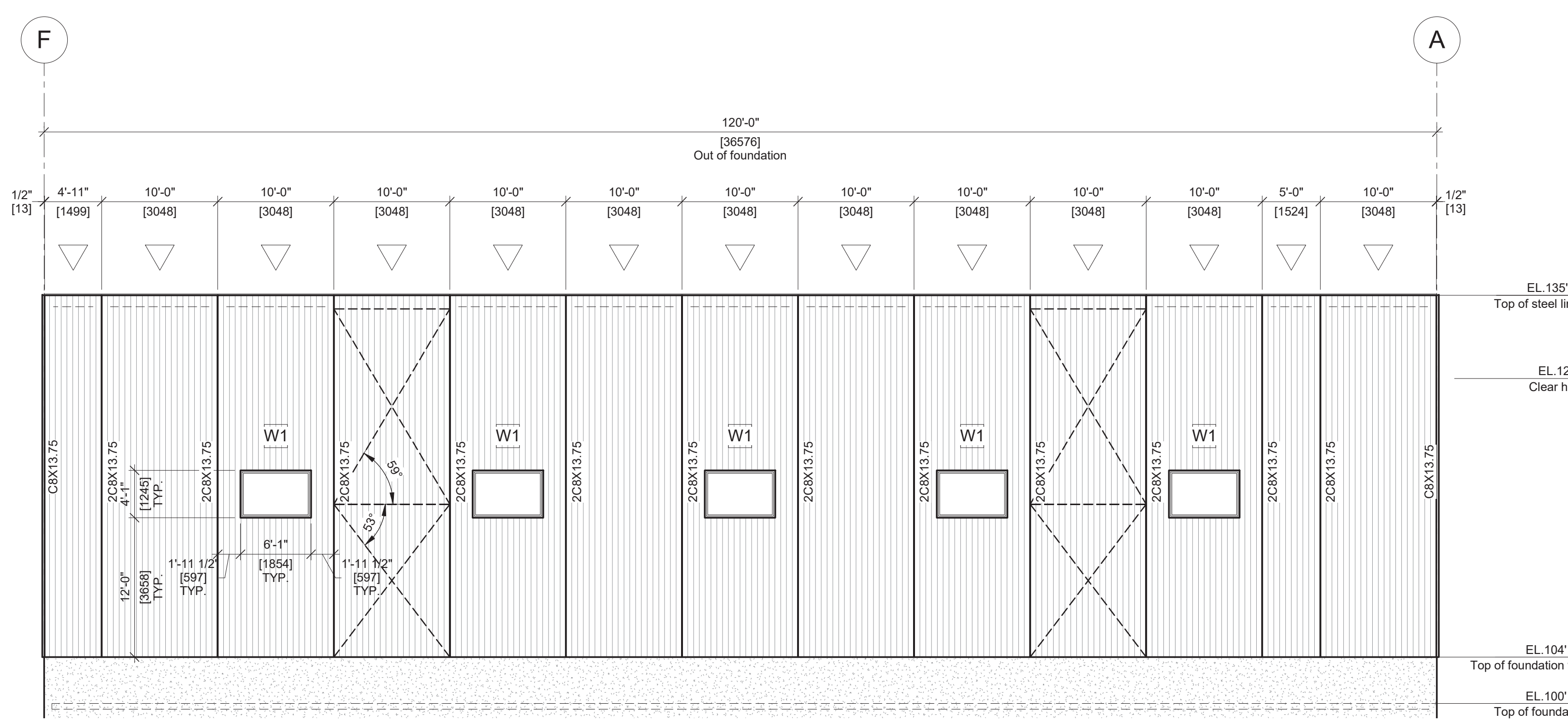


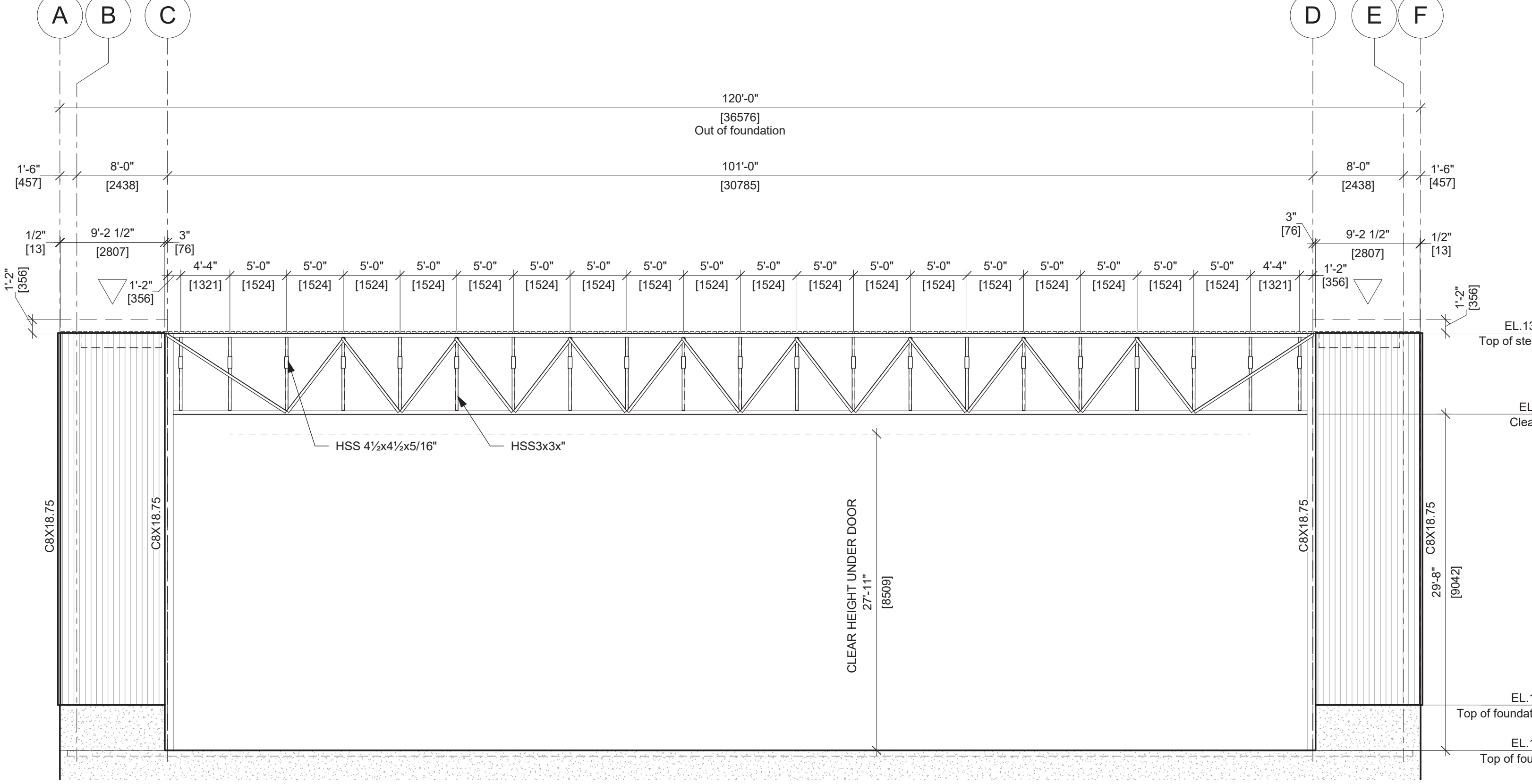
**ELEVATION LINE F**  
1/8" = 1'-0"  
LOAD BEARING PANELS  
BRACING ROOF 1' x TYP. LIN



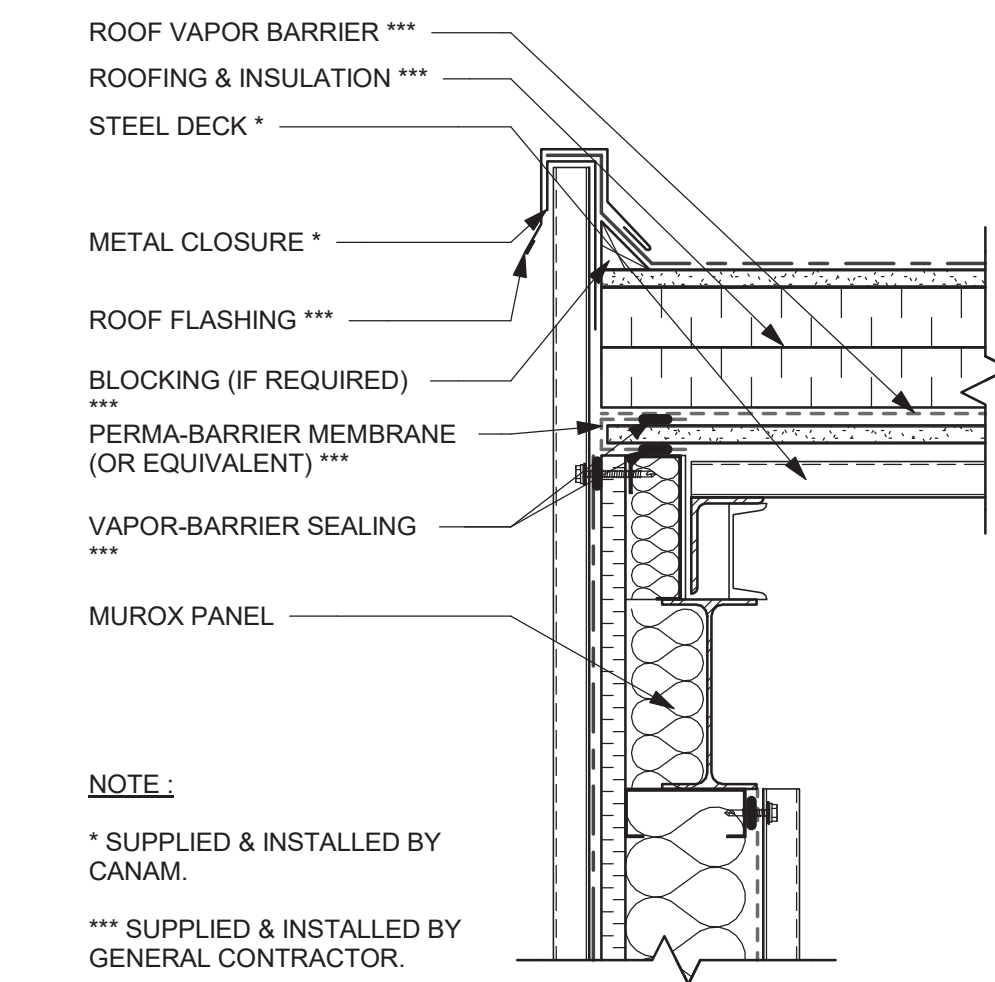
**ELEVATION LINE A**  
1/8" = 1'-0"  
LOAD BEARING PANELS  
BRACING ROOF 1' x TYP. LIN



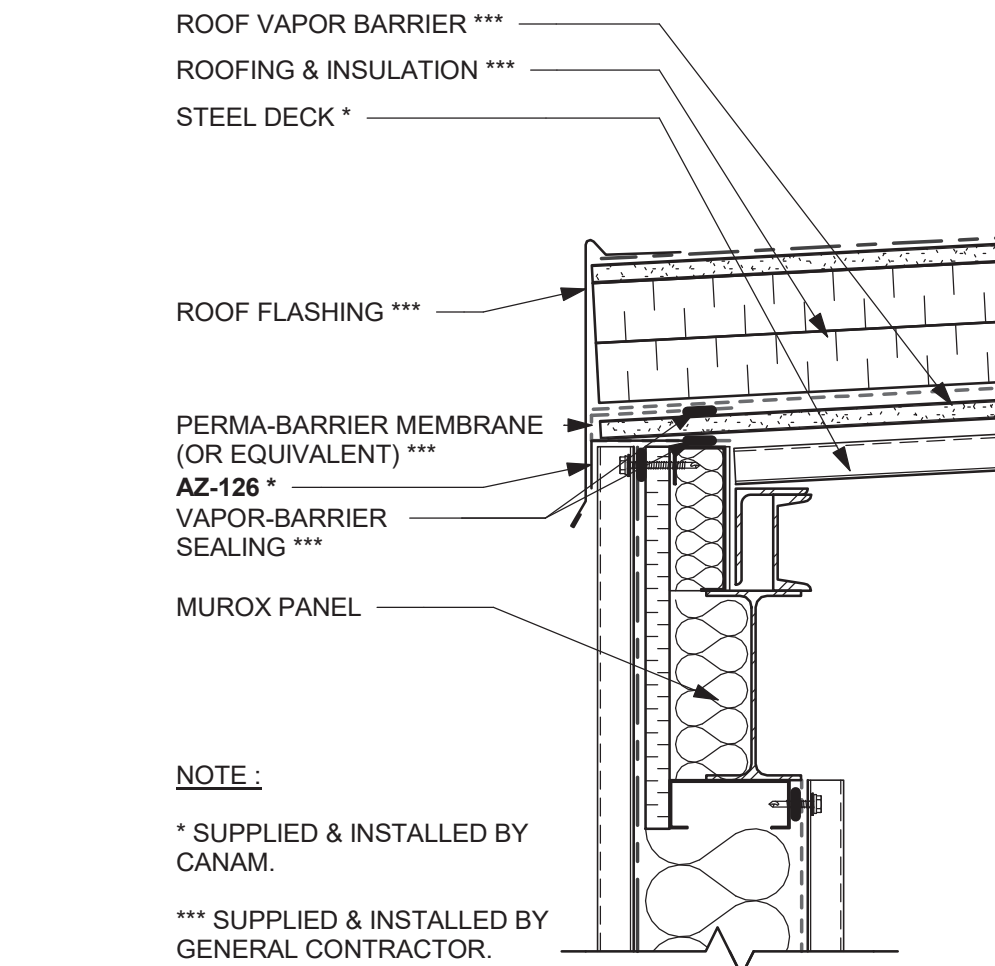
**ELEVATION LINE 1**  
1/8" = 1'-0"  
NON LOAD BEARING PANELS  
BRACING ROD 1' x TYP. LIN



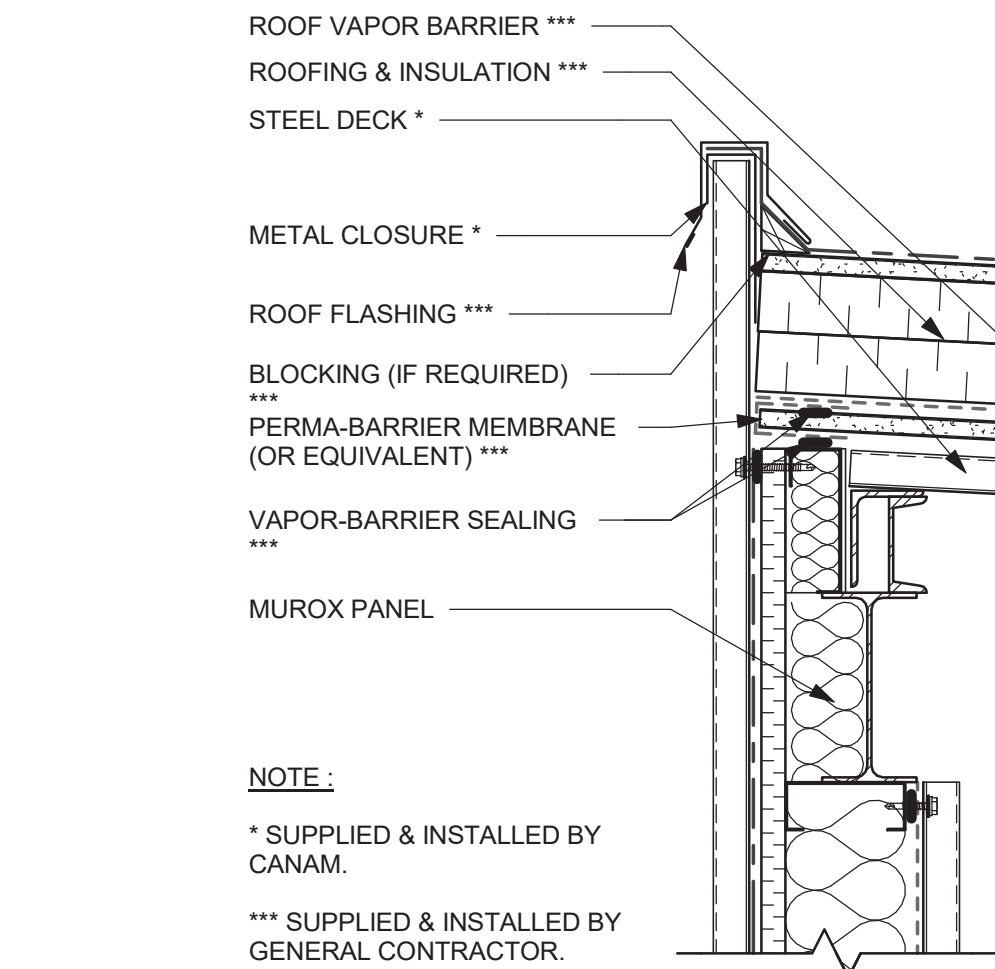
**ELEVATION LINE 4**  
1/8" = 1'-0"  
NON LOAD BEARING PANELS  
BRACING ROD 1' x TYP. LIN



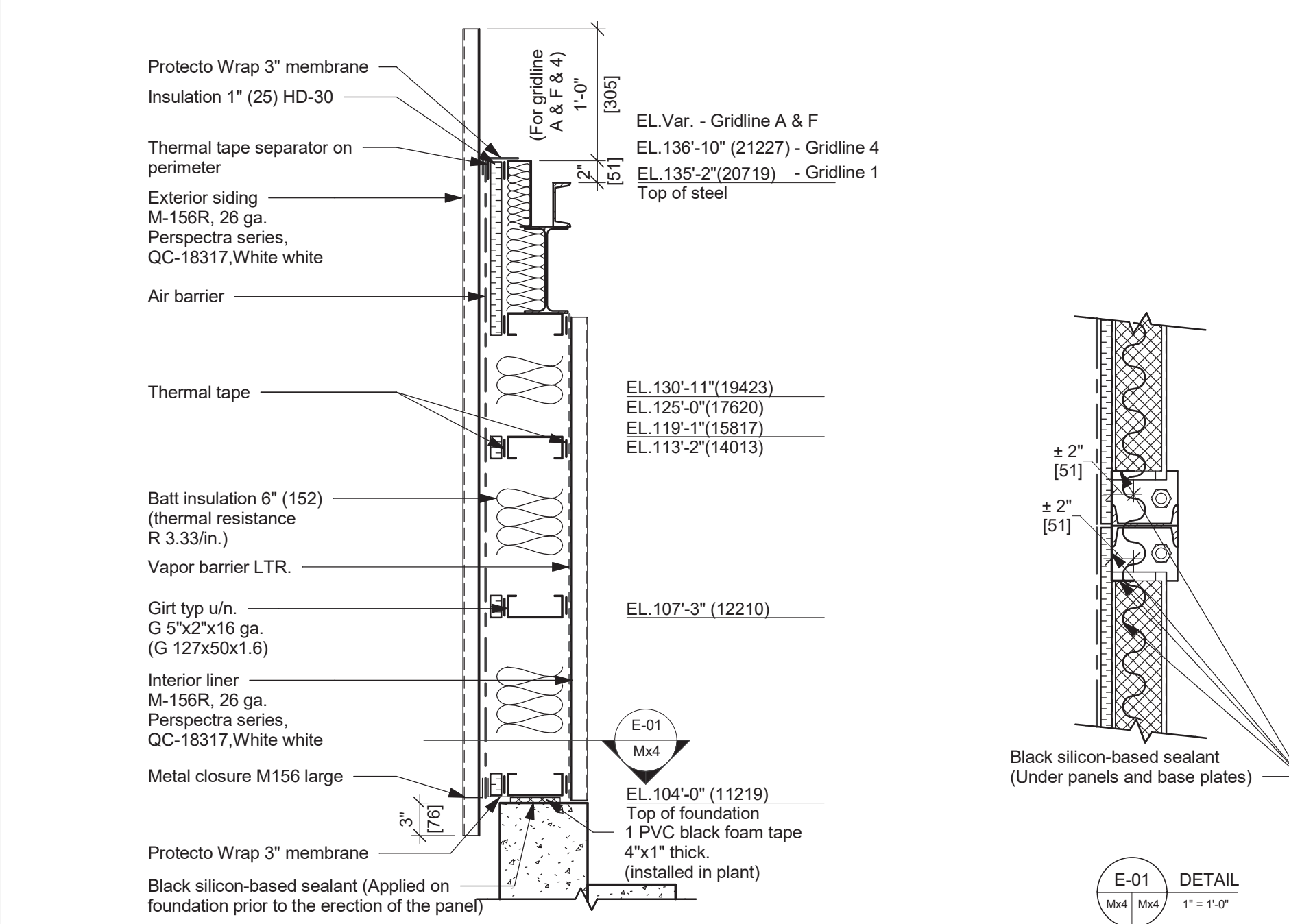
**Proposition panel & roof gridline A & F**  
1/12" = 1'-0"



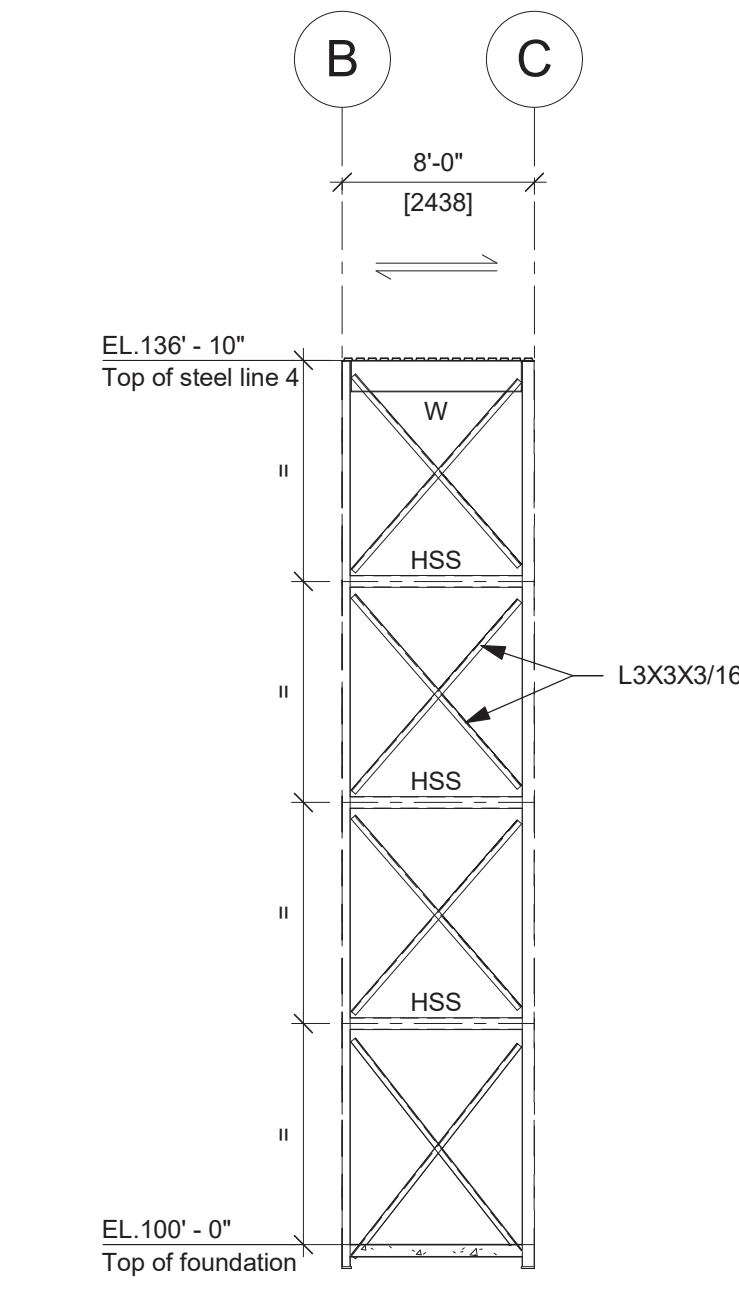
**Proposition panel & roof gridline 1**  
1/12" = 1'-0"



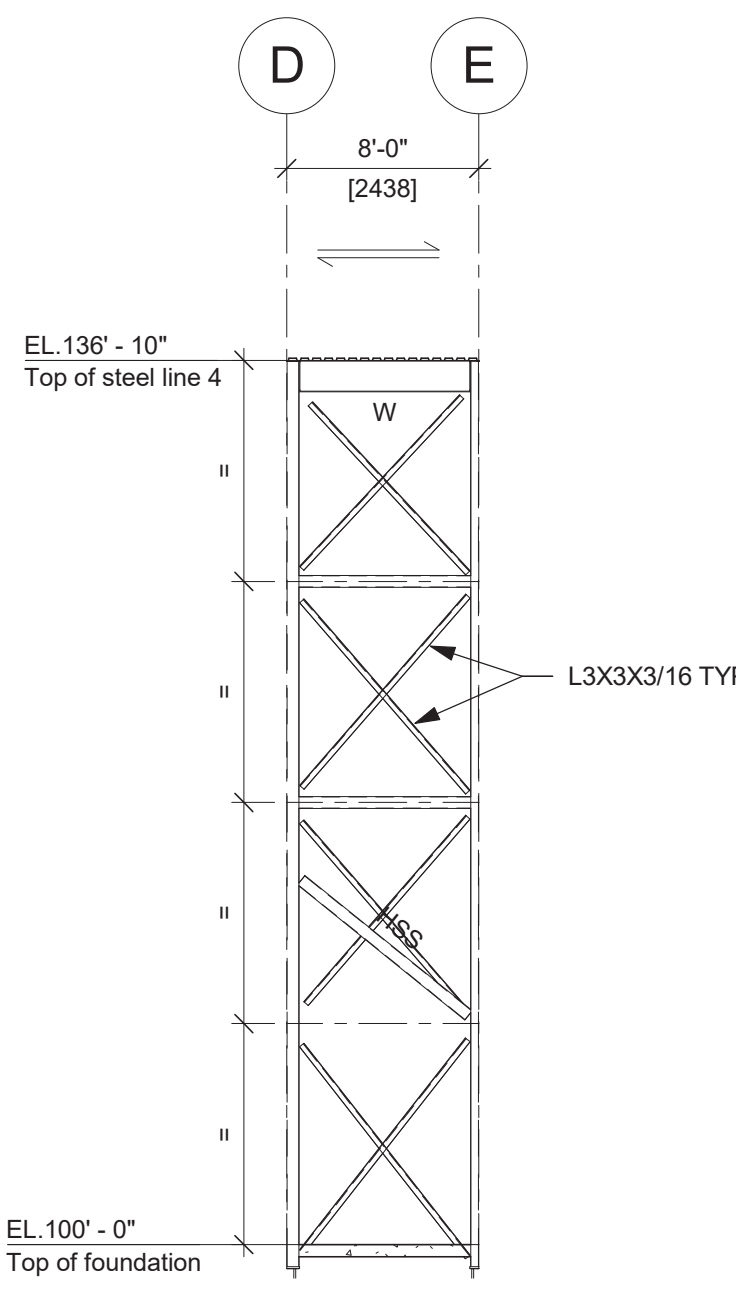
**Proposition panel & roof gridline 4**  
1/12" = 1'-0"



**WALL SECTION TYP.**  
1' = 1'-0"

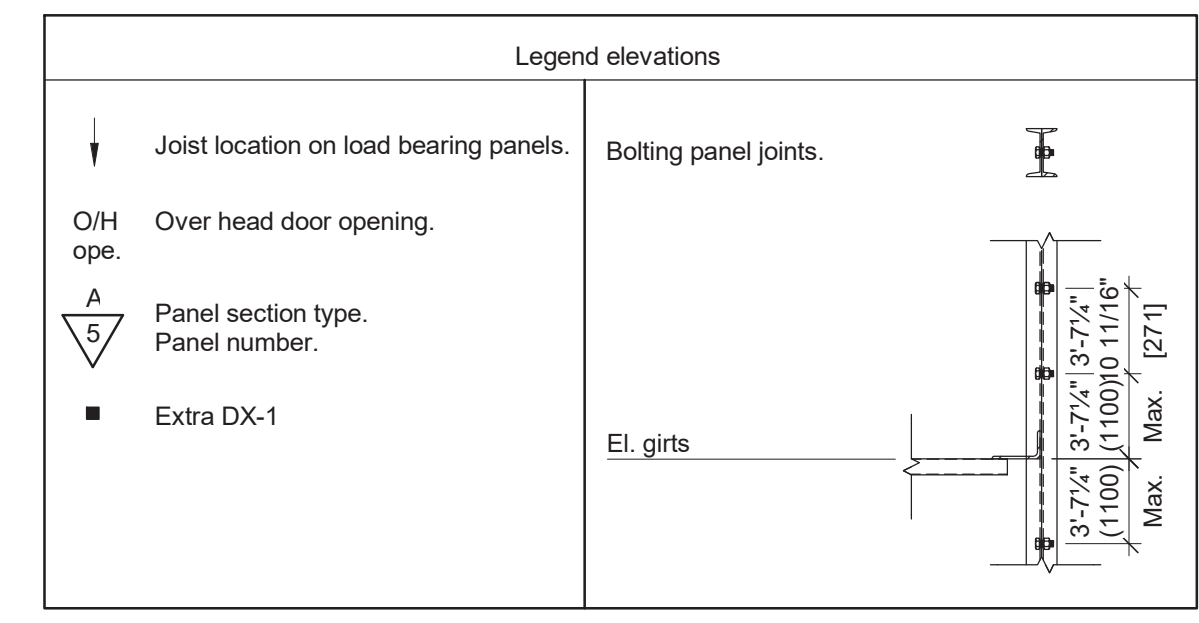


**ELEVATION LINE 3 (B @ C)**  
1/8" = 1'-0"



**ELEVATION LINE 3 (D @ E)**  
1/8" = 1'-0"

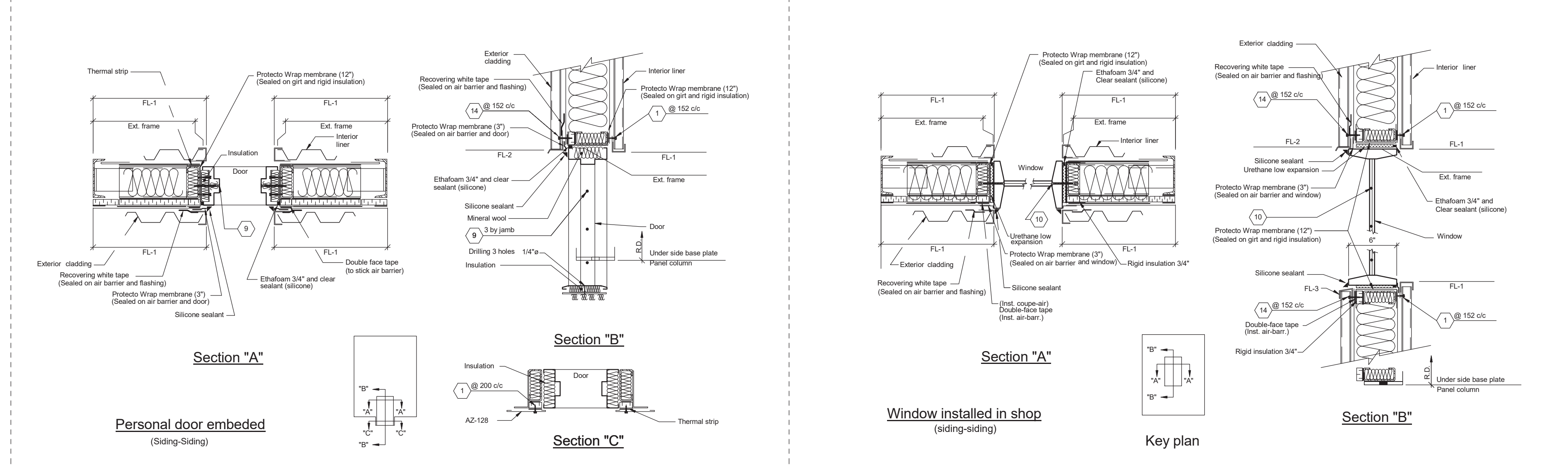
**FOR PERMIT**



WINDOW SCHEDULE						
IDENTIFIANT	QUANTITY	INSTALLATION	TYPE	SIZES (EXT. OF FRAME (WIDTH & HEIGHT))	FRAME COLOR	SWING SIDE
W1	5	SHOP	Fixed aluminum window with thermal break and sealed glass (Type Contentional)	6'-0" x 4'-0"	White aluminum (exterior & interior)	FIXE

DOOR SCHEDULE									
Identity	Nbre	Installation	Insulated	Insulation	Dimensions	Swing side	Hardware	Remarks	
D1	2	SHOP	Out	Yes	36" x 64"	Steel frame 16 ga. with thermal break	(3) Hinges non-rising removable pin Panic bar with outside trim (230L) Threshold Door closer Door chain Weatherstrip Head cap	Refer to supplier's std. hardware	

Supplier's standard hardware:			
- Hinges: Stanley FBH 179 4.5" x 4"	- Exit device: Von Duprin 22 x 689 with outside trim 230L	- Permanent cylinder: Schlage 00001C 626	- Door closure: LCN 1501 1500
- Head and jamb seal: Unique 1650	- Bottom seal: Unique D04	- Threshold: Unique AB3+ABT+AB4	



REVISION	DATE	DESCRIPTION	ISSUED	CHANGED
B	09/27/2017	For permit		M.V.
A	08/23/2017	For approval		M.V.

**CANAM**  
270, Chemin du Tremblay, Boucherville, Québec, Canada, J4B 6X9  
Phone: (450) 641-4000  
Toll Free: (866) 506-4000  
Fax: (450) 641-4001

**NEA HANGAR PORTLAND MAINE, USA**

CONTRACT NUMBER	DRAWING NUMBER	DIVISION	REVISION
T05942	Mx4		B