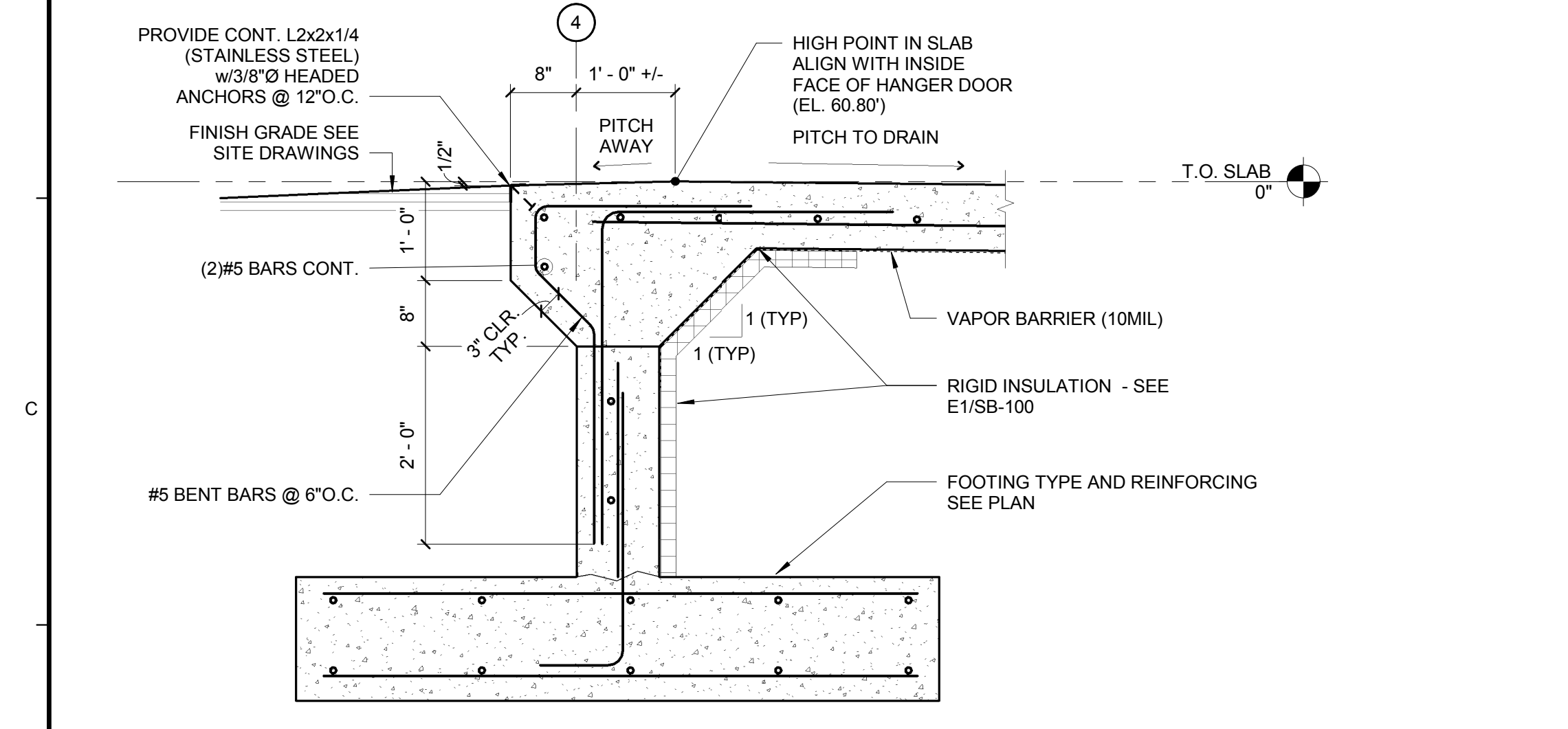
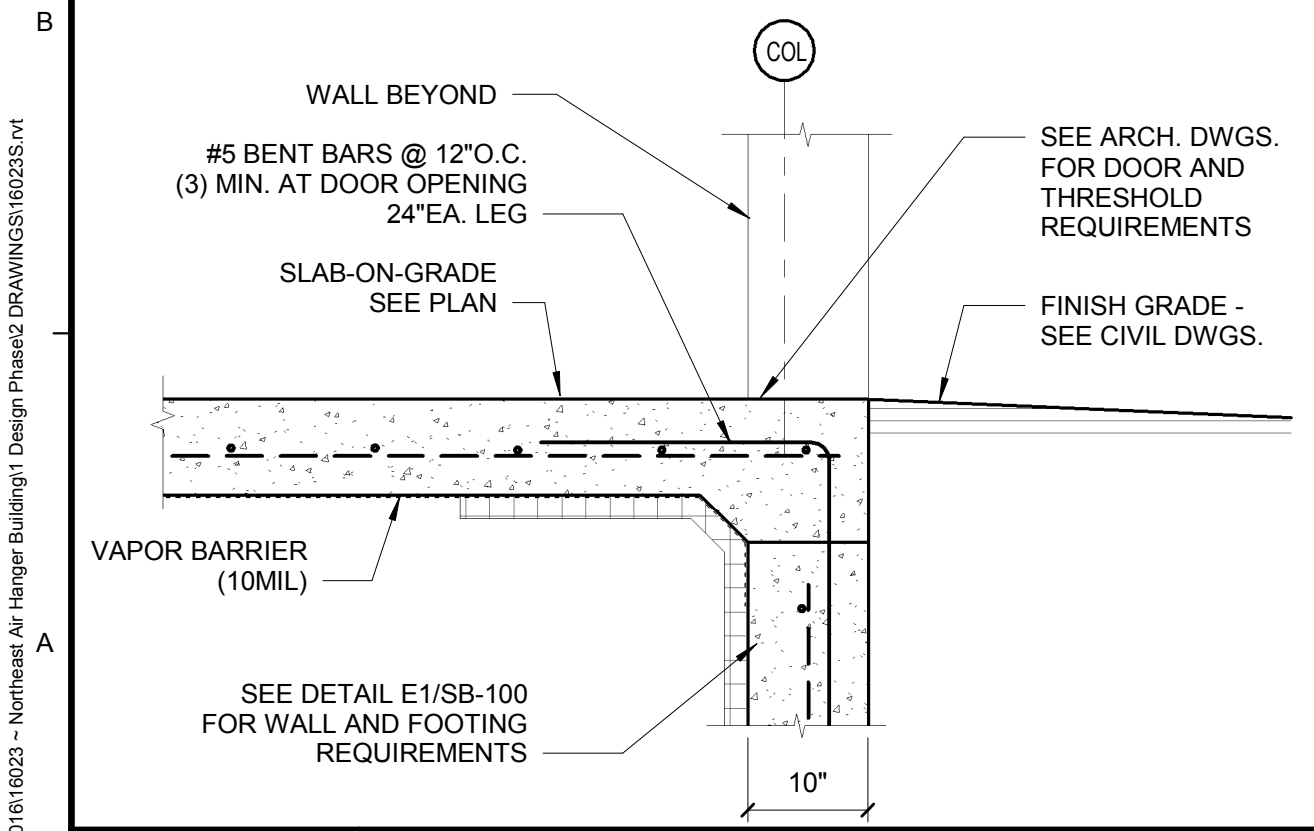


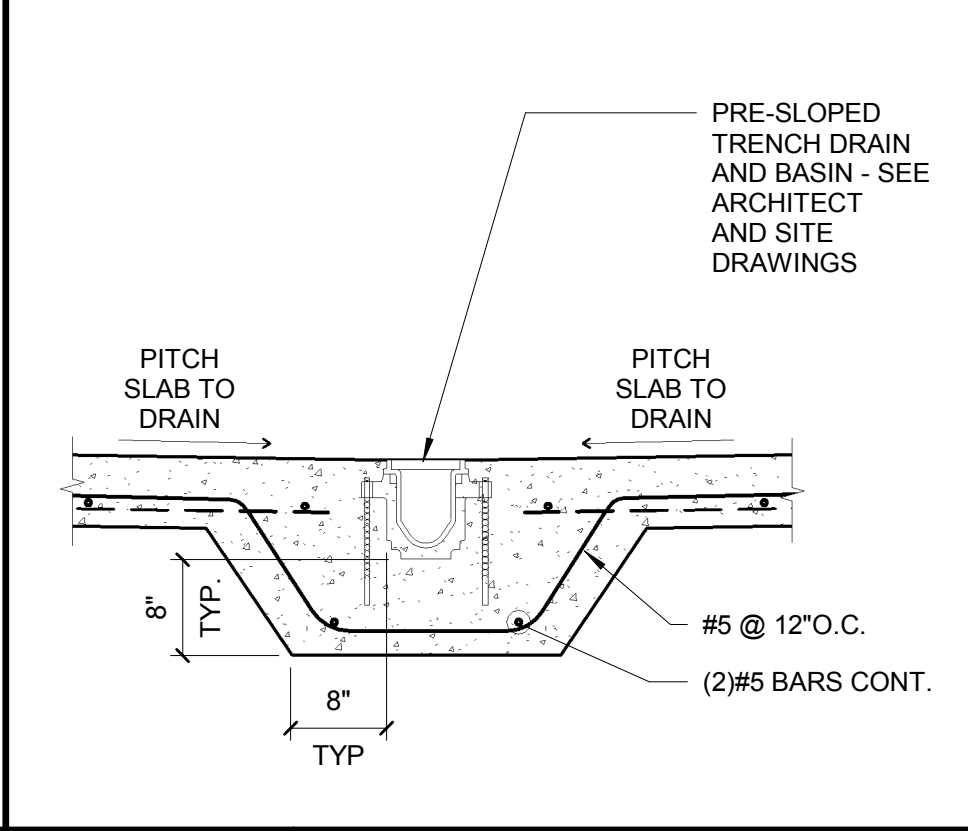
E1 TYPICAL FOUNDATION WALL DETAIL
3/4" = 1'-0"



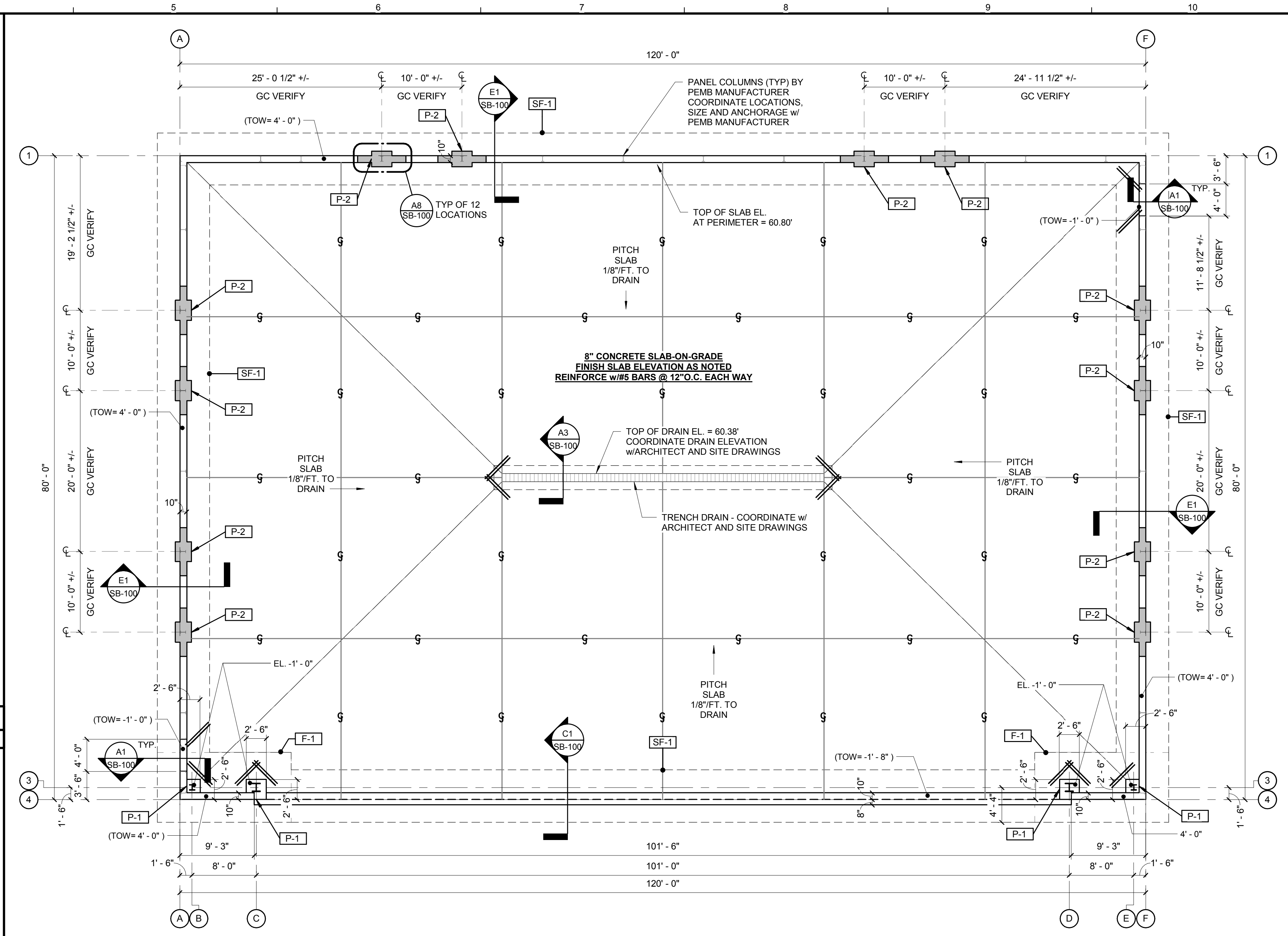
C1 DETAIL AT HANGER DOOR ENTRY
3/4" = 1'-0"



A1 TYPICAL EXT. FOUNDATION WALL AT DOOR
3/4" = 1'-0"



A3 DETAIL AT TRENCH DRAIN
3/4" = 1'-0"

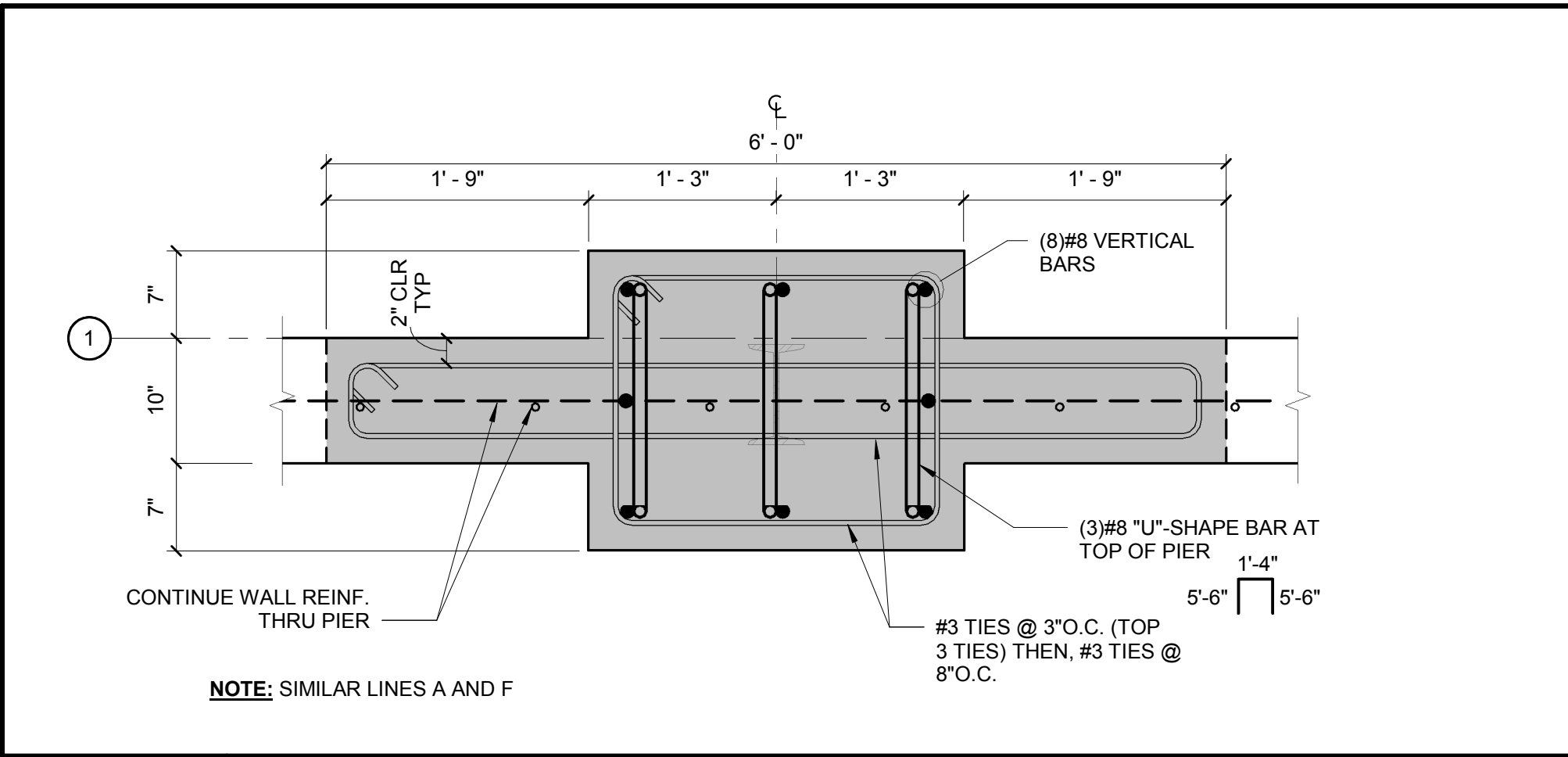
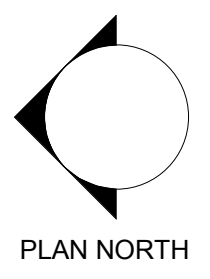


A5 STRUCTURAL ~ FOUNDATION PLAN
1/8" = 1'-0"

- PLAN NOTES AND LEGEND:**
1. FINISH SLAB ELEVATION = 60.80' (NOMINALLY REFERRED TO 0'-0" IN THESE DRAWINGS) UNLESS NOTED OTHERWISE.
 2. TOP OF WALL ELEVATION = 4'-0" UNLESS NOTED OTHERWISE
 3. BOTTOM OF FOOTING SHALL BE 4'-6" MIN. BELOW FINISHED GRADE
- F-#** INDICATES FOOTING TYPE - SEE A5/SB-100 FOR SCHEDULE
P-# INDICATES CONCRETE PIER - SEE A5/SB-100 FOR SCHEDULE
SF-# INDICATES STRIP FOOTING TYPE - SEE A5/SB-100 FOR SCHEDULE

PIER SCHEDULE		
MARK	SIZE	REINFORCING
P-1	30 x 30	(8)#8 VERTICAL BARS w/#3 TIES @ 12" O.C., (3) TIES @ 3" O.C. AT TOP
P-2	24 x 30	SEE DETAIL A8/SB-100

FOOTING SCHEDULE		
MARK	SIZE	REINFORCING
F-1	8'-8" x 16'-8" x 2'-0"	#6 @ 12" O.C. EACH WAY - TOP AND BOTTOM
SF-1	STRIP FOOTING - 6'-6" x 1'-3"	#6 @ 12" O.C. TOP AND BOTTOM (LONG BAR); #6 @ 14" O.C. TOP AND BOTTOM (TRANSVERSE BAR)



A8 PLANVIEW OF INLINE WALL PIER
1" = 1'-0"

160 Veranda Street
Portland, Maine 04103
T: 207.221.2260
F: 207.221.2266
Web: www.allied-eng.com

Allied Engineering
Structural Mechanical Electrical Commissioning

REGISTERED PROFESSIONAL ENGINEER
STATE OF MAINE
WILLIAM FALPHE
LICENSE # 10001
EXPIRES 12/31/2017

GRANT HAYS ASSOCIATES
ARCHITECTURE & INTERIOR DESIGN
P.O. BOX 6199 FALMOUTH MAINE 04105
207.871.5900 gha@granthays.com

STRUCTURAL - FOUNDATION PLAN

NORTH EAST AIR
PORTLAND INTERNATIONAL AIRPORT
1011 WESTBROOK STREET
PORTLAND, MAINE 04102

SB-100