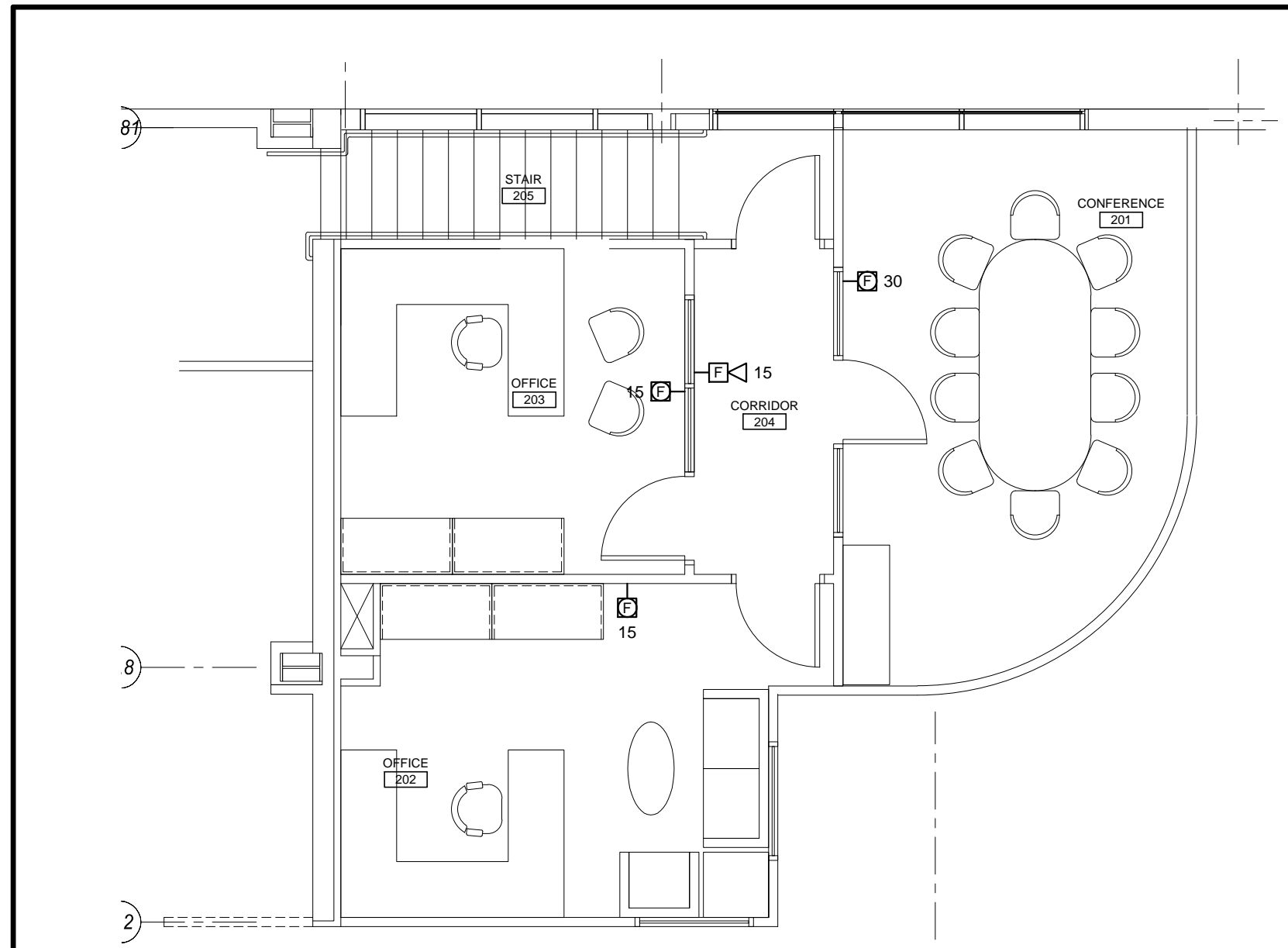
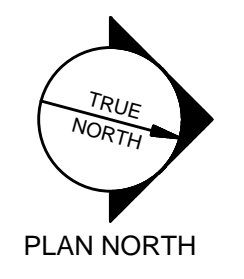
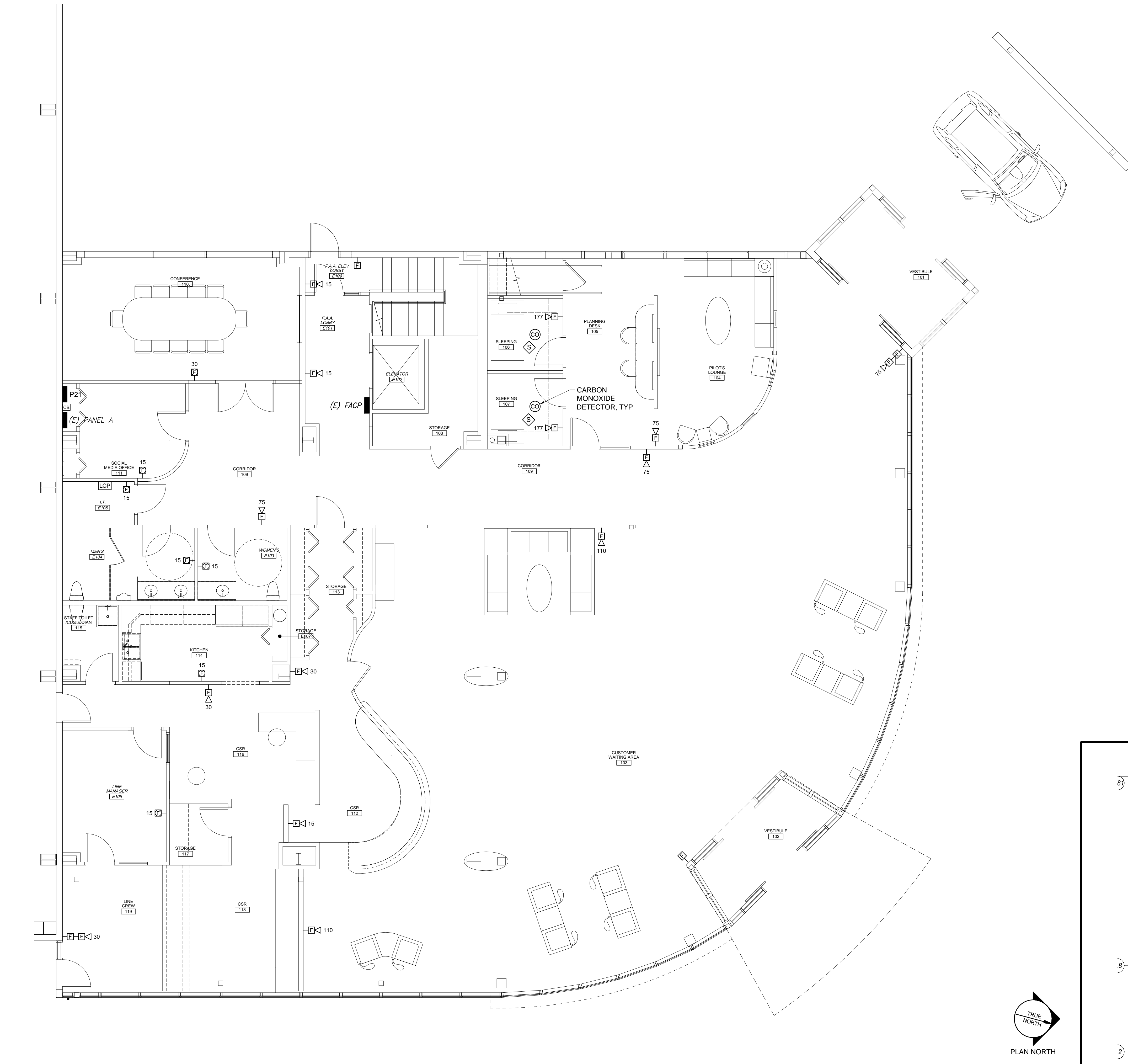


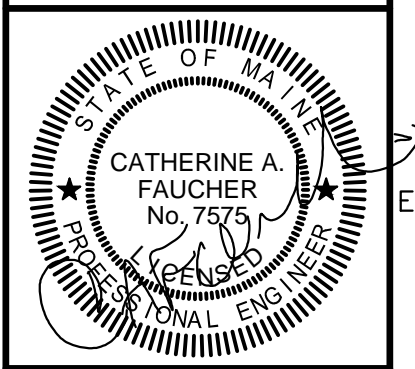
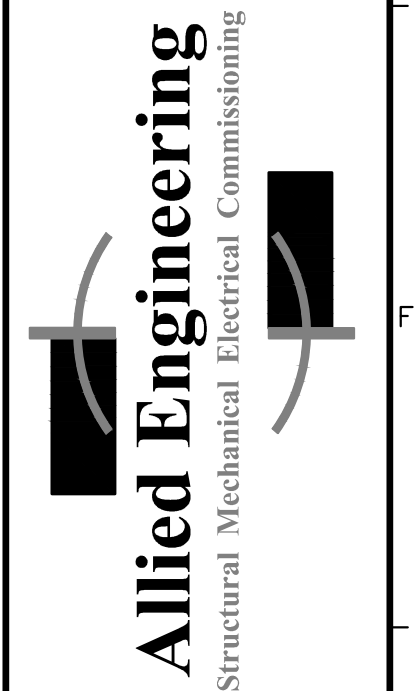
N:\Projects\2015\15028 - Northeast Air Terminal Building\00 Drawing Files\2015\15028_E.dwg Feb 16, 2016 - 2:48pm



A1 ELECTRICAL POWER AND SYSTEMS PLAN
1/8" = 1'-0"

A8 SECOND FLOOR
3/16" = 1'-0"

160 Veranda Street
Portland, Maine 04103
T: 207.221.2260
F: 207.221.2266
Web: www.allied-eng.com



GRANT HAYS ASSOCIATES
ARCHITECTURE & INTERIOR DESIGN
P.O. BOX 6799 FALMOUTH MAINE 04105
207.571.9900 gha@granthays.com

Date: 02-12-2016
Drawn By: DLL
Checked By: SRM
Project Mgr: WPF
Project No: 15028
Cad File: 15028_E.DWG
Graphic Scale: 1"

FIRE ALARM PLAN
NEA NORTH EAST AIR
PORTLAND INTERNATIONAL AIRPORT
PORTLAND, MAINE 04102
1011 WESTBROOK STREET
© Copyright 2016 ALLIED ENGINEERING, INC.

FA-1