

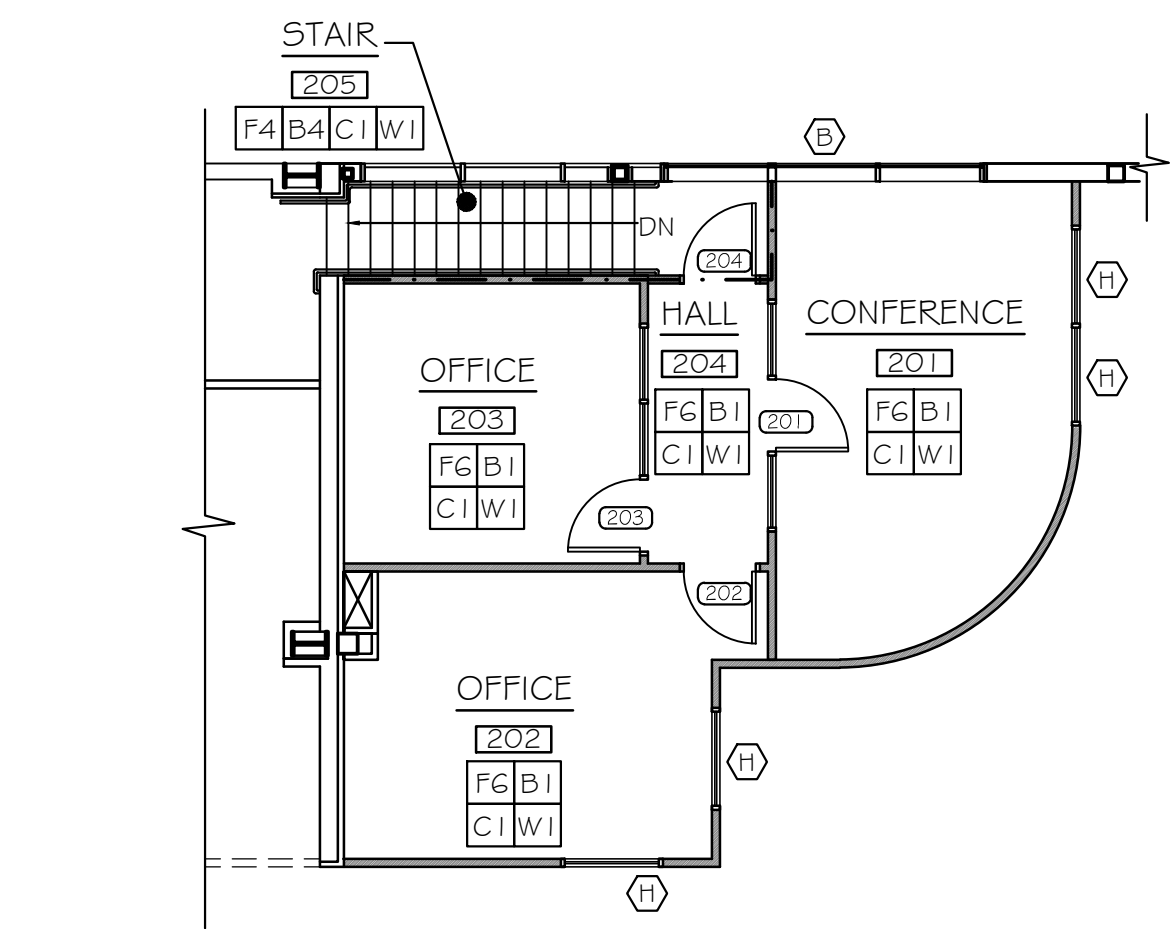
PAINT AT ALL EXPOSED STRUCTURAL STEEL COLUMNS, BEAMS & GIRTS (NOT AT ROOF FRAMING)

MFR: TNE MEC OR EQUAL PER ARCHITECT
 MODEL: SERIES 1028 / 1029 ENDURATONE (2 COATS)
 COLOR: MATCH CLEAR ANODIZED ALUMINUM CURTAIN WALL FRAME
 FINISH: SATIN

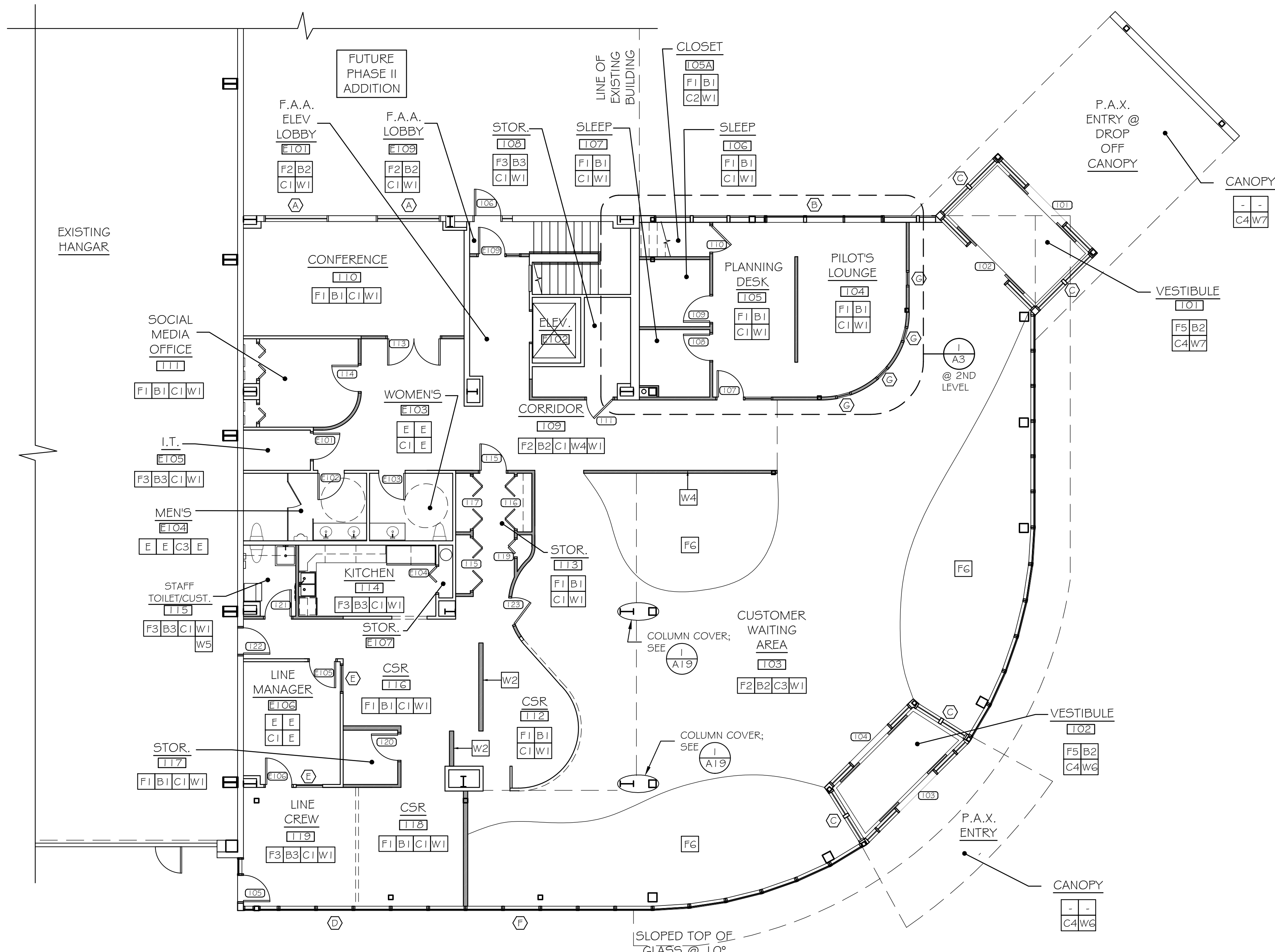
TAG LEGEND

F | B | C | W

F | B
C | W



OFFICES ABOVE PILOT'S SUITE
 SCALE: 1/8" = 1'-0"



FINISHES PLAN

SCALE: 1/8" = 1'-0"

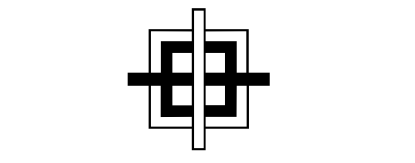


PARTITION LEGEND

NEW
 EXISTING

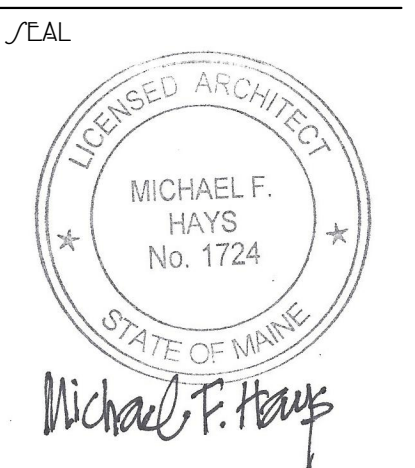
FINISHES LEGEND

TAG	FLOORS (F)	TAG	WALL BASE (B)
F1	CARPET TILE MFR: SHAW CONTRACT GROUP MODEL: 'COLLECTIVE TIME' SIZE: 24" x 24" WEIGHT: 22 oz/yd ² SOLUTION Q EXTREME NYLON BACKING: E20-WORK TILE (SECONDARY) COLOR: #5T089 'ACTIVITY' INSTALLATION METHOD: QUARTER TURN (TBV))	B1	RESILIENT - MILLWORK PROFILE MFR: JOHNSONITE MODEL: MILLWORK INFLECTION MIN - XX - G HEIGHT: 5 1/2" THICKNESS: 0.375 INCHES COLOR: UB #1 - SNOW WHITE
F2	PORCELAIN TILE MFR: DAL TILE MODEL: AMBASSADOR SIZE: 24" x 24" THICKNESS: 3/8" COLOR: AM 33 'VOYAGER BLACK' UNPOLISHED GROUT MFR/COLOR: MAPEI #09 'GRAY'	B2	PORCELAIN TILE MFR: DAL TILE MODEL: AMBASSADOR SIZE: 24" x 24" THICKNESS: 3/8" COLOR: AM 33 'VOYAGER BLACK' UNPOLISHED GROUT MFR/COLOR: MAPEI #09 'GRAY'
F3	VINYL COMPOSITION TILE MFR: JOHNSONITE MODEL: AZROCK SIZE: 12" x 12" THICKNESS: 1/8" COLOR: TBD BY ARCHITECT	B3	RESILIENT - TRADITIONAL MFR: JOHNSONITE MODEL: BASEWORKS THERMOSET RUBBER BASE SIZE: 4" THICKNESS: 1/2" PROFILE: TOP COVE SET COLOR: TBD BY ARCHITECT
F4	STAIR TREADS/RISERS - RUBBER MFR: ROPPE MATERIAL: RUBBER SURFACE DESIGN: #92 LOW PROFILE RAISED CIRCULAR DESIGN MATCH EXISTING (F.V. #616 PLATINUM)	B4	RESILIENT - STAIR ACQY MFR: JOHNSONITE MATERIAL: RUBBER STYLE: VIRCN - XX - A COLOR:
F5	RECESSED ENTRY SYSTEM MFR: MATS INC. MODEL: SAFE TRACK MATERIAL: ALUMINUM FRAME TYPE: 'AO' PANEL SIZE: 48" X 42" (MAX.) X 1" THICK DEPTH: 1 1/2" (INCLUDING FRAME)	B5	
F6	BROADLOOM CARPET MFR: SHAW CONTRACT GROUP MODEL: 5A221 'FAULT' CONSTRUCTION: MULTI-LEVEL PATTERN WTS / LOOP WEIGHT: 40 oz/yd ² ECO SOLUTION Q NYLON BACKING: ULTRALOC (SECONDARY) COLOR: #20506 'ELEMENTAL PLATINUM'	B6	
F7	RUBBER TRANSITION STRIPS (WHEELED TRAFFIC) MFR: ROPPE MATERIAL: RUBBER STYLE: CTA-20-L; CTA-20-K; CTA-20-H COLOR: TBD BY ARCHITECT	B7	
F8		B8	
TAG	CEILINGS (C)	TAG	WALLS (W)
C1	SUSPENDED ACOUSTICAL CEILING TILE MFR: ARMSTRONG MODEL: DUNE 1774 ANGLED REGULAR LAY-IN SIZE: 24" x 24" x 5/8" COLOR: WHITE	W1	PAINT MFR: BENJAMIN MOORE TYPE: SEE PAINT PLAN / SCHEDULE COLOR: SEE PAINT PLAN / SCHEDULE
	SUSPENDED ACOUSTICAL CEILING GRID MFR: ARMSTRONG MODEL: PRELUDE ML PROFILE: 1 1/2" COLOR: WHITE WEIGHT: MEDIUM DUTY	W2	3-FORM MFR: ARMSTRONG STYLE: 'MOTION' SHEET SIZE: 4' x 8' THICKNESS: 3/4" GAGE COLOR: BRUSHED ALUMINUM ORIENTATION: HORIZONTAL
C2	GYPSUM WALL BOARD THICKNESS: 5/8" FIRE CODE FINISH: PRIMER + 2 COATS PAINT (SEE PAINT SCHEDULE / PLAN) NOTE: FOLLOW SLOPE OF STAIR STRINGERS	W3	3-FORM MFR: ARMSTRONG STYLE: VARIA ECORESIN SHEET SIZE: 4' x 8' THICKNESS: 1/2" GAGE FINISH: SANDSTONE COLOR: HIGHERS ROSEWOOD LAYERS: +WHITE OUT ORIENTATION: HORIZONTAL GRAIN
C3	DRY-FALL PAINT AT HIGH ROOF STRUCTURE MFR: BENJAMIN MOORE MODEL: PRO-FINISH INTERIOR LATEX DRY-FALL PF 33 COLOR: WHITE FINISH: SEMI-GLOSS	W4	WALL COVERING: (#35/LY MATERIAL ALLOWANCE) MFR: TBD PRODUCT: TBD WEIGHT: TBD WIDTH: TBD COLOR: TBD
C4	ALUMINUM LINEAR CEILING SYSTEM MFR: ARMSTRONG MODEL: METALWORKS LINEAR EXTERIOR PROFILE: M1-UNPERFORATED COLOR/FINISH: SILVER GRAY (SG2) PANEL WIDTH: 8"	W5	FRP: (48" A.F.F. w/ W1 ABOVE) MFR: MARLITE / NUDO PRODUCTS INC. PRODUCT: STANDARD FRP FINISH: PEBBLED COLOR: XXX TBD XXX
C5		W6	ALUMINUM PANNING/PANELS: (SAME AS STOREFRONT SYSTEM)
C6		W7	



GRANT HAYS ASSOCIATES

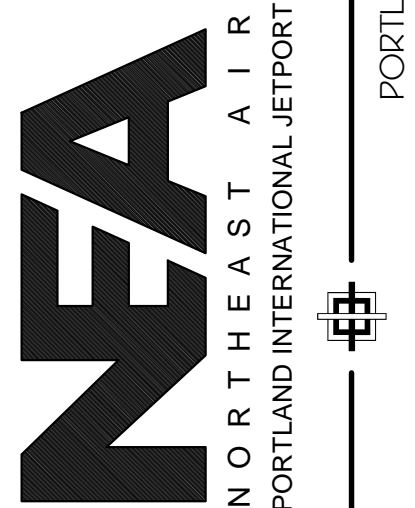
ARCHITECTURE & INTERIOR DESIGN
 P.O. BOX 6179 FALMOUTH MAINE 04105
 207.871.5900 www.granthays.com



REVISIONS

DRAWING NAME

PORTLAND, MAINE 04102



1011 WETBROOK STREET

SHEET

PHASE I FINISHES PLAN

DATE: 19 FEB '16
 SCALE: 1/8" = 1'-0"
 DRAWN: BGH/mgk
 JOB NO: 150655
 SHEET

A3

COPYRIGHT REPRODUCTION OR REV. OF THIS DOCUMENT WITHOUT WRITTEN PERMISSION FROM GRANT HAYS ASSOCIATES IS PROHIBITED.