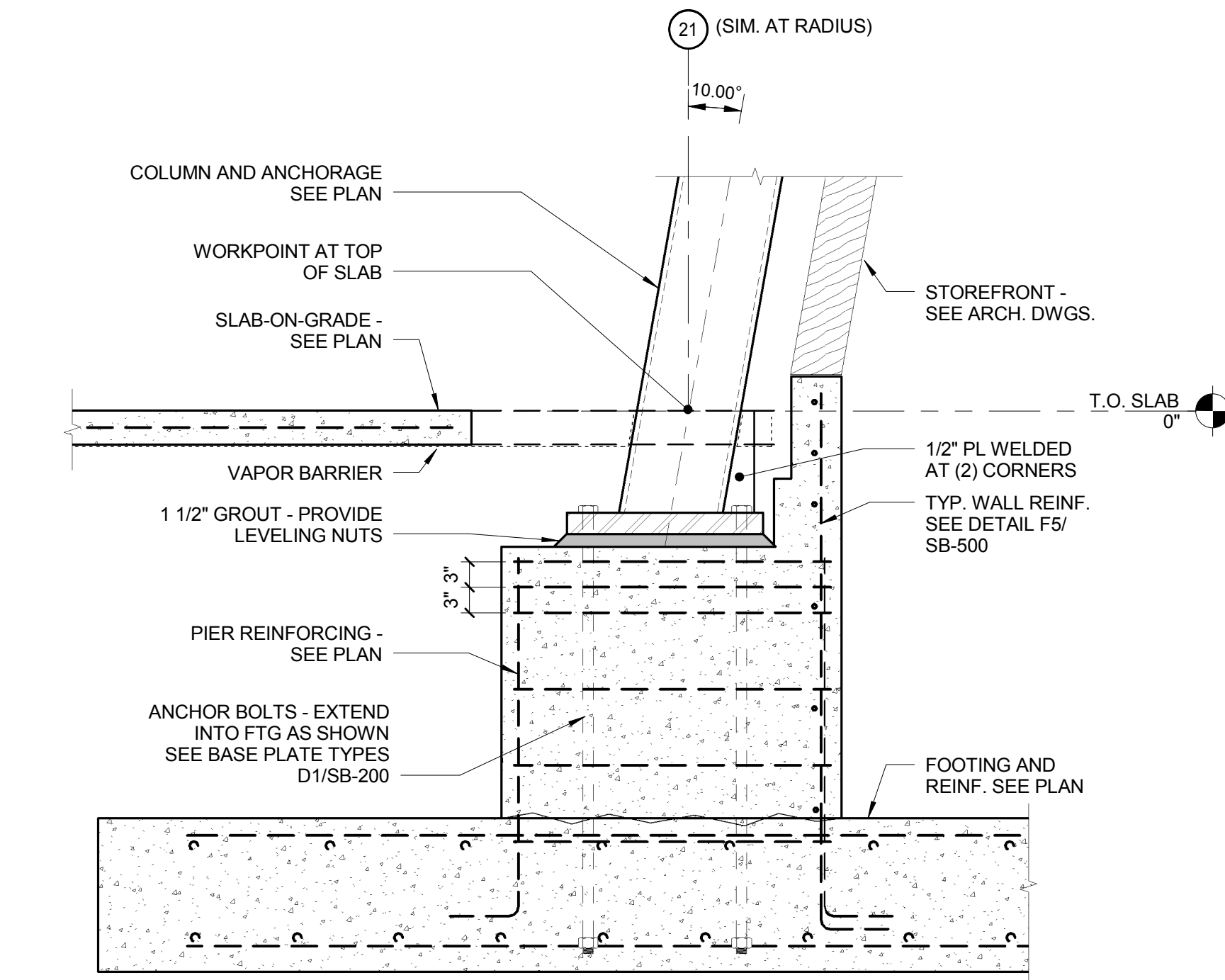
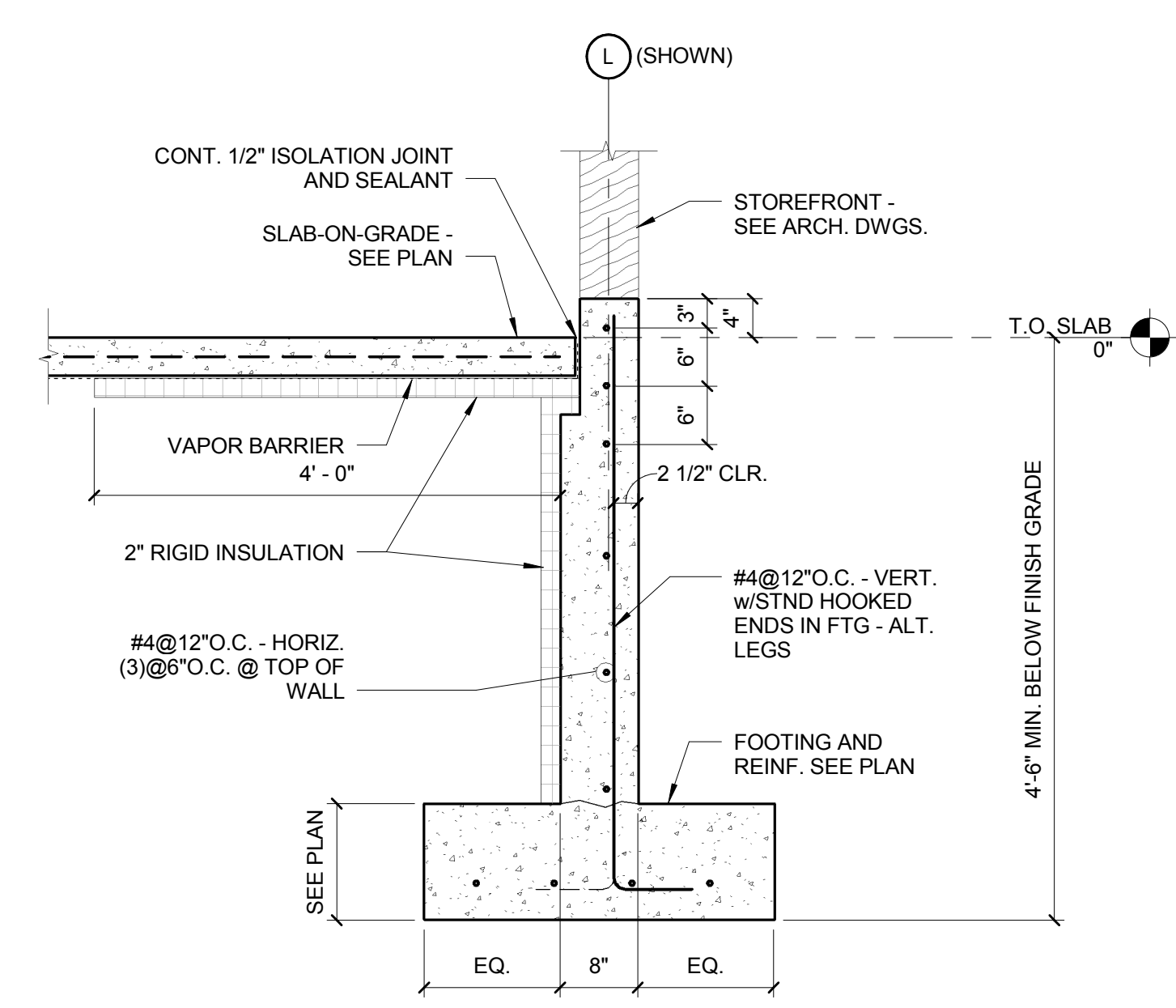


STRUCTURAL FILL	
SIEVE SIZE	PERCENT FINER
4 INCH	100
1/2 INCH	35 TO 70
1/4 INCH	25 TO 60
NO. 40	0 TO 25
NO. 200	0 TO 5

SELECT PIPE BACKFILL	
SIEVE SIZE	PERCENT FINER
3/8 INCH	80 TO 100
NO. 40	0 TO 5

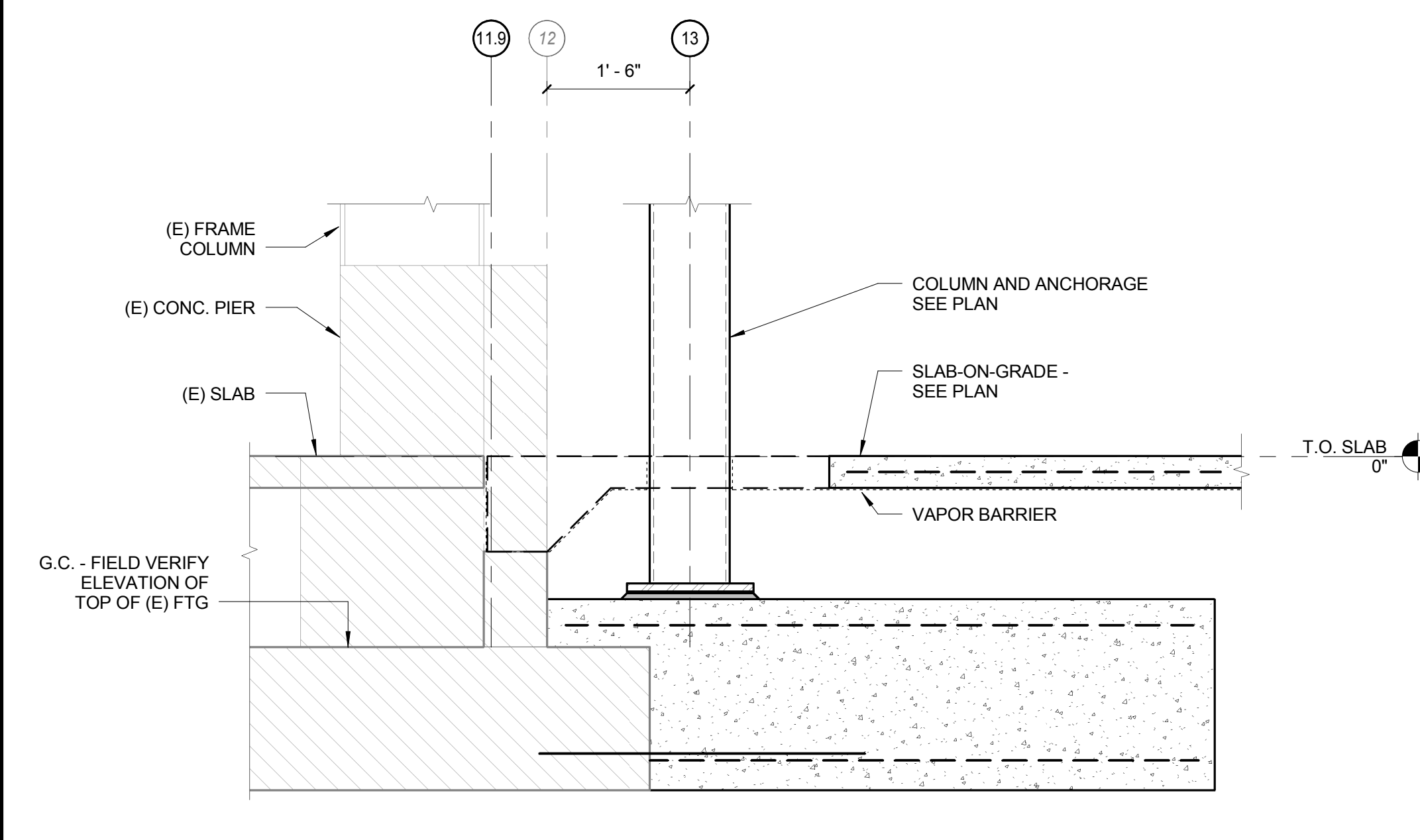
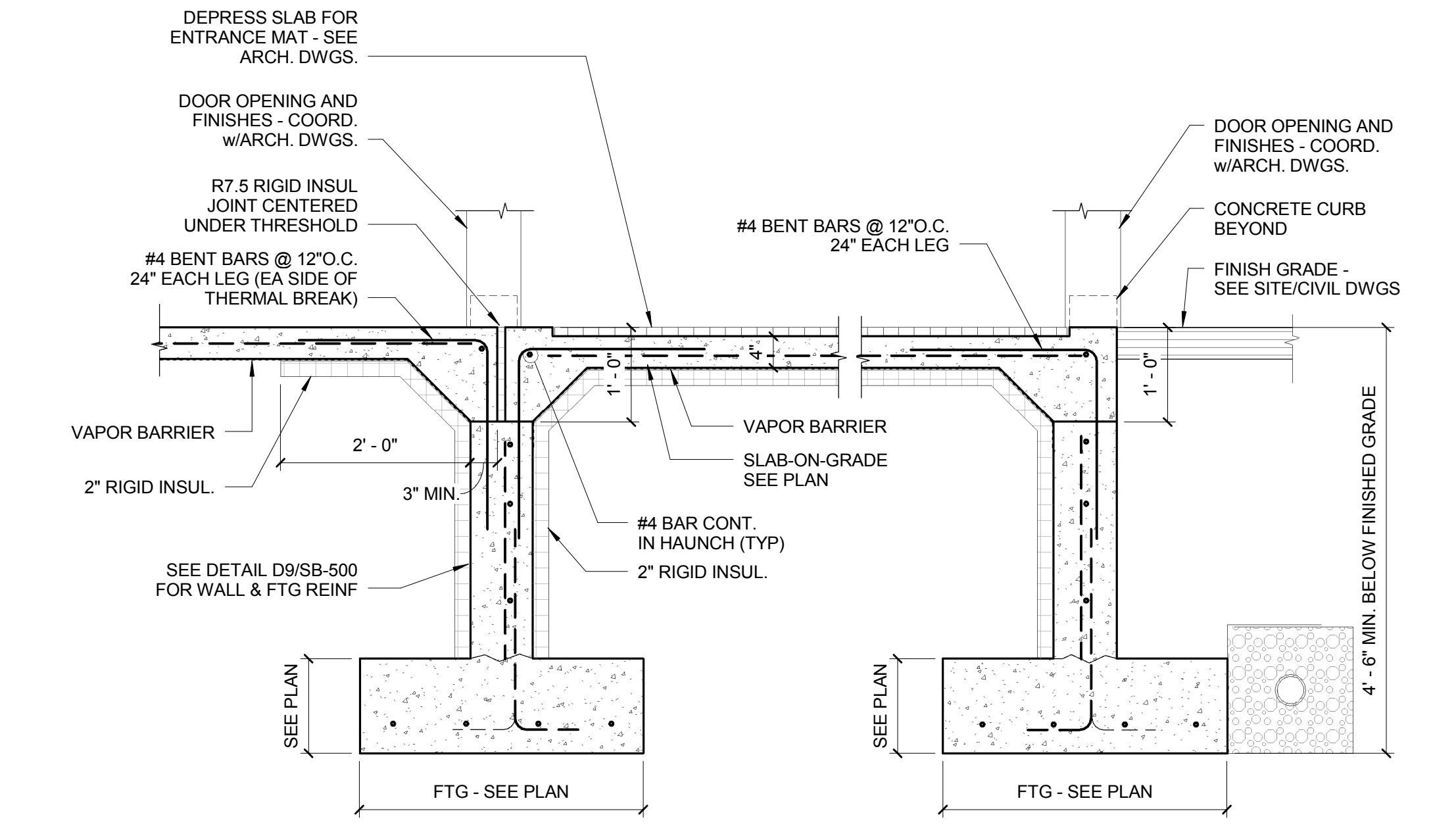
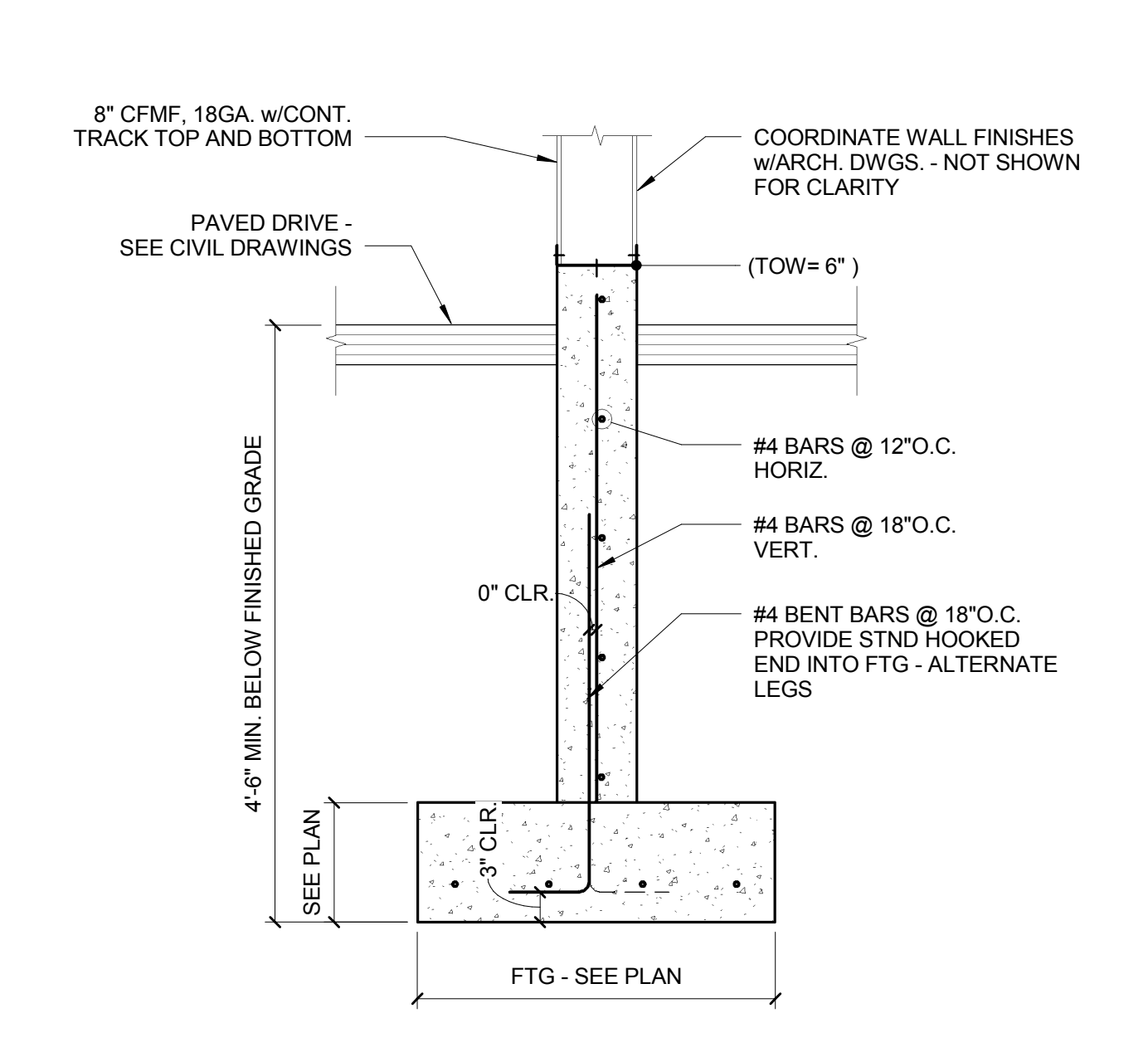
STRUCTURAL FILL	
SIEVE SIZE	PERCENT FINER
1 INCH	100
3/4 INCH	90 TO 100
1/4 INCH	25 TO 55
NO. 4	0 TO 10
NO. 10	0 TO 5



F1 TYPICAL PIPE TRENCH DETAIL
3/4" = 1'-0"

F5 DETAIL AT FOUNDATION WALL (TYP)
3/4" = 1'-0"

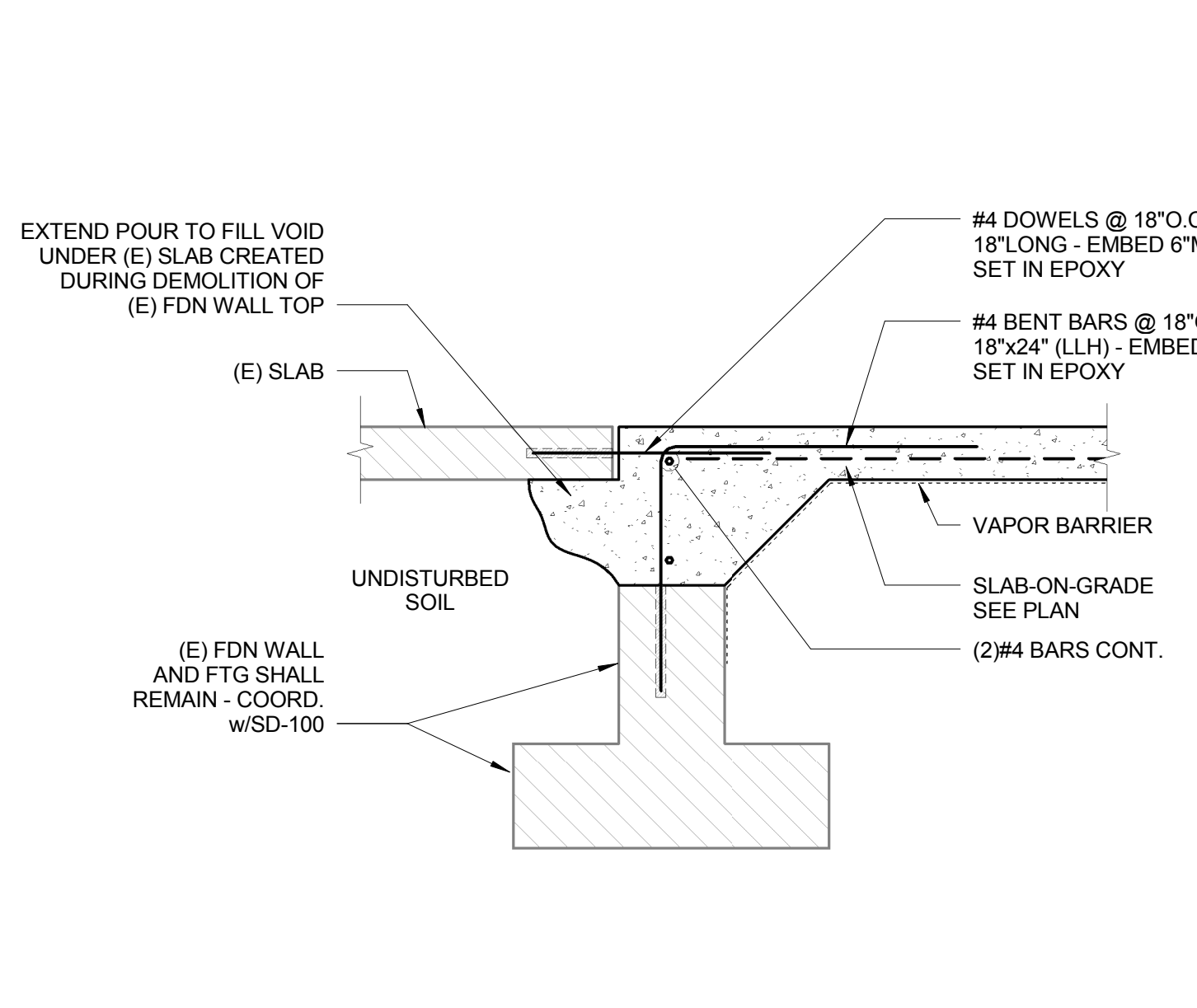
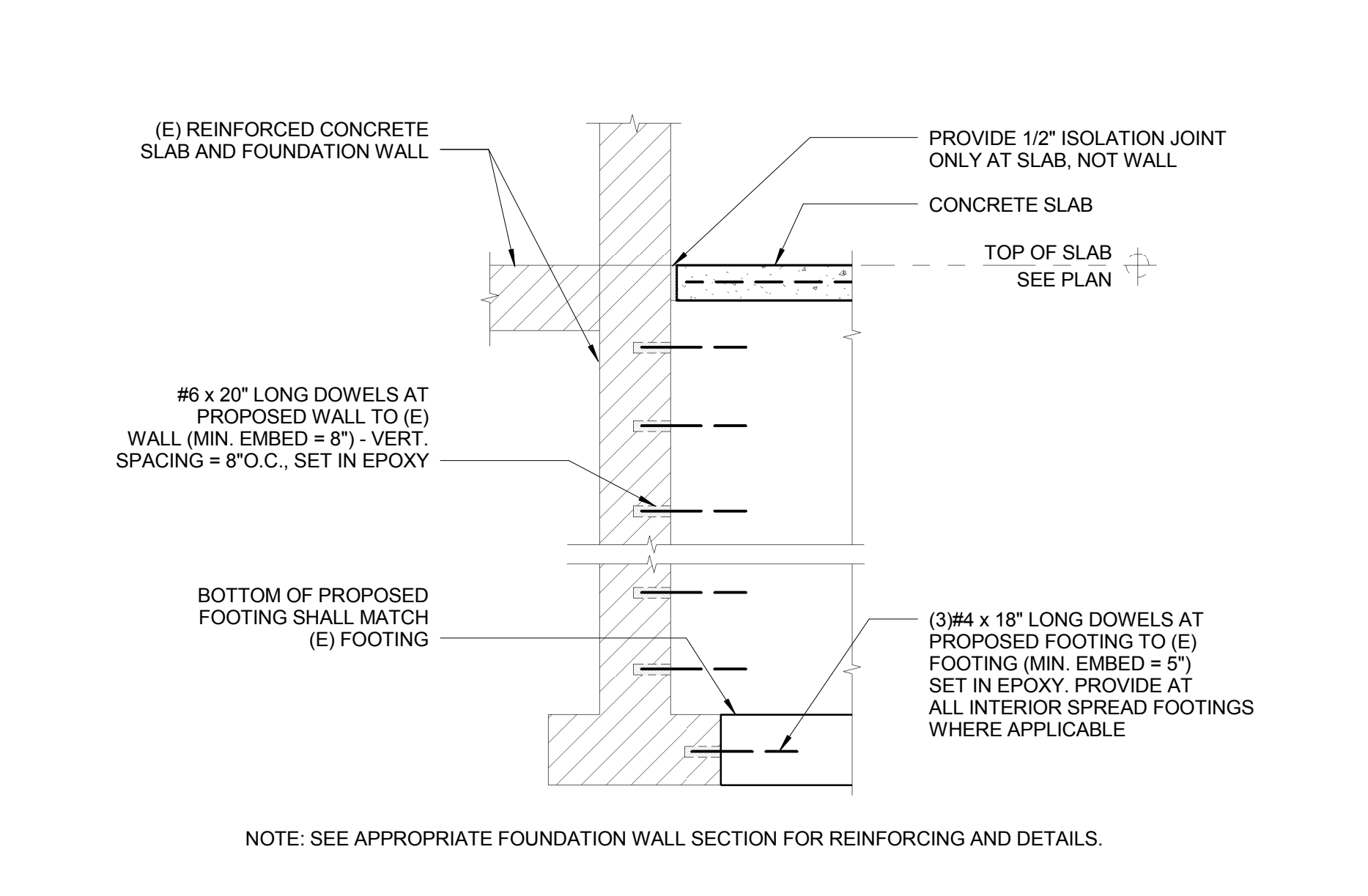
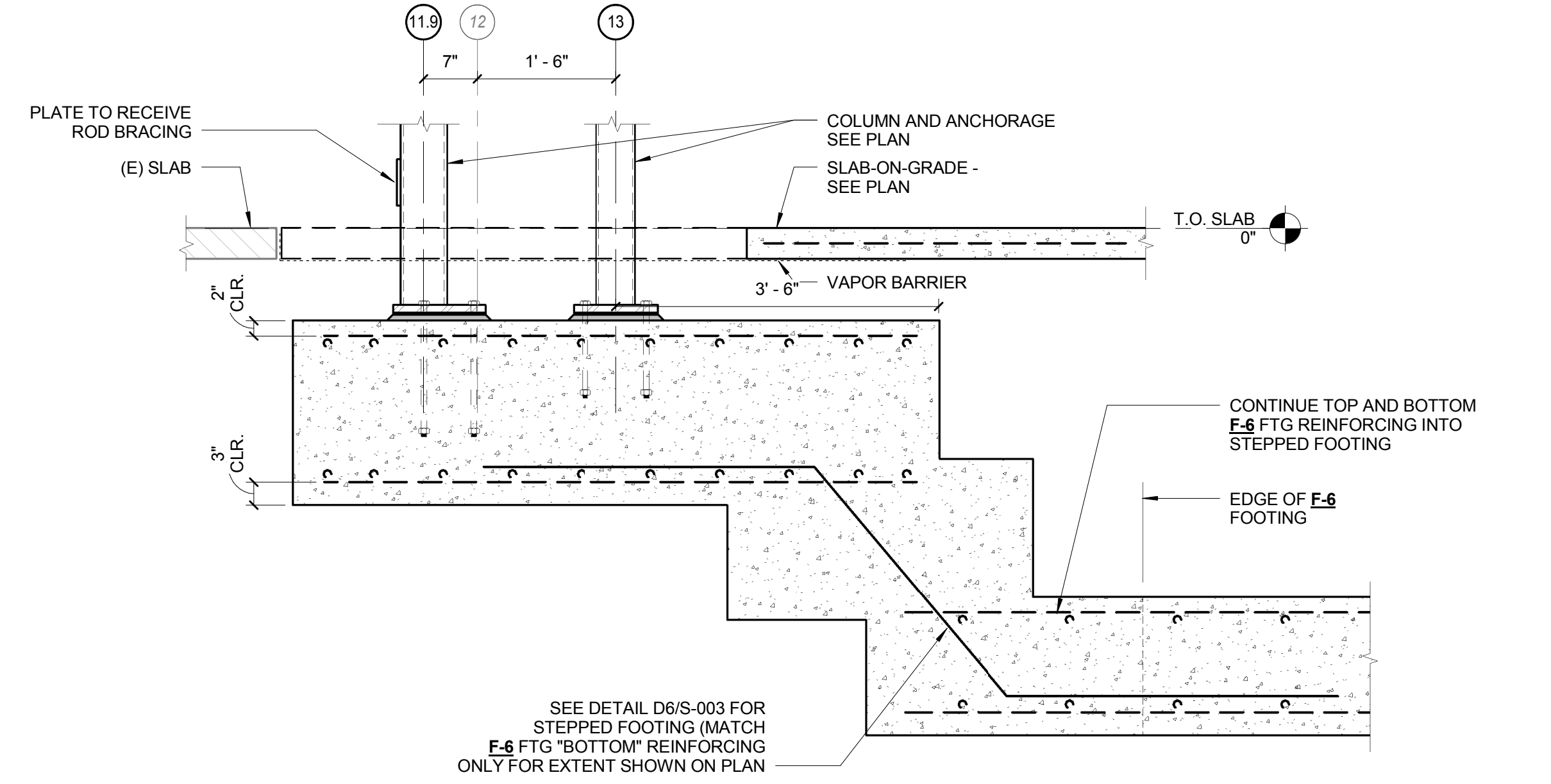
F8 DETAIL AT EXTERIOR INCLINED COLUMN
3/4" = 1'-0"



C1 DETAIL
3/4" = 1'-0"

C3 SECTION AT ENTRY
3/4" = 1'-0"

C7 DETAIL
3/4" = 1'-0"



A1 DETAIL
3/4" = 1'-0"

A5 PROPOSED WALL TIE-IN TO EXISTING
3/4" = 1'-0"

A8 SLAB TIE-IN TO EXISTING
1" = 1'-0"

160 Veranda Street
Portland, Maine 04103
T: 207.221.2260
F: 207.221.2266
Web: www.allied-eng.com

Allied Engineering
Structural Mechanical Electrical Commissioning

GRANT HAYS ASSOCIATES
ARCHITECTURE & INTERIOR DESIGN
P.O. BOX 6179 FALMOUTH MAINE 04105
207.871.5900 www.granthays.com

Date: -
Drawn By: PED
Checked By: JPM
Project Mgr: WPF
Project No: 15028
Card File: 15028S.rvt
Graphic Scale: 0" = 1'

STRUCTURAL - FOUNDATION DETAILS

N E A
N O R T H E A S T A I R
P O R T L A N D I N T E R N A T I O N A L A I R P O R T
1011 WESTBROOK STREET PORTLAND, MAINE 04102

SB-500

95% CD SET ~ 14 DECEMBER 2015 ~ NOT FOR CONSTRUCTION