

VARITRAC AIR TERMINAL SCHEDULE								
TAG	SERVES	Trane Model No.	INLET SIZE	CFM MIN	CFM RANGE MAX	OUTLET SIZE	MAX RAD. & DISCH. NC	A. P. D. AT MAX COOLING
VAV 1	OFFICES 202 & 203	VCCF05	5	150	300	10"x 8"	30	0.2"
VAV 2	CONF 201 & CORR 204	VCCF08	8	300	600	11"x10"	30	0.2"
VAV 3	LOUNGE 104 PLANNING 105	VCCF08	8	250	550	11"x10"	30	0.2"
VAV 4	SLEEP 106 & 107	VCCF04	4	60	120	10"x 8"	30	0.2"
VAV BP	BY PASS W/CHANGE OVER	VCCF08	8	0	760	10"x 8"	30	0.2"

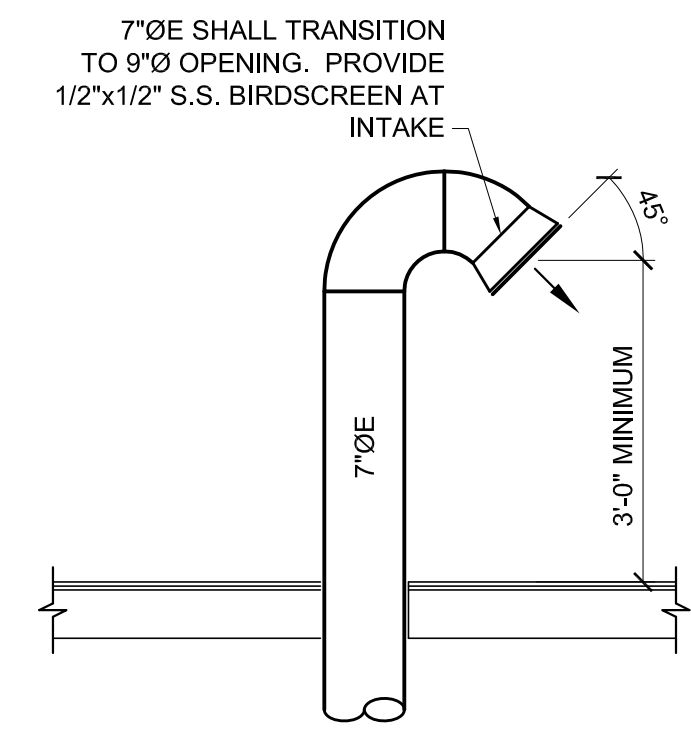
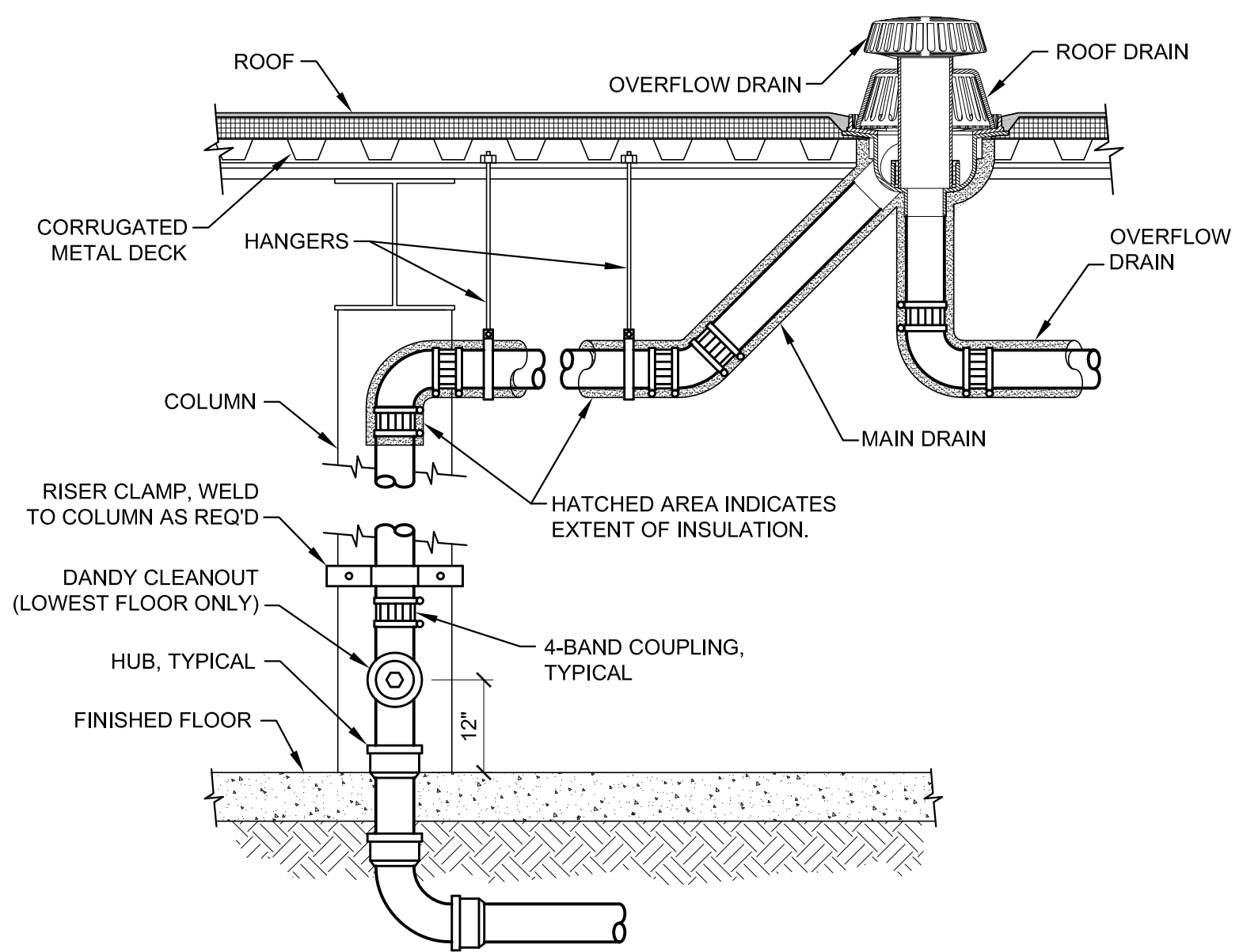
NOTES:  
 1. CONTROL CONTRACTOR: DAMPER ACTUATOR, TRANSFORMERS, AND LOW VOLTAGE WIRING.  
 2. ELECTRICAL CONTRACTOR: LINE VOLTAGE SIDE OF TRANSFORMERS.

PACKAGED ROOF TOP UNIT (RTU) SCHEDULE			
GENERAL	ITEM	RTU -1	RTU -2
SERVES		Two Story Pilots & Office Area	Waiting 103
MFR		Trane	Trane
MODEL		YH0048 (Precedent High Eff.)	YZD180 (Voyager High Eff. w/e-FLex)
NOMINAL TONS		4	15
MIN EER		15	12.5
ELECTRICAL			
VOLTS-PH-HZ		460/3/60	460/3/60
MCA / MCB		11.3 / 15	40 / 45
DISCONNECT SW. FURN BY		RTU MFR.	RTU MFR.
SMOKE DETECTOR (SD)		NA	RTU MFR.
SD FURN BY		NA	NA
SD INSTALLED IN DUCT BY		NA	NA
SD WIRED TO HVAC CONTROLS BY		NA	DIV 23
SD WIRED TO FIRE ALARM BY		NA	DIV 26
FILTER SECTION			
30% FILTERS (Quantity)		16" x 25" x 2"D (4)	20 x 20 x 2" & 20 x 16 x 2" (8 & 4)
MIN. AREA, sf		---	---
SUPPLY FAN			
DRIVE		DIRECT	DIRECT
VFD		NONE (VAV BY PASS)	VAV
AIRFLOW, cfm-Max		1,570	6000 (3000 min VFD)
MIN OUTSIDE AIR, cfm		170	150
ESP, in.wc.		1.25	1.40
RPM		1104	1750
MOTOR HP		1	5
GAS HEAT EXCHANGER			
EAT, deg-F. (AT 29% OA)		44	44
LAT, deg-F. (MAX TEMP.)		81	81
MBTUH (OUTPUT) MAX		64	286
MBTUH (INPUT) MAX		350	350
EXCHANGER		Stainless Steel	Stainless Steel
GAS		NAT GAS	NAT GAS
HEATING STAGES		1	FULL MOD.
MAX AIR PD, in. wc.		---	0.51"
MIN GAS INLET PRESSURE		7"	7"
MAX GAS INLET PRESSURE		14"	14"
GAS CONNECTION		1/2"	3/4"
POWER EXHAUSTER			
MOTOR HP		NA	0.63
DX COOLING COIL			
ENT. AIR DB/WB		80 / 67	80 / 69
TMBTUH		38	57.9
SMBTUH		31	40.5
TONS		60	5
REFRIGERANT		R410a	R410
CONDENSING SECTION			
AMBIENT DB, DEG-F		95	95
MIN OA TEMP		-5	-5
SCROLL COMP QTY (EA.)		1	3
COND FAN QTY (EA.)		1	2
COND FAN HP		0.4	0.5
MIN STAGES OF COOLING		1	3
OVERALL DIMENSIONS			
LENGTH (Not including OA Hood)		86"	122"
WIDTH		54"	85"
HEIGHT		41"	65"
CURB		24"	24"
OVERALL HEIGHT		65"	89"
OPERATING WEIGHT (LBS)		975	2,500

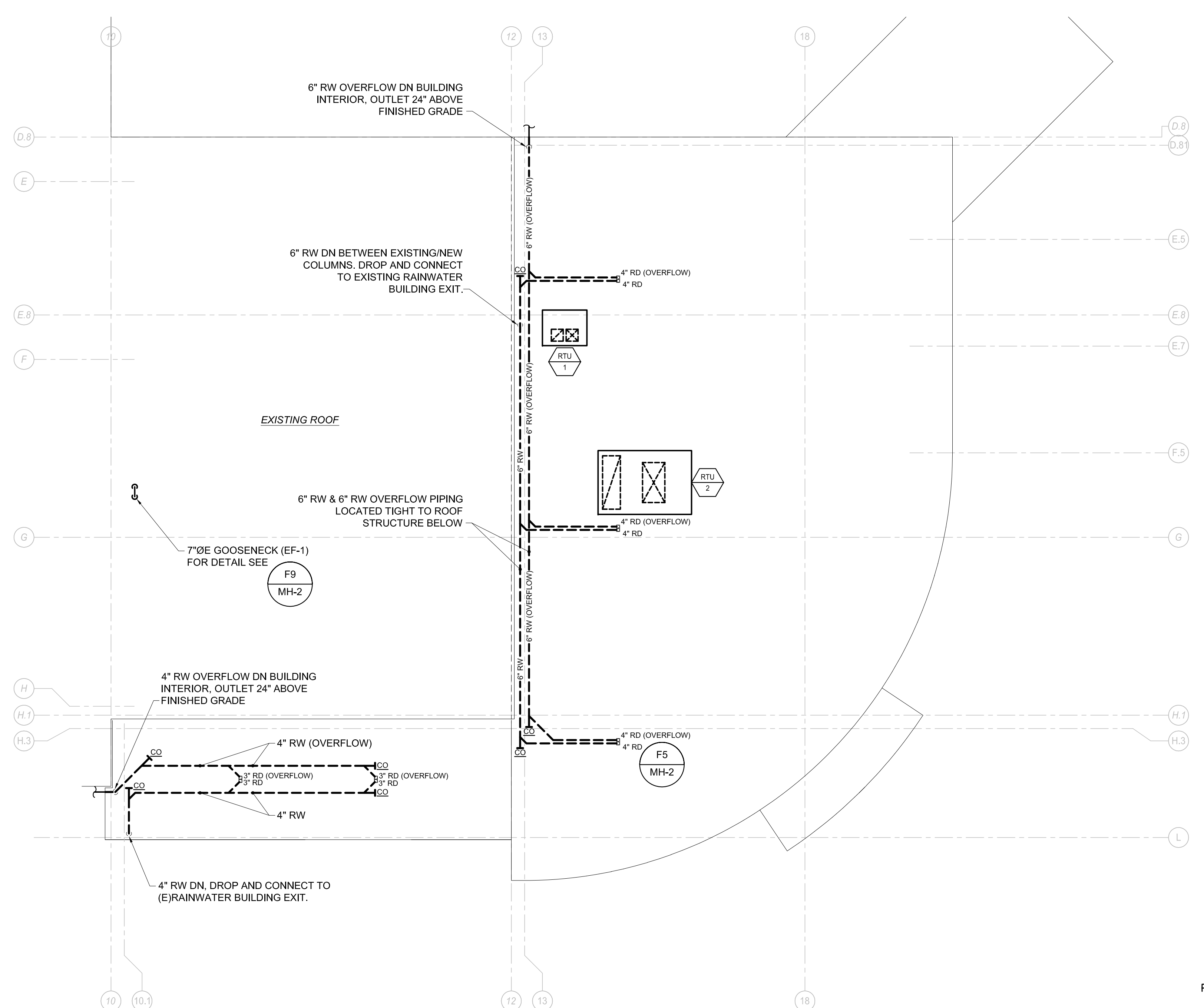
REGISTERS - GRILLES - DIFFUSERS (RGD) SCHEDULE										
TAG	PRICE MODEL	TYPE	NECK SIZE	FACE SIZE	CFM RANGE	MAX TOTAL P.D. (IN.W.C.)	MAX NO LEVEL	BORDER TYPE	BLOW	NOTES
S-1	SCD	SQ. CEILING SUPPLY DIFFUSER	6" DIA	12" X 12"	0-150	0.07"	16	SURFACE	4-WAY	
S-2	SCD	SQ. CEILING SUPPLY DIFFUSER	8" DIA	24" X 24"	151-275	0.07"	19	LAY-IN	4-WAY	
S-3	SCD	SQ. CEILING SUPPLY DIFFUSER	10" DIA	24" X 24"	276-450	0.07"	22	LAY-IN	4-WAY	
S-4	520D	STEEL/ALUM. DOUBLE DEFL. SUPPLY REGISTER	6" X 6"	8" X 8"	25-100	0.10"	23	SURFACE MT.	ADJUSTABLE	1
S-5	520D	STEEL/ALUM. DOUBLE DEFL. SUPPLY REGISTER	10" X 6"	12" X 8"	150-250	0.10"	23	SURFACE MT.	ADJUSTABLE	1
S-6	520D	STEEL/ALUM. DOUBLE DEFL. SUPPLY REGISTER	14" X 6"	16" X 8"	251-350	0.08"	23	SURFACE MT.	ADJUSTABLE	1
S-7	LV1	ALUMINUM LINEAR VANE SUPPLY	3.5" X 48"	4.5" X 50"	100	0.03	18	SURFACE MT.	1 WAY (ADJ.)	
R-1	530	STEEL RETURN GRILLE, 3/4" SPACING, 35 DEG VANES	8" X 8"	10" X 10"	0-170	0.05"	23	SURFACE MT.	-----	
R-2	530	STEEL RETURN GRILLE, 3/4" SPACING, 35 DEG VANES	12" X 12"	14" X 14"	171-440	0.05"	27	SURFACE MT.	-----	
R-3	530	STEEL RETURN GRILLE, 3/4" SPACING, 35 DEG VANES	22" X 22"	22" X 22"	551-940	0.02"	27	LAY-IN	-----	
R-4	530	STEEL RETURN GRILLE, 3/4" SPACING, 35 DEG VANES	46" X 22"	48" X 24"	1000-3000	0.02"	31	SURFACE MT.	-----	

NOTE 1. STEEL OR ALUMINUM AS INDICATED IN SPECIFICATIONS AND ON DRAWINGS.

FAN SCHEDULE														
TAG	SERVES	MANUFACTURER-MODEL	TYPE	DRIVE	CFM	SP (IN. WC.)	MAX RPM	MOTOR HP	DISC. SWITCH FURN BY	VOLTS/PH	MAX SONES	WEIGHT (LBS.)	DAMPER	NOTES
EF-1	STAFF TOILET	COOK-GC-168	CEILING FAN	DIRECT	100	0.7	1133	49w	DIV 26	115 / 1	4.0	12	BDD	



F5	DETAIL ~ RAINWATER PIPING	F9	DETAIL ~ ROOFTOP EXHAUST GOOSENECK
NOT TO SCALE		NOT TO SCALE	



A5	MECHANICAL ROOF PLAN
1/8" = 1'-0"	

160 Veranda Street  
 Portland, Maine 04103  
 T: 207.221.2260  
 F: 207.221.2266  
 Web: www.allied-eng.com

**Allied Engineering**  
 Structural Mechanical Electrical Commissioning

**GRANT HAYS ASSOCIATES**  
 ARCHITECTURE & INTERIOR DESIGN  
 P.O. BOX 6179 FALMOUTH MAINE 04103  
 207.871.9500 www.granthays.com

Date: -  
 Drawn By: REW  
 Checked By: HAG  
 Project Mgr: WPF  
 Project No: 15028  
 Card File: 15028M.DWG  
 Graphic Scale: 0 1'

**MECHANICAL ROOF PLAN DETAILS AND SCHEDULES**

**NFA NORTH EAST AIR**  
 PORTLAND INTERNATIONAL AIRPORT  
 1011 WESTBROOK STREET  
 PORTLAND, MAINE 04102  
 © copyright 2015 ALIB ENGINEERING, INC.

**MH-2**

90% PRICING SET ~ 14 DECEMBER 2015 ~ NOT FOR CONSTRUCTION

N:\Projects\2015\15028 - Northeast Air Terminal Building\05 Drawing Files\2015\15028M.dwg Dec 14, 2015 10:06am