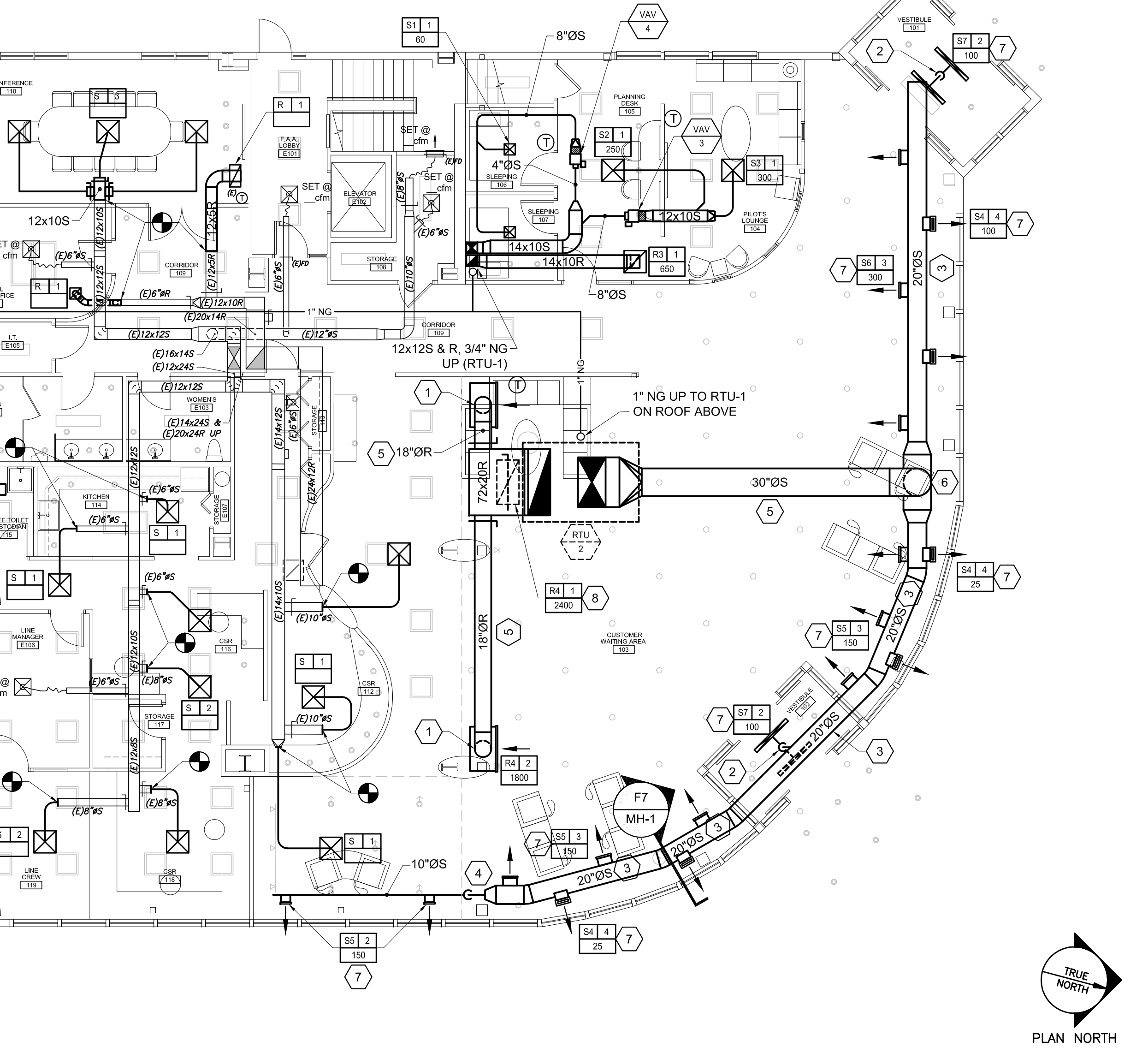


F7	DETAIL ~ SECTION AT EXTERIOR GLASS	F9	MECHANICAL PLAN ~ UPPER LEVEL OFFICES
NOT TO SCALE		1/8" = 1'-0"	

KEYED NOTES:

- 1) 18"Ø RETURN DROP TO WALL GRILLE. TOP OF GRILLE ELEVATION APPROXIMATELY 10'-0" A.F.F.
- 2) 9"Ø SUPPLY DROP TO VESTIBULE, 7"Ø SUPPLY TO EACH LINEAR GRILLE PLENUM.
- 3) 20"Ø SUPPLY DUCT RUN AT APPROXIMATELY 16'-0" A.F.F.
- 4) TRANSITION FROM 20"Ø TO 10"Ø SUPPLY AND DROP TO BELOW FIRST FLOOR CEILING.
- 5) DUCT MAINS TO BE RUN WITHIN STRUCTURE.
- 6) 30"Ø ELBOW AND DUCTWORK TO RTU-1 SHALL BE (GALVANEAL) PAINTED UNDER DIVISION 9. 30"Ø DROP AND ALL OTHER EXPOSED DUCTWORK SHALL BE ALUMINUM.
- 7) ALL SUPPLY GRILLES IN ALUMINUM DUCTWORK SHALL HAVE MILL ALUMINUM FINISH.
- 8) PROVIDE 8" DUCT DROP FROM RETURN MAIN TO ALLOW FOR VOLUME DAMPER INSTALLATION.
- 9) CONNECT TO EXISTING NATURAL GAS SERVICE. CONTACT UTILITY TO CONFIRM WHETHER INSTALLED REGULATOR HAS THE BTU CAPACITY FOR ADDED DEMAND; MAY REQUIRE REPLACING THE EXISTING REGULATOR. PIPING IS SIZED AT 2psi BUILDING PRESSURE WITH 1psi DROP.
- 10) PAINT TO MATCH THE COLOR OF EXISTING EXTERIOR PIPING.



160 Veranda Street
 Portland, Maine 04103
 T: 207.221.2260
 F: 207.221.2266
 Web: www.allied-eng.com

Allied Engineering
 Structural Mechanical Electrical Commissioning

GRANT HAYS ASSOCIATES
 ARCHITECTURE & INTERIOR DESIGN
 P.O. BOX 6179 FALMOUTH MAINE 04103
 207.871.9500 www.granthays.com

Date:	REV
Drawn By:	HAG
Checked By:	WPF
Project Mgr:	WPF
Project No.:	15028
Card File:	15028M.DWG
Graphic Scale:	0 1'

MECHANICAL PLANS

NEA
 NORTH EAST AIR
 PORTLAND INTERNATIONAL JETPORT
 1011 WESTBROOK STREET
 PORTLAND, MAINE 04102
 © COPYRIGHT 2015 ALLIED ENGINEERING, INC.

MH-1

N:\Projects\2015\15028 - Northeast Air Terminal Building\05 Drawing Files\2015\15028M.dwg Dec 14, 2015 1:08pm
 90% PRICING SET ~ 14 DECEMBER 2015 ~ NOT FOR CONSTRUCTION