

PANEL SCHEDULE ~ P21							
VOLTAGE: 208/120V			MLC:			AIC:	
3-PHASE, 4-WIRE							
CIRCUIT BREAKER			CIRCUIT LOAD (KVA) CONNECTED			BRANCH CIRCUIT DESCRIPTION	
CKT NO	BRKR SIZE	NO OF POLES	PH	A	B	C	
1	20	1	A	0.00			SPARE
3	20	1	B		0.00		SPARE
5	20	1	C			0.00	SPARE
7	20	1	A	0.00			SPARE
9	20	1	B		0.00		SPARE
11	20	1	C			0.00	SPARE
13	20	1	A	0.00			SPARE
15	20	1	B		0.00		SPARE
17	20	1	C			0.00	SPARE
19	20	1	A	0.00			SPARE
21	20	1	B		0.00		SPARE
23	20	1	C			0.00	SPARE
25	20	1	A	0.00			SPARE
27	20	1	B		0.00		SPARE
29	20	1	C			0.00	SPARE
31	20	1	A	0.00			SPARE
33	20	1	B		0.00		SPARE
35	20	1	C			0.00	SPARE
37	20	1	A	0.00			SPARE
39	20	1	B		0.00		SPARE
41	20	1	C			0.00	SPARE
43	20	1	A	0.00			SPARE
45	20	1	B		0.00		SPARE
47	20	1	C			0.00	SPARE
49	20	1	A	0.00			SPARE
51	20	1	B		0.00		SPARE
53	20	1	C			0.00	SPARE
55	20	1	A	0.00			SPARE
57	20	1	B		0.00		SPARE
59	20	1	C			0.00	SPARE
61	20	1	A	0.00			SPARE
63	20	1	B		0.00		SPARE
65	20	1	C			0.00	SPARE
67	20	1	A	0.00			SPARE
69	20	1	B		0.00		SPARE
71	20	1	C			0.00	SPARE
SUBTOTAL				0.00	0.00	0.00	

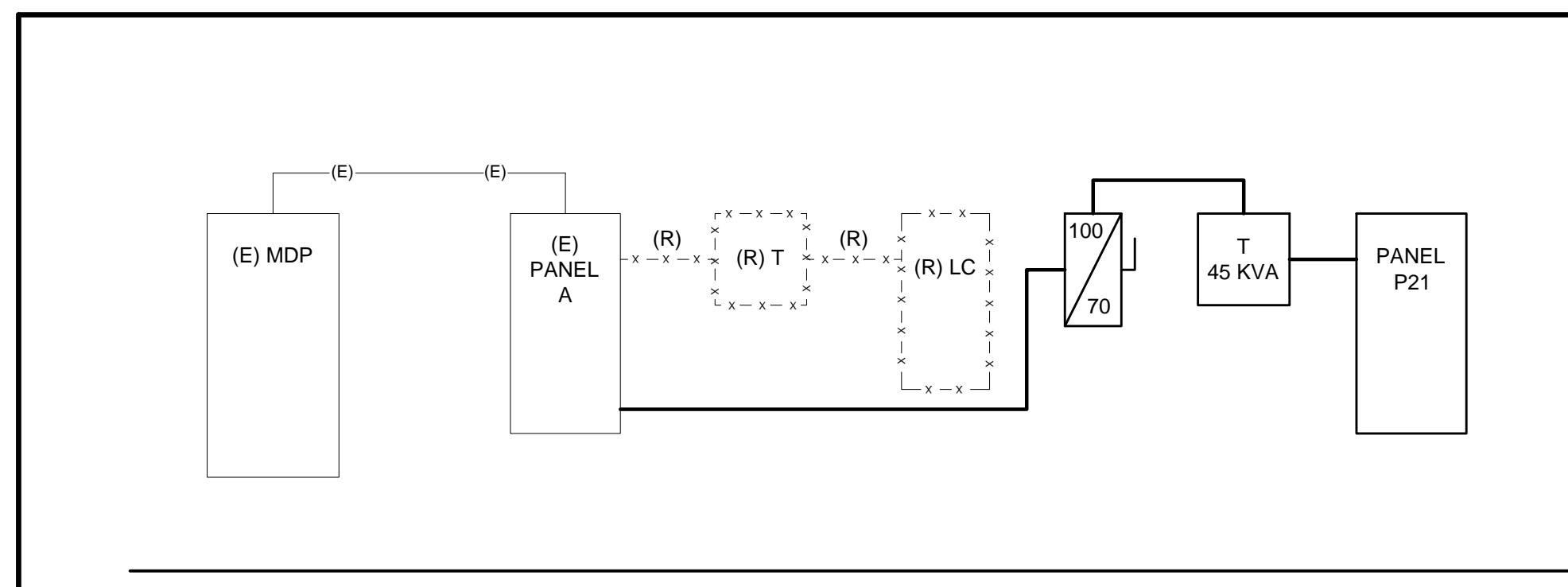
2	20	1	A	0.00			SPARE
4	20	1	B		0.00		SPARE
6	20	1	C			0.00	SPARE
8	20	1	A	0.00			SPARE
10	20	1	B		0.00		SPARE
12	20	1	C			0.00	SPARE
14	20	1	A	0.00			SPARE
16	20	1	B		0.00		SPARE
18	20	1	C			0.00	SPARE
20	20	1	A	0.00			SPARE
22	20	1	B		0.00		SPARE
24	20	1	C			0.00	SPARE
26	20	1	A	0.00			SPARE
28	20	1	B		0.00		SPARE
30	20	1	C			0.00	SPARE
32	20	1	A	0.00			SPARE
34	20	1	B		0.00		SPARE
36	20	1	C			0.00	SPARE
38	20	1	A	0.00			SPARE
40	20	1	B		0.00		SPARE
42	20	1	C			0.00	SPARE
44	20	1	A	0.00			SPARE
46	20	1	B		0.00		SPARE
48	20	1	C			0.00	SPARE
50	20	1	A	0.00			SPARE
52	20	1	B		0.00		SPARE
54	20	1	C			0.00	SPARE
56	20	1	A	0.00			SPARE
58	20	1	B		0.00		SPARE
60	20	1	C			0.00	SPARE
62	20	1	A	0.00			SPARE
64	20	1	B		0.00		SPARE
66	20	1	C			0.00	SPARE
68	20	1	A	0.00			SPARE
70	20	1	B		0.00		SPARE
72	20	1	C			0.00	SPARE
SUBTOTAL				0.00	0.00	0.00	

LUMINAIRE SCHEDULE								
TYPE	DESCRIPTION	MFR	CATALOG SERIES NUMBER SEE NOTE 1	MOUNTING	VOLTS	WATTS		KEY NOTES
							TYPE	
A	2-1/2" LED DOWNLIGHT	FOCAL POINT	FLS2-RO-LL2-L11-T-BH/ LS2-RD-DN-FL-CD-WH	RECESSED	277		LED ARRAY 3500K	
B	4-1/2" LED DOWNLIGHT	FOCAL POINT	FLC4D-RO-1500L-L11-T-BH/ LC4-RD-1500L-DN-CD-WP	RECESSED	277		LED ARRAY 3500K	
C	2x2 HIGH PERFORMANCE RECESSED LED	FINELITE	HPR-LED-A-2x2-DCO-SO-SC-C1	RECESSED	277		LED ARRAY 3500K	
D	2x4 LED HIGH PERFORMANCE RECESSED	FINELITE	HPR-LED-A-2x4-DCO-SO-SC-C1	RECESSED	277		LED ARRAY 3500K	
E	1x4 LED HIGH PERFORMANCE RECESSED	FINELITE	HPR-LED-A-1x4-DCO-SO-SC-C1	RECESSED	277		LED ARRAY 3500K	
E1	1x4 LED HIGH PERFORMANCE RECESSED	FINELITE	HPR-LED-A-1x4-DCO-SO-SC-SM	RECESSED	277		LED ARRAY 3500K	
E2	1x2 LED HIGH PERFORMANCE RECESSED	FINELITE	HPR-LED-A-1x2-DCO-SO-SC-C1	RECESSED	277		LED ARRAY 3500K	
F	8' LINEAR DIRECT/INDIRECT PENDANT	FINELITE	HP-2-ID-6'-SO-HO-TG-FA-SC-C1	PENDANT	277		LED ARRAY 3500K	
G	4-1/2" DIA LED PENDANT	WAC	PD-W2605-WT	PENDANT	120	16	LED ARRAY 3000K	
G1	24-LIGHT "GRAPES" PENDANT	SONNEMAN	2918-01-AST 24 LT	PENDANT	277	100	LED	
G2	9-LIGHT "GRAPES" PENDANT	SONNEMAN	2916-01-AST 9 LT	PENDANT	277	37.5	LED	
H	CONTINUOUS LED RIBBON UNDERCABINET LIGHT	WAC	LED-T24-35-LENGTH TBD	SURFACE	120			
I	LED MULTI-COLORED ACCENT STRIP	Q-TRAN	IQ20-MW-301-90-6.0-LENGTH TBD/IQA-VEGA-LENGTH TBD EXTRUSION/QTM-ELED-100-UNV/24 +DMX DRIVER WITH INTEGRAL DMX INTERFACE	SURFACE	120			
J	TRACK WITH PALOMA ADJUSTABLE BEAM HEADS	WAC	WHT-4-BK TRACK/WHEDL-BK POWER FEED/WHK-LED523-35-BK	SURFACE	277			
J1	LED ACCENT STRIP			RECESSED	120			
K	CORSO SCONCE, 1440 LUMENS	SONNEMAN	1725.16	WALL 78" AFF	277	21		
L	LINEAR LED COVE LIGHT				277			
	EXIT LIGHT							3

- NOTES**
- NOTE THAT THESE NUMBERS ARE NOT COMPLETE CATALOG #'S. PROVIDE ALL REQUIREMENTS ON SCHEDULE, NOTES, SPECS, AND DRAWINGS COMBINED.
 - CATALOG SERIES NUMBERS ARE USED TO ESTABLISH A LEVEL OF QUALITY AND NOT INTENDED TO LIMIT COMPETITION. SERIES NUMBERS ARE NOT COMPLETE CATALOG NUMBERS. COMPLY WITH ADDITIONAL REQUIREMENTS IN SPECIFICATIONS AND DRAWINGS.
 - PROVIDE WALL, CEILING, OR PENDANT MOUNTING AS INDICATED ON PLANS. PROVIDE NUMBER OF FACES AND ARROWS AS INDICATED.
 - PROVIDE PROGRAMMED START BALLAST WITH ROOMS THAT HAVE OCCUPANCY SENSORS.
 - VERIFY CEILING STRUCTURE AND MOUNTING HEIGHT PRIOR TO ORDERING ANY LIGHT FIXTURES.

ELECTRICAL SCHEDULE OF MECHANICAL EQUIPMENT																	
TAG	DESCRIPTION	VOLTS	PH	LOAD	MCA	MOPD	DISCONNECT SWITCH				STARTER (NEMA)			PANEL	WIRING IN CONDUIT	NOTES	
							FRAME	POLES	FUSE	NEMA ENCL	FBD	SIZE/ VFD	FBD				CBD
RTU-1	ROOFTOP UNIT	480	3				-	-	-	-							
RTU-2	ROOFTOP UNIT	480	3				-	-	-	-							2

- NOTES:**
- LEAD/LAG
 - DUCT SMOKE DETECTORS FURNISHED BY DIVISION 26, INSTALLED BY DIVISION 23, WIRED TO FIRE ALARM BY DIVISION 26.
 - POWER TO CU BY DIVISION 26, WIRING BETWEEN AC AND CU PROVIDED BY DIVISION 23
 - WIRE AND CONNECT MOTORIZED DAMPER AT EXHAUST FAN. CONNECT DAMPER TO SAME BRANCH CIRCUIT THAT SUPPLIES FAN.
 - UNIT IS CONSISTS OF MULTIPLE MOTORS FACTORY WIRED FOR SINGLE-POINT POWER CONNECTION.
 - CORD AND PLUG FURNISHED WITH EQUIPMENT
- ABBREVIATIONS:**
- | | |
|------|----------------------------|
| FWE | FURNISHED WITH EQUIPMENT |
| NF | NOT FUSED |
| SWBD | SWITCHBOARD |
| FBD | FURNISHED BY DIVISION |
| CBD | CONTROL WIRING BY DIVISION |



160 Veranda Street
Portland, Maine 04103
T: 207.221.2260
F: 207.221.2266
Web: www.allied-eng.com

Allied Engineering
Structural Mechanical Electrical Commissioning

GRANT HAYS ASSOCIATES
ARCHITECTURE & INTERIOR DESIGN
P.O. BOX 6199 PORTLAND, MAINE 04103
207.871.3900 gha@granthays.com

Date: -
Drawn By: DLL
Checked By: SRM
Project Mgr: WPF
Project No: 15028
Cad File: 15028_E.DWG
Graphic Scale: 1" = 1'

NEA
NORTH EAST AIR
PORTLAND INTERNATIONAL AIRPORT
1011 WESTBROOK STREET
PORTLAND, MAINE 04102
© Copyright 2012 Allen Doremus, Inc.

EP-2

N:\Projects\2015\15028 - Northeast Air Terminal Building\00 Drawing Files\201515028_E.rwg Dec 14, 2015 - 10:05am

90% PRICING SET ~ 14 DECEMBER 2015 ~ NOT FOR CONSTRUCTION