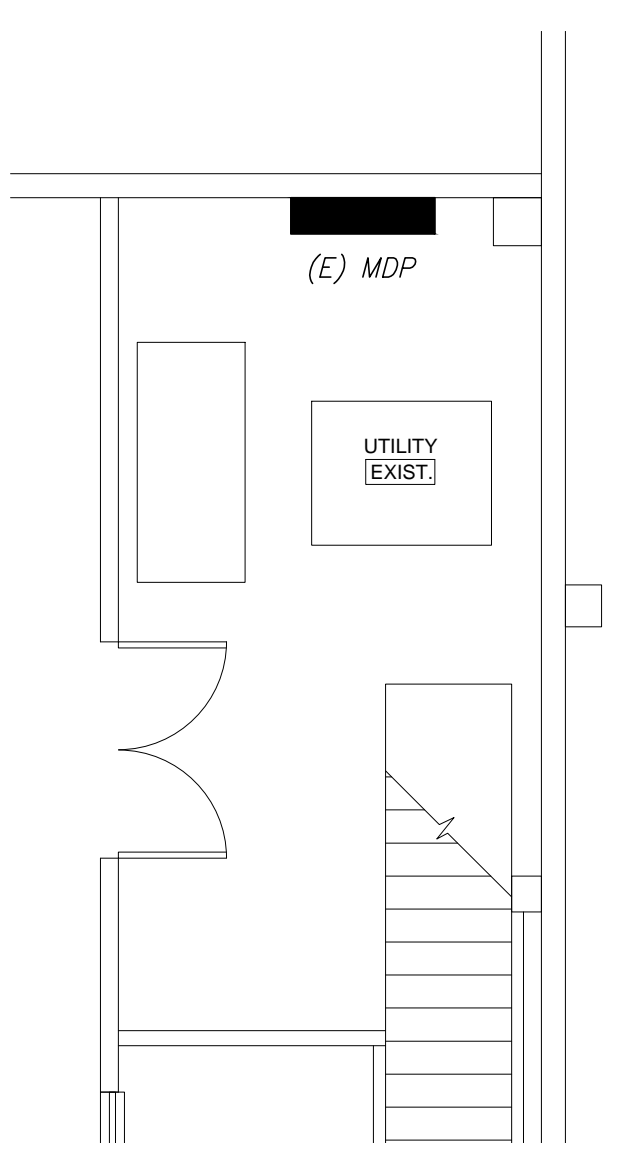
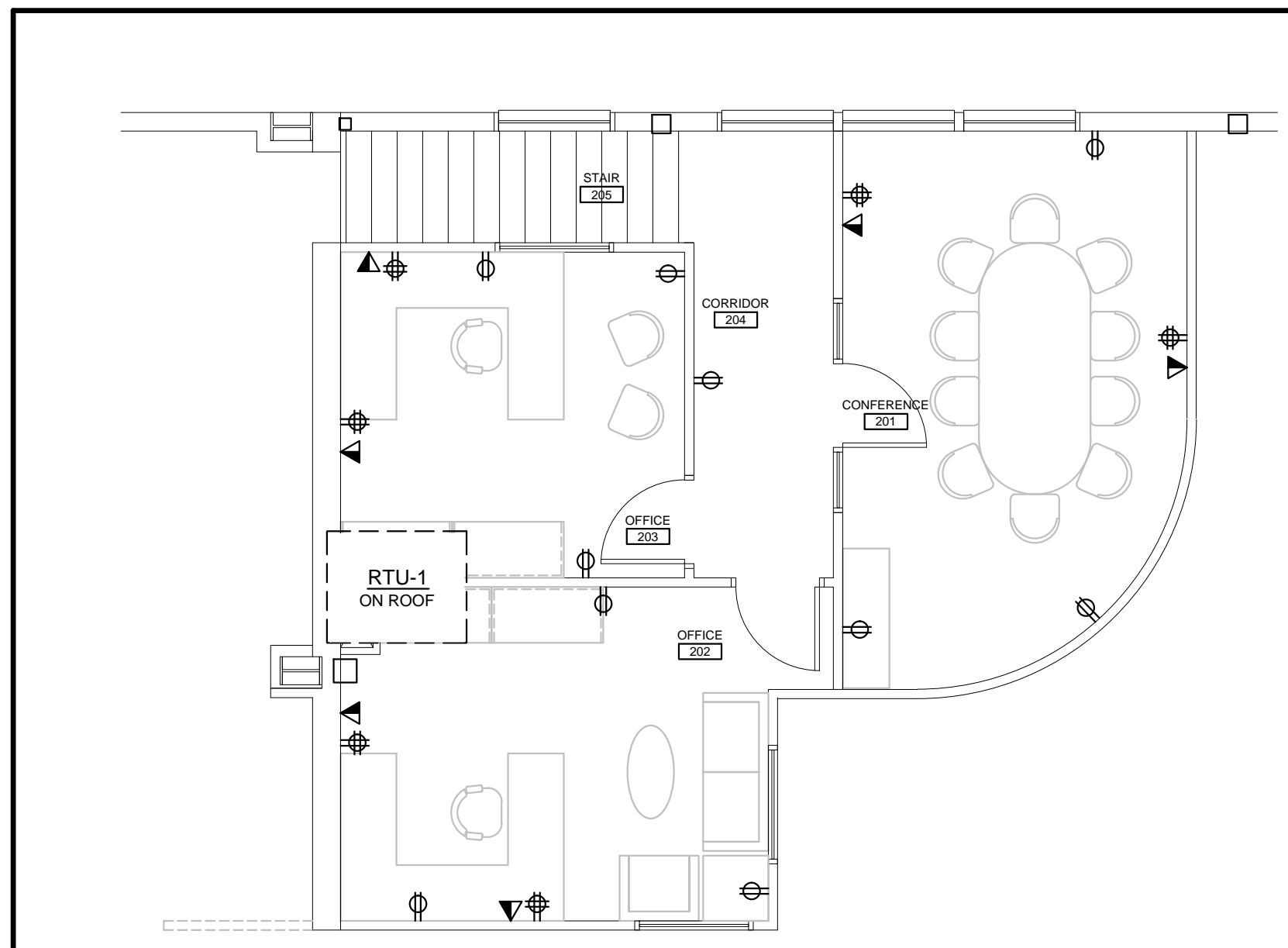


E9	(E) MECH/ELECTRIC ROOM
3/16"=1'-0"	REFER TO EL-1 FOR LOCATION



Allied Engineering
Structural Mechanical Electrical Commissioning
160 Veranda Street
Portland, Maine 04103
T: 207.221.2260
F: 207.221.2266
Web: www.allied-eng.com

GRANT HAYS ASSOCIATES
ARCHITECTURE & INTERIOR DESIGN
P.O. BOX 6199 PORTLAND, MAINE 04105
207.871.5900 www.granthays.com

Date: -
Drawn By: DLL
Checked By: SRM
Project Mgr: WPF
Project No: 15028
Cad File: 1502E.E.DWG
Graphic Scale: 0 1"

NEA NORTH EAST AIR
PORTLAND INTERNATIONAL AIRPORT
1011 WESTBROOK STREET
PORTLAND, MAINE 04102
© December 2015. All rights reserved.

ELECTRICAL POWER AND SYSTEMS PLAN

90% PRICING SET ~ 14 DECEMBER 2015 ~ NOT FOR CONSTRUCTION

N:\Projects\2015\15028 - Northeast Air Terminal Building\00 Drawing Files\201515028_E.rwg Dec 14, 2015 - 10:36am

A1	ELECTRICAL POWER AND SYSTEMS PLAN	A8	SECOND FLOOR
3/16" = 1'-0"		3/16" = 1'-0"	

EP-1