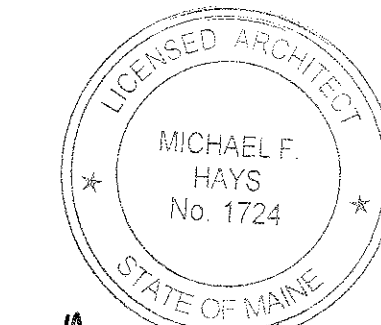


JCAL



Michael F. Hays  
REV: 1/01/17

DRAWING NAME

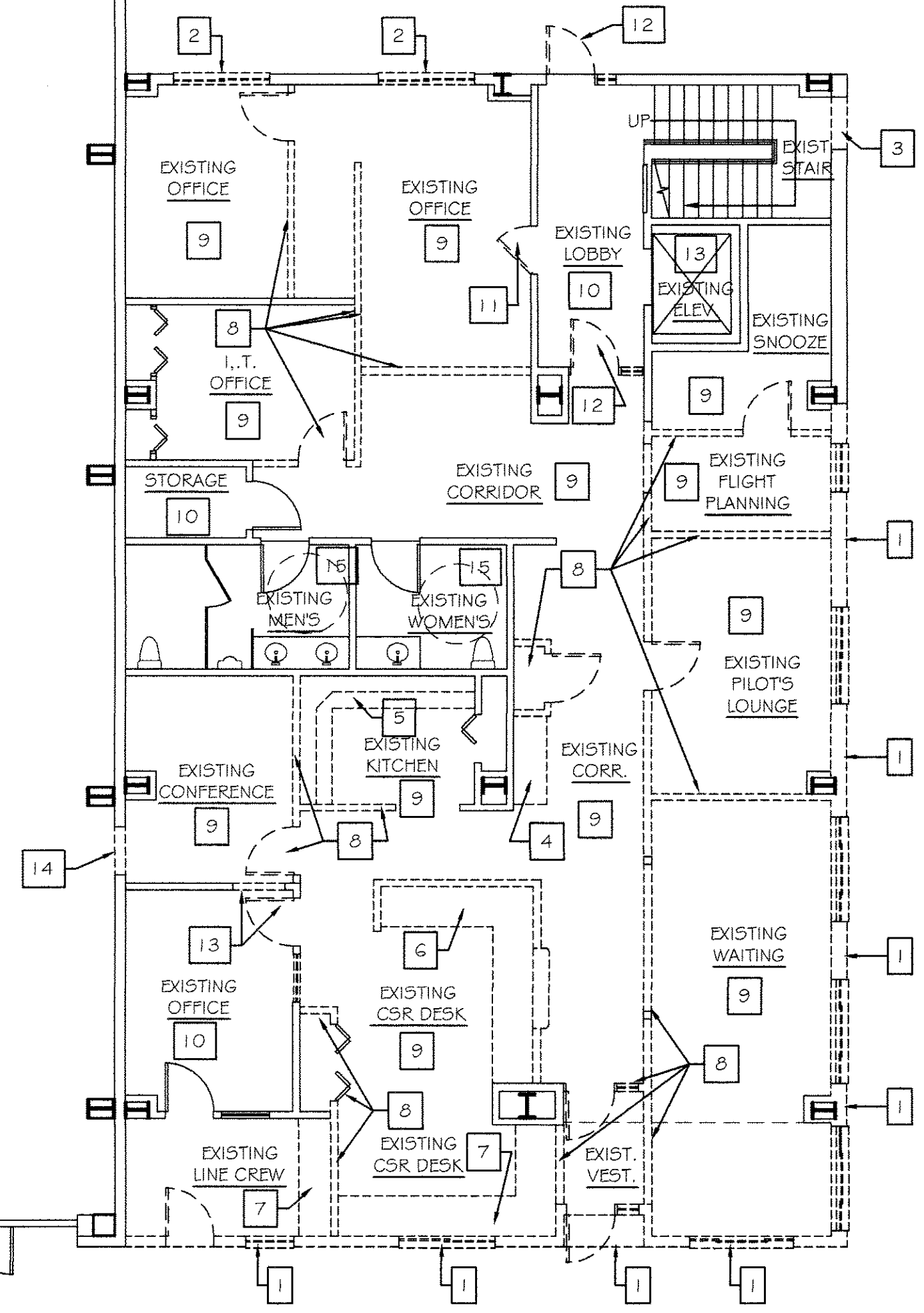
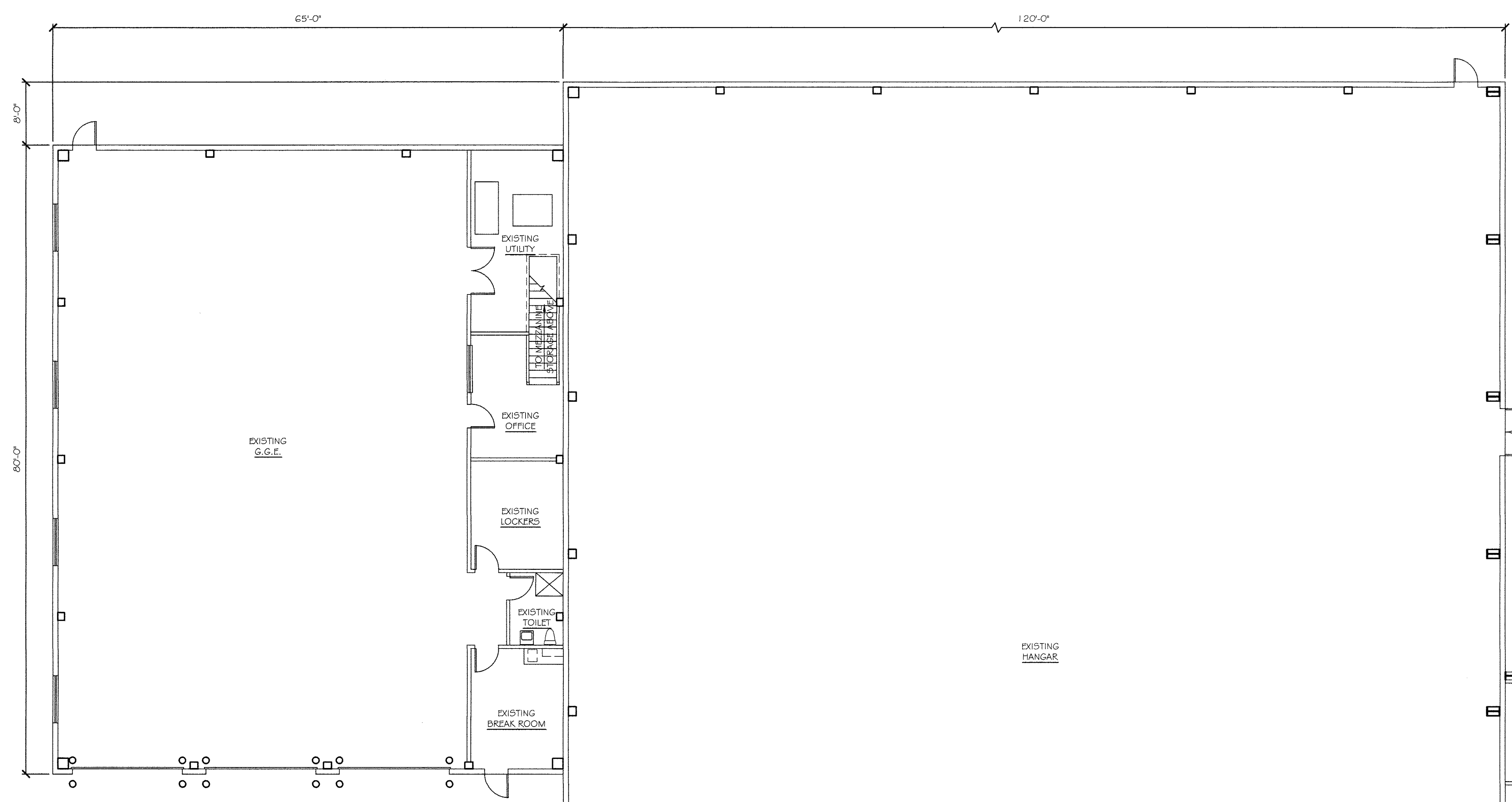
**NEA**  
NORTH EAST AIR  
PORTLAND INTERNATIONAL AIRPORT  
1011 WESTBROOK TRILET  
PORTLAND, MAINE 04102

JHECT

**DEMOLITION  
FLOOR  
PLAN**

DATE: 14 DEC '15  
SCALE: 1/8"=1'-0"  
DRAWN: MFH/mgk  
JOB NO.: 150655

JHECT  
**AD1**  
COPYRIGHT  
REPRODUCTION OR REV. OF THIS  
DOCUMENT WITHOUT WRITTEN  
PERMISSION FROM GRANT HAYS  
ASSOCIATES IS PROHIBITED.



DEMOLITION LEGEND	
GENERAL: REFER TO SITE, STRUCTURAL, MECHANICAL, PLUMBING, AND ELECTRICAL DRAWINGS FOR ADDITIONAL DEMOLITION REQUIREMENTS.	
1	REMOVE EXTERIOR WALLS, INCLUDING WINDOWS, DOORS, FRAMING, FINISHES, AND STEEL GIRTS. SALVAGE WALL PANELS FOR REPLACEMENT WORK - SEE ELEVATIONS.
2	REMOVE EXISTING WINDOW AND TRIM. PREPARE OPENING FOR NEW WINDOW. PATCH INTERIOR FINISHES TO MATCH ADJACENT EXISTING FINISHES.
3	REMOVE EXISTING WALL FOR NEW STAIR FLIGHT.
4	REMOVE EXISTING DISPLAY UNIT. SALVAGE FOR OWNER. RELOCATE TO ON-SITE STORAGE AREA PER OWNER.
5	REMOVE AND SALVAGE SELECTED KITCHEN CABINETS FOR REINSTALLATION. REMOVE EXISTING COUNTERTOP. REFER TO FLOOR PLAN FOR REINSTALLED CABINET LAYOUT.
6	REMOVE EXISTING CSR CASEWORK IN ITS ENTIRETY. REMOVE DROPPED SOFFIT ABOVE IN ITS ENTIRETY.
7	REMOVE EXISTING WORK SURFACE COUNTERS.
8	REMOVE EXISTING WALLS, TRIM, BASE, DOORS, AND FRAMES.
9	REMOVE EXISTING FLOORING, WALL BASE, SUSPENDED CEILING SYSTEM, LIGHTING, AND HVAC DIFFUSERS. PATCH SURFACES TO REMAIN TO MATCH ADJACENT FINISHES.
10	REMOVE EXISTING LIGHTING AND SUSPENDED CEILING TILE. SUSPENDED CEILING GRID AND HVAC DIFFUSERS TO REMAIN.
11	REMOVE DOOR & FRAME. PREP OPENING FOR NEW INFILL WALL.
12	REMOVE STOREFRONT DOOR, FRAME & SIDELIGHT. PREP OPENING FOR NEW STOREFRONT DOOR, FRAME & SIDELIGHT.
13	REMOVE EXISTING DOOR & FRAME. SALVAGE FOR NEW LOCATION AT REMOVED WALL AT SAME OFFICE.
14	REMOVE EXISTING WALL FOR NEW DOOR. SEE STRUCTURAL DRAWINGS FOR BRACING MODIFICATION.
15	REMOVE EXISTING LIGHT FIXTURES FOR NEW FIXTURES.

**DEMOLITION FIRST FLOOR PLAN**  
SCALE: 1/8" = 1'-0"



NOTE: SEE SHEET AD-2 DEMO ELEVATIONS FOR EXTERIOR WALL PANEL REPLACEMENT LOCATIONS.

PARTITION LEGEND	
	EXISTING
	REMOVE