

GRANT HAYS ASSOCIATES

ARCHITECTURE & INTERIOR DESIGN
P.O. BOX 6179 FALMOUTH MAINE 04105
207.871.5900 www.granthays.com

JCAL
LICENSED ARCHITECT
MICHAEL F. HAYS
No. 1724
STATE OF MAINE
Michael F. Hays
REV/NO/17

DRAWING NAME

NEA
NORTHEAST AIR
PORTLAND INTERNATIONAL AIRPORT
1011 W. BROOK STREET
PORTLAND, MAINE 04102

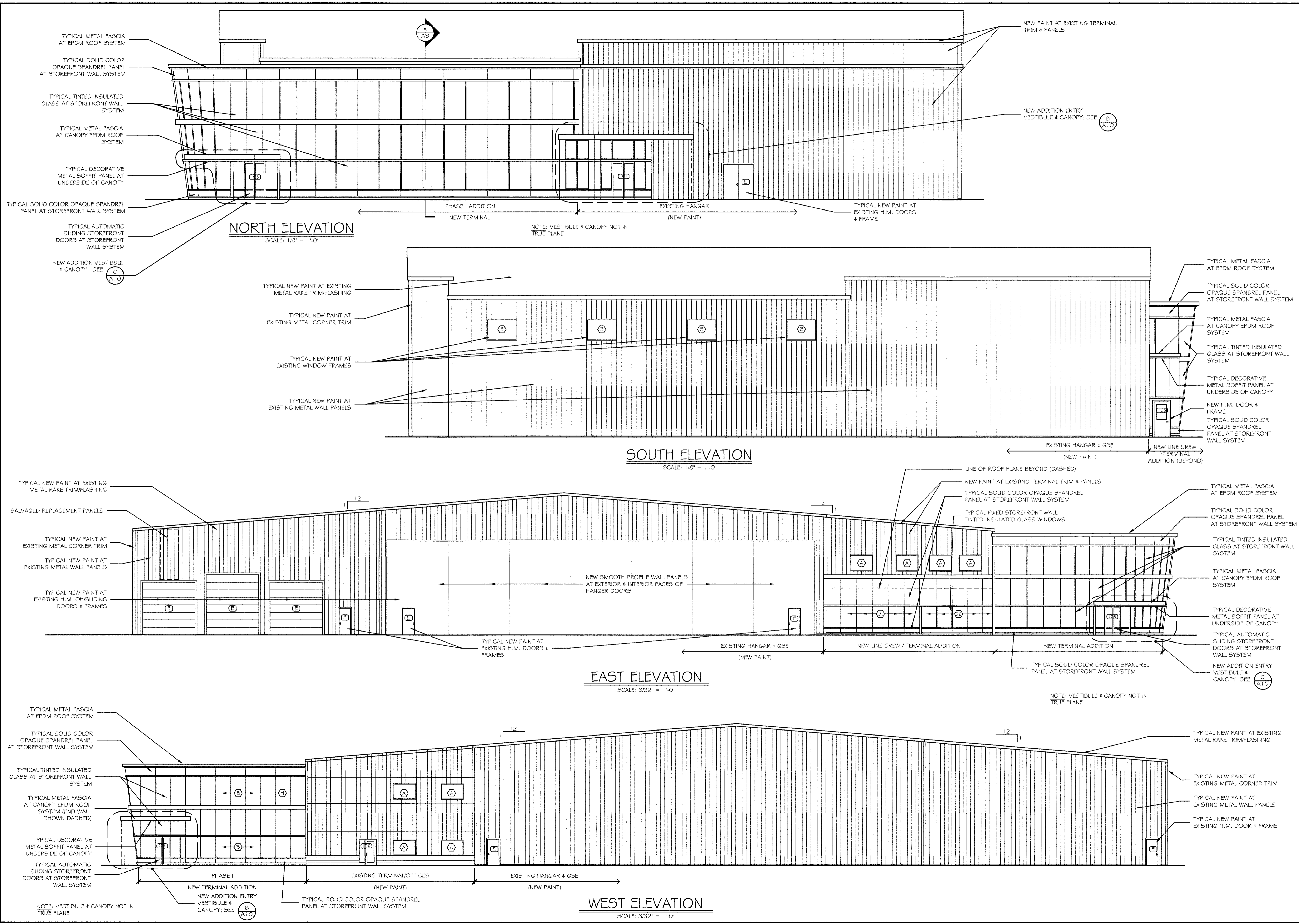
JHELT

PHASE I
EXTERIOR ELEVATIONS

DATE: 14 DEC '15
SCALE: A/NOTED
DRAWN: MFH/mgk
JOB NO.: 150655
JHELT

A7

COPYRIGHT REPRODUCTION OR REVUE OF THIS DOCUMENT WITHOUT WRITTEN PERMISSION FROM GRANT HAYS ASSOCIATES IS PROHIBITED.



- TYPICAL METAL FASCIA AT EPDM ROOF SYSTEM
- TYPICAL SOLID COLOR OPAQUE SPANDREL PANEL AT STOREFRONT WALL SYSTEM
- TYPICAL TINTED INSULATED GLASS AT STOREFRONT WALL SYSTEM
- TYPICAL METAL FASCIA AT CANOPY EPDM ROOF SYSTEM
- TYPICAL DECORATIVE METAL SOFFIT PANEL AT UNDERSIDE OF CANOPY
- TYPICAL SOLID COLOR OPAQUE SPANDREL PANEL AT STOREFRONT WALL SYSTEM
- TYPICAL AUTOMATIC SLIDING STOREFRONT DOORS AT STOREFRONT WALL SYSTEM
- NEW ADDITION VESTIBULE & CANOPY - SEE (C ATO)

NORTH ELEVATION
SCALE: 1/8" = 1'-0"

NOTE: VESTIBULE & CANOPY NOT IN TRUE PLANE

- TYPICAL NEW PAINT AT EXISTING METAL RAKE TRIM/FLASHING
- TYPICAL NEW PAINT AT EXISTING METAL CORNER TRIM
- TYPICAL NEW PAINT AT EXISTING WINDOW FRAMES
- TYPICAL NEW PAINT AT EXISTING METAL WALL PANELS

SOUTH ELEVATION
SCALE: 1/8" = 1'-0"

- TYPICAL NEW PAINT AT EXISTING METAL RAKE TRIM/FLASHING
- SALVAGED REPLACEMENT PANELS
- TYPICAL NEW PAINT AT EXISTING METAL CORNER TRIM
- TYPICAL NEW PAINT AT EXISTING METAL WALL PANELS
- TYPICAL NEW PAINT AT EXISTING H.M. OHSIDING DOORS & FRAMES

EAST ELEVATION
SCALE: 3/32" = 1'-0"

- LINE OF ROOF PLANE BEYOND (DASHED)
- NEW PAINT AT EXISTING TERMINAL TRIM & PANELS
- TYPICAL SOLID COLOR OPAQUE SPANDREL PANEL AT STOREFRONT WALL SYSTEM
- TYPICAL FIXED STOREFRONT WALL TINTED INSULATED GLASS WINDOWS

- TYPICAL METAL FASCIA AT EPDM ROOF SYSTEM
- TYPICAL SOLID COLOR OPAQUE SPANDREL PANEL AT STOREFRONT WALL SYSTEM
- TYPICAL TINTED INSULATED GLASS AT STOREFRONT WALL SYSTEM
- TYPICAL METAL FASCIA AT CANOPY EPDM ROOF SYSTEM (END WALL SHOWN DASHED)
- TYPICAL DECORATIVE METAL SOFFIT PANEL AT UNDERSIDE OF CANOPY
- TYPICAL AUTOMATIC SLIDING STOREFRONT DOORS AT STOREFRONT WALL SYSTEM

WEST ELEVATION
SCALE: 3/32" = 1'-0"

- TYPICAL NEW PAINT AT EXISTING METAL RAKE TRIM/FLASHING
- TYPICAL NEW PAINT AT EXISTING METAL CORNER TRIM
- TYPICAL NEW PAINT AT EXISTING METAL WALL PANELS
- TYPICAL NEW PAINT AT EXISTING H.M. DOOR & FRAME