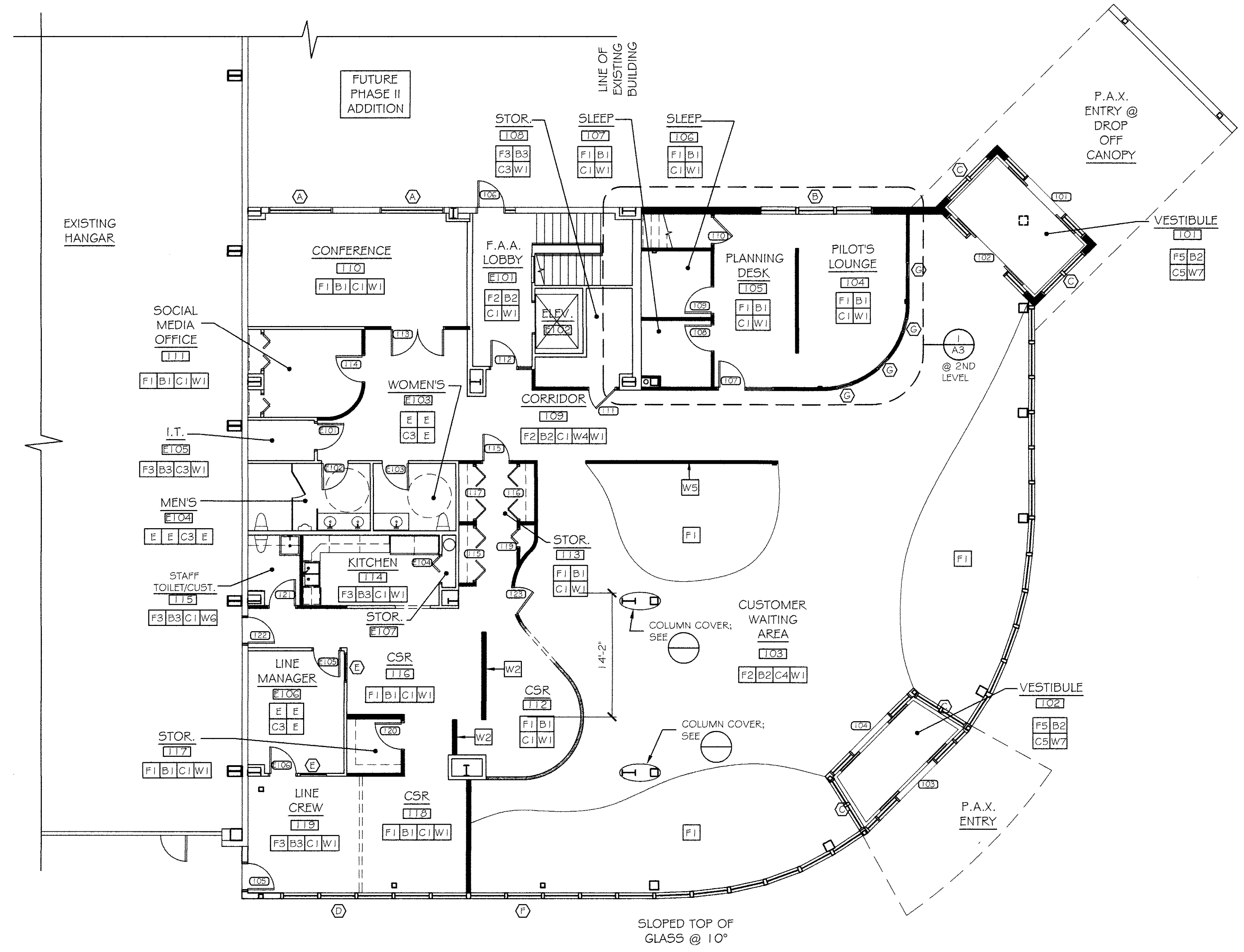
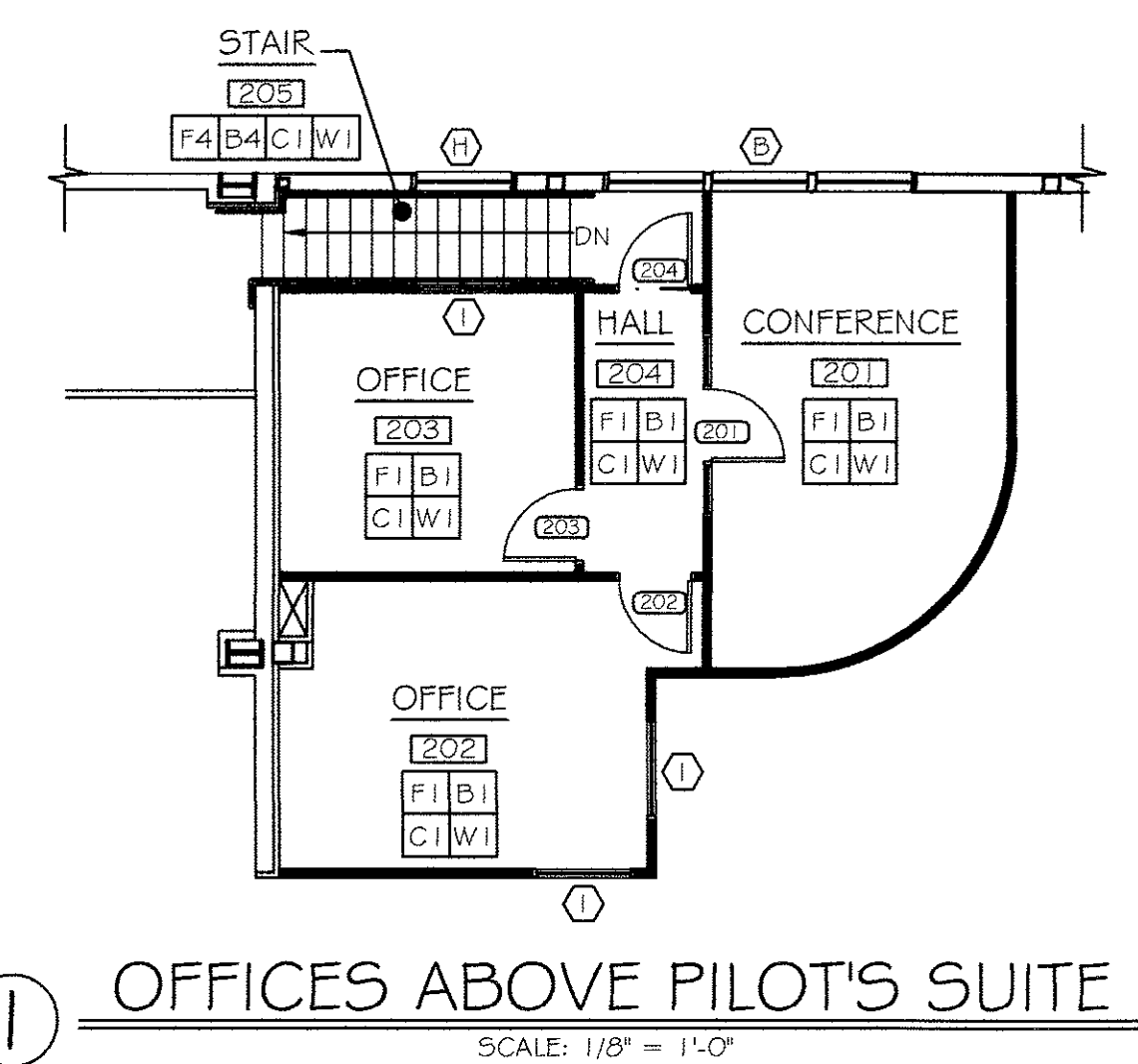


# FINISHES LEGEND

| TAG | FLOORS (F)   | TAG | WALL BASE (B)  |
|-----|--|-----|--|
| F1  | CARPET TILE<br>MFGR:<br>MODEL:<br>SIZE:<br>WEIGHT:<br>BACKING:<br>COLOR:   | B1  | RESILIENT - MILLWORK PROFILE<br>MFGR:<br>MODEL:<br>SIZE:<br>THICKNESS:<br>COLOR:                       |
| F2  | PORCELAIN TILE<br>MFGR:<br>MODEL:<br>SIZE:<br>THICKNESS:<br>COLOR:<br>GROUT MFGR/COLOR:  | B2  | PORCELAIN TILE<br>MFGR:<br>MODEL:<br>SIZE:<br>THICKNESS:<br>COLOR:<br>GROUT MFGR/COLOR:                |
| F3  | VINYL COMPOSITION TILE<br>MFGR:<br>MODEL:<br>SIZE:<br>THICKNESS:<br>COLOR:   | B3  | RESILIENT - TRADITIONAL<br>MFGR:<br>MODEL:<br>SIZE:<br>THICKNESS:<br>PROFILE:<br>COLOR:                |
| F4  | STAIR TREADS/RISERS - RUBBER<br>MFGR:<br>MODEL:<br>SIZE:<br>THICKNESS:<br>COLOR:   | B4  | RESILIENT - STAIR ACCY<br>MFGR:<br>MODEL:<br>SIZE:<br>THICKNESS:<br>PROFILE:<br>COLOR:                 |
| F5  | RECESSED ENTRY SYSTEM<br>MFGR:<br>WEAR SURFACE:<br>COLOR:<br>SIZE:<br>DEPTH:   | B5  |  |
| F6  |  | B6  |  |
| F7  |  | B7  |  |
| F8  |  | B8  |  |
| TAG | CEILINGS (C)   | TAG | WALLS (W)  |
| C1  | SUSPENDED ACOUSTICAL CEILING TILE<br>MFGR:<br>MODEL:<br>SIZE:<br>COLOR:<br><br>SUSPENDED ACOUSTICAL CEILING GRID<br>MFGR:<br>MODEL:<br>PROFILE:<br>COLOR:<br>WEIGHT: | W1  | PAINT<br>MFGR:<br>TYPE:<br>COLOR: SEE PAINT SCHEDULE   |
| C2  | GYPSUM WALL BOARD<br>THICKNESS:<br>FINISH: PRIMER + 2 COATS PAINT<br>(SEE PAINT SCHEDULE / PLAN)   | W2  | 3-FORM<br>MFGR:<br>STYLE:<br>SHEET SIZE:<br>THICKNESS:<br>FINISH:<br>COLOR:<br>LAYERS:<br>ORIENTATION: |
| C3  | SUSPENDED ACOUSTICAL CEILING TILE<br>MFGR:<br>MODEL:<br>SIZE:<br>COLOR:<br>(EXISTING GRID)   | W3  | 3-FORM<br>MFGR:<br>STYLE:<br>SHEET SIZE:<br>THICKNESS:<br>FINISH:<br>COLOR:<br>LAYERS:<br>ORIENTATION: |
| C4  | DRY-FALL PAINT AT STRUCTURE<br>MFGR:<br>MODEL:<br>COLOR:<br>FINISH:  | W4  | PORCELAIN TILE (42" A.F.F.)<br>MFGR:<br>MODEL:<br>SIZE:<br>THICKNESS:<br>COLOR:<br>GROUT MFGR/COLOR:   |
| C5  | ALUMINUM LINEAR CEILING SYSTEM<br>MFGR:<br>MODEL:<br>PROFILE:<br>COLOR/FINISH:   | W5  | WALL COVERING:<br>MFGR:<br>PRODUCT:<br>WEIGHT:<br>WIDTH:<br>COLOR:                                     |
| C6  |  | W6  | FRP: (48" A.F.F. w/ W1 ABOVE)<br>MFGR:<br>PRODUCT:<br>FINISH:<br>COLOR:                                |
|     |  | W7  | ALUMINUM PANNING/PANELS:<br>(SAME AS STOREFRONT SYSTEM)  |

### TAG LEGEND

|   |   |   |   |
|---|---|---|---|
| F | B | C | W |
| F | B |   |   |
| C | W |   |   |



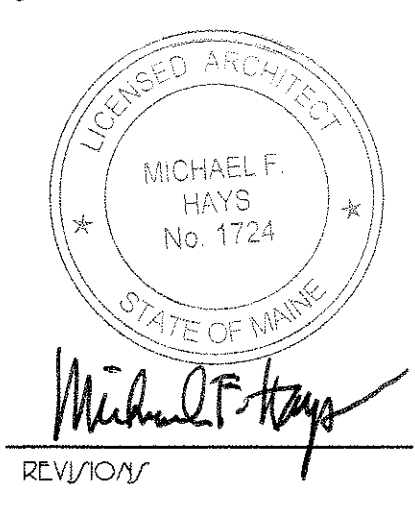
**FINISHES PLAN**  
SCALE: 1/8" = 1'-0"



### PARTITION LEGEND

|  |          |
|--|----------|
|  | EXISTING |
|  | PHASE I  |

**GRANT HAYS ASSOCIATES**  
ARCHITECTURE & INTERIOR DESIGN  
P.O. BOX 6179 FALMOUTH MAINE 04105  
207.871.5900 www.granthays.com



DRAWING NAME

**NEA**  
NORTH EAST AIR  
PORTLAND INTERNATIONAL AIRPORT

1011 W. BROOK STREET  
PORTLAND, MAINE 04102

**PHASE I FINISHES PLAN**

DATE: 14 DEC '15  
SCALE: 1/8" = 1'-0"  
DRAWN: BGH/mgk  
JOB NO: 150655  
SHEET: **A3**

COPYRIGHT REPRODUCTION OR REVUE OF THIS DOCUMENT WITHOUT WRITTEN PERMISSION FROM GRANT HAYS ASSOCIATES IS PROHIBITED.