

Michael F. Hays  
REV/10/17

DRAWING NAME

**NEA**  
NORTH EAST AIR  
PORTLAND INTERNATIONAL AIRPORT

PORTLAND, MAINE 04102  
1011 WESTBROOK STREET

DATE

**PHASE I**  
**NEW TERMINAL**  
**ADDITION**  
**FLOOR PLAN**

14 DEC '15

AS NOTED

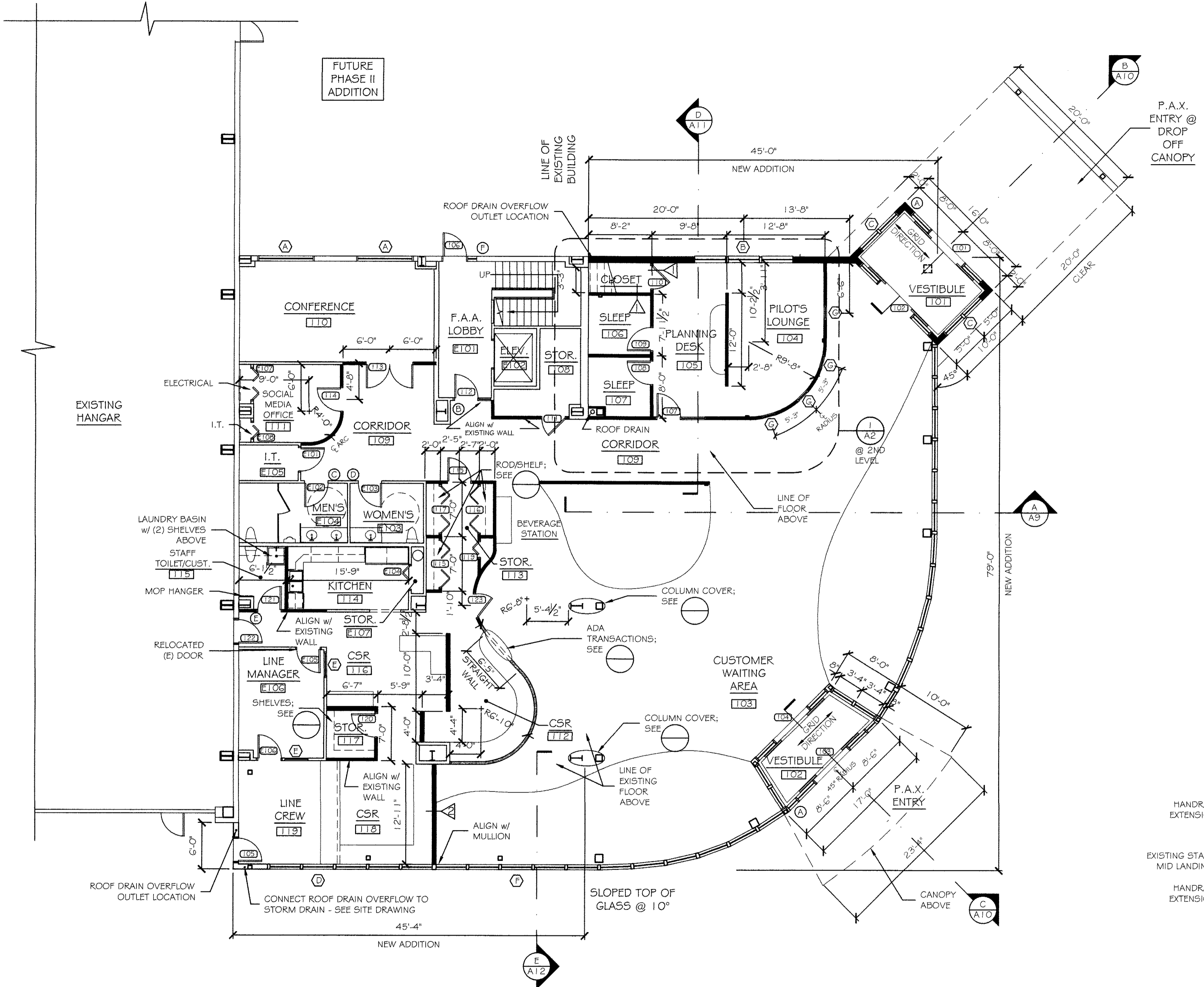
BGH/mgk

150655

1/2 SHEET

**A2**

COPYRIGHT  
REPRODUCTION OR REV. OF THIS  
DOCUMENT WITHOUT WRITTEN  
PERMISSION FROM GRANT HAYS  
ASSOCIATES IS PROHIBITED.



**PARTITION LEGEND**

|  |          |
|--|----------|
|  | EXISTING |
|  | PHASE I  |

**FLOOR PLAN AT NEW TERMINAL ADDITION**

SCALE: 1/8" = 1'-0"

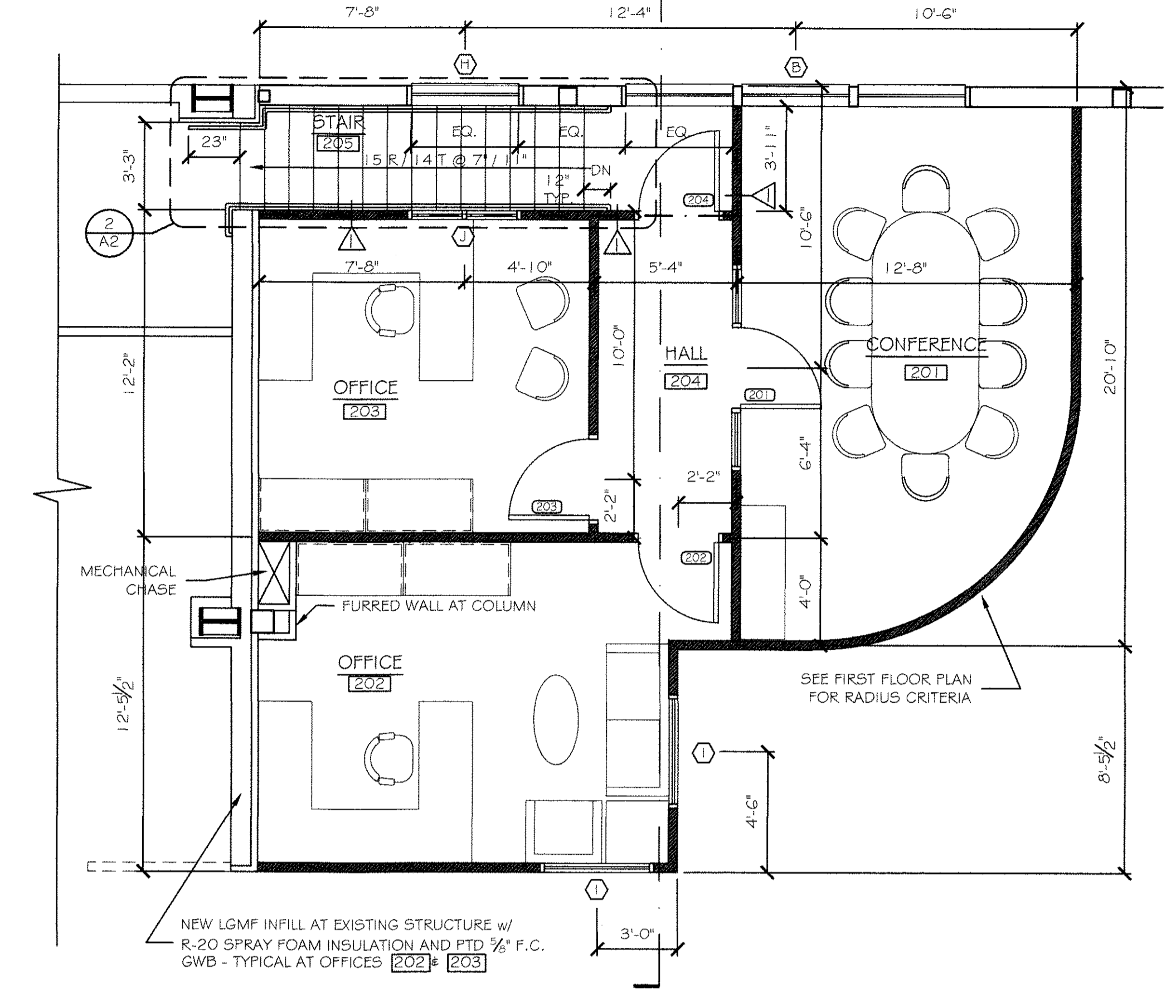


**PARTITION NOTES:**

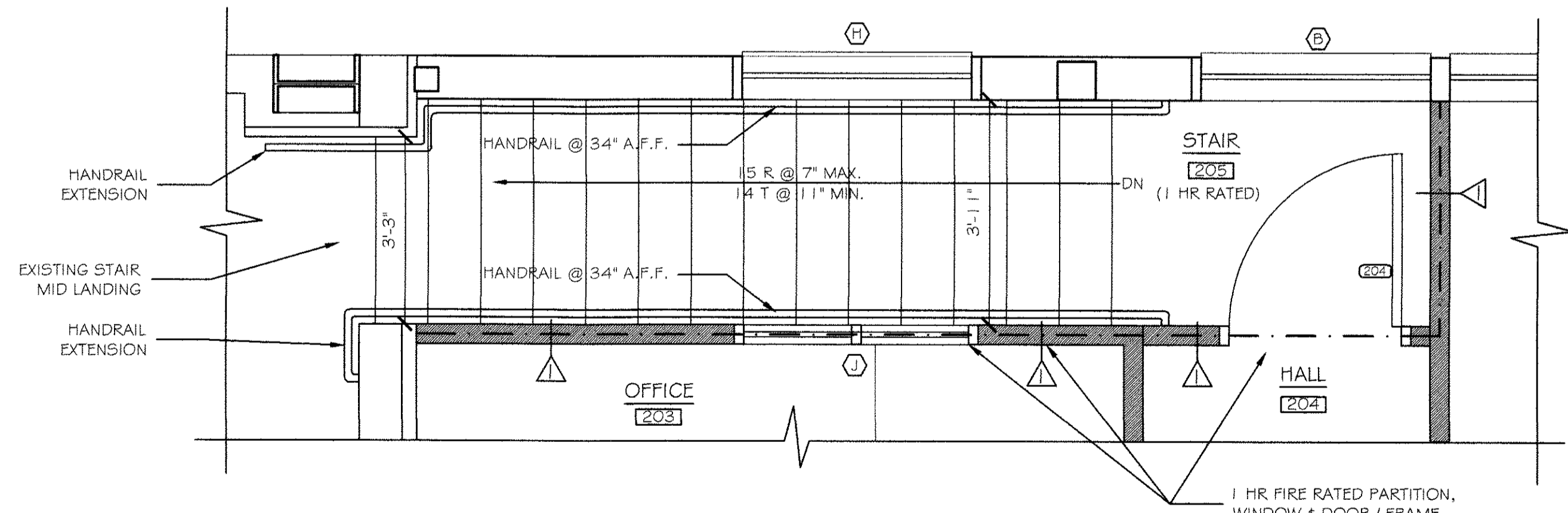
- SEE FOR ALL INTERIOR PARTITIONS U.N.O.
- SEE FOR PARTITION TYPE (ONE HOUR RATED)
- SEE FOR PARTITION TYPE

**NOTES:**

- SEE EXTERIOR ELEVATIONS FOR NEW WINDOWS AT EXISTING OPENINGS TO REMAIN
- SEE FLOOR FINISHES PLAN FOR ADDITIONAL DIMENSIONS
- SEE WINDOW SCHEDULE FOR NEW INTERIOR WINDOWS AT EXISTING SECOND FLOOR FAA OFFICE AREA OPENINGS. REFER TO DEMOLITION ELEVATIONS NOTES &
- SEE I-A23 FOR SIGNAGE



**① OFFICES ABOVE PILOT'S SUITE**  
SCALE: 1/4" = 1'-0"



**② STAIR 205 PLAN**  
SCALE: 1/2" = 1'-0"