

Section 15

WILDLIFE

Wildlife Review

Inland Fisheries and Wildlife has been contacted regarding the projected impact on wildlife for the Portland International Jetport parking garage project. Comments from Inland Fisheries and Wildlife that have not yet been received will be forwarded to the City of Portland Planning Department upon receipt.

Attachments

Letter from Dufresne-Henry to Inland Fisheries and Wildlife, dated December 13, 2000.



December 13, 2000

Mr. Phillip Bozenhard
Regional Biologist
IFW
358 Shaker Road
Gray, ME 04039

**Subject: Portland International Jetport
Planning Board Review**

Dear Mr. Bozenhard:

Dufresne-Henry is part of a design team that is responsible for the design development of a new 1,600 +/- car parking garage at the Portland International Jetport. This project is anticipated to start construction in the spring of 2001. The project is aimed at relieving parking congestion for the next 5 to 10 year period. We have enclosed a project location map and a construction phasing plan for your information.

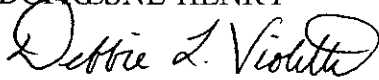
The proposed project will include the following components:

- A new loop road that will circle the new garage and create an infield area.
- Relocation of numerous utilities, including primary electrical and telephone service to the facility.
- A recessed level of the garage to be used for rental car operations.
- An overpass structure that will carry traffic on the loop road over the ramp for drop off and returns for the rental car operation.
- Several retaining walls achieve grade separation.

The proposed project is being submitted to the City of Portland Planning Board for approval. The Inland Fisheries and Wildlife's notification and review of the proposed project is required as part of the Planning Board Submittal. Please review the enclosed information and confirm with us in writing whether or not your organization has any concerns associated with the proposed project.

Thank you for your assistance. Please contact us if additional information is needed to make your assessment.

Sincerely yours,
DUFRESNE-HENRY



Debbie L. Violette
Staff Engineer

Enc.: (1) Location Map
(1) Construction Phasing Plan

cc: Paul Bradbury, PWM
Mickey Krockmalnic, DHK
Jeff Preble, Dufresne-Henry

Section 16

HISTORIC SITES

Historic Sites Review

The Maine Historic Preservation Commission has been contacted regarding the historic impacts from the proposed parking garage project for the Portland International Jetport. A letter from the Maine Historic Preservation Commission is included herein. The Maine Historic Preservation Commission, "find no historic properties [historic, architectural or archaeological] affected by this project."

Attachments

Letter from the Maine Historic Preservation Commission to Dufresne-Henry, dated January 5, 2001.

Letter from Dufresne-Henry to the Maine Historic Preservation Commission, dated December 13, 2000.



December 13, 2000

Mr. Earle G. Shettleworth
State Historic Preservation Officer
Maine Historic Preservation Commission
55 Capitol Street
66 State House Station
Augusta, ME 04333

**Subject: Portland International Jetport
Planning Board Review**

Dear Mr. Shettleworth:

Dufresne-Henry is part of a design team that is responsible for the design development of a new 1,600 +/- car parking garage at the Portland International Jetport. This project is anticipated to start construction in the spring of 2001. The project is aimed at relieving parking congestion for the next 5 to 10 year period. We have enclosed a project location map and a construction phasing plan for your information.

The proposed project will include the following components:

- A new loop road that will circle the new garage and create an infield area.
- Relocation of numerous utilities, including primary electrical and telephone service to the facility.
- A recessed level of the garage to be used for rental car operations.
- An overpass structure that will carry traffic on the loop road over the ramp for drop off and returns for the rental car operation.
- Several retaining walls achieve grade separation.

Mr. Earle Shettleworth
December 13, 2000
Page 2

The proposed project is being submitted to the City of Portland Planning Board for approval. The Maine Historic Preservation Commission's notification and review of the proposed project is required as part of the Planning Board Submittal. Please review the enclosed information and confirm with us in writing whether or not your organization has any concerns associated with the proposed project.

Thank you for your assistance. Please contact us if additional information is needed to make your assessment.

Sincerely yours,
DUFRESNE-HENRY



Debbie L. Violette
Staff Engineer

Enc.: (1) Location Map
(1) Construction Phasing Plan

cc: Paul Bradbury, PWM
Mickey Krockmalnic, DHK
Jeff Preble, Dufresne-Henry



MAINE HISTORIC PRESERVATION COMMISSION
55 CAPITOL STREET
65 STATE HOUSE STATION
AUGUSTA, MAINE
04333

ANGUS S. KING, JR.
GOVERNOR

EARLE G. SHETTLEWORTH, JR.
DIRECTOR

January 5, 2001

Debbie L. Violette
Dufresne-Henry
22 Free Street
Portland, Maine 04101-3900

Project: MHPC #2629 - Portland International Jetport - New Parking Garage
Location: Portland, Maine


Dear Ms. Violette:

In response to your recent request, I have reviewed the information received December 19, 2000 to initiate consultation on the above referenced project.

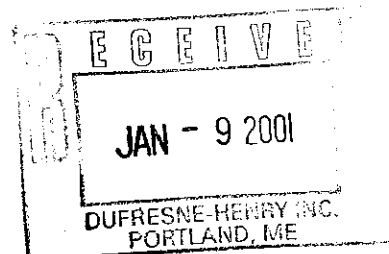
Based upon the proposed scope of work for this project and the project location, no additional identification efforts are warranted at this time as there is adequate documentation for a finding on historic properties. Our office feels that the subject property and area of potential effects does not contain resources eligible for listing in the National Register of Historic Places. Therefore, I find no historic properties [historic, architectural or archaeological] affected by this project.

Please contact Dana R. Vaillancourt of my staff if you require further assistance in this matter.

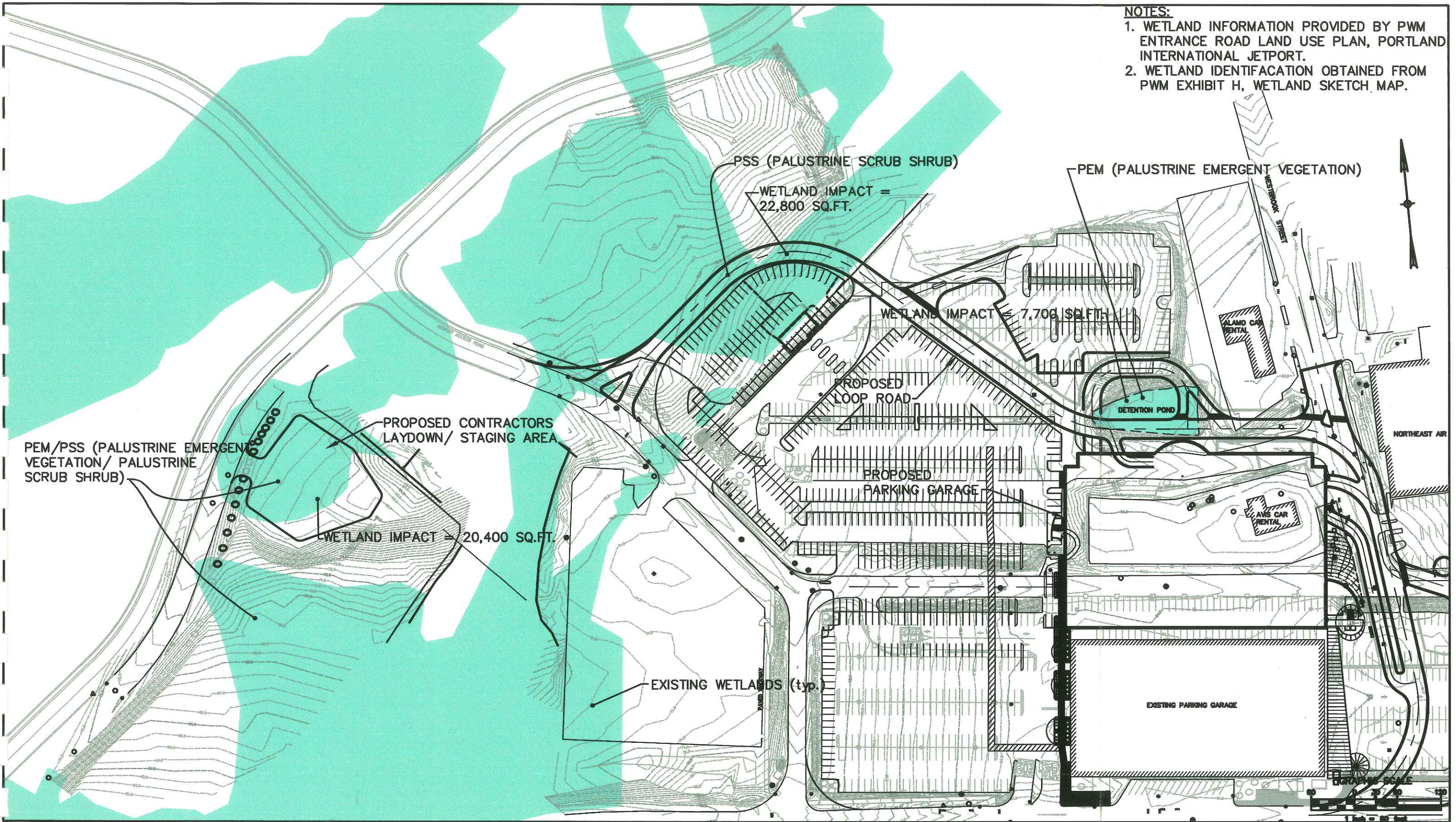
Sincerely,


Earle G. Shettleworth, Jr.
State Historic Preservation Officer

EGS/drv



- NOTES:**
1. WETLAND INFORMATION PROVIDED BY PWM ENTRANCE ROAD LAND USE PLAN, PORTLAND INTERNATIONAL JETPORT.
 2. WETLAND IDENTIFICATION OBTAINED FROM PWM EXHIBIT H, WETLAND SKETCH MAP.



WETLANDS PLAN

PARKING MASTER PLAN · PORTLAND INTERNATIONAL JETPORT · PORTLAND, ME

CITY OF PORTLAND, PORTLAND, ME · DEPARTMENT OF WATERFRONT AND TRANSPORTATION

- DOMENECH HICKS & KROCKMALNIC, INC.
- DUFRESNE-HENRY, INC.
- RICH AND ASSOCIATES, INC.
- GORRILL-PALMER CONSULTING ENGINEERS, INC.
- HALEY & ALDRICH, INC.
- HANSCOMB, INC.

