

### SYSTEM CLASSIFICATION

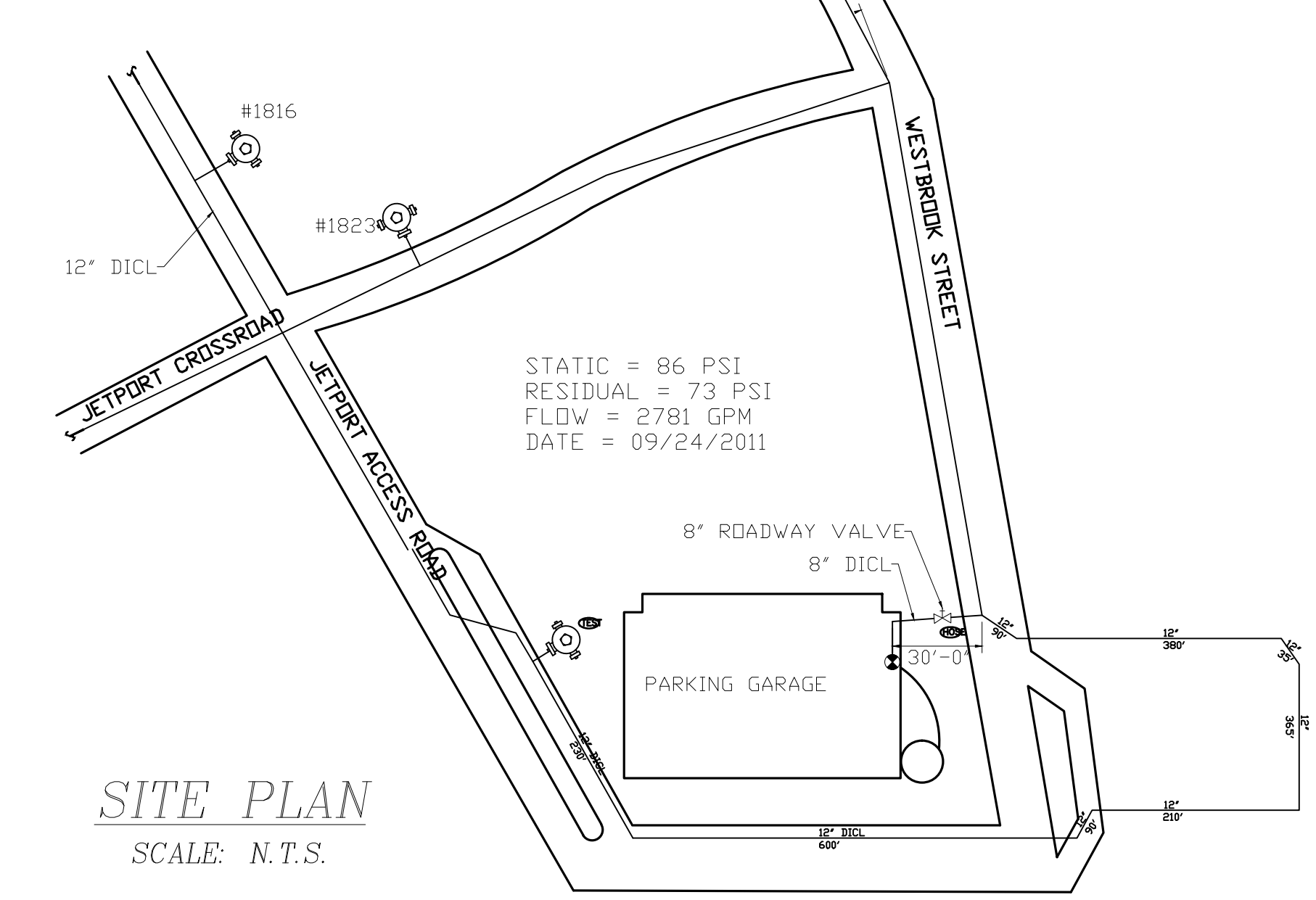
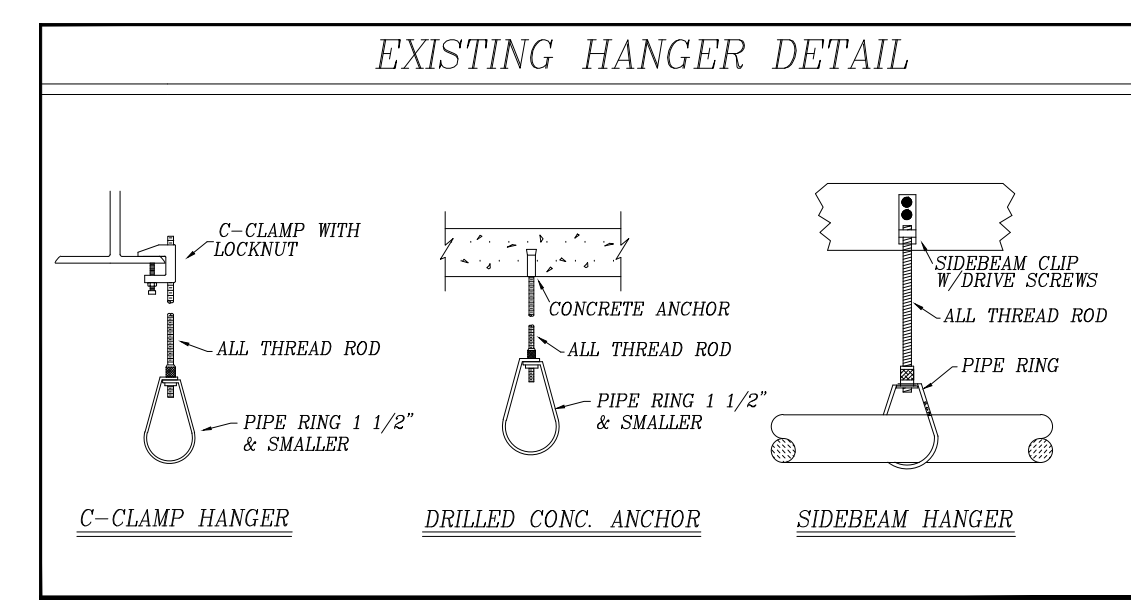
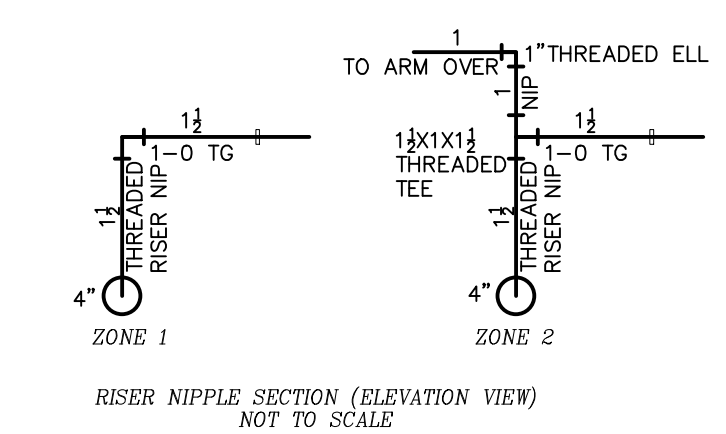
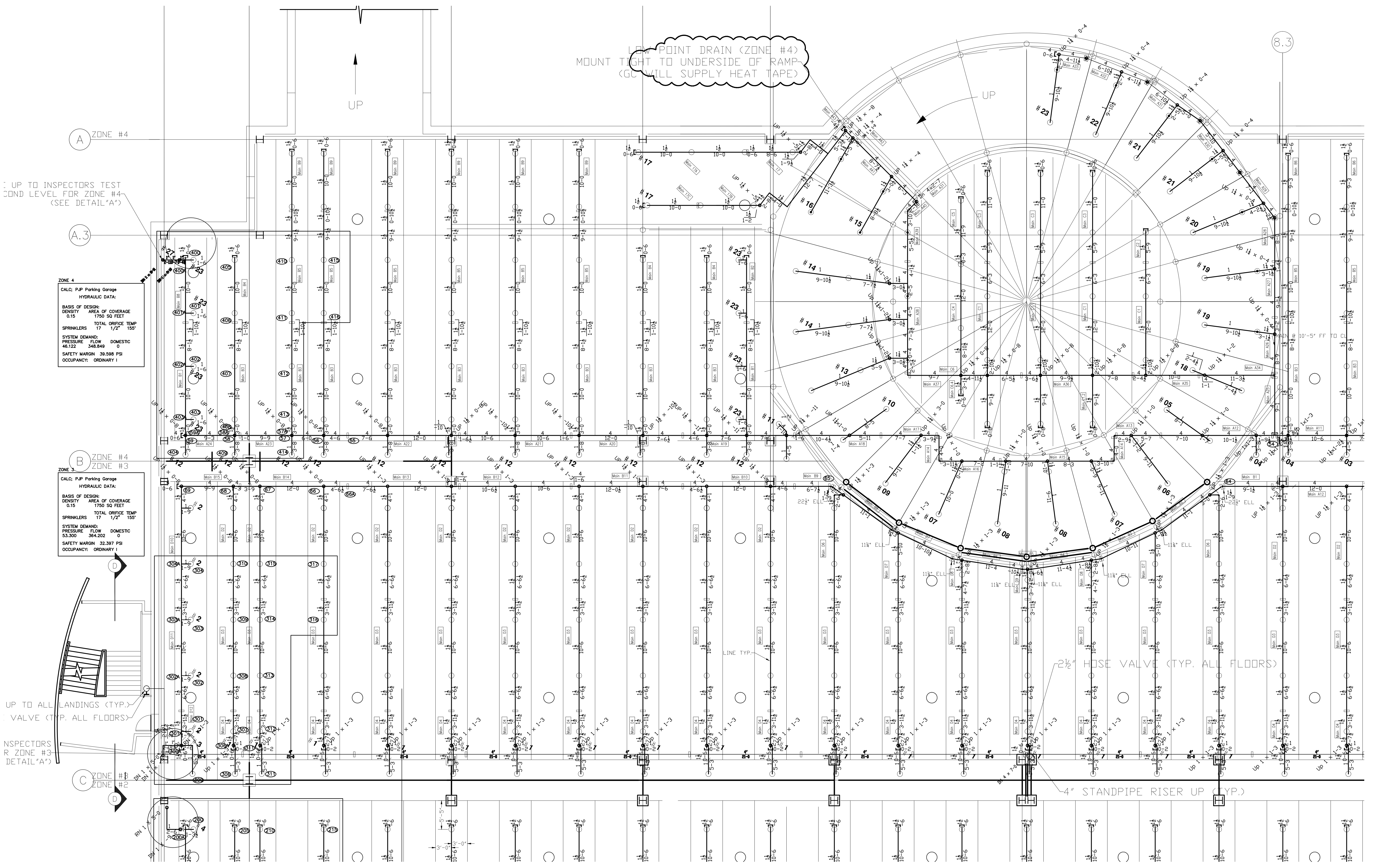
EXISTING DRY SYSTEM IS NFPA 13 ORDINARY HAZARD GROUP II  
EXISTING BUILDING IS A PARKING GARAGE LOCATED AT THE PORTLAND  
JETPORT ALL AREAS OF BUILDING CURRENTLY MEET GUIDELINES OF NFPA 13  
AND THE AHJ, CITY OF PORTLAND ME.

### GENERAL NOTES

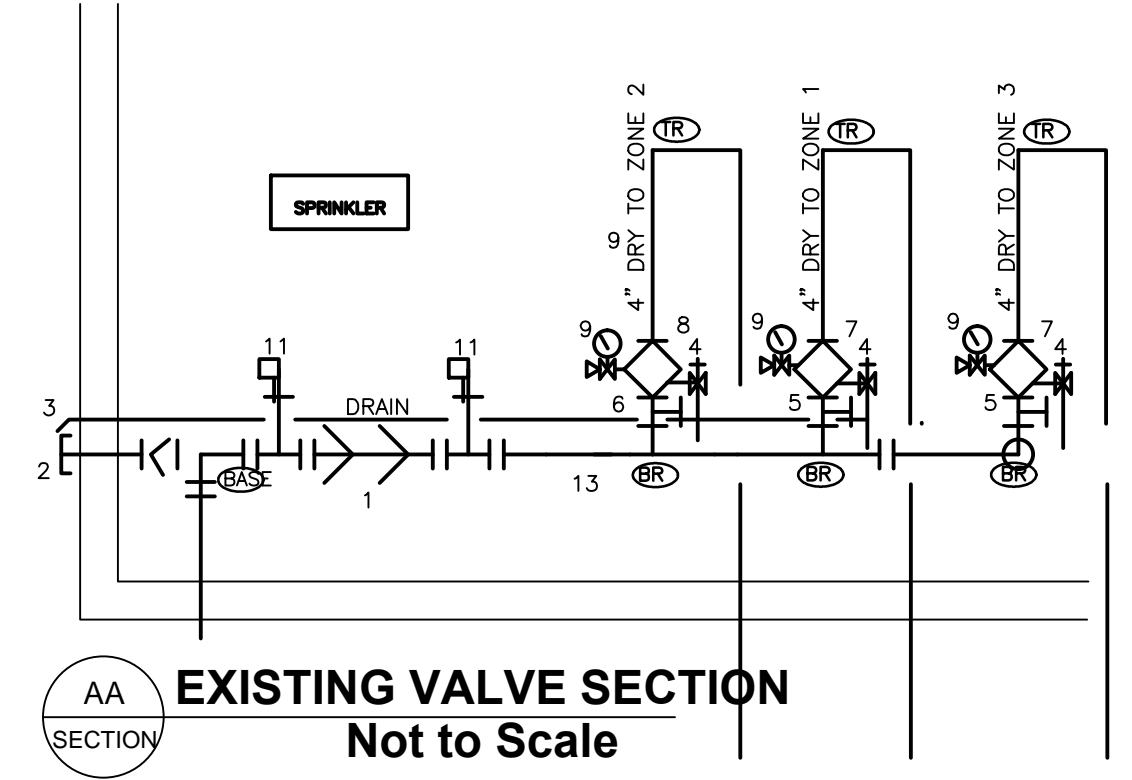
SCOPE OF WORK CONSISTS OF REPLACE EXISTING PIPING WITH ALL NEW GALVANIZED PIPE ON ZONES 1&2 OF LOWER LEVEL PARKING GARAGE ONLY. MAIN WILL BE 4" GALVANIZED SCH 10 WITH GROOVED FITTINGS AND WELD O LETS. ALL RISERS AND ARM OVERS ARE TO BE THREADED GALVANIZED SCH 40 WITH SCREWED CAST IRON FITTINGS. LINES WILL BE 1.5" SCH 40 WITH GROOVED FITTINGS AND WELD O LETS. SPRINKLER MAIN IS TO BE PITCHED @ 1/4" PER 10'. SPRINKLER HEADS AND SPRINKLER HEADS ARE TO BE REPLACED WITH SCHRAGER 1.5" SCH 40 WITH GROOVED FITTINGS AND WELD O LETS. SPRINKLER HEAD LOCATIONS AND VALVE COMPONENTS ARE TO REMAIN THE SAME. ALL WORK IS TO BE COORDINATED WITH THE PORTLAND JETPORT. ALL REPLACED LOW POINT DRAINS WILL BE WRAPPED WITH HEAT TRACE

### LEGEND:

- RISER LOCATION
- RISE OR DROP
- GROOVED COUPLING
- ⊗ HYDRAULIC REFERENCE POINT
- ⊗ CEILING HEIGHT
- HANGER
- EXISTING SPRINKLER PIPING
- NEW SPRINKLER PIPING
- HYDRAULIC REFERENCE AREA
- F k= "X"-X" FINISHED FLOOR TO PIPE CENTERLINE
- TOS k= "X"-X" TOP OF STEEL TO PIPE CENTERLINE
- BOJ k= "X"-X" BOTTOM OF JOIST TO PIPE CENTERLINE
- BOT k= "X"-X" BOTTOM OF TRUSS TO PIPE CENTERLINE



STATIC = 86 PSI  
RESIDUAL = 73 PSI  
FLOW = 2781 GPM  
DATE = 09/24/2011



- ZONE 1  
207 RELIABLE F1FR56  
155°F BRASS UPRIGHT  
1/2" K=5.6  
SIN RA1124
- ZONE 2  
180 RELIABLE F1FR56  
155°F BRASS UPRIGHT  
1/2" K=5.6  
SIN RA1124

**DEAN & ALLYN, INC.**  
FIRE PROTECTION • SPECIAL HAZARD  
PO BOX 709, GRAY, MAINE 04039  
(207)657-5646 FAX:(207)657-5647

SITE PLAN  
SCALE: N.T.S.

		DANA A. STEWART NICET IV - #064544		DRAWING TITLE: XXX		REV. 0	
APPROVED BY	DATE	SURVEYED BY	SEC 11/25/13	JOB#		PORTLAND JETPORT 2013 Parking Garage RePipe Portland Maine	
		DRAWN BY	SEC 12/01/13			NO. OF SPRINKLERS IN JOB XXX	
		CHECKED BY	DAS			NO. OF SPRINKLERS IN JOB 387	
		AT DEAN & ALLYN, INC				CONTRACT WITH: Owner CITY OF PORTLAND	
		SCALE 1/8"=1'-0" U/N				CONTRACT NO. C131180	
		SHEET NO. 1 OF 2					
REVISIONS	DATE						