

### SYSTEM CLASSIFICATION

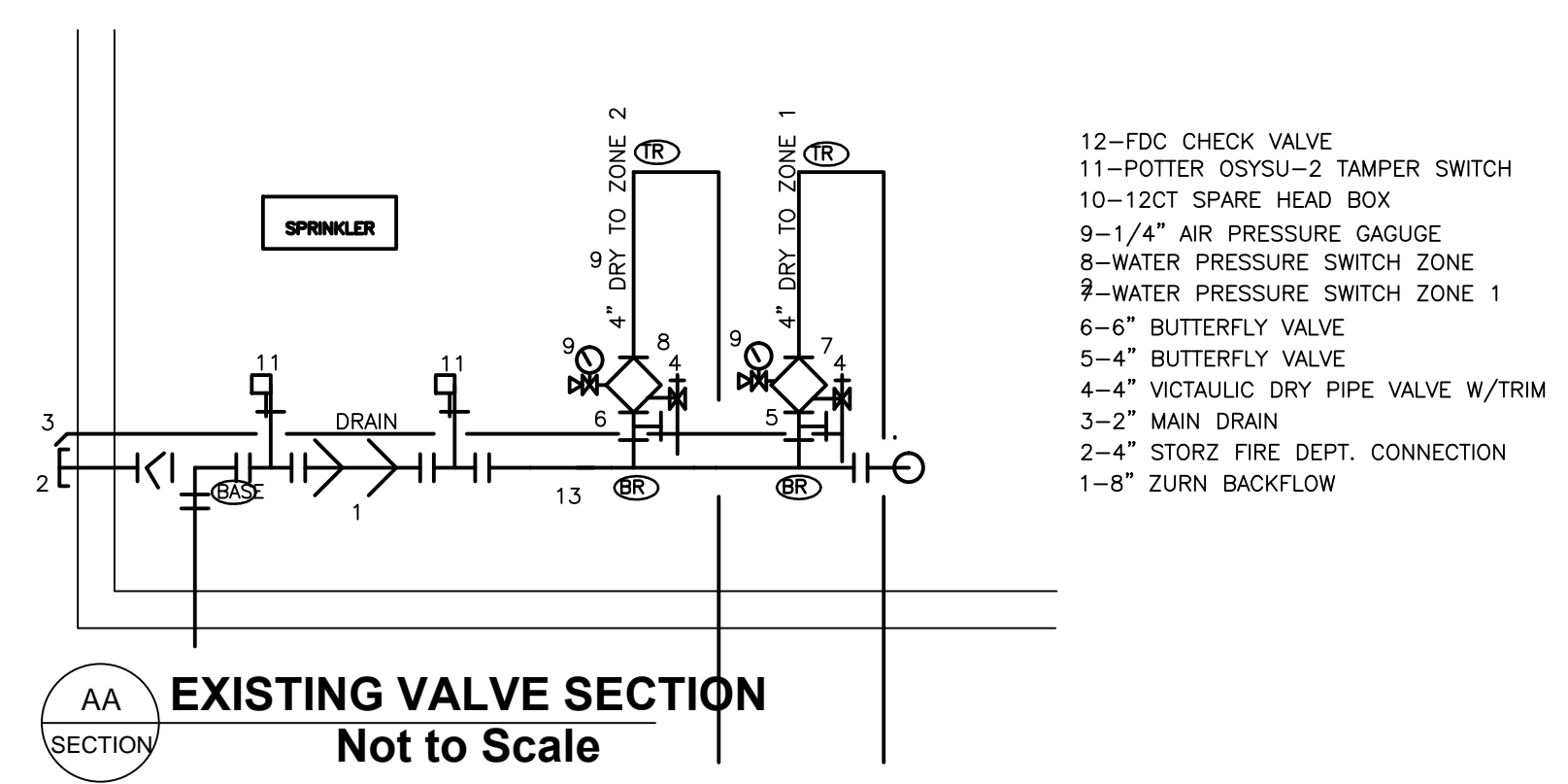
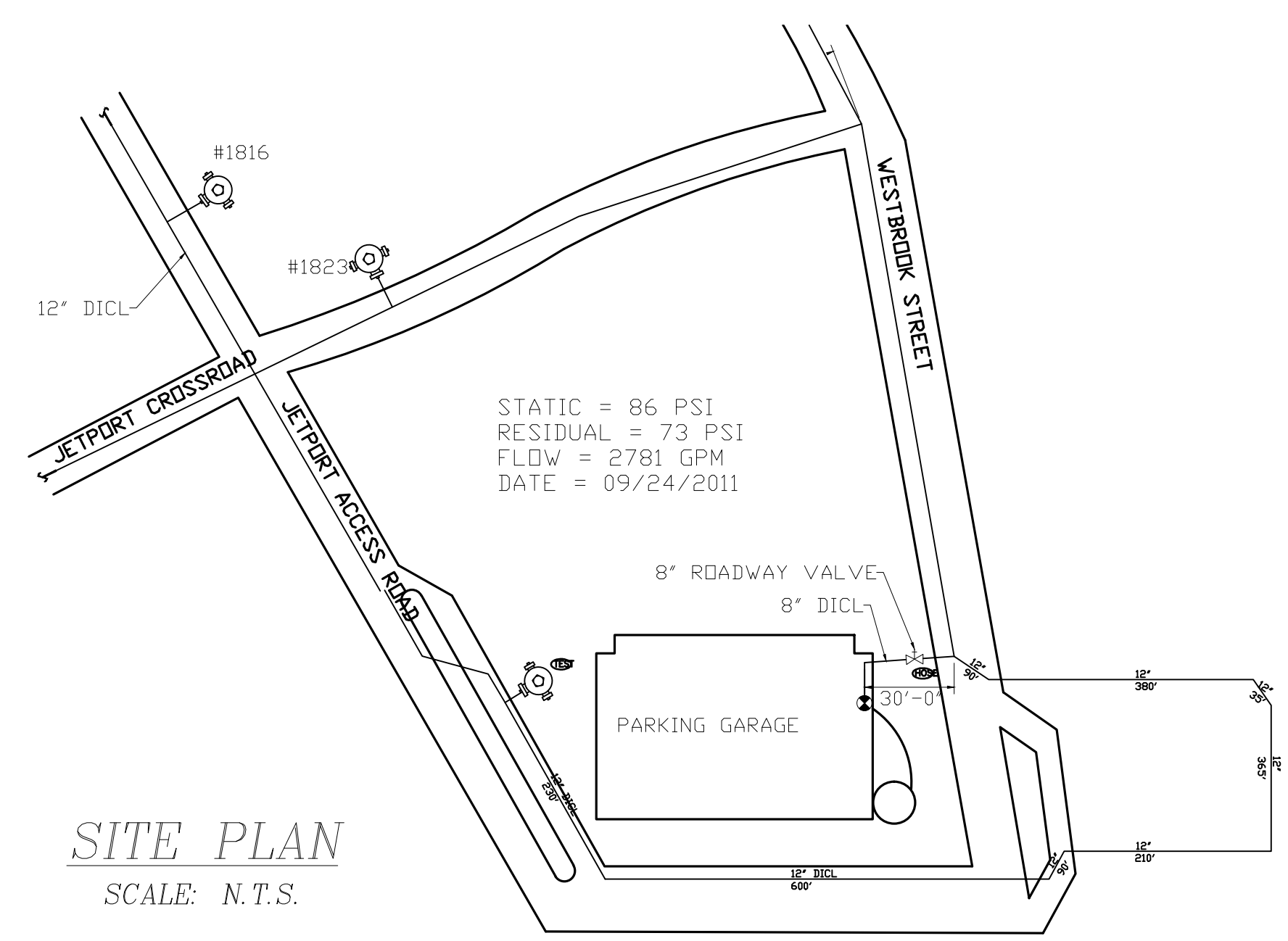
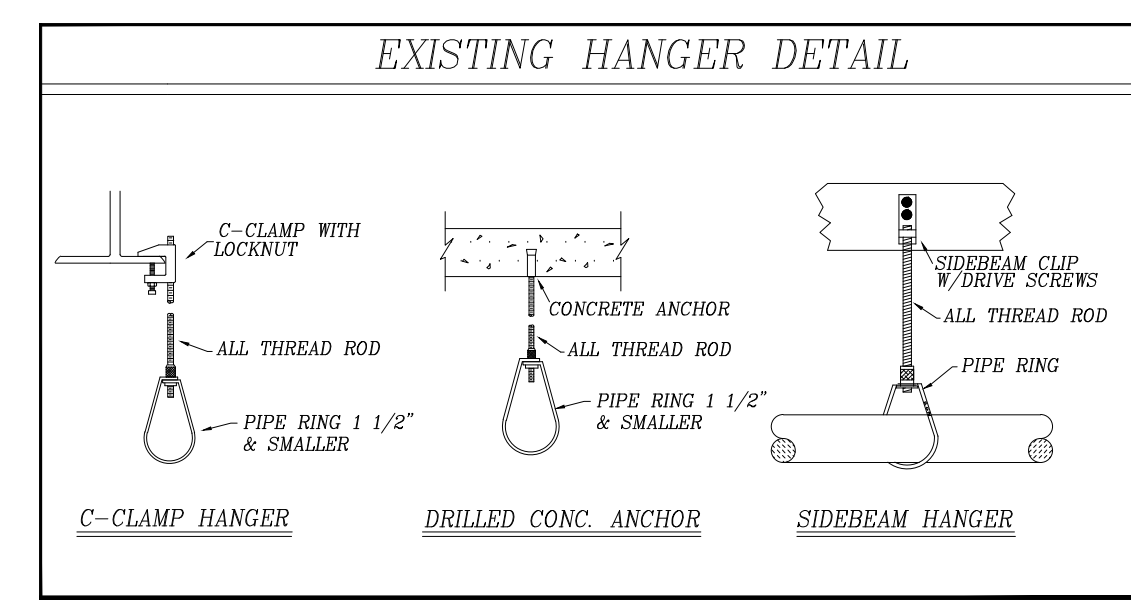
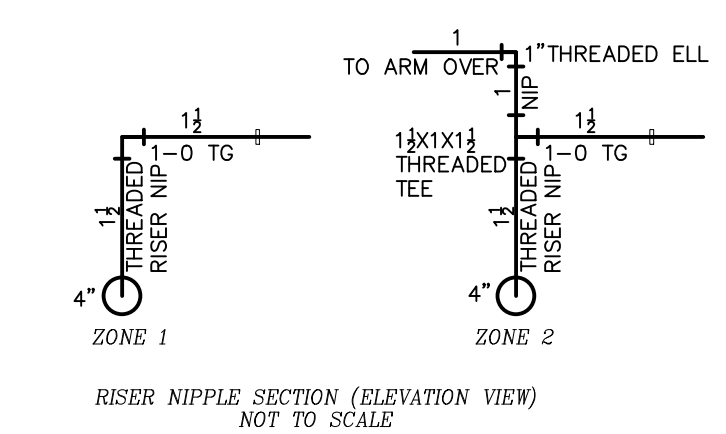
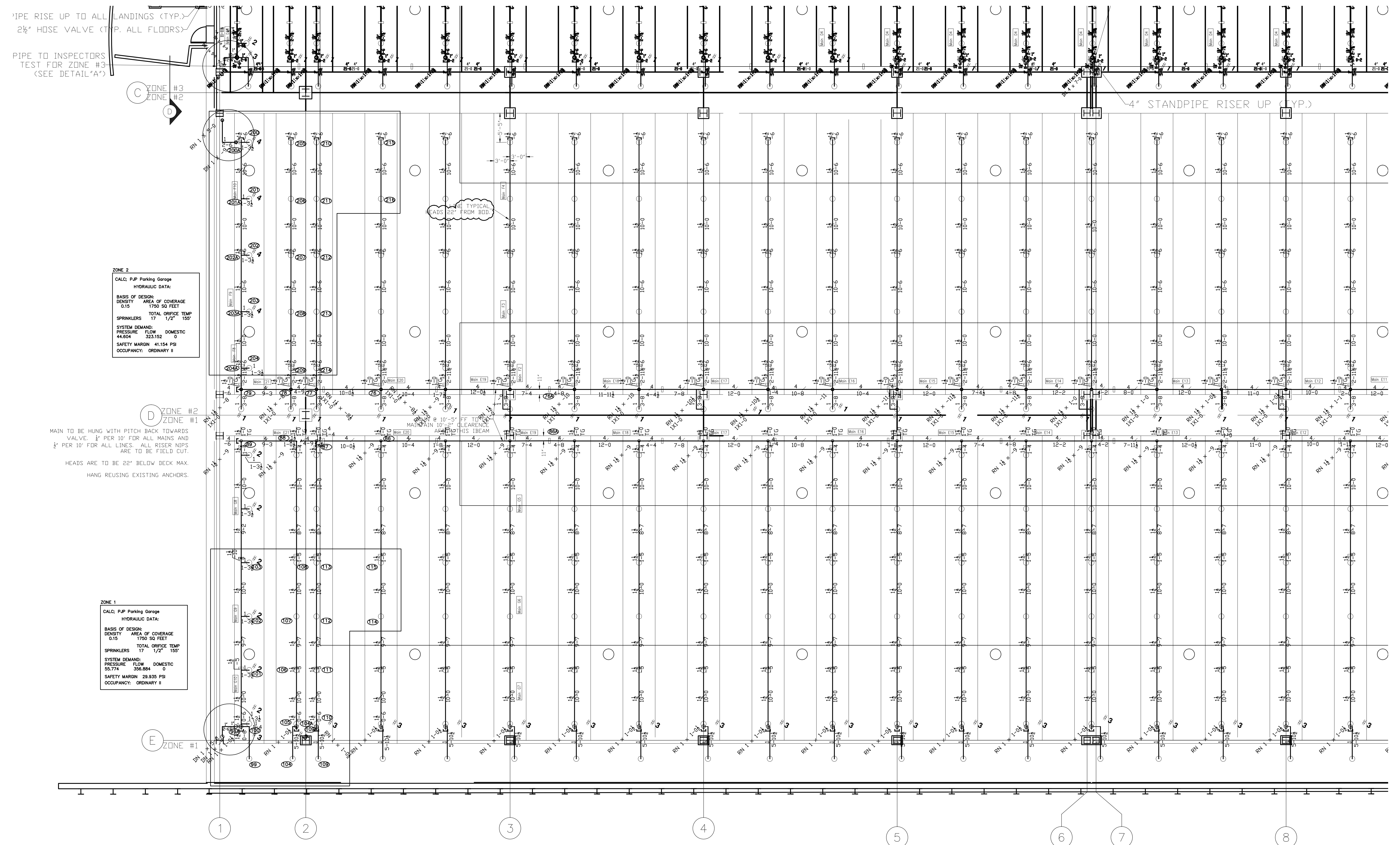
EXISTING DRY SYSTEM IS NFPA 13 ORDINARY HAZARD GROUP II  
EXISTING BUILDING IS A PARKING GARAGE LOCATED AT THE PORTLAND  
JETPORT ALL AREAS OF BUILDING CURRENTLY MEET GUIDELINES OF NFPA 13  
AND THE AHJ, CITY OF PORTLAND ME.

### GENERAL NOTES

SCOPE OF WORK CONSISTS OF REPLACE EXISTING PIPING WITH ALL NEW GALVANIZED PIPE ON ZONES 1&2 OF LOWER LEVEL PARKING GARAGE ONLY. MAIN WILL BE 4" GALVANIZED SCH 10 WITH GROOVED FITTINGS AND WELD O LETS.  
LINES WILL BE 1.5" SCH 40 WITH GROOVED FITTINGS AND WELD O LETS. ALL RISERS AND ARM OVERS ARE TO BE THREADED GALVANIZED SCH 40 WITH SCREWED CAST IRON FITTINGS.  
ALL HANGERS AND SPRINKLER HEADS ARE TO BE REPLACED  
SPRINKLER MAIN IS TO BE PITCHED @ 1/4" PER 10'  
SPRINKLER LINES ARE TO BE PITCHED @ 1/2" PER 10'  
SPRINKLER HEAD LOCATIONS AND VALVE COMPONENTS ARE TO REMAIN THE SAME.  
ALL WORK IS TO BE COORDINATED WITH THE PORTLAND JETPORT  
ALL REPLACED LOW POINT DRAINS WILL BE WRAPPED WITH HEAT TRACE

### LEGEND:

- RISER LOCATION
- RISE OR DROP
- GROOVED COUPLING
- ⊗ HYDRAULIC REFERENCE POINT
- ⊗ CEILING HEIGHT
- HANGER
- EXISTING SPRINKLER PIPING
- NEW SPRINKLER PIPING
- HYDRAULIC REFERENCE AREA
- F k= X'-X" FINISHED FLOOR TO PIPE CENTERLINE
- TOS k= X'-X" TOP OF STEEL TO PIPE CENTERLINE
- BOJ k= X'-X" BOTTOM OF JOIST TO PIPE CENTERLINE
- BOT k= X'-X" BOTTOM OF TRUSS TO PIPE CENTERLINE



○	207	RELIABLE F1FR56
	155°F	
○	180	RELIABLE F1FR56
	155°F	
		BRASS UPRIGHT
		1/2" K=5.6
		SIN RA1124

**DEAN & ALLYN, INC.**  
FIRE PROTECTION - SPECIAL HAZARD  
PO BOX 709, GRAY, MAINE 04039  
(207)657-5646 FAX:(207)657-5647

SITE PLAN  
SCALE: N.T.S.

APPROVED BY		DATE	SURVEYED BY	SEC 11/25/13	DRAWING TITLE: XXX	REV. 0
DRAWN BY		DATE	CHECKED BY	SEC 12/01/13	JDB: Portland Jetport 2013 Parking Garage RePipe Portland Maine	NO. OF SPRINKLERS ON THIS SHEET XXX
AT DEAN & ALLYN, INC		DATE	SCALE 1/8"=1'-0" U/N	NO. OF SPRINKLERS ON JOB 387		
SUBMIT FOR APPROVAL		DATE	SHEET NO. 1 OF 2	CONTRACT WITH: Owner CITY OF PORTLAND	CONTRACT NO. C131180	