

**Portland International
Jetport**

1001 Westbrook Street
Portland, Maine 04102

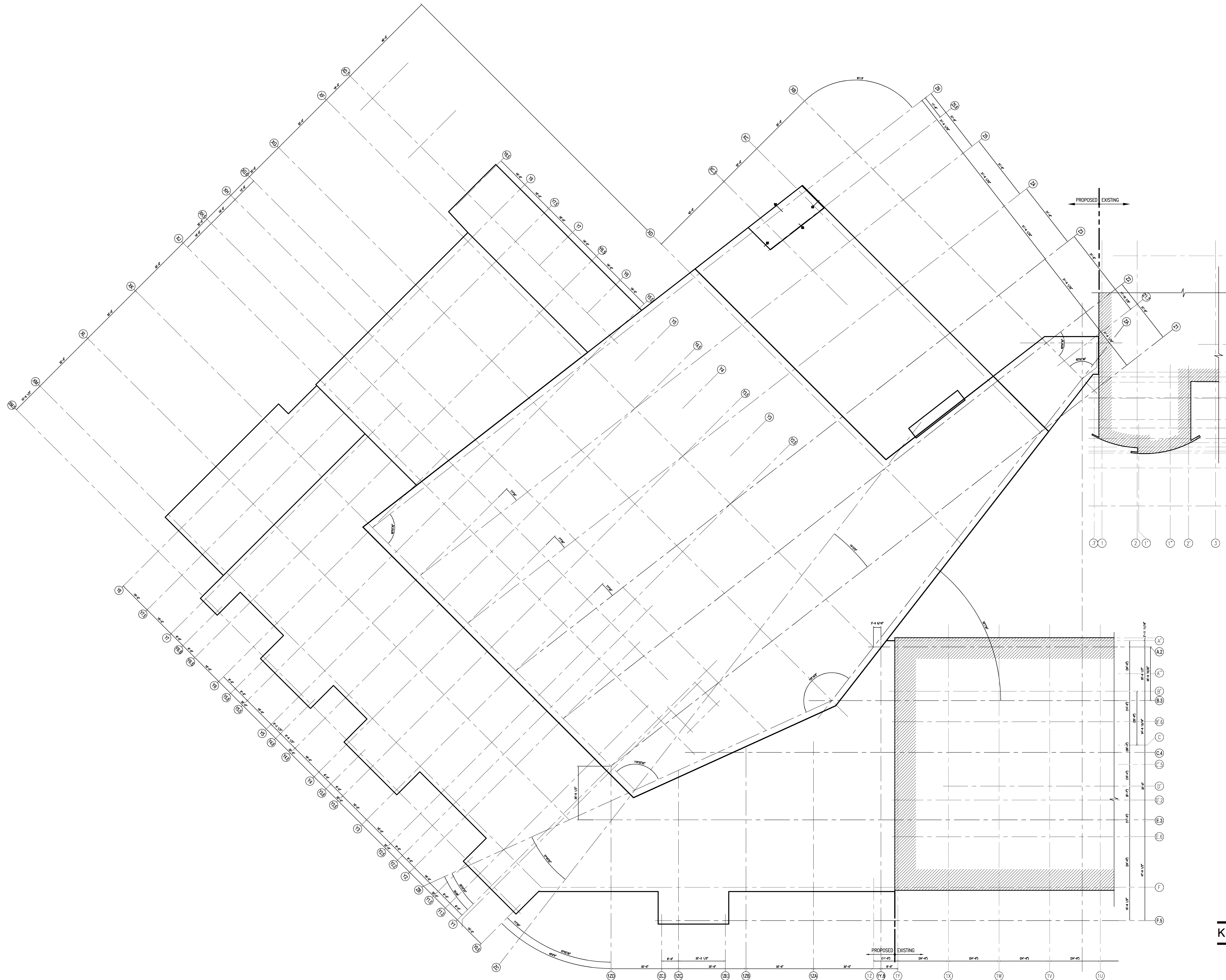
Gensler

2020 K Street, NW
Suite 200
Washington, DC 20006
Telephone 202.721.5200
Facsimile 202.872.8587

oest ASSOCIATES, INC.
343 Gorham Road, South Portland, ME 04106 P: (207) 761-1770 F: (207) 774-1246 www.oest.com
engineers • architects • surveyors • construction managers

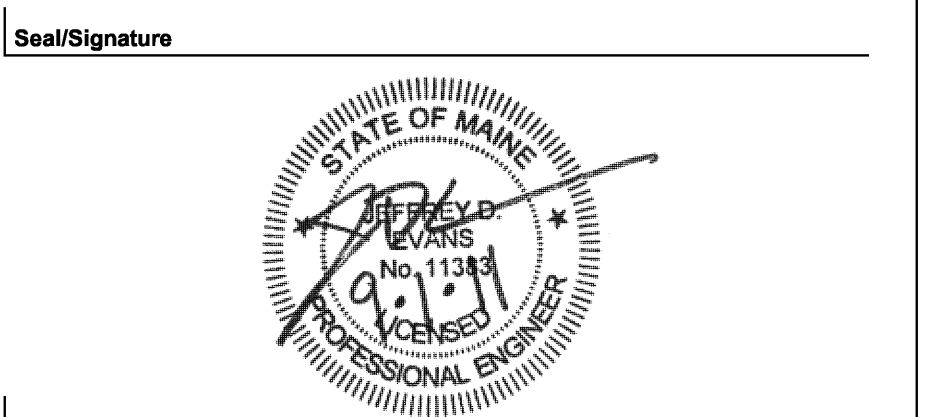
amec

343 Gorham Road, South Portland ME 04106
P: (207) 761-1770 F: (207) 774-1246 www.amec.com



THESE DRAWINGS ARE ISSUED FOR
CONSTRUCTION AND REFLECT ALL AMEC
ISSUED BULLETINS AND SKETCHES.

Issue	Date & Issue Description	By	Check
-- 01	12/03/08	JDE	--
-- 02	01/23/09	JDE	--
-- 03	10/26/09	JDE	--
△ 04	03/15/10	JDE	--
145 05	09/01/11	JDE	--



Project Name
PJM Terminal Enhancement

Project Number
08.6395.000

CAD File Name
T:\5330101\SHEETS\S02.00.00.DWG

Description
OVERALL GRID PLAN

Scale
1/16" = 1'-0"

Ref. North

S02.00.00

©2009 Gensler

OVERALL GRID PLAN
SCALE: 1/16" = 1'-0"

KEY PLAN

