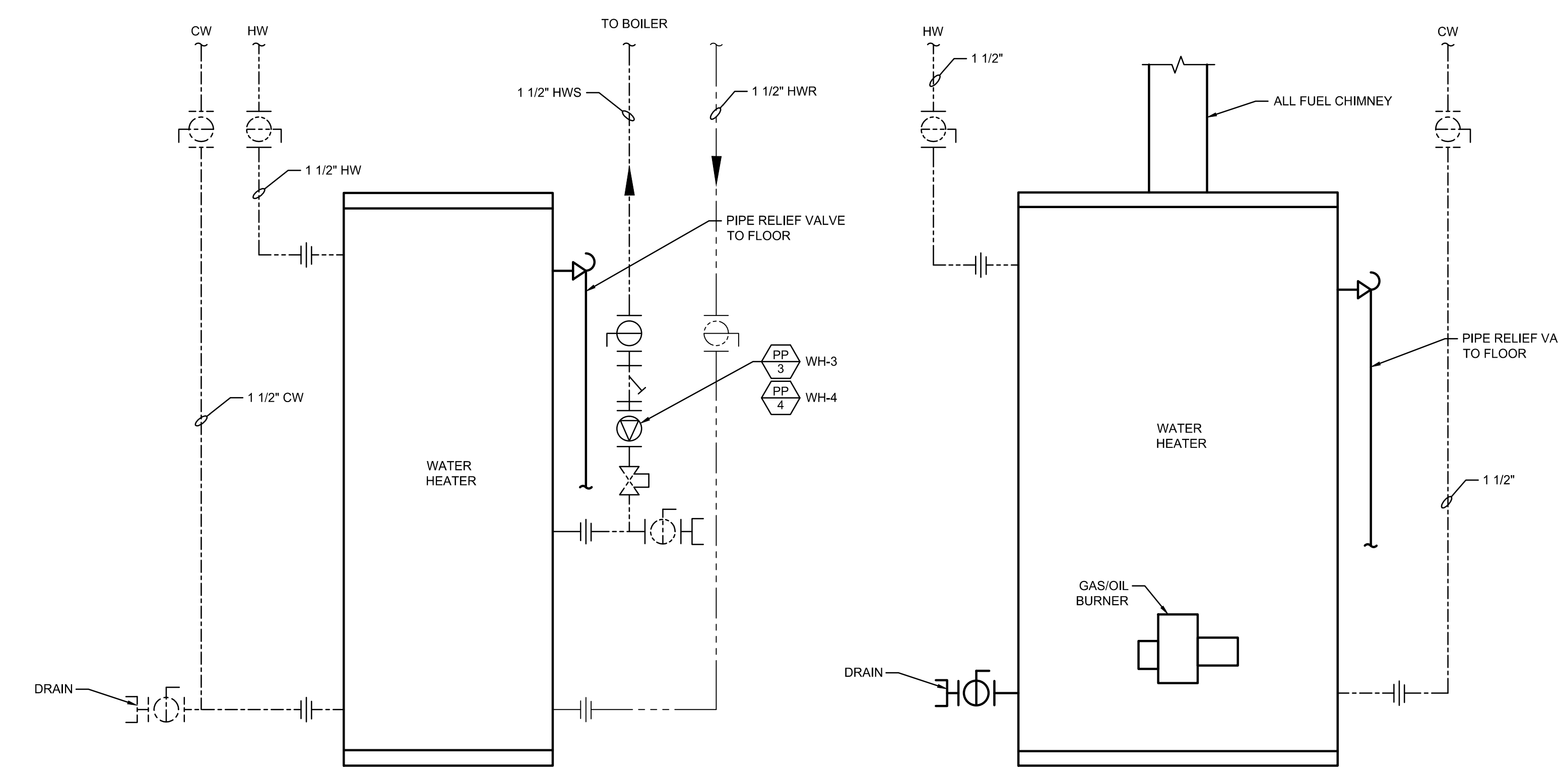
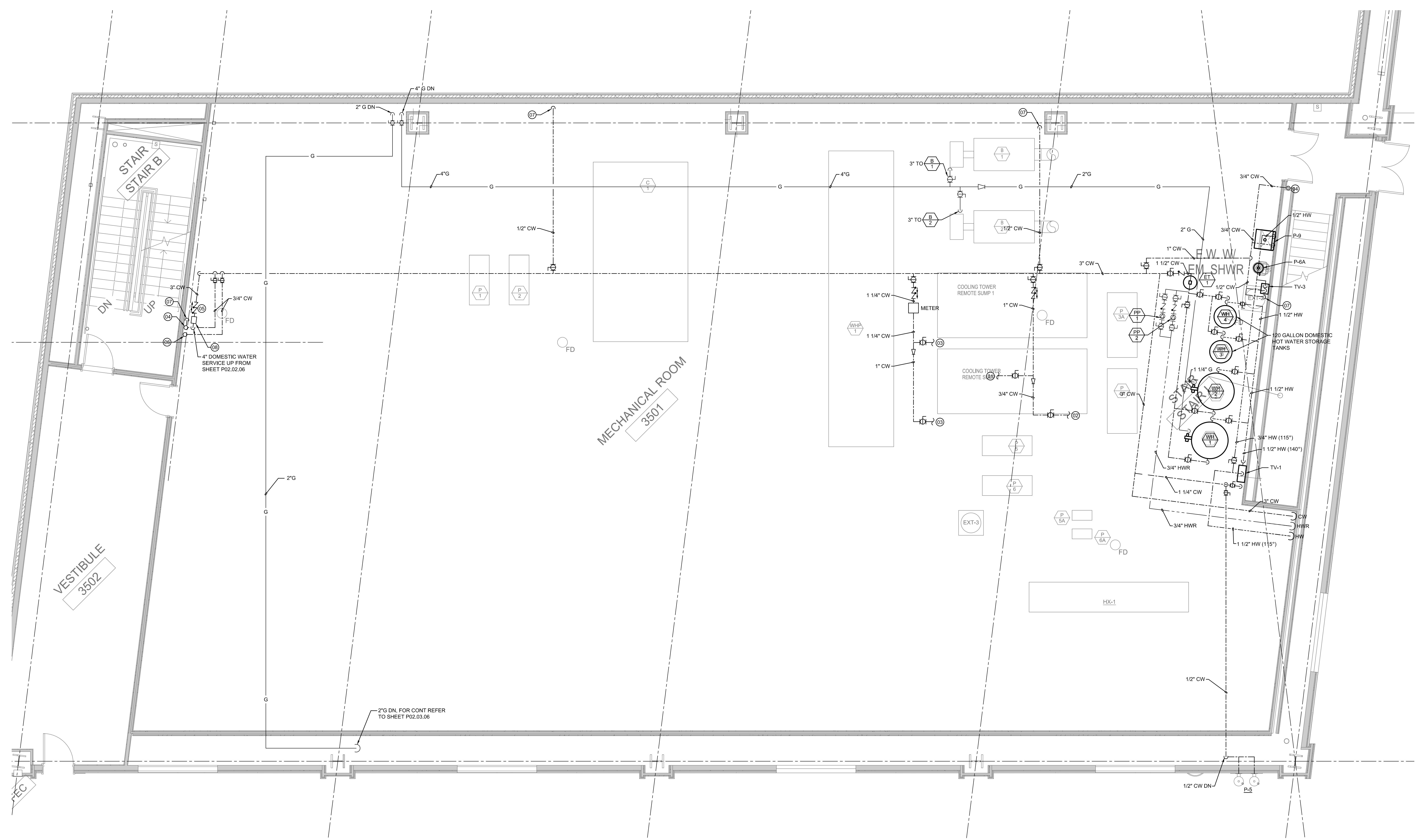


LEVEL 3 - ZONE 4 - CONCESSIONS PLUMBING PART PLAN
SCALE: 1/4" = 1'-0" **4**



WH-3 & 4 SCHEMATIC PIPING **3** **WH-1 & 2 SCHEMATIC PIPING** **2**
SCALE: NOT TO SCALE

- SHEET NOTES**
- 01 3/4" CHILLED WATER SYSTEM MAKE-UP.
 - 02 3/4" HOT WATER HEATING SYSTEM MAKE-UP.
 - 03 1" COOLING TOWER SUMP MAKE-UP
 - 04 3/4" CW UP TO NFHB
 - 05 (2) 3" RPBP (STACKED)
 - 06 3/4" CW DN TO NFHB
 - 07 1/2" DN W BALL VALVE TO TRAP PRIMER.
 - 08 WATER METER WITH REMOTE READER. SEE SHEET P02.02.06 FOR READER LOCATION.
 - 09 RUN SANITARY PIPING IN BEAM POCKET.



MECHANICAL ROOM PLUMBING PART PLAN
SCALE: 1/4" = 1'-0" **1**

Portland International Jetport
1001 Westbrook Street
Portland, Maine 04102

Gensler
2020 K Street, NW
Suite 200
Washington, DC 20006
Telephone 202.771.5200
Facsimile 202.872.8587

AMEC ASSOCIATES, INC.
343 Gorham Road, South Portland, ME 04106
P: (207) 761-1770 F: (207) 774-1246 www.amec.com
engineers • architects • surveyors • construction managers

amec

343 Gorham Road, South Portland ME 04106
P: (207) 761-1770 F: (207) 774-1246 www.amec.com

THESE DRAWINGS ARE ISSUED FOR CONSTRUCTION AND REFLECT ALL AMEC ISSUED BULLETINS AND SKETCHES.

Issue	Date & Issue Description	By	Check
01	12/03/08	KLM	JS
02	01/23/09	CM	JS
03	10/26/09	PWZ	JS
04	01/12/10	PWZ	JS
05	04/23/10	PWZ	JS
06	05/21/10	PWZ	JS
07	10/20/10	PWZ	JS
08	09/01/11	PWZ	JS

GENERAL NOTES
A SEE SHEET P00.00 FOR LEGEND AND GENERAL NOTES.

Project Name
PJM Terminal Enhancement

Project Number
08.6395.000
CAD File Name
T:\6330101\Sheet\P08.00.dwg
Description
PLUMBING ENLARGED PLANS

Scale
1/4" = 1'-0"

P08.03

©2009 Gensler

KEY PLAN

