

SHEET NOTES

- 01 CAP & INSULATE EXIST. CW, HW & HWR LINES.
- 02 1/2" DN W BALL VALVE TO TRAP PRIMER.
- 03 PROVIDE 1/2" CONNECTION W/BALL VALVE BETWEEN HW & HWR.
- 04 RUN LINES TIGHT TO UNDERSIDE OF SOFFIT.
- 05 OFFSET 6" RC BELOW BEAM & RUN ON COLUMN.
- 06 RUN PIPING ON SIDES OF COLUMN, KEEP FACE OF COLUMN CLEAR FOR INSTALLATION OF SECURITY & ALARM EQUIPMENT & APPARATUS.

Portland International Jetport

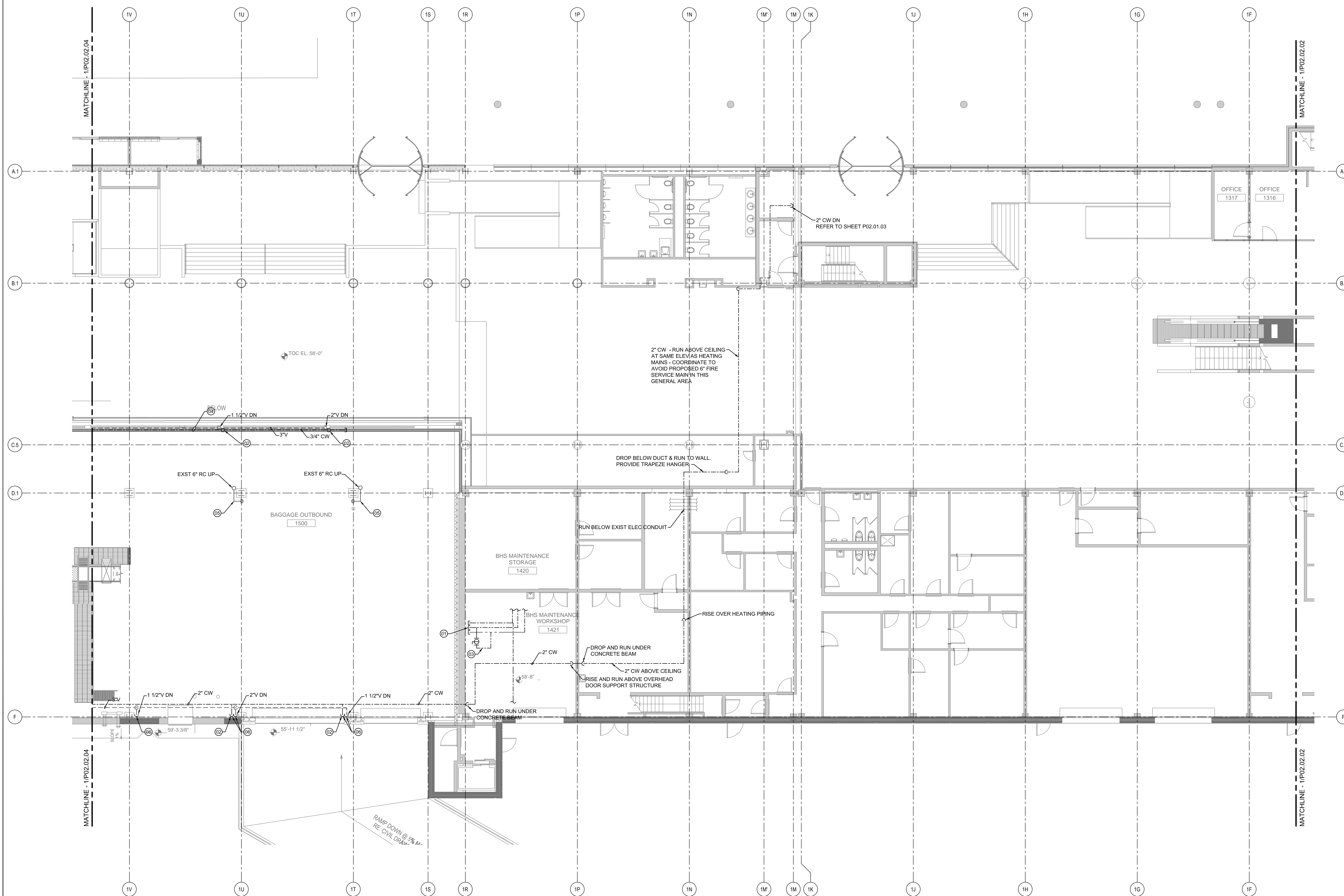
1001 Westbrook Street
Portland, Maine 04102

Gensler

2020 K Street, NW
Suite 200
Washington, DC 20006
Telephone 202.721.5200
Facsimile 202.872.8587

nest ASSOCIATES, INC.
343 Gorham Road, South Portland, ME 04106
P: (207) 761-1770 F: (207) 774-1246 www.nest.com
engineers • architects • surveyors • construction managers

amec
343 Gorham Road, South Portland ME 04106
P: (207) 761-1770 F: (207) 774-1246 www.amec.com



PLUMBING PLAN - LEVEL 2 - ZONE 3
SCALE: 1/8" = 1'-0"

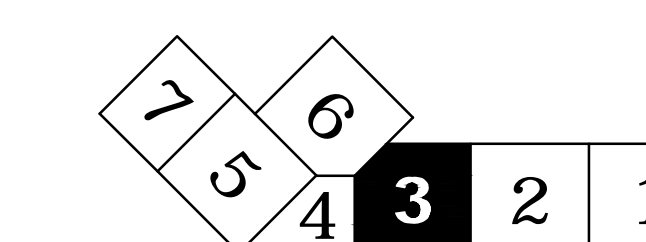
THESE DRAWINGS ARE ISSUED FOR CONSTRUCTION AND REFLECT ALL AMEC ISSUED BULLETINS AND SKETCHES.

GENERAL NOTES

- A SEE SHEET P00.00 FOR LEGEND AND GENERAL NOTES.
- B DO NOT RUN WATER OR DRAIN PIPING OVER ELECTRICAL PANELS OR SWITCH GEAR.
- C COORDINATE PLUMBING FLOOR PENETRATIONS WITH IN-FLOOR RADIANT HEAT.

Issue	Date & Issue Description	By	Check
01	07/11/08	PWZ	JS
02	09/22/08	PWZ	JS
03	12/03/08	KLM	JS
04	01/23/09	CM	JS
05	10/26/09	PWZ	JS
2	06 11/12/09	PWZ	JS
07	07/30/10	PWZ	JS
08	09/01/11	PWZ	JS

KEY PLAN



Scale: 1/8" = 1'-0"

P02.02.03

©2009 Gensler