

SHEET NOTES

- 01 1/2" PEX TUBING FROM TRAP PRIMER BELOW FL TO TRAP.
- 02 CONNECT TO EXST 10" RC.
- 03 SEE C02.02 FOR CONTINUATION.
- 04 CONNECT TO EXST 4" DRAIN.
- 05 CONNECT TO EXST 6" RC.
- 06 PROVIDE WCO ON EXST 4" S.
- 07 RUN VENT LINES BELOW FLOOR SLAB.
- 08 NOT USED.
- 09 RUN 1/2" PEX TRAP PRIMER LINE ADJACENT TO C.I. VENT LINE TIGHT TO FOUNDATION WALL. PROVIDE GUARD AROUND BOTH LINES FROM FLOOR LEVEL TO 6'0" AFF. REFER TO DETAIL ON ARCH DWGS.
- 10 RUN PIPING ON SIDES OF COLUMN. KEEP FACE OF COLUMN CLEAR FOR INSTALLATION OF SECURITY & ALARM EQUIPMENT & APPARATUS.

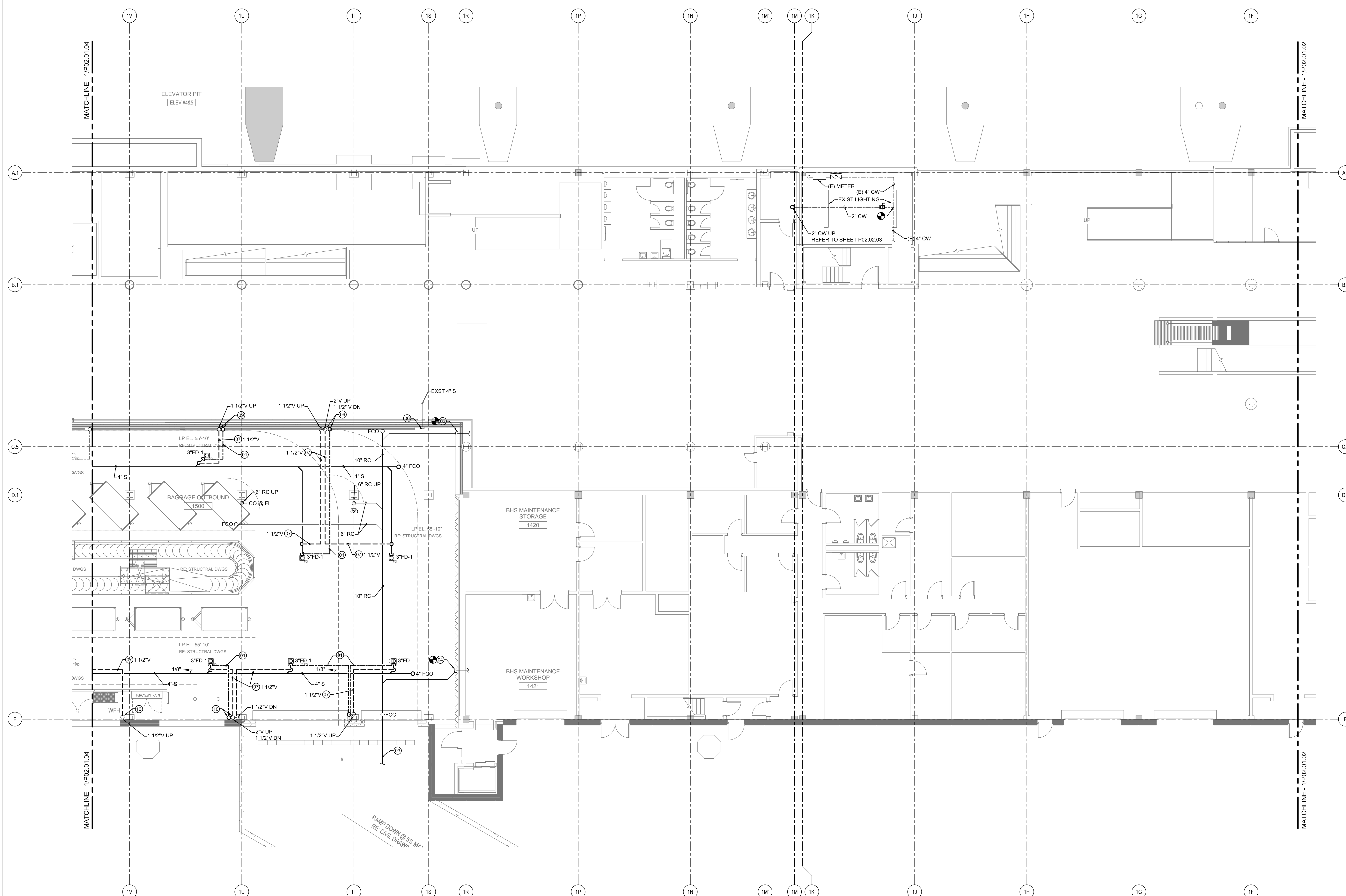
Portland International Jetport

1001 Westbrook Street
Portland, Maine 04102

Gensler
2020 K Street, NW
Suite 200
Washington, DC 20006
Telephone 202.721.5200
Facsimile 202.872.8587

oest ASSOCIATES, INC.
343 Gorham Road, South Portland, ME 04106 P: (207) 761-1770 F: (207) 774-1246 www.oest.com
engineers • architects • surveyors • construction managers

amec
343 Gorham Road, South Portland ME 04106
P: (207) 761-1770 F: (207) 774-1246 www.amec.com



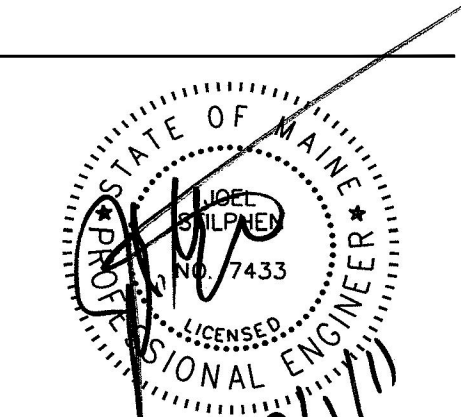
THESE DRAWINGS ARE ISSUED FOR CONSTRUCTION AND REFLECT ALL AMEC ISSUED BULLETINS AND SKETCHES.

| Issue | Date & Issue Description | By | Check |
|-------|--------------------------|-----|-------|
| 01 | 12/03/08 | KLM | JS |
| 02 | 01/23/09 | CM | JS |
| 03 | 10/26/09 | PWZ | JS |
| 04 | 11/12/09 | PWZ | JS |
| 05 | 04/23/10 | PWZ | JS |
| 06 | 07/30/10 | PWZ | JS |
| 07 | 09/01/11 | PWZ | JS |

GENERAL NOTES

- A SEE SHEET P00.00 FOR LEGEND AND GENERAL NOTES.
- B DO NOT RUN WATER OR DRAIN PIPING OVER ELECTRICAL PANELS OR SWITCH GEAR.
- C COORDINATE PLUMBING FLOOR PENETRATIONS WITH IN-FLOOR RADIANT HEAT.

Seal/Signature



Project Name
PJM Terminal Enhancement

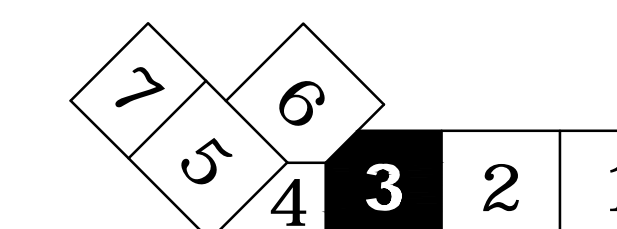
Project Number
08-0395-000
CAD File Name
T:\0330101\Sheets\P02.01.03.dwg
Description
PLUMBING PLAN - LEVEL 1 - ZONE 3

Scale
1/8" = 1'-0"

P02.01.03

©2009 Gensler

KEY PLAN



PLUMBING PLAN - LEVEL 1 - ZONE 3

SCALE: 1/8" = 1'-0"