

SHEET NOTES

Portland International Jetport

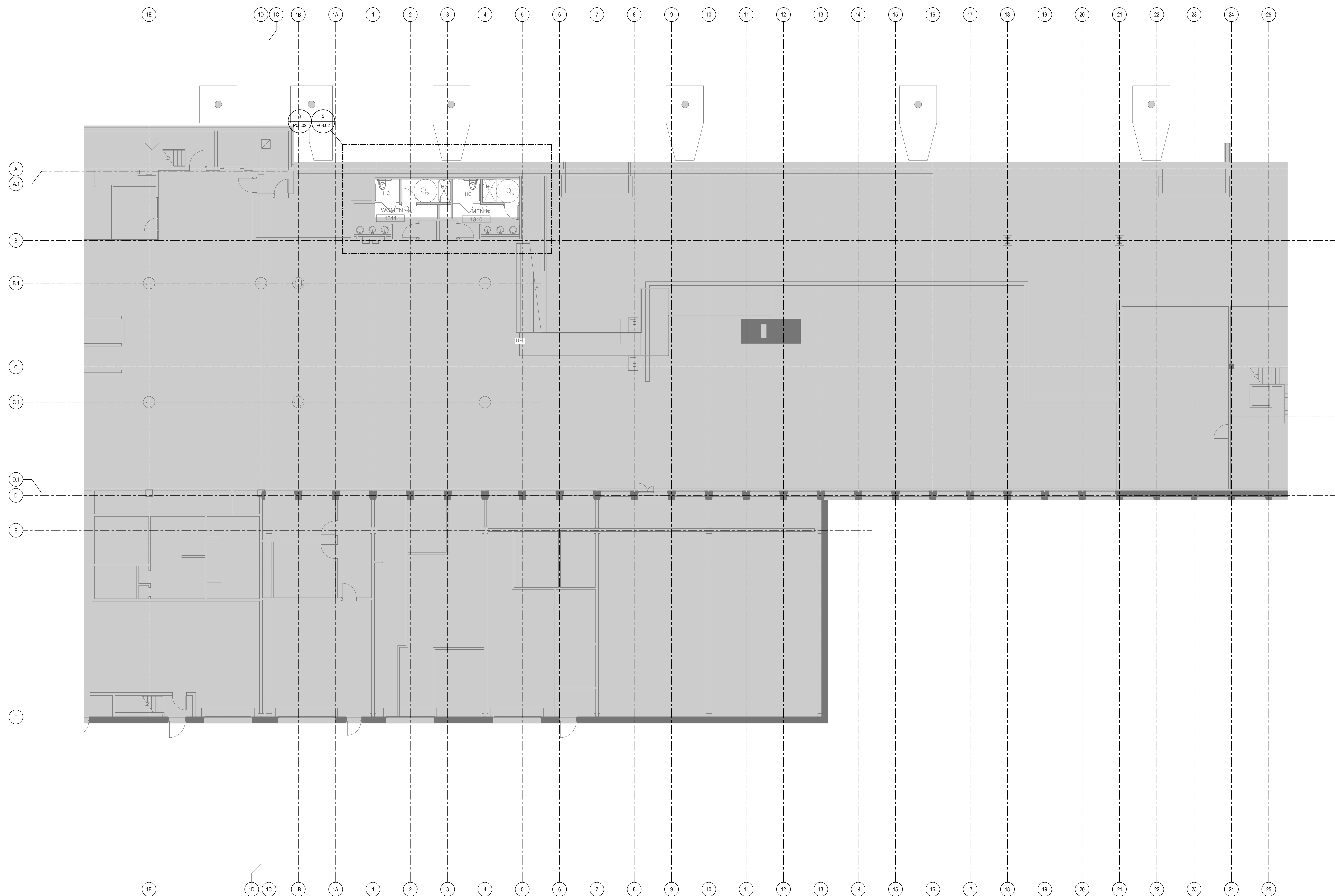
1001 Westbrook Street
Portland, Maine 04102

Gensler

2020 K Street, NW
Suite 200
Washington, DC 20006
Telephone 202.721.5200
Facsimile 202.872.8587

nest ASSOCIATES, INC.
engineers • architects • surveyors • construction managers

amec
343 Gorham Road, South Portland ME 04106
P: (207) 761-1770 F: (207) 774-1246 www.amec.com



PLUMBING PLAN - LEVEL 1 - ZONE 2

SCALE: 1/8" = 1'-0"

1

GENERAL NOTES

- A SEE SHEET P00.00 FOR LEGEND AND GENERAL NOTES.
- B DO NOT RUN WATER OR DRAIN PIPING OVER ELECTRICAL PANELS OR SWITCH GEAR.

THESE DRAWINGS ARE ISSUED FOR CONSTRUCTION AND REFLECT ALL AMEC ISSUED BULLETINS AND SKETCHES.

Issue	Date & Issue Description	By	Check
01	08/20/11	PWZ	JS
BULLETIN 116			
02	09/01/11	PWZ	JS
ISSUED FOR CONSTRUCTION			

Seal/Signature

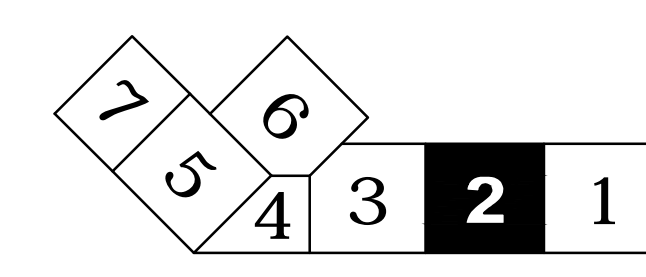
Project Name
PJM Terminal Enhancement

Project Number
08-0395-000

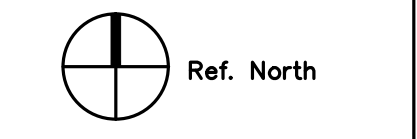
CAD File Name
T:\6330101\Sheets\P02.01.02.dwg

Description
PLUMBING PLAN - LEVEL 1 - ZONE 2

KEY PLAN



Scale
1/8" = 1'-0"



P02.01.02

©2009 Gensler