

SHEET NOTES

Portland International  
Jetport

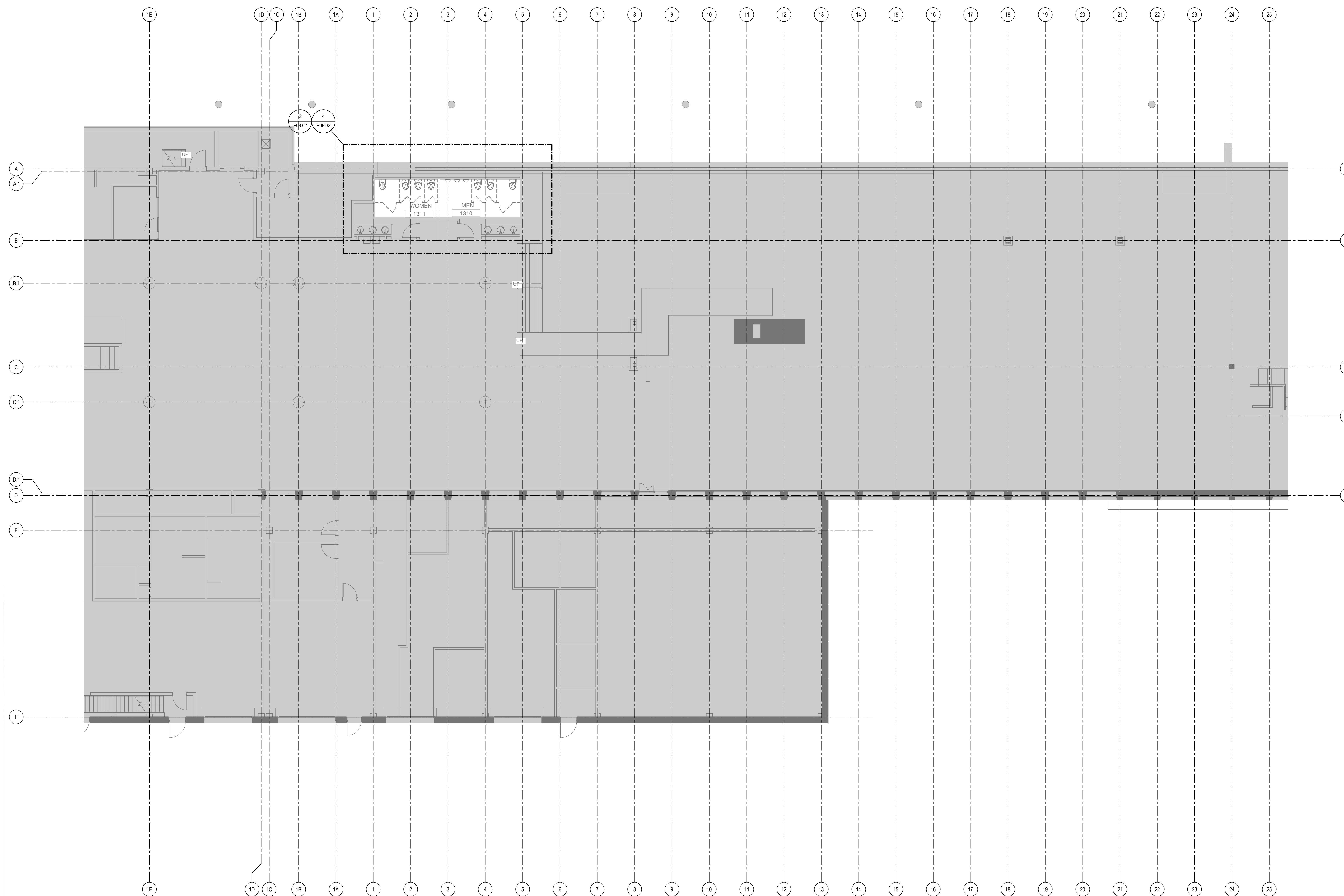
1001 Westbrook Street  
Portland, Maine 04102

**Gensler**

2020 K Street, NW  
Suite 200  
Washington, DC 20006  
Telephone 202.721.5200  
Facsimile 202.872.8587

**nest ASSOCIATES, INC.**  
343 Gorham Road, South Portland, ME 04106 P: (207) 761-1770 F: (207) 774-1246 www.nest.com  
engineers • architects • surveyors • construction managers

**amec**  
343 Gorham Road, South Portland ME 04106  
P: (207) 761-1770 F: (207) 774-1246 www.amec.com



THESE DRAWINGS ARE ISSUED FOR  
CONSTRUCTION AND REFLECT ALL AMEC  
ISSUED BULLETINS AND SKETCHES.

Issue	Date & Issue Description	By	Check
01	08/26/11	PWZ	JS
BULLETIN 116			
02	09/01/11	PWZ	JS
ISSUED FOR CONSTRUCTION			

GENERAL NOTES

A SEE SHEET P00.00 FOR LEGEND AND  
GENERAL NOTES.

\_\_\_\_\_  
Seal/Signature

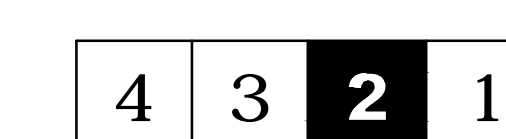
Project Name  
PJM Terminal Enhancement

Project Number  
08.0395.000

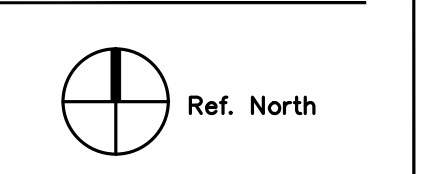
CAD File Name  
T:\6330101\Sheets\P01.01.02.dwg

Description  
PLUMBING DEMOLITION PLAN - LEVEL 1 - ZONE 2

KEY PLAN



Scale  
1/8" = 1'-0"



**P01.01.02**

©2009 Gensler