

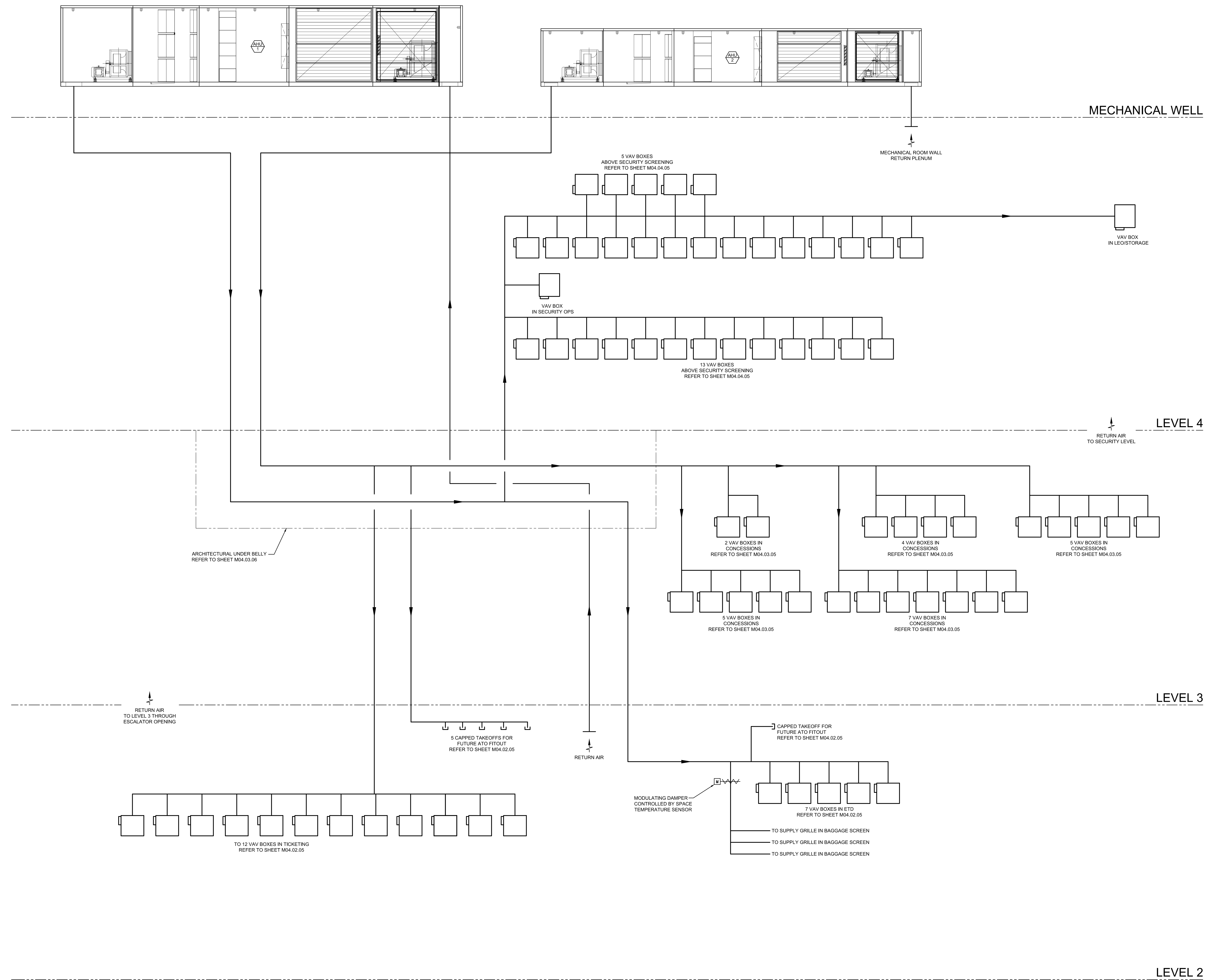
SHEET NOTES

**Portland International
Jetport**
1001 Westbrook Street
Portland, Maine 04102

Gensler
2020 K Street, NW
Suite 200
Washington, DC 20006
Telephone 202.721.5200
Facsimile 202.872.8587

nest ASSOCIATES, INC.
343 Gorham Road, South Portland, ME 04106
P: (207) 761-1770 F: (207) 774-1246 www.nest.com
engineers • architects • surveyors • construction managers

amec
343 Gorham Road, South Portland ME 04106
P: (207) 761-1770 F: (207) 774-1246 www.amec.com



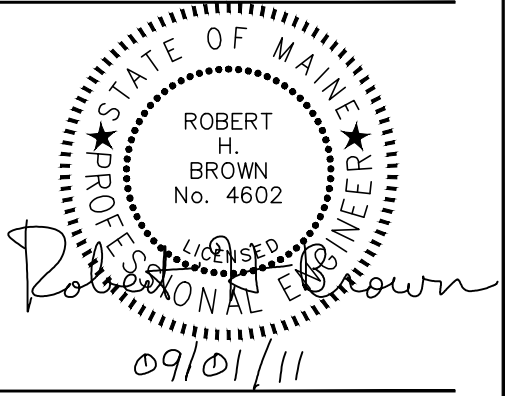
THESE DRAWINGS ARE ISSUED FOR CONSTRUCTION AND REFLECT ALL AMEC ISSUED BULLETINS AND SKETCHES.

Issue	Date & Issue Description	By	Check
01	12/03/08	PWZ	RHB
02	01/23/09	PWZ	RHB
03	10/26/09	PWZ	RHB
04	11/12/09	PWZ	RHB
05	01/25/10	PWZ	RHB
06	09/01/11	PWZ	RHB

GENERAL NOTES

A SEE SHEET M00.00 FOR LEGEND AND GENERAL NOTES.

Seal/Signature



Project Name
PJM Terminal Enhancement

Project Number
08.0395.000
CAD File Name
T:\SS30101\Sheets\M12.06.dwg
Description
AHU-1 & AHU-2 DISTRIBUTION DIAGRAM

Scale
NOT TO SCALE

M12.06

©2009 Gensler