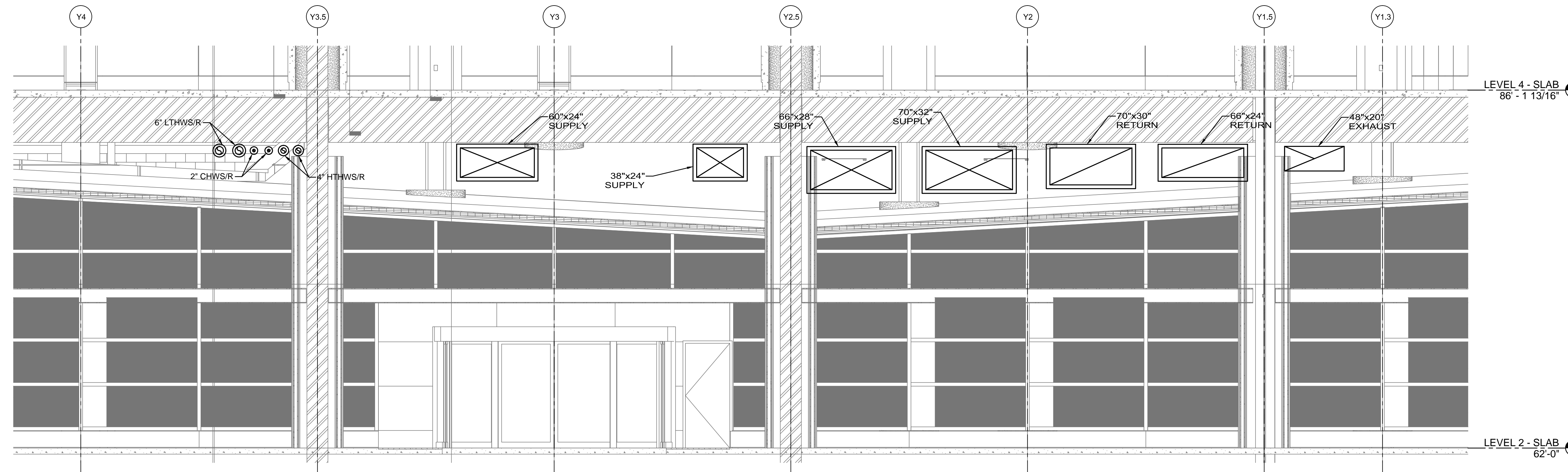


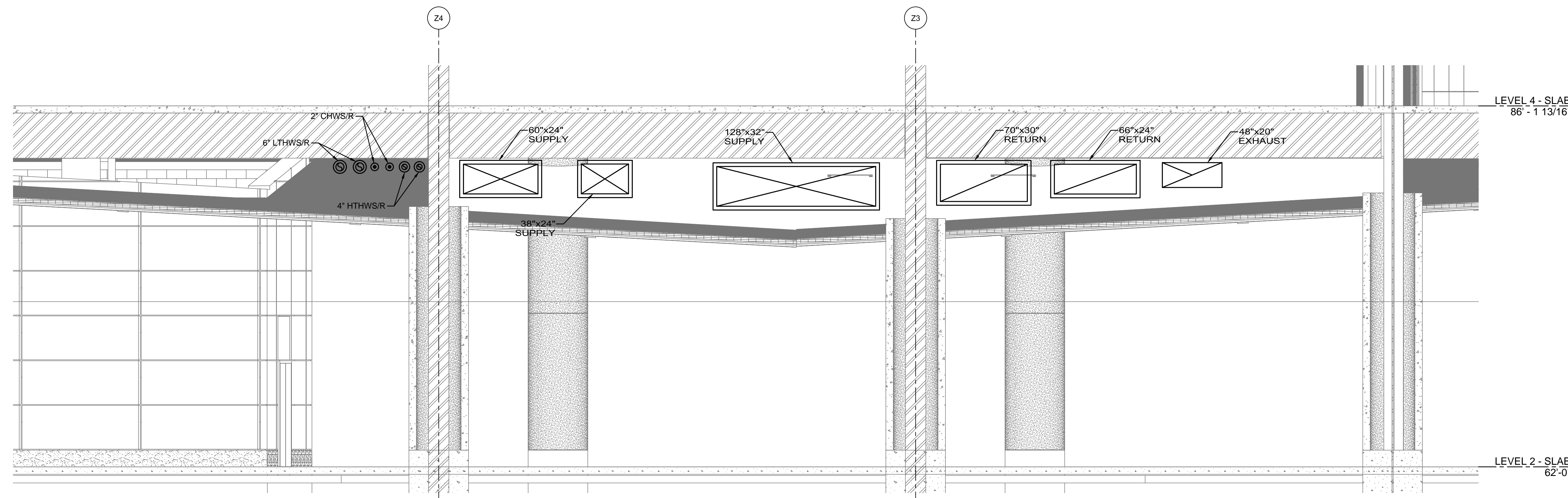
**DUCTWORK SECTION - LEVEL 4 - ZONE 6**  
SCALE: 1/4" = 1'-0"

1



**DUCTWORK SECTION - LEVEL 3 - ZONE 5**  
SCALE: 1/4" = 1'-0"

2



**DUCTWORK SECTION - LEVEL 3 - ZONE 6**  
SCALE: 1/4" = 1'-0"

3

**SHEET NOTES**

01 FURNISH AND INSTALL (6) 18"x18" PRESSURE RELIEF DOORS EQUAL TO RUSKIN PRD18 ON 32' SIDE OF SUPPLY DUCT. FABRICATE AND INSTALL A 108"x24" BYPASS DUCT BETWEEN THE SUPPLY AND RETURN DUCTS AS SHOWN. DUCT SHALL BE RATED FOR 10" W.G. PRESSURE. FURNISH AND INSTALL (5) 18"x18" HIGH PRESSURE ACCESS DOORS ON THE BYPASS DUCT FOR ACCESS TO PRESSURE RELIEF DOORS.

**Portland International Jetport**  
1001 Westbrook Street  
Portland, Maine 04102

**Gensler**

2020 K Street, NW  
Suite 200  
Washington, DC 20006  
Telephone 202.721.5200  
Facsimile 202.872.8587

**nest ASSOCIATES, INC.**  
343 Gorham Road, South Portland, ME 04106  
P: (207) 761-1770 F: (207) 774-1246 www.nest.com  
engineers • architects • surveyors • construction managers

**amec**  
343 Gorham Road, South Portland ME 04106  
P: (207) 761-1770 F: (207) 774-1246 www.amec.com

THESE DRAWINGS ARE ISSUED FOR CONSTRUCTION AND REFLECT ALL AMEC ISSUED BULLETINS AND SKETCHES.

Issue	Date & Issue Description	By	Check
01	01/23/09	PWZ	RHB
02	10/26/09	PWZ	RHB
03	08/05/10	PWZ	RHB
04	09/01/11	PWZ	RHB

**GENERAL NOTES**

A SEE SHEET M00.00 FOR LEGEND AND GENERAL NOTES.

Seal/Signature  
  
 Project Name: PWM Terminal Enhancement  
 Date: 09/01/11

Project Number: 08.0395.000  
 CAD File Name: T:\6330101\Sheets\M09.02.dwg  
 Description: MECHANICAL SECTIONS

Scale: AS NOTED

**M09.02**