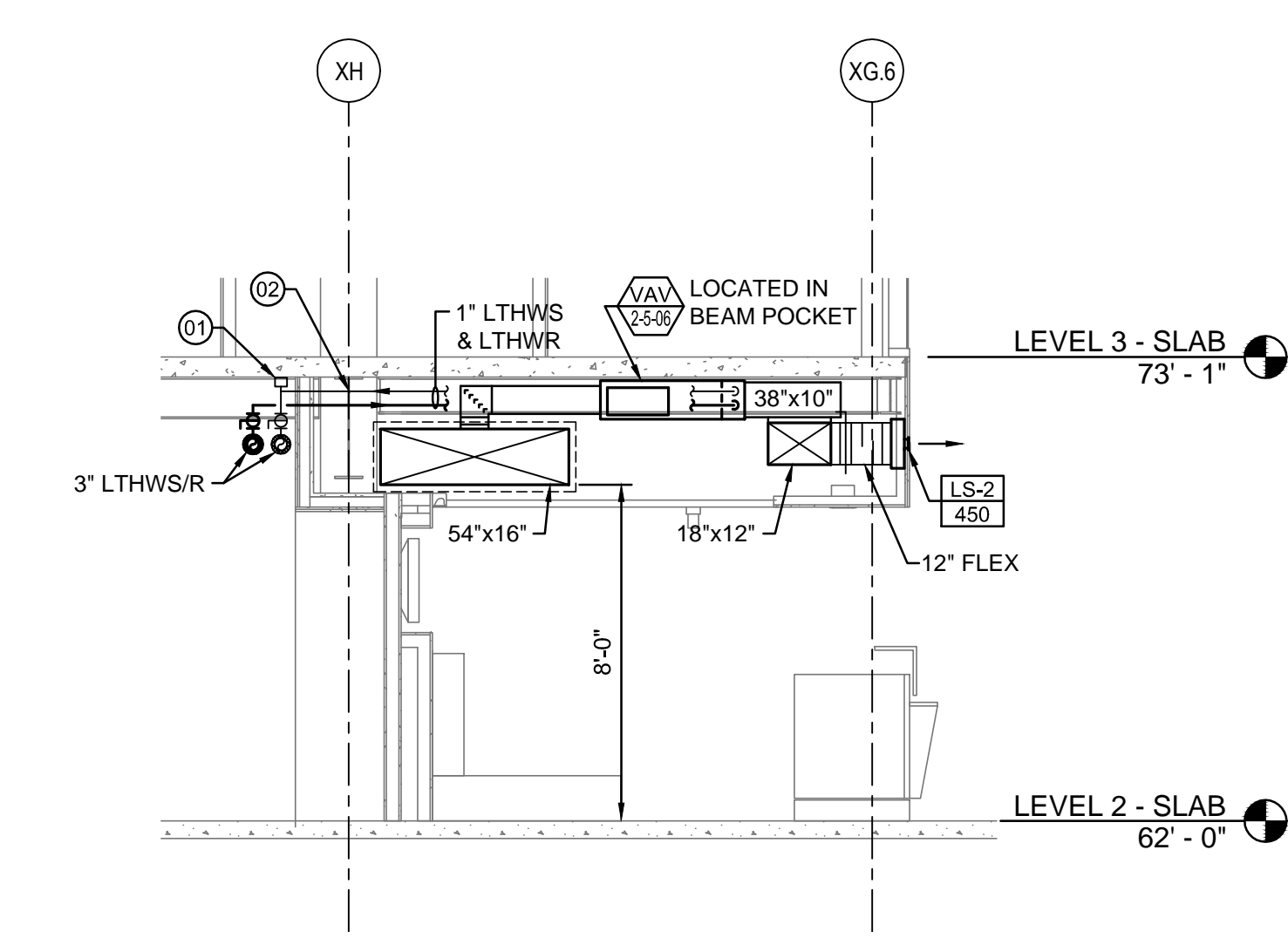


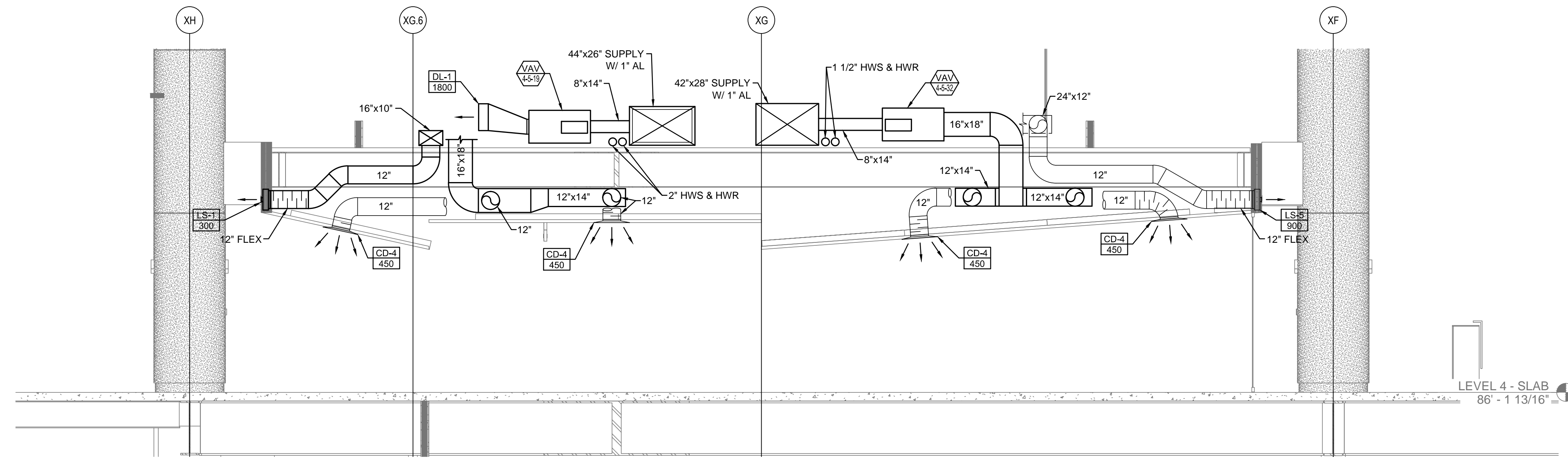
DUCTWORK SECTION - LEVEL 2 - ZONE 5
SCALE: 1/4" = 1'-0"

5



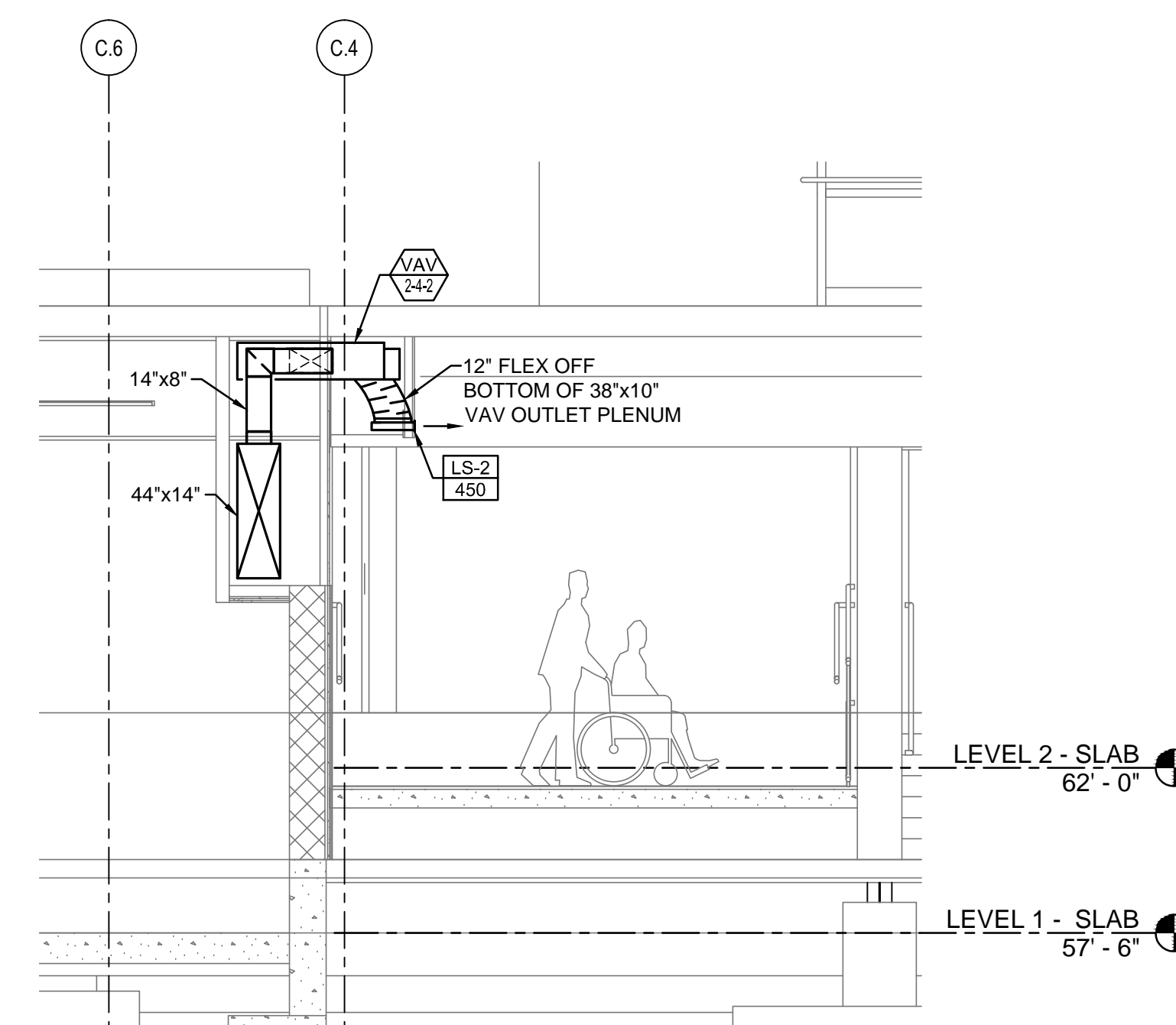
DUCTWORK SECTION - LEVEL 2 - ZONE 5
SCALE: 1/4" = 1'-0"

1



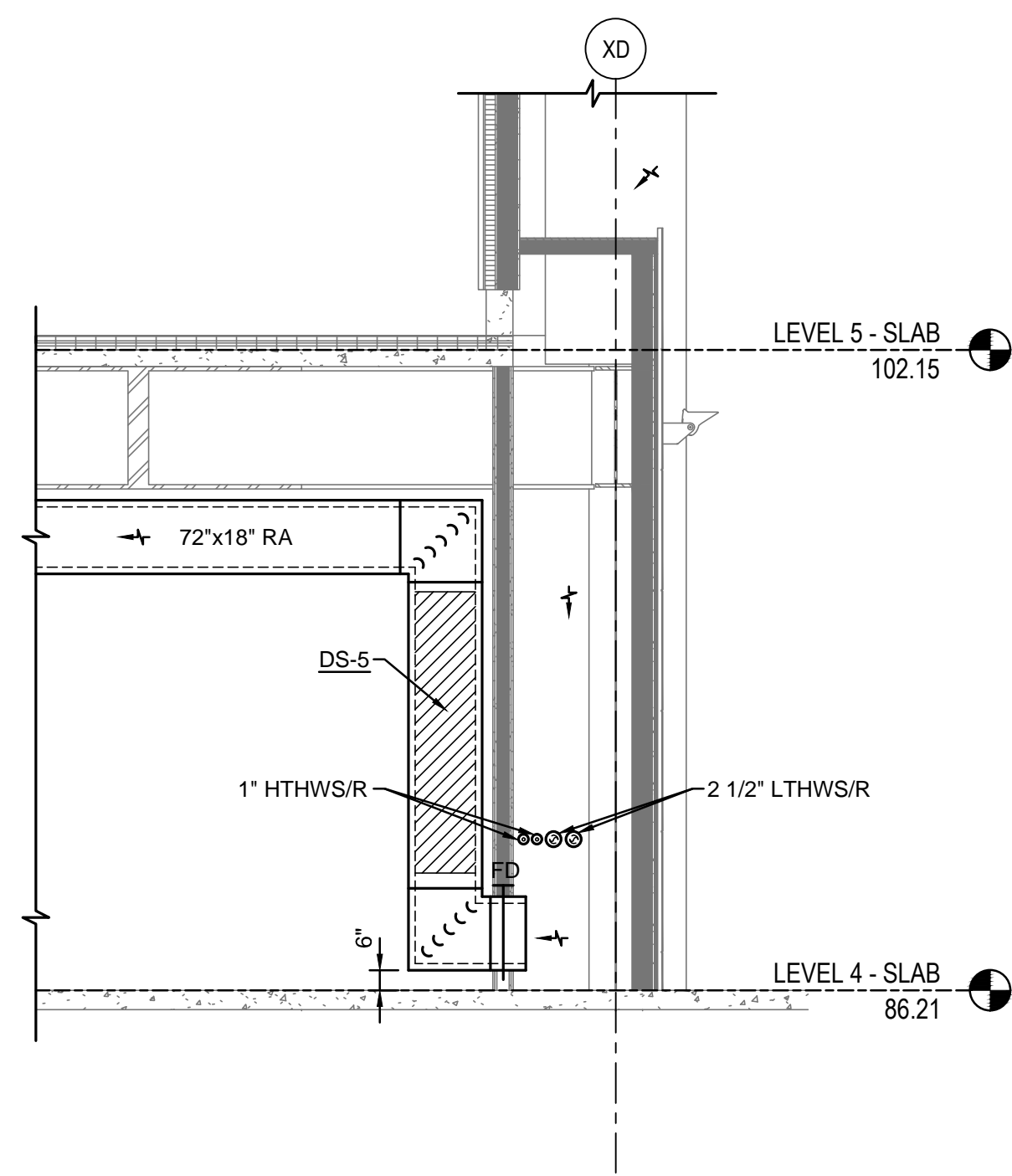
DUCTWORK SECTION - LEVEL 4 - ZONE 5
SCALE: 1/4" = 1'-0"

6



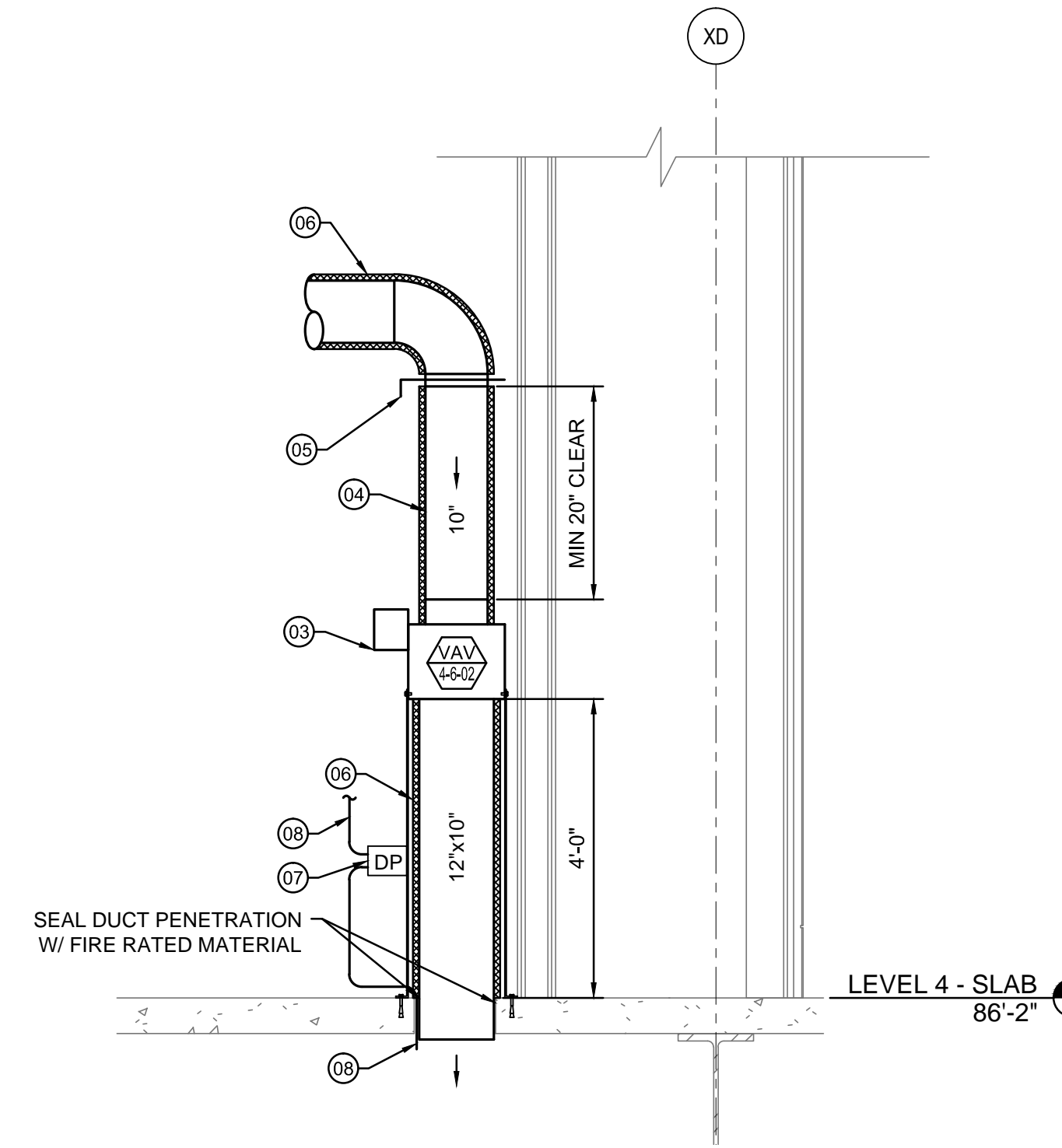
DUCTWORK SECTION @ LEVEL 2 - ZONE 3
SCALE: 1/4" = 1'-0"

2



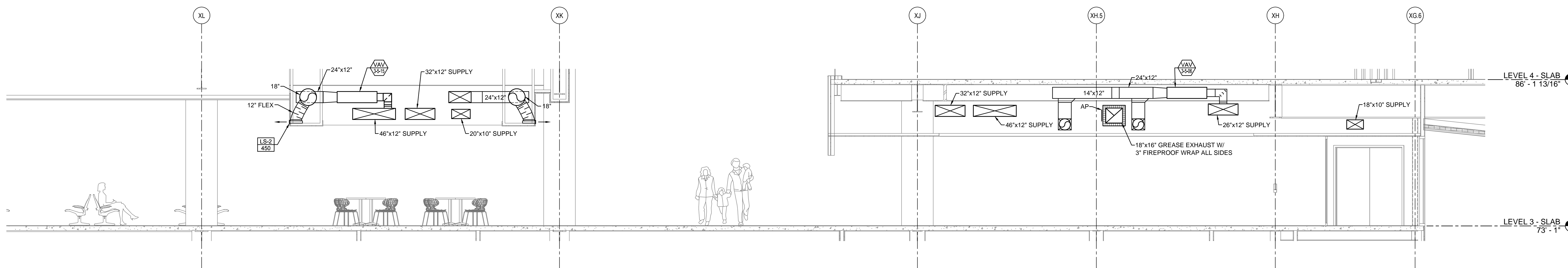
SECTION - LEVEL 4 - ZONE 6
SCALE: 1/4" = 1'-0"

7



VAV 4-6-02 SECTION - LEVEL 4 - ZONE 6
SCALE: 1/2" = 1'-0"

3



DUCTWORK SECTION - LEVEL 3 - ZONE 5
SCALE: 1/4" = 1'-0"

4

SHEET NOTES

- 01 PROVIDE AUTOMATIC AIR VENT ON RETURN PIPING AT TOP OF DROP TO MAIN. RUN VENT DISCHARGE PIPE TO MOP SINK IN JANITOR CLOSET 1517.
- 02 RUN PIPE THROUGH SLEEVE IN STRUCTURAL MEMBER. TERMINATE INSULATION AT EITHER SIDE OF PENETRATION. REFER TO STRUCTURAL DRAWINGS FOR SLEEVE LOCATIONS.
- 03 VAV BOX TRANE VCOF 10 SET AT 1400 CFM MAX. CONTROL TO MAINTAIN 0.05" WG POSITIVE PRESSURE IN UNDERBELLY WITH RESPECT TO OUTDOORS.
- 04 10"Ø METAL DUCT - 6" WG PRESSURE CLASS.
- 05 ALUMINUM BLAST GATE - BUCKLEY MODEL BGF SIZE 10.
- 06 1" DUCTWRAP INSULATION W/ ACOUSTICAL SOUND JACKET.
- 07 DIFFERENTIAL PRESSURE SWITCH EQUAL TO FANTECH FPS 10. SET AT 0.05" WG.
- 08 1/8"Ø COPPER TUBING (CONFIRM W/ DIFFERENTIAL PRESSURE SWITCH MANUFACTURER).
- RUN FROM POSITIVE PRESSURE TAP DOWN TO APPROX 3' BELOW SLAB.
- RUN FROM NEGATIVE PRESSURE TAP TO PIPING PENETRATIONS THROUGH ROOF TO AHU-2. RISE TO ABOVE ROOF AND TERMINATE W/ A DOWNTURN @ 18" ABOVE ROOF SURFACE.

GENERAL NOTES

- A SEE SHEET M00.00 FOR LEGEND AND GENERAL NOTES.

Portland International Jetport
1001 Westbrook Street
Portland, Maine 04102

Gensler

2020 K Street, NW
Suite 200
Washington, DC 20006
Telephone 202.721.5200
Facsimile 202.872.8587

AMEC ASSOCIATES, INC.
engineers • architects • surveyors • construction managers

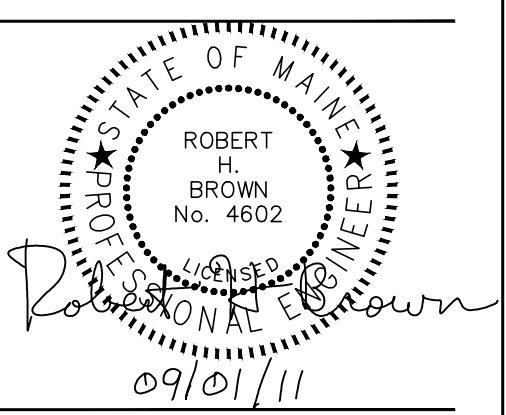
amec

343 Gorham Road, South Portland ME 04106
P: (207) 761-1770 F: (207) 774-1246 www.amec.com

THESE DRAWINGS ARE ISSUED FOR CONSTRUCTION AND REFLECT ALL AMEC ISSUED BULLETINS AND SKETCHES.

Issue	Date	Issue Description	By	Check
01	01/23/09	95% DESIGN DEVELOPMENT	PWZ	RHB
02	10/26/09	ISSUED FOR PERMIT	PWZ	RHB
2	03	ADDENDUM #2	PWZ	RHB
04	06/15/10	BULLETIN 25	PWZ	RHB
05	09/28/10	BULLETIN 43	PWZ	RHB
06	09/01/11	ISSUED FOR CONSTRUCTION	PWZ	RHB

Seal/Signature



Project Name
PJM Terminal Enhancement

Project Number
08.0395.000

CAD File Name
T:\6330101\Sheets\M09.01.dwg

Description
MECHANICAL SECTIONS

Scale
AS NOTED

M09.01

©2009 Gensler