

**SHEET NOTES**

- 01 PROVIDE CAPPED 14"x8" SUPPLY TAKEOFF FOR FUTURE INSTALLATION OF VAV BOX.
- 02 CEILING MOUNTED SUPPLY DIFFUSER FOR TRANSFER OF RETURN AIR TO FAN POWERED VAV RETURN INLET.
- 03 OUTDOOR AIR SAMPLING TUBE - 1/4" OD COPPER OR STAINLESS STEEL.
- 04 BUILDING SPACE AIR PRESSURE SAMPLING TUBE - LOCATE ABOVE CEILING. TERMINATE IN WALL BOX.

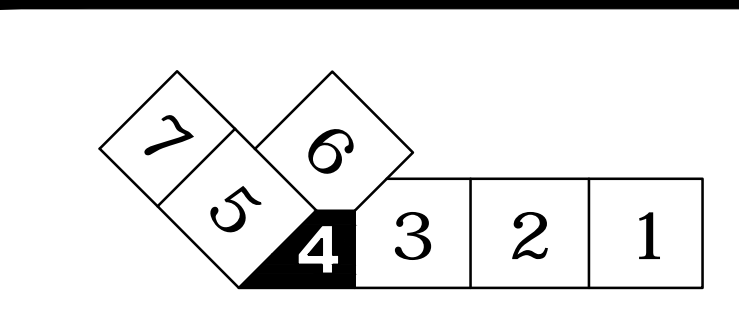
THESE DRAWINGS ARE ISSUED FOR CONSTRUCTION AND REFLECT ALL AMEC ISSUED BULLETINS AND SKETCHES.

Issue	Date & Issue Description	By	Check
01	07/11/08	PWZ	RHB
02	09/22/08	PWZ	RHB
DESIGN DEVELOPMENT			
03	12/03/08	PWZ	RHB
75% CONSTRUCTION DOCUMENTS			
04	01/23/09	PWZ	RHB
95% CONSTRUCTION DOCUMENTS			
05	10/26/09	PWZ	RHB
ISSUED FOR PERMIT			
9	06/02/05/10	PWZ	RHB
BULLETIN #6			
07	09/01/11	PWZ	RHB
ISSUED FOR CONSTRUCTION			

**GENERAL NOTES**

- A SEE SHEET M00.00 FOR LEGEND AND GENERAL NOTES.
- B SUPPLY DUCTWORK SHALL BE SMACNA 10 INCH PRESSURE CLASS FROM AIR HANDLER OUTLET CONNECTIONS TO THE FAN POWERED VAV BOXES IN ALL AREAS AND TO THE SUPPLY REGISTERS AND GRILLES IN THE BAGGAGE HANDLING SPACE. RETURN DUCTWORK SHALL BE SMACNA 10 INCH PRESSURE CLASS FROM THE INLET OPENINGS TO THE AIR HANDLER CONNECTIONS.
- C LEAK TEST ALL SUPPLY AND RETURN DUCT MAINS UPSTREAM OF TERMINAL EQUIPMENT ABOVE INACCESSIBLE CEILINGS THIS SHEET IN ACCORDANCE WITH SPEC SECTION 233113 PARAGRAPH 21.4, B.3 AND 3.9.B.1.

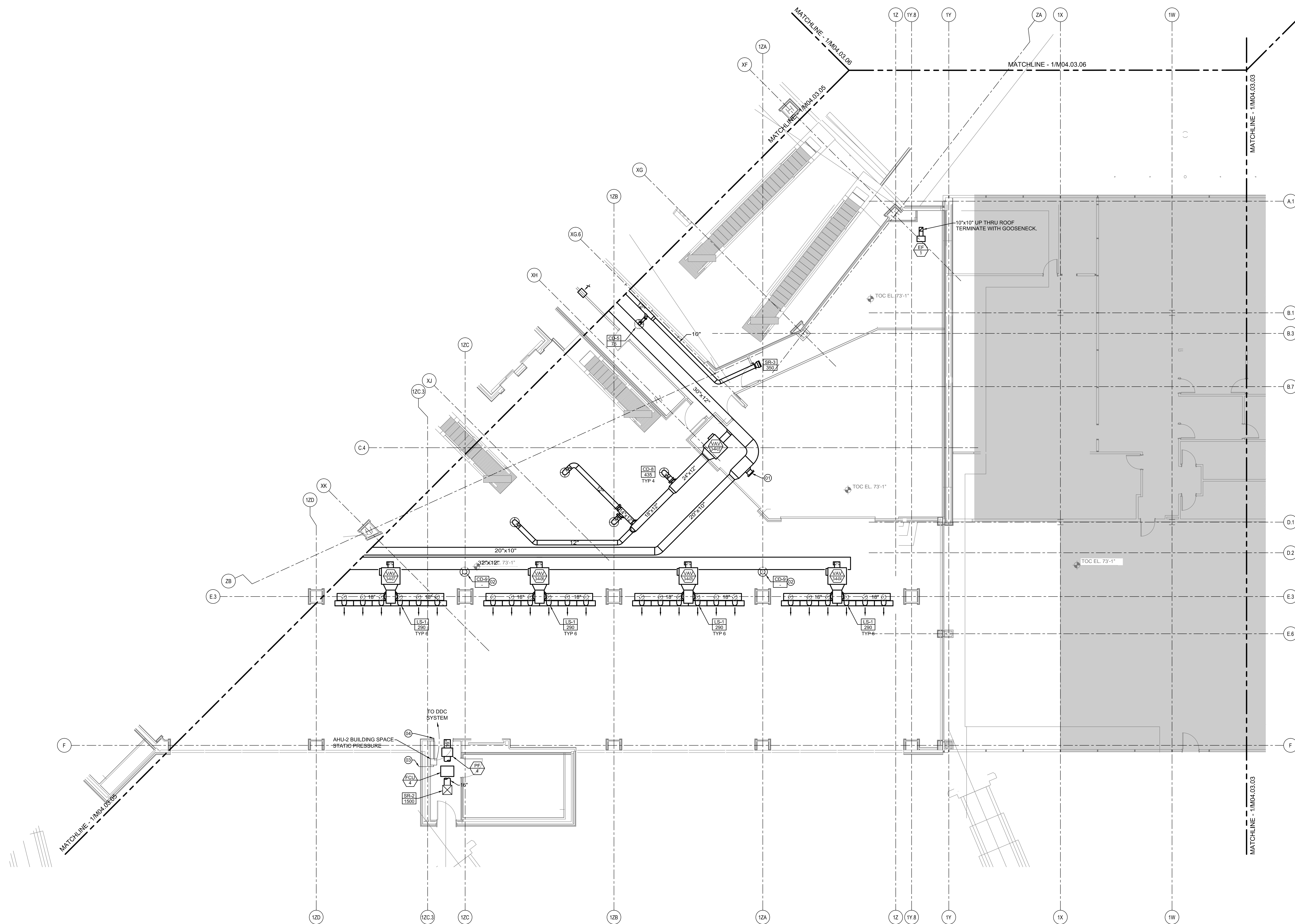
**KEY PLAN**



Scale: 1/8" = 1'-0"  
15' - 11"  
Ref. North

**M04.03.04**

©2009 Gensler



**MECHANICAL DUCTWORK PLAN - LEVEL 3 - ZONE 4**  
SCALE: 1/8" = 1'-0"