

**MECHANICAL DUCTWORK PLAN - LEVEL 3 - ZONE 2**

SCALE: 1/8" = 1'-0"

**SHEET NOTES**

- 01 REINSTALL WALL MOUNTED THERMOSTAT AND RECONNECT TO EXISTING CONTROLLED EQUIPMENT.
- 02 RECONNECT TO EXISTING SUPPLY AIR TAP LEFT FROM DEMOLITION SHOWN ON THIS SHEET. REDUCE TO 6" AND PROVIDE BALANCING DAMPER AS SHOWN.
- 03 FURNISH AND INSTALL 6" FLEX DUCT FROM VOLUME DAMPER TO INLET COLLAR ON SUPPLY DIFFUSER. RUN FLEXIBLE DUCT AS STRAIGHT AS POSSIBLE ABOVE CEILING WITH NO SAGS OR KINKS. FLEX DUCT SHALL COMPLY WITH SPEC SECTION 233300.2.15.C.

**Portland International Jetport**  
 1001 Westbrook Street  
 Portland, Maine 04102

**Gensler**  
 2020 K Street, NW  
 Suite 200  
 Washington, DC 20006  
 Telephone 202.721.5200  
 Facsimile 202.872.8587

**nest ASSOCIATES, INC.**  
 343 Gorham Road, South Portland, ME 04106  
 P: (207) 761-1770 F: (207) 774-1246 www.nest.com  
 engineers • architects • surveyors • construction managers

**amec**  
 343 Gorham Road, South Portland ME 04106  
 P: (207) 761-1770 F: (207) 774-1246 www.amec.com

THESE DRAWINGS ARE ISSUED FOR CONSTRUCTION AND REFLECT ALL AMEC ISSUED BULLETINS AND SKETCHES.

Issue	Date & Issue Description	By	Check
01	08/24/11	PWZ	RHB
BULLETIN #107			
02	09/01/11	PWZ	RHB
ISSUED FOR CONSTRUCTION			

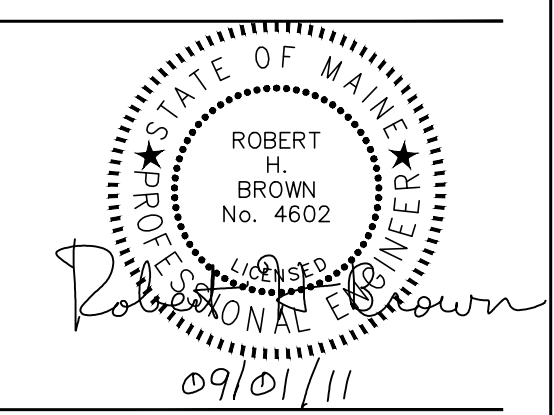
**GENERAL NOTES**

- A SEE SHEET M00.00 FOR LEGEND AND GENERAL NOTES.
- B DUCT ACCESSORIES SHALL COMPLY WITH SPEC SECTION 233300.

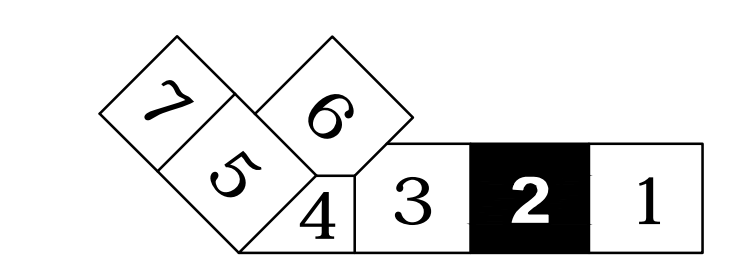
\_\_\_\_\_  
 Seal/Signature

**PROJECT INFORMATION**  
 Project Name: PWM Terminal Enhancement  
 Project Number: 08-0395-000  
 CAD File Name: T:\6333101\Sheets\M04.03.02.dwg  
 Description: MECHANICAL DUCTWORK PLAN - LEVEL 3 - ZONE 2

\_\_\_\_\_  
 Date: 09/01/11



**KEY PLAN**



Scale: 1/8" = 1'-0"

**M04.03.02**

©2009 Gensler