

SHEET NOTES

Portland International  
Jetport  
1001 Westbrook Street  
Portland, Maine 04102

**Gensler**  
2020 K Street, NW  
Suite 200  
Washington, DC 20006  
Telephone 202.721.5200  
Facsimile 202.872.8587

**oest ASSOCIATES, INC.**  
343 Gorham Road, South Portland, ME 04106  
P: (207) 761-1770 F: (207) 774-1246 www.oest.com  
engineers • architects • surveyors • construction managers

**amec**  
343 Gorham Road, South Portland ME 04106  
P: (207) 761-1770 F: (207) 774-1246 www.amec.com

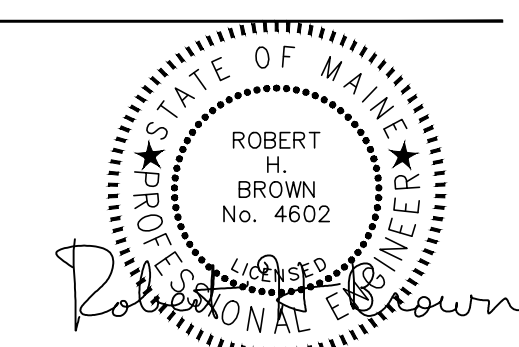
THESE DRAWINGS ARE ISSUED FOR CONSTRUCTION AND REFLECT ALL AMEC ISSUED BULLETINS AND SKETCHES.

Issue	Date & Issue Description	By	Check
01	07/11/08	PWZ	RHB
02	09/22/08	PWZ	RHB
03	12/03/08	PWZ	RHB
04	01/23/09	PWZ	RHB
05	10/26/09	PWZ	RHB
06	11/12/09	PWZ	RHB
07	01/25/10	PWZ	RHB
08	09/01/11	PWZ	RHB

GENERAL NOTES

- A SEE SHEET M00.00 FOR LEGEND AND GENERAL NOTES.
- B SUPPLY DUCTWORK SHALL BE SMACNA 10 INCH PRESSURE CLASS FROM AIR HANDLER OUTLET CONNECTIONS TO THE FAN POWERED VAV BOXES IN ALL AREAS AND TO THE SUPPLY REGISTERS AND GRILLES IN THE BAGGAGE HANDLING SPACE. RETURN DUCTWORK SHALL BE SMACNA 10 INCH PRESSURE CLASS FROM THE INLET OPENINGS TO THE AIR HANDLER CONNECTIONS.

Seal/Signature



Project Name  
PJM Terminal Enhancement

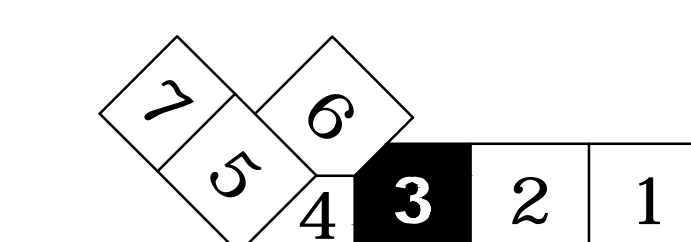
Project Number  
08.0395.000

CAD File Name  
T:\6330101\Sheets\M04.02.03.dwg

Description  
MECHANICAL DUCTWORK PLAN - LEVEL 2 - ZONE 3

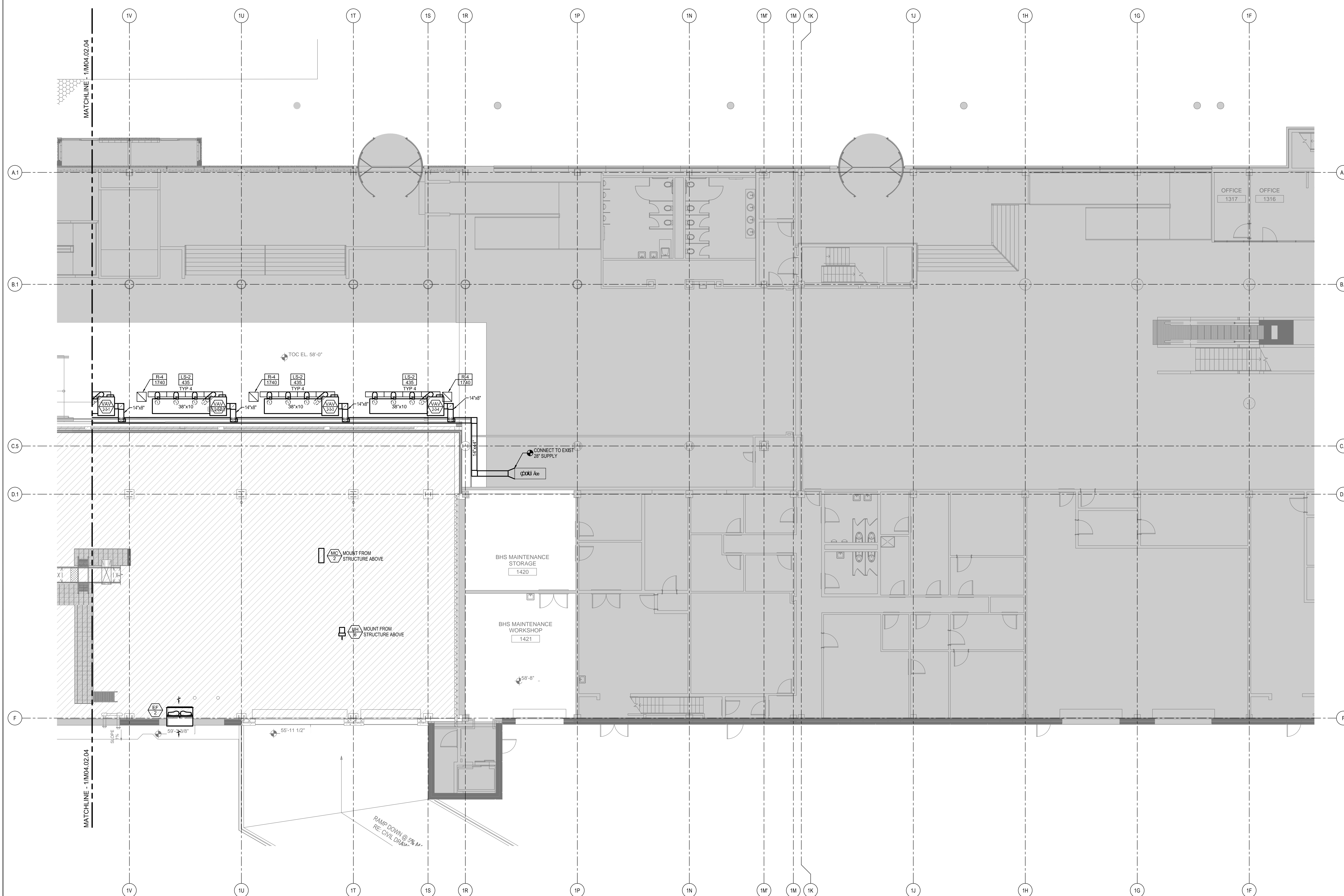
Scale  
1/8" = 1'-0"

KEY PLAN



M04.02.03

©2009 Gensler



MECHANICAL DUCTWORK PLAN - LEVEL 2 - ZONE 3

SCALE: 1/8" = 1'-0"