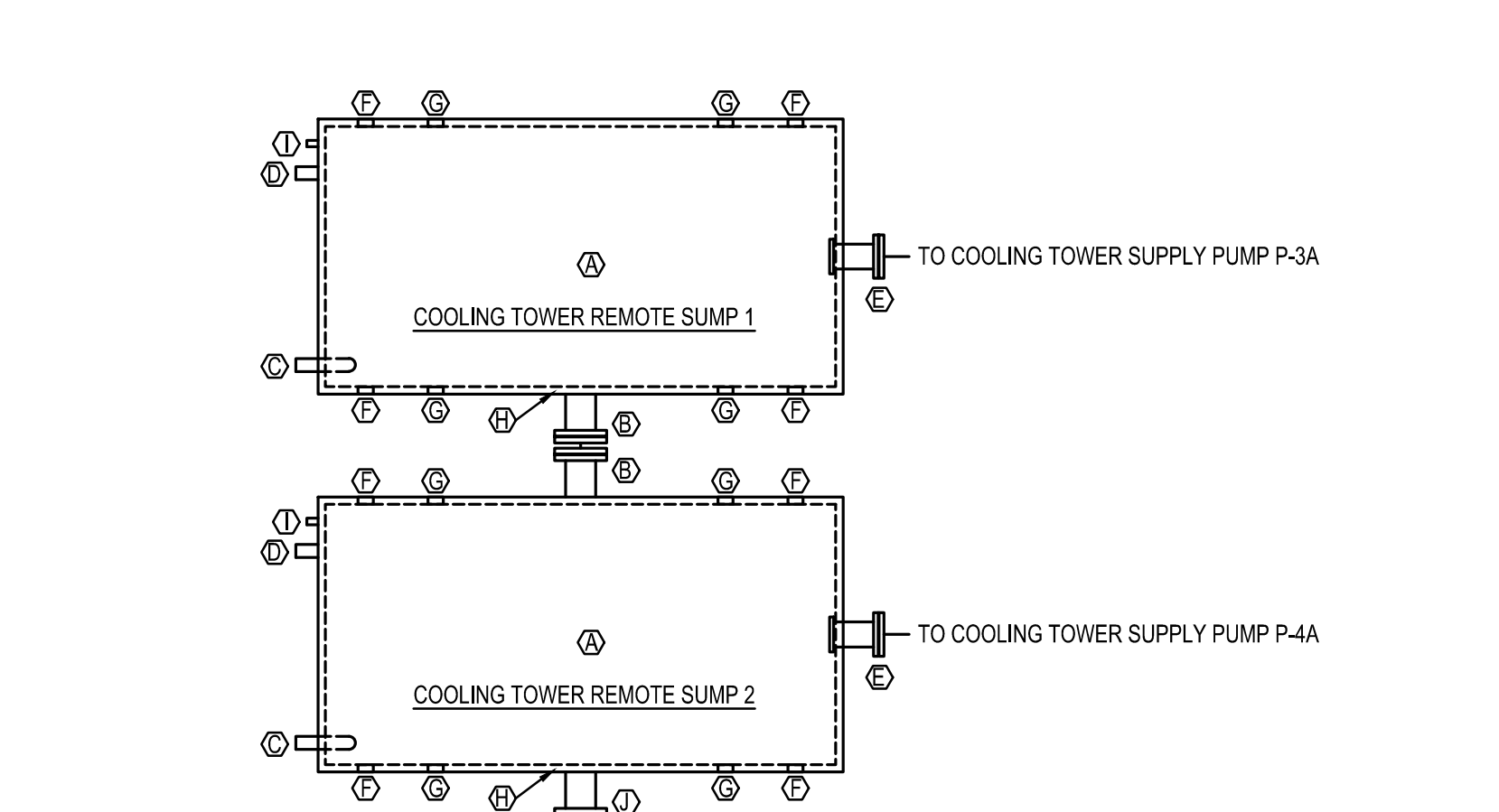
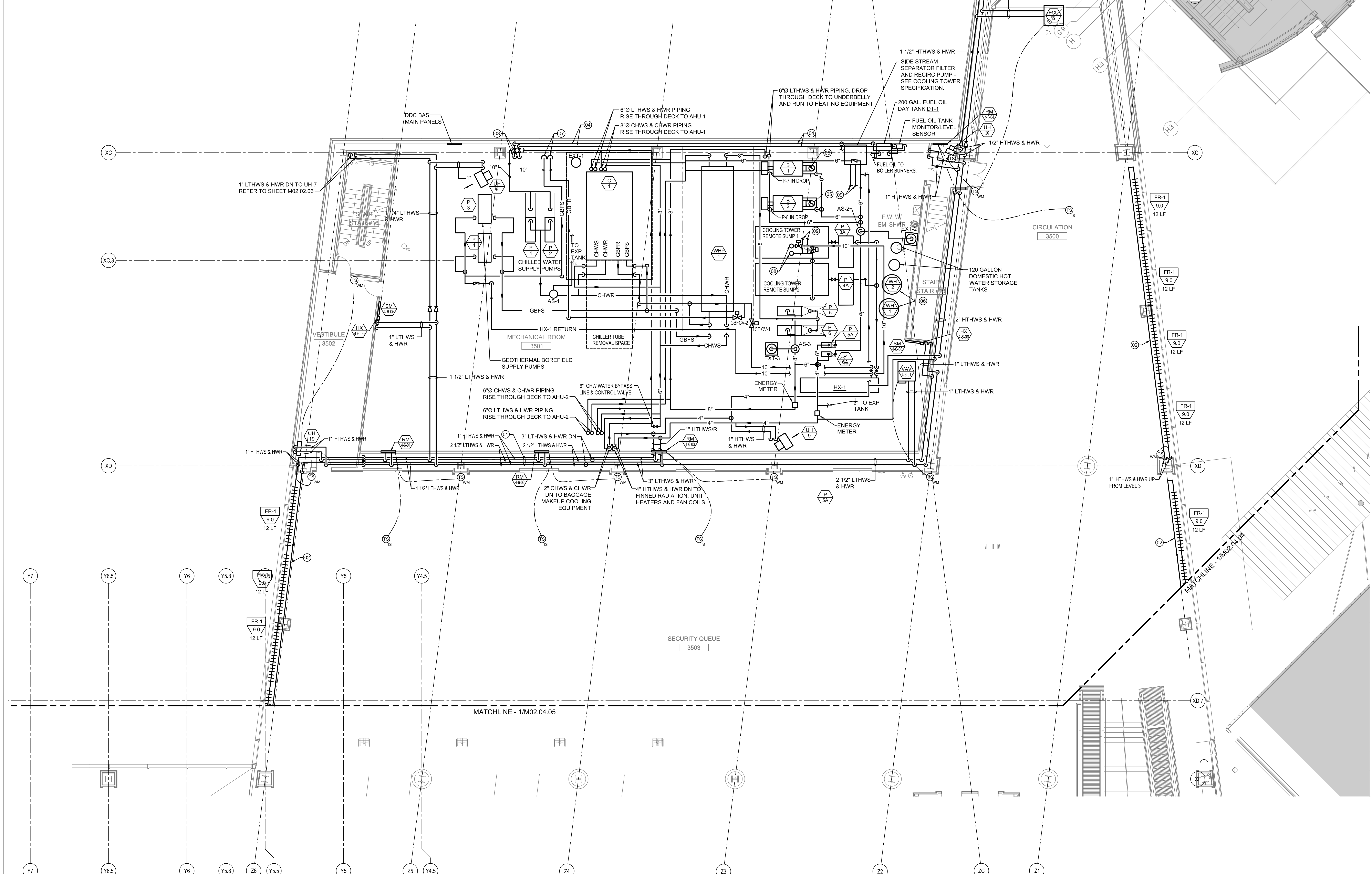


WATER TO WATER HEAT PUMP PIPING DETAIL
SCALE: NONE



- ① FRP TANK EDWARDS FIBERGLAS OR APPROVED EQUAL TANK DIMENSIONS 15' LONG X 6'-4" WIDE X 6" HIGH WITH FLAT BOTTOM AND BOLTED RIM COVER WITH 4" RIM FLANGE. SET TANK ON 12" HIGH CONCRETE CURB.
- ② 12" FLANGE NOZZLE. SET CENTERLINE OF NOZZLE AT 10" ABOVE TANK BOTTOM. FIELD FURNISH AND INSTALL MATCHING FLANGES AND 12" DASH CROSS CONNECTION PIPES.
- ③ 3" FRP NPT FULL COUPLING WITH 90 DEG ELL. FIELD FURNISH AND INSTALL 3" SCH 40 BLACK STEEL OVERFLOW DRAIN LINE FROM COUPLING TO NEAREST FLOOR DRAIN AND TERMINATE. COORDINATE DRAIN PIPE ROUTING WITH JETPORT MAINTENANCE PERSONNEL.
- ④ 3" FRP NPT FULL COUPLING. FIELD FURNISH AND INSTALL 3" SCH 40 BLACK STEEL VENT LINE WITH 90 DEG ELL AND 12" SPOOL PIECE TERMINATE WITH COSENSEK FACING DOWN.
- ⑤ 12" FLANGE NOZZLE WITH VORTEX BREAKER AND SCREEN. SET CENTERLINE OF NOZZLE AT 10" ABOVE TANK BOTTOM. FIELD FURNISH AND INSTALL 12" LUG STYLE BUTTERFLY VALVE AND COOLING TOWER SUPPLY PUMP. SEE PLAN VIEW THIS SHEET.
- ⑥ GALVANIZED HOLD DOWN LUGS.
- ⑦ GALVANIZED LIFTING LUGS.
- ⑧ 3" SQUARE STEEL TANK RIB.
- ⑨ 2" FRP NPT FULL COUPLING AT TANK BOTTOM. FIELD FURNISH AND INSTALL 2" FULL PORT BALL VALVE AND SCH 40 BLACK STEEL TANK DRAIN LINE FROM COUPLING TO NEAREST FLOOR DRAIN AND TERMINATE. COORDINATE DRAIN PIPE ROUTING WITH JETPORT MAINTENANCE PERSONNEL.
- ⑩ 10" FLANGE NOZZLE. SET CENTERLINE OF NOZZLE AT 10" ABOVE TANK BOTTOM. FIELD FURNISH AND INSTALL 10" LUG STYLE BUTTERFLY VALVE AND PIPE 10" STAINLESS STEEL RISER TO COOLING TOWER DRAIN. SEE PLAN VIEW THIS SHEET.

COOLING TOWER REMOTE SUMPS DETAILS-PLAN VIEW
SCALE: NONE



MECHANICAL PIPING PLAN - LEVEL 4 - ZONE 6
SCALE: 1/8" = 1'-0"

SHEET NOTES

- 01 RUN PIPE TO AVOID UPPER WALL RETURN PLENUM.
- 02 RUN HTHWS/HWR CONCEALED IN FINNED RADIATION ENCLOSURE.
- 03 1 1/2" FUEL OIL SUPPLY AND 1 1/2" RETURN PIPING RISERS DN THROUGH FLOOR.
- 04 1 1/2" DAY TANK FUEL OIL SUPPLY & 1 1/2" RETURN. RUN ALONG NORTH MECH ROOM WALL. COORDINATE W/ RAIN LEADER PLUMBING SHOWN ON SHEET P02.04.06.
- 05 REFER TO SHEET M04.04.06 FOR BOILER VENTING.
- 06 FURNISH AND INSTALL TWO 16" DIAMETER DOUBLE WALL INSULATED POSITIVE PRESSURE FLUES AT WATER HEATERS. CONNECT FLUES TOGETHER AND INCREASE TO 22 INCH DIAMETER HORIZONTAL FLUE. RUN HORIZONTALLY AND CONNECT TO 26 INCH RISER NOTED IN 5 ABOVE.
- 07 10" GEOTHERMAL SUPPLY AND RETURN PIPING. RUN TO WALL AND DROP THROUGH FLOOR. FOR CONTINUATION SEE DRAWING M02.02.06.
- 08 10" CONDENSER SUPPLY & RETURN RISE TO COOLING TOWER.
- 09 6" SUPPLY & 4" TR TO/FROM SIDESTREAM SEPARATOR.

Portland International Jetport
1001 Westbrook Street
Portland, Maine 04102

Gensler

2020 K Street, NW
Suite 200
Washington, DC 20006
Telephone 202.721.5200
Facsimile 202.872.8587

oest ASSOCIATES, INC.
343 Gophers Road, South Portland, ME 04106
P: (207) 761-1770 F: (207) 774-1246 www.oest.com
engineers • architects • surveyors • construction managers

amec

343 Gophers Road, South Portland ME 04106
P: (207) 761-1770 F: (207) 774-1246 www.amec.com

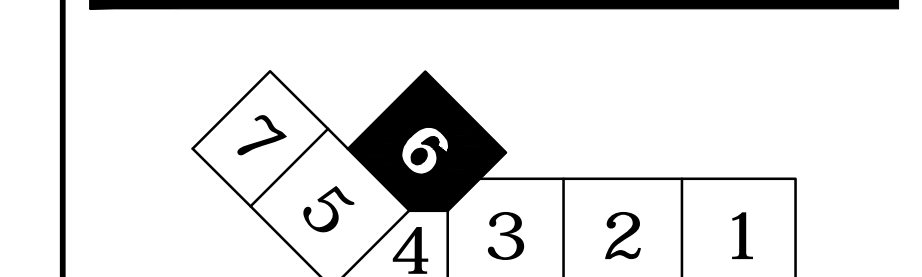
THESE DRAWINGS ARE ISSUED FOR CONSTRUCTION AND REFLECT ALL AMEC ISSUED BULLETINS AND SKETCHES.

Issue	Date	Issue Description	By	Check
01	07/11/08	SCHEMATIC DESIGN	PWZ	RHB
02	09/22/08	DESIGN DEVELOPMENT	PWZ	RHB
03	12/03/08	75% CONSTRUCTION DOCUMENTS	PWZ	RHB
04	01/23/09	95% CONSTRUCTION DOCUMENTS	PWZ	RHB
05	10/26/09	ISSUED FOR PERMIT	PWZ	RHB
2	06	11/12/09	PWZ	RHB
		ADDENDUM #2		
7	07	01/12/10	PWZ	RHB
10	10	05/03/10	PWZ	RHB
11	11	05/21/10	PWZ	RHB
10	10	08/05/10	PWZ	RHB
11	11	08/01/11	PWZ	RHB
		ISSUED FOR CONSTRUCTION		

GENERAL NOTES

- A SEE SHEET M00.00-GT FOR LEGEND AND GENERAL NOTES.
- B MAINTAIN 18" MIN CLEARANCE FROM RADIANT TUBING TO FLOOR DRAINS, COLUMN WRAPS, PLUMBING FIXTURES, EQUIPMENT SUPPORTS, AND PIPING AT FLOORS.
- C RUN ALL PIPING HIGH AS POSSIBLE WITHIN BEAM POCKET TO AVOID CEILING MOUNTED EQUIPMENT & FIXTURES.
- D PROVIDE HOUSEKEEPING PAD MIN 6" LARGER THAN EQUIPMENT ON ALL SIDES. SEE DETAIL 3 ON SHEET S12.02

KEY PLAN



Seal/Signature

ROBERT BRYAN
No. 4602
09/01/11

Project Name
PJM Terminal Enhancement

Project Number
08.0395.000
CAD File Name
T:\6330101\Sheet\M02.04.06.dwg
Description
MECHANICAL PIPING PLAN - LEVEL 4 - ZONE 6

Scale
1/8" = 1'-0"

M02.04.06

©2009 Gensler