

MECHANICAL PIPING PLAN - LEVEL 3 - ZONE 6
SCALE: 1/8" = 1'-0"

SHEET NOTES

- 01 PIPE INSULATION THICKNESS IN UNDERBELLY AREA SHALL EQUAL ASHRAE ENERGY STANDARD PLUS 1".
- 02 TEMPERATURE SENSOR-FURNISHED BY MAINE CONTROLS. IN ORDER TO FACILITATE FUTURE REPLACEMENT, THE SENSORS WILL BE DROPPED DOWN INTO THE MIDDLE OF THE INTERSTITIAL SPACE. WIRE TO DDC SYSTEM AND SET TO ALARM TO DDC SYSTEM WHEN TEMPERATURE DROPS TO SETPOINT OF 38°F.

Portland International Jetport

1001 Westbrook Street
Portland, Maine 04102

Gensler

2020 K Street, NW
Suite 200
Washington, DC 20006
Telephone 202.721.5200
Facsimile 202.872.8587

oest ASSOCIATES, INC.
343 Gorham Road, South Portland, ME 04106 P: (207) 761-1770 F: (207) 774-1246 www.oest.com
engineers • architects • surveyors • construction managers

amec
343 Gorham Road, South Portland ME 04106
P: (207) 761-1770 F: (207) 774-1246 www.amec.com

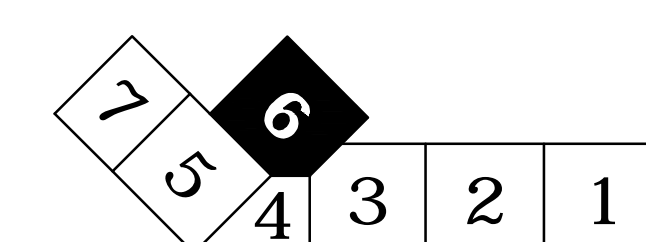
THESE DRAWINGS ARE ISSUED FOR CONSTRUCTION AND REFLECT ALL AMEC ISSUED BULLETINS AND SKETCHES.

Issue	Date & Issue Description	By	Check
01	07/11/08	PWZ	RHB
02	09/22/08	PWZ	RHB
SCHEMATIC DESIGN			
DESIGN DEVELOPMENT			
03	12/03/08	PWZ	RHB
75% CONSTRUCTION DOCUMENTS			
04	01/23/09	PWZ	RHB
95% CONSTRUCTION DOCUMENTS			
05	10/26/09	PWZ	RHB
ISSUED FOR PERMIT			
2	06 11/12/09	PWZ	RHB
ADDENDUM #2			
07	01/12/10	PWZ	RHB
BULLETIN #1			
08	05/03/10	PWZ	RHB
BULLETIN 10			
09	05/21/10	PWZ	RHB
BULLETIN 4C			
10	08/05/10	PWZ	RHB
BULLETIN 33			
11	09/01/11	PWZ	RHB
ISSUED FOR CONSTRUCTION			

GENERAL NOTES

- A SEE SHEET M00.00 FOR LEGEND AND GENERAL NOTES.
- B MAINTAIN 18" MIN CLEARANCE FROM RADIANT TUBING TO FLOOR DRAINS, COLUMN WRAPS, PLUMBING FIXTURES, EQUIPMENT SUPPORTS, AND PIPING AT FLOORS.
- C RUN ALL PIPING HIGH AS POSSIBLE WITHIN BEAM POCKET TO AVOID CEILING MOUNTED EQUIPMENT & FIXTURES.

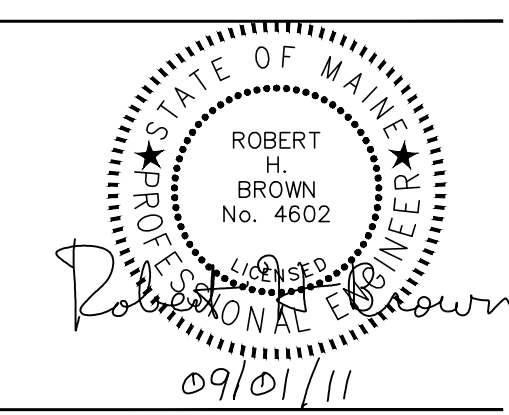
KEY PLAN



Scale: 1/8" = 1'-0"

M02.03.06

©2009 Gensler



Project Name: P1W Terminal Enhancement
Project Number: 08.0395.000
CAD File Name: T:\6330101\Sheet\M02.03.06.dwg
Description: MECHANICAL PIPING PLAN - LEVEL 3 - ZONE 6

