

SHEET NOTES

01 RUN HTHWS/HWR CONCEALED IN FINED RADIATION ENCLOSURE.

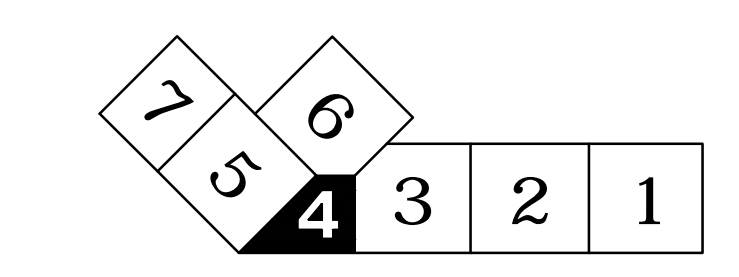
THESE DRAWINGS ARE ISSUED FOR CONSTRUCTION AND REFLECT ALL AMEC ISSUED BULLETINS AND SKETCHES.

Issue	Date & Issue Description	By	Check
01	07/11/08	PWZ	RHB
02	09/22/08	PWZ	RHB
03	12/03/08	PWZ	RHB
04	01/23/09	PWZ	RHB
05	10/26/09	PWZ	RHB
06	11/12/09	PWZ	RHB
07	05/21/10	PWZ	RHB
08	09/01/11	PWZ	RHB

GENERAL NOTES

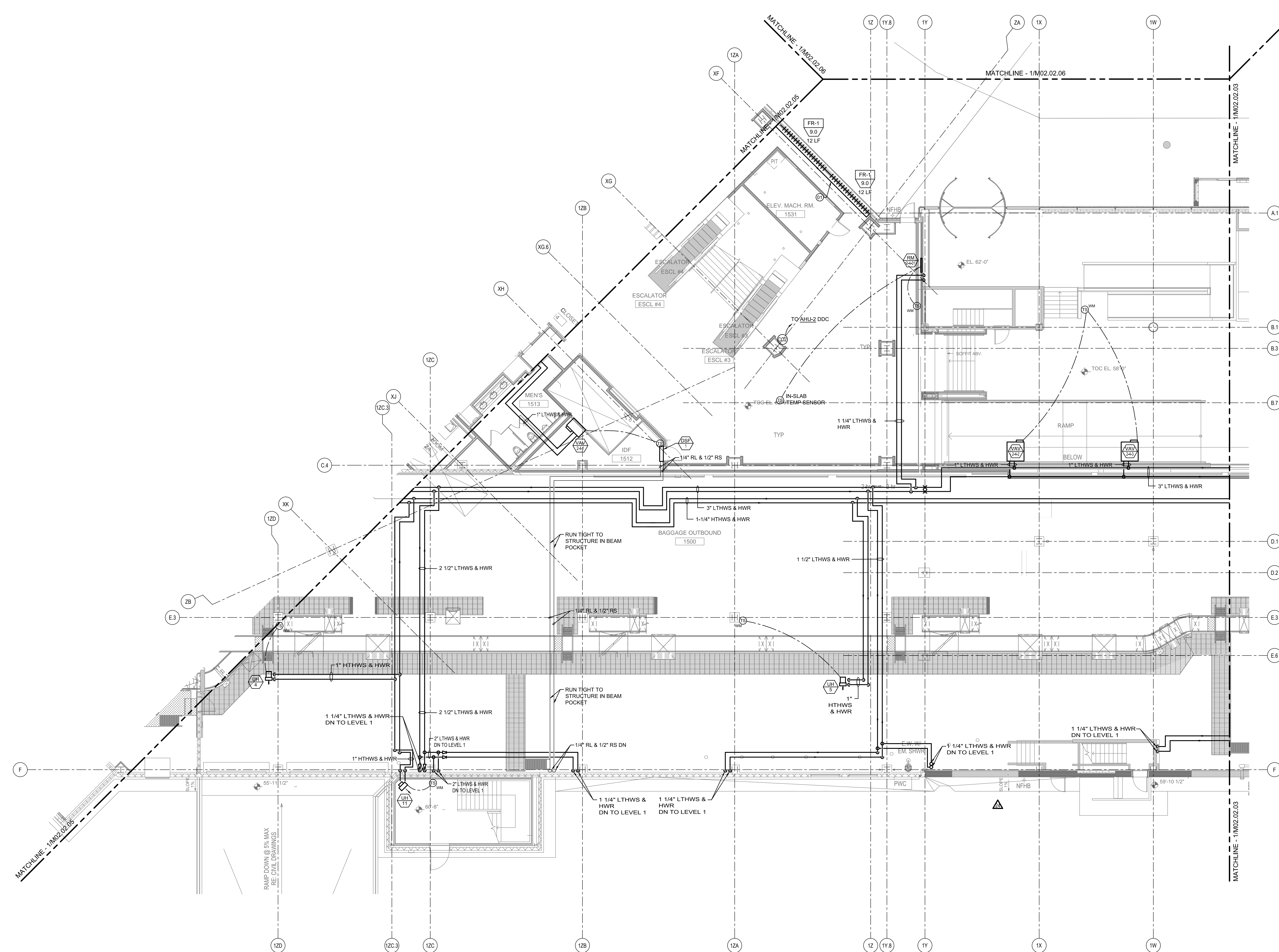
- A SEE SHEET M00.00 FOR LEGEND AND GENERAL NOTES.
- B MAINTAIN 18" MIN CLEARANCE FROM RADIANT TUBING TO FLOOR DRAINS, COLUMN WRAPS, PLUMBING FIXTURES, EQUIPMENT SUPPORTS, AND PIPING AT FLOORS.
- C RUN ALL PIPING HIGH AS POSSIBLE WITHIN BEAM POCKET TO AVOID BAGGAGE HANDLING EQUIPMENT.

KEY PLAN



M02.02.04

C2009 Gensler



MECHANICAL PIPING PLAN - LEVEL 2 - ZONE 4
SCALE: 1/8" = 1'-0"