

SHEET NOTES

**Portland International
Jetport**

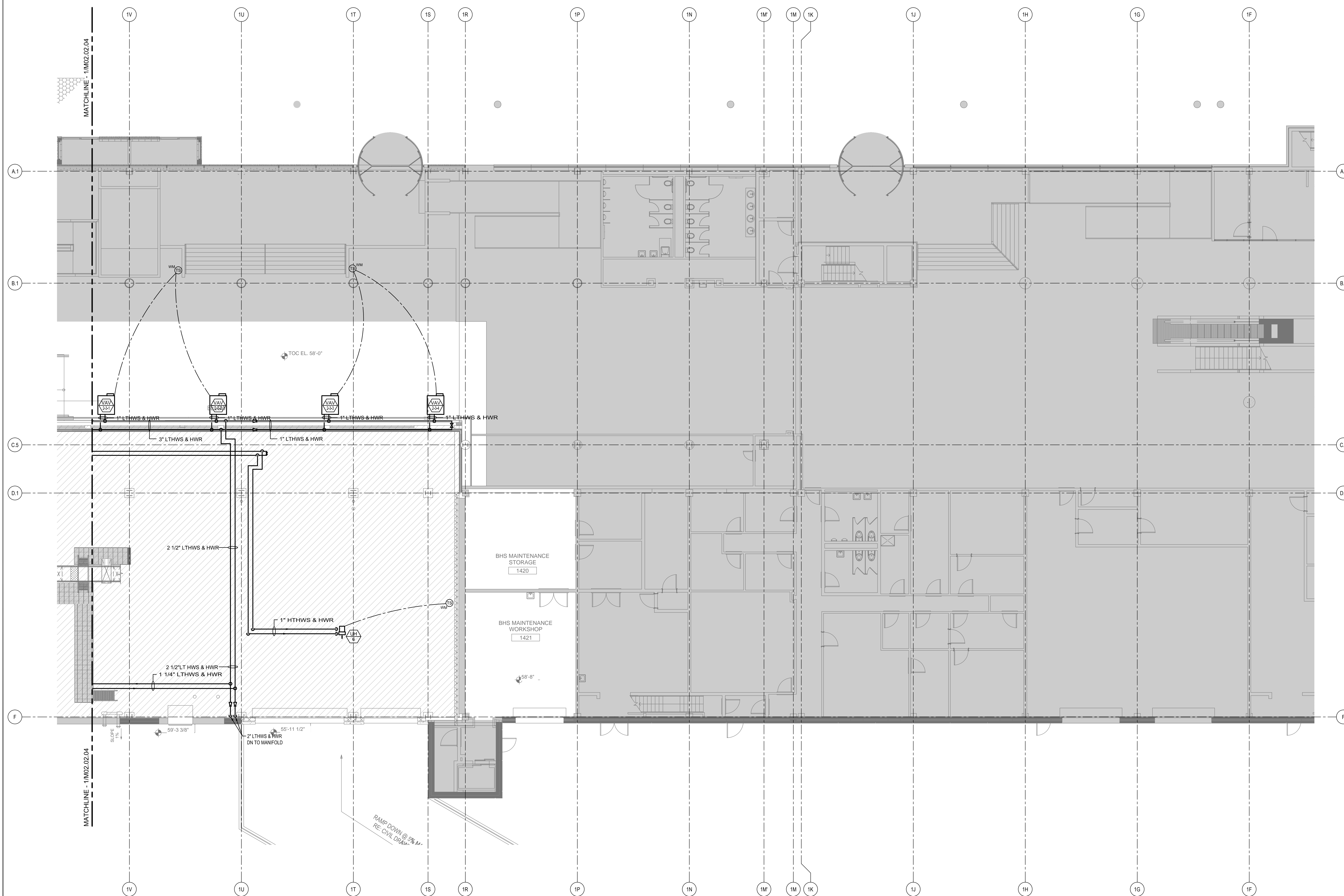
1001 Westbrook Street
Portland, Maine 04102

Gensler

2020 K Street, NW
Suite 200
Washington, DC 20006
Telephone 202.721.5200
Facsimile 202.872.8587

oest ASSOCIATES, INC.
343 Gorham Road, South Portland, ME 04106 P: (207) 761-1770 F: (207) 774-1246 www.oest.com
engineers • architects • surveyors • construction managers

amec
343 Gorham Road, South Portland ME 04106
P: (207) 761-1770 F: (207) 774-1246 www.amec.com



THESE DRAWINGS ARE ISSUED FOR CONSTRUCTION AND REFLECT ALL AMEC ISSUED BULLETINS AND SKETCHES.

Issue	Date & Issue Description	By	Check
01	12/03/08	PWZ	RHB
02	01/23/09	PWZ	RHB
03	10/26/09	PWZ	RHB
04	11/12/09	PWZ	RHB
05	05/21/10	PWZ	RHB
06	09/01/11	PWZ	RHB

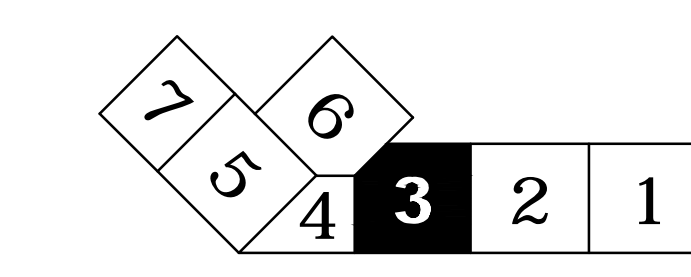
GENERAL NOTES

- A SEE SHEET M00.00 FOR LEGEND AND GENERAL NOTES.
- B MAINTAIN 18" MIN CLEARANCE FROM RADIANT TUBING TO FLOOR DRAINS, COLUMN WRAPS, PLUMBING FIXTURES, EQUIPMENT SUPPORTS, AND PIPING AT FLOORS.
- C RUN ALL PIPING HIGH AS POSSIBLE WITHIN BEAM POCKET TO AVOID BAGGAGE HANDLING EQUIPMENT.

Seal/Signature

 Project Name: P1W Terminal Enhancement
 Project Number: 00.0395.000
 CAD File Name: T:\6330101\Sheets\M02.02.03.dwg
 Description: MECHANICAL PIPING PLAN - LEVEL 2 - ZONE 3

KEY PLAN



Scale: 1/8" = 1'-0"
 Ref. North

M02.02.03

©2009 Gensler

MECHANICAL PIPING PLAN - LEVEL 2 - ZONE 3

SCALE: 1/8" = 1'-0"