

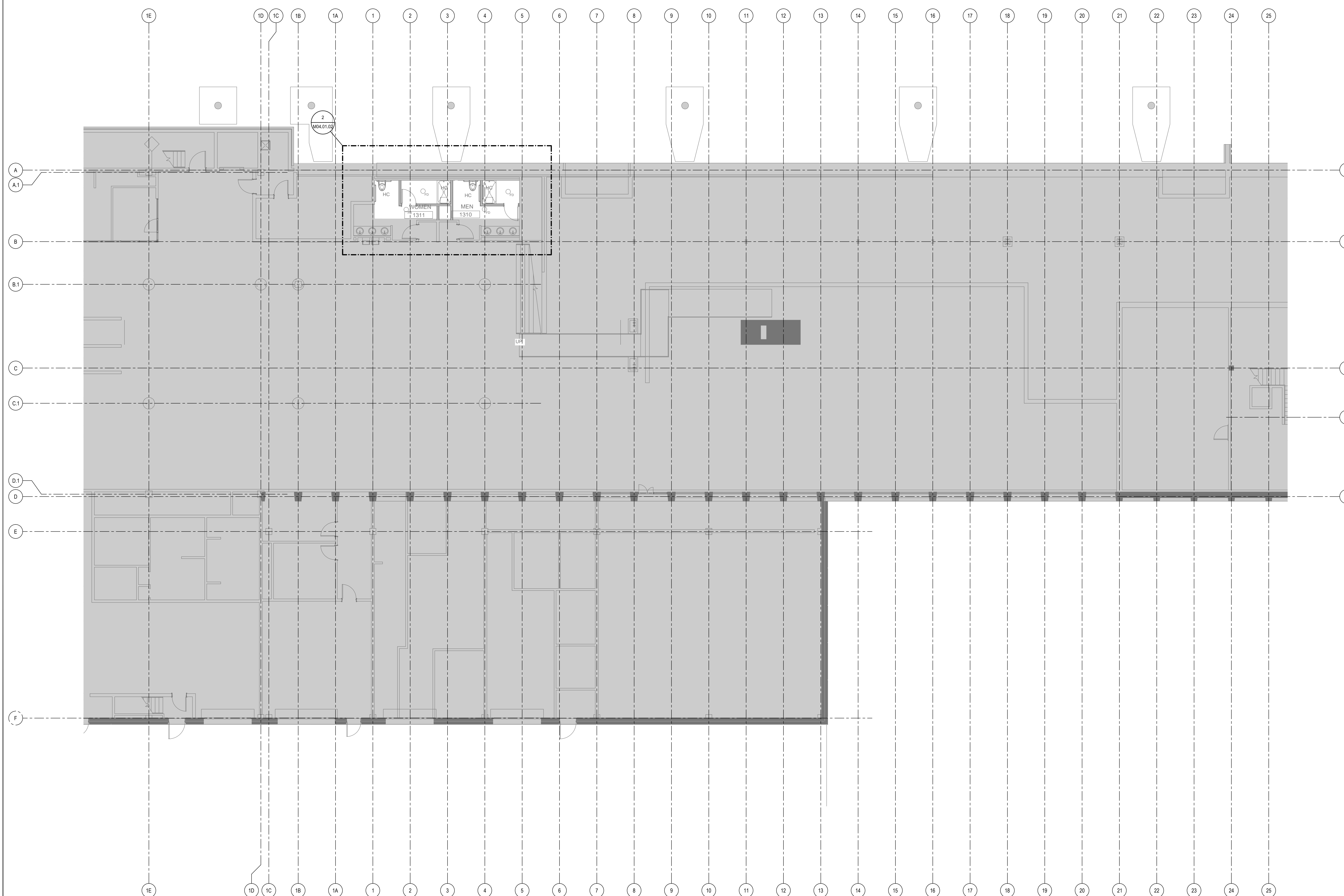
SHEET NOTES

Portland International  
Jetport  
1001 Westbrook Street  
Portland, Maine 04102

**Gensler**  
2020 K Street, NW  
Suite 200  
Washington, DC 20006  
Telephone 202.721.5200  
Facsimile 202.872.8587

**nest ASSOCIATES, INC.**  
343 Gorham Road, South Portland, ME 04106 P: (207) 761-1770 F: (207) 774-1246 www.nest.com  
engineers • architects • surveyors • construction managers

**amec**  
343 Gorham Road, South Portland ME 04106  
P: (207) 761-1770 F: (207) 774-1246 www.amec.com



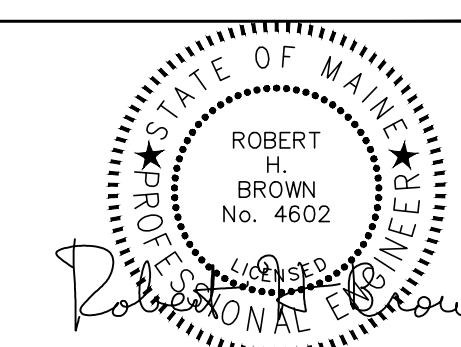
THESE DRAWINGS ARE ISSUED FOR CONSTRUCTION AND REFLECT ALL AMEC ISSUED BULLETINS AND SKETCHES.

Issue	Date & Issue Description	By	Check
01	08/20/11	PWZ	RHB
BULLETIN	116		
05	09/01/11	PWZ	RHB
	ISSUED FOR CONSTRUCTION		

GENERAL NOTES

A SEE SHEET M00.00 FOR LEGEND AND GENERAL NOTES.

\_\_\_\_\_  
Seal/Signature

  
ROBERT BROWN  
No. 4602  
STATE OF MAINE  
Professional Engineer  
09/01/11

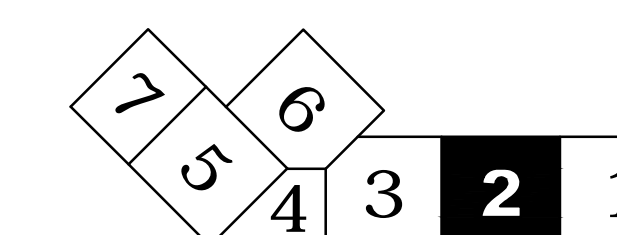
Project Name  
PJM Terminal Enhancement

Project Number  
00.0395.000

CAD File Name  
T:\6330101\Sheets\M02.01.02.dwg

Description  
MECHANICAL PIPING PLAN - LEVEL 1 - ZONE 2

KEY PLAN



Scale  
1/8" = 1'-0"



M02.01.02

©2009 Gensler