

MECHANICAL RADIANT PIPING ZONE PLAN - LEVEL 1

SCALE: 1/16" = 1'-0"

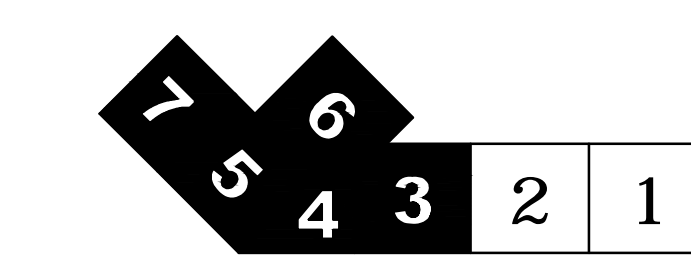
1

SHEET NOTES

GENERAL NOTES

- A SEE SHEET M00.00 FOR LEGEND AND GENERAL NOTES.
- B MAINTAIN 18" MIN CLEARANCE FROM RADIANT TUBING TO FLOOR DRAINS, COLUMN WRAPS, PLUMBING FIXTURES, EQUIPMENT SUPPORTS, AND PIPING AT FLOORS.

KEY PLAN



Portland International Jetport
 1001 Westbrook Street
 Portland, Maine 04102

Gensler
 2020 K Street, NW
 Suite 200
 Washington, DC 20006
 Telephone 202.721.5200
 Facsimile 202.872.8587

nest ASSOCIATES, INC.
 343 Gorham Road, South Portland, ME 04106
 P: (207) 761-1770 F: (207) 774-1246 www.nest.com
 engineers • architects • surveyors • construction managers

amec
 343 Gorham Road, South Portland ME 04106
 P: (207) 761-1770 F: (207) 774-1246 www.amec.com

THESE DRAWINGS ARE ISSUED FOR CONSTRUCTION AND REFLECT ALL AMEC ISSUED BULLETINS AND SKETCHES.

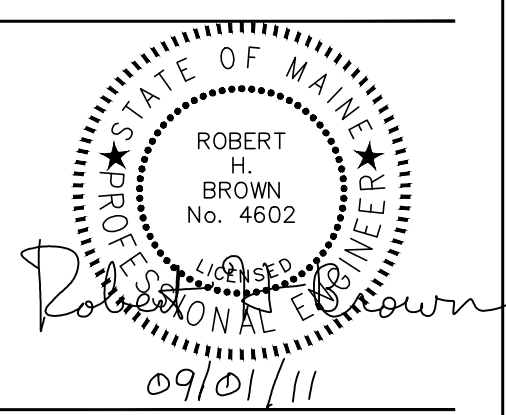
Issue	Date & Issue Description	By	Check
01	12/03/08	PWZ	RHB
02	01/23/09	PWZ	RHB
03	10/26/09	PWZ	RHB
04	11/12/09	PWZ	RHB
05	09/01/11	PWZ	RHB

Project Name
 P1M Terminal Enhancement

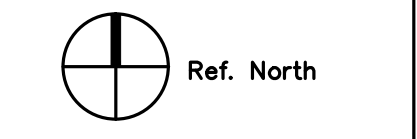
Project Number
 08.6395.000

CAD File Name
 T:\6330101\Sheets\M02.01.00.dwg

Description
 MECHANICAL RADIANT PIPING ZONE PLAN - LEVEL 1



Scale
 1/16" = 1'-0"



M02.01.00

©2009 Gensler