

**SHEET NOTES**

01 DEMOLISH AND REMOVE EXIST FINTUBE RADIATION, INCLUDING PIPING BACK TO HWIS & HRV MAIN, CONTROLS, AND ENCLOSURE.

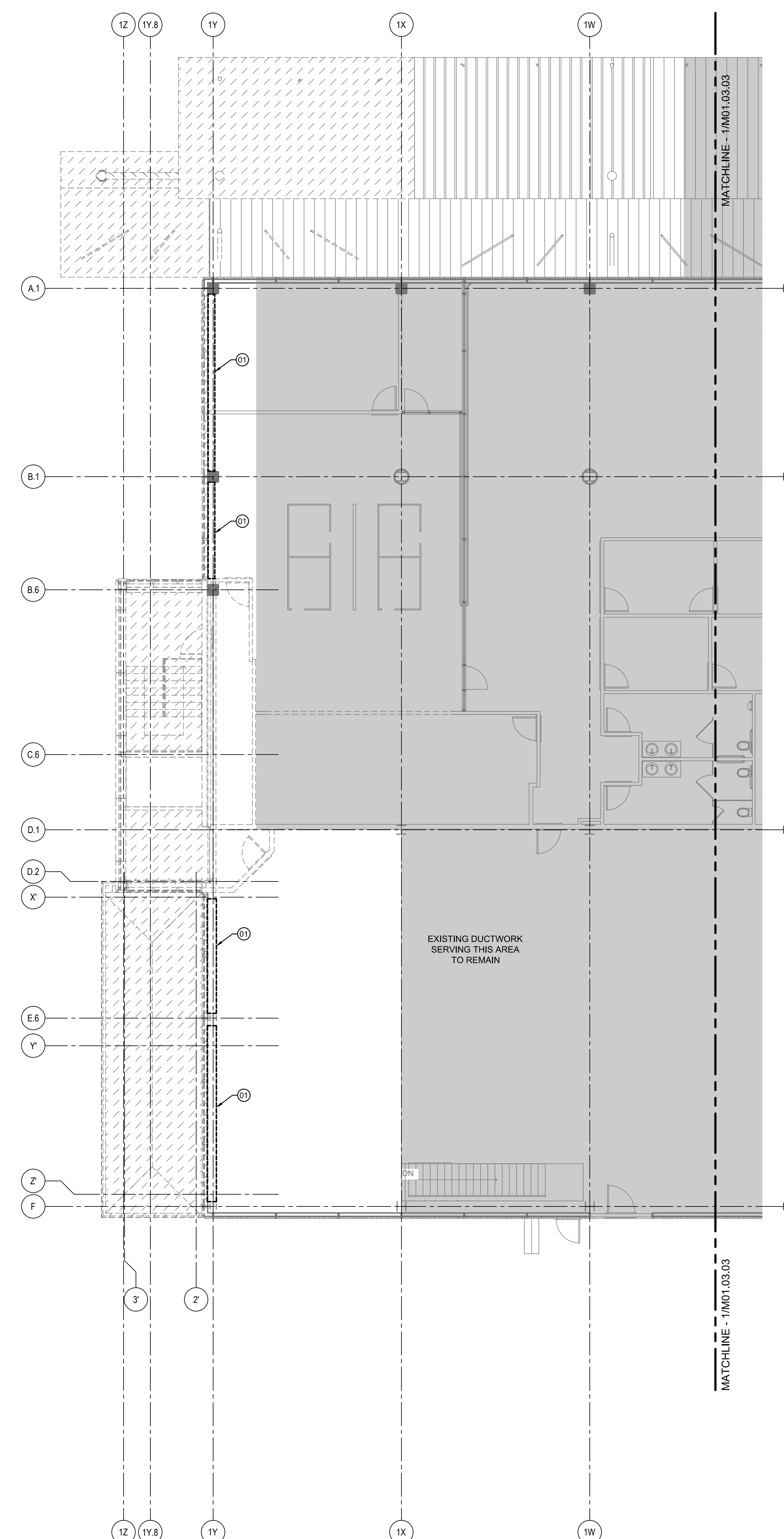
**Portland International Jetport**

1001 Westbrook Street  
Portland, Maine 04102

**Gensler**  
2020 K Street, NW  
Suite 200  
Washington, DC 20006  
Telephone 202.721.5200  
Facsimile 202.872.8587

**nest ASSOCIATES, INC.**  
343 Gorham Road, South Portland, ME 04106  
P: (207) 761-1770 F: (207) 774-1246 www.nest.com  
engineers • architects • surveyors • construction managers

**amec**  
343 Gorham Road, South Portland ME 04106  
P: (207) 761-1770 F: (207) 774-1246 www.amec.com



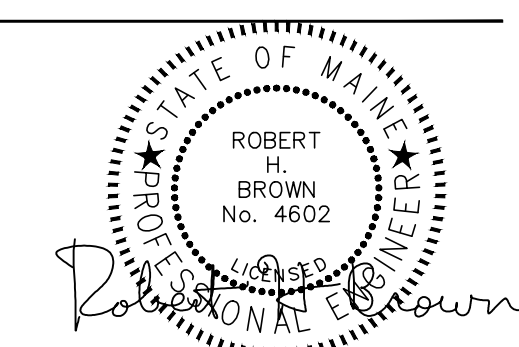
THESE DRAWINGS ARE ISSUED FOR CONSTRUCTION AND REFLECT ALL AMEC ISSUED BULLETINS AND SKETCHES.

Issue	Date & Issue Description	By	Check
01	01/23/09	PWZ	RHB
02	10/26/09	PWZ	RHB
03	09/01/11	PWZ	RHB

**GENERAL NOTES**

- A SEE SHEET M00.00 FOR LEGEND AND GENERAL NOTES.
- B CONTRACTOR SHALL FIELD VERIFY EXISTING DUCTWORK & PIPING PRIOR TO DEMOLITION.

Seal/Signature



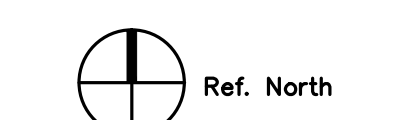
Project Name  
PJM Terminal Enhancement

Project Number  
09.0395.000

CAD File Name  
T:\6330101\Sheets\M01.03.04.dwg

Description  
MECHANICAL DEMOLITION PLAN - LEVEL 3 - ZONE 4

Scale  
1/8" = 1'-0"



**M01.03.04**

©2009 Gensler

**MECHANICAL DEMOLITION PLAN - LEVEL 3 - ZONE 4**

SCALE: 1/8" = 1'-0"