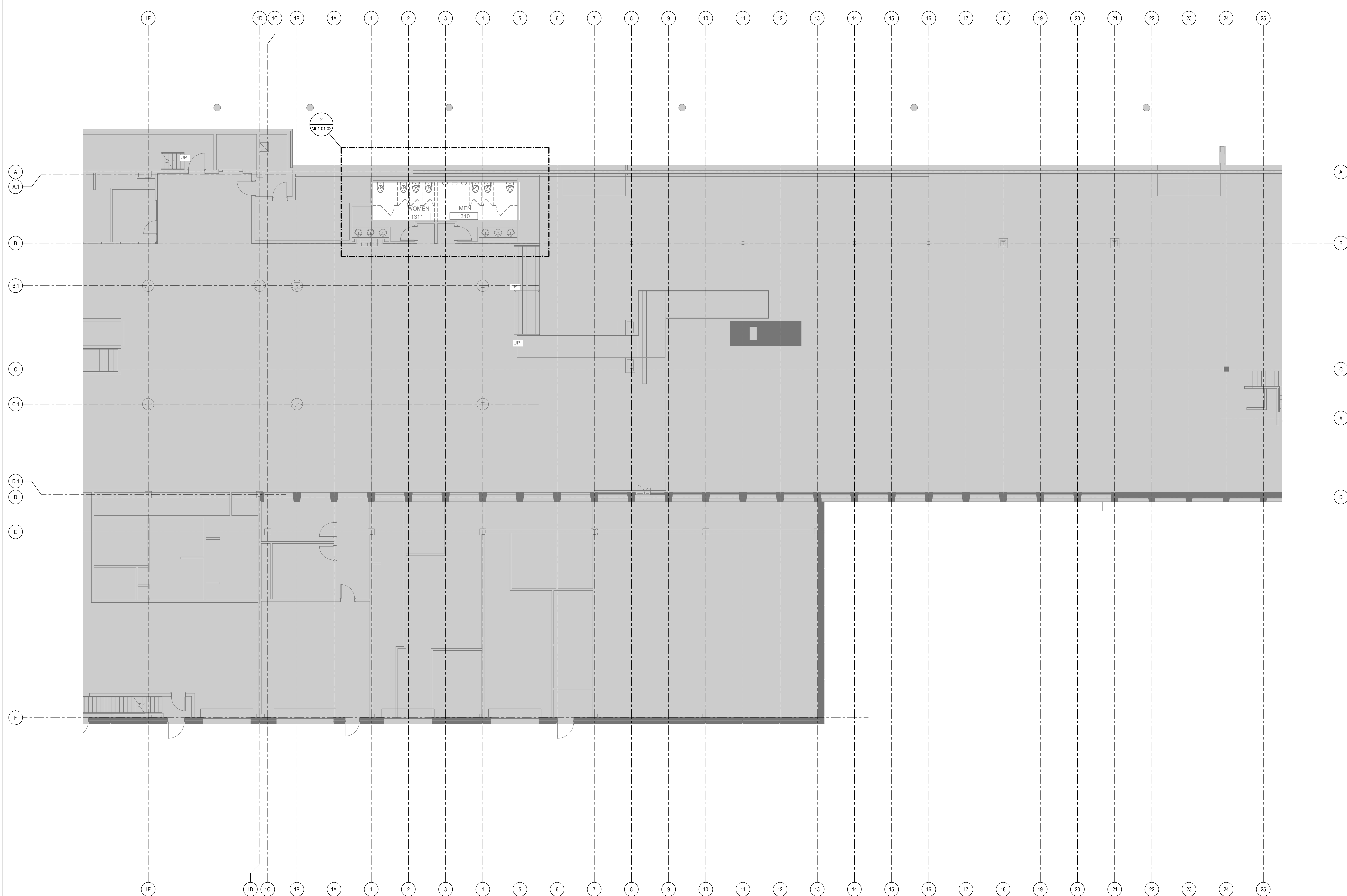


MECHANICAL DEMOLITION ENLARGED PLAN
SCALE: 1/8" = 1'-0" **1**



MECHANICAL DEMOLITION PLAN - LEVEL 1 - ZONE 2
SCALE: 1/8" = 1'-0" **1**

SHEET NOTES

- 01 EXISTING CONDITIONS PLANS FOR ROOMS WOMEN 1310 & MEN 1311 ARE TAKEN FROM STEVENS ARCHITECTS RECORD DRAWINGS, DATED 12/16/81. CONTRACTOR SHALL FIELD VERIFY EXISTING PIPING.
- 02 DISCONNECT CABINET UNIT HEATER AND REMOVE FROM WALL. SALVAGE FOR REINSTALLATION. CONTRACTOR SHALL CLEAN INTERIOR FINS AND FAN AND EXTERIOR HOUSING OF UNIT PRIOR TO REINSTALLATION.

Portland International Jetport

1001 Westbrook Street
Portland, Maine 04102

Gensler
2020 K Street, NW
Suite 200
Washington, DC 20006
Telephone 202.771.5200
Facsimile 202.872.8587

nest ASSOCIATES, INC.
343 Gorham Road, South Portland, ME 04106
P: (207) 761-1770 F: (207) 774-1246 www.nest.com
engineers • architects • surveyors • construction managers

amec
343 Gorham Road, South Portland ME 04106
P: (207) 761-1770 F: (207) 774-1246 www.amec.com

THESE DRAWINGS ARE ISSUED FOR CONSTRUCTION AND REFLECT ALL AMEC ISSUED BULLETINS AND SKETCHES.

Issue	Date	Issue Description	By	Check
BULLETIN	08/26/11	116	PWZ	RHB
02	09/01/11	ISSUED FOR CONSTRUCTION	PWZ	RHB

GENERAL NOTES

- A SEE SHEET M00.00 FOR LEGEND AND GENERAL NOTES.
- B CONTRACTOR SHALL FIELD VERIFY EXISTING DUCTWORK & PIPING PRIOR TO DEMOLITION.

Project Name
PJM Terminal Enhancement

Project Number
08.0395.000

CAD File Name
T:\6330101\Sheets\M01.01.02.dwg

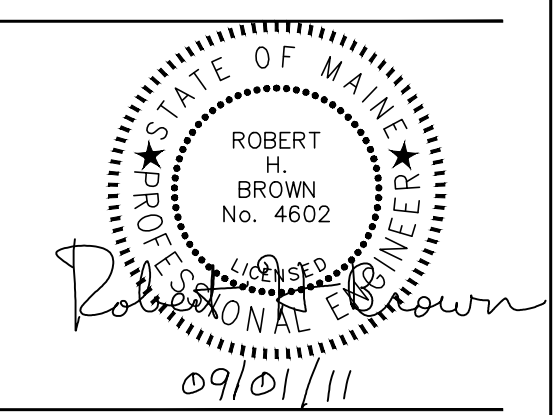
Description
MECHANICAL DEMOLITION PLAN - LEVEL 1 - ZONE 2

Scale
1/8" = 1'-0"

Ref. North

M01.01.02

C2009 Gensler



KEY PLAN

