

SHEET NOTES

- 01 UNIT HEATER - COORDINATE SPRINKLER TEMPERATURE RATINGS PER NFPA 13.
- 02 SPRINKLERS AND PIPING MUST BE INSTALLED A MINIMUM OF 8'-1" ABOVE FINISHED FLOOR IN ANY LOCATIONS WHERE BAGGAGE CARTS CAN BE DRIVEN. THIS NOTE IS APPLICABLE TO ALL BAGGAGE HANDLING AREAS.

Portland International Jetport

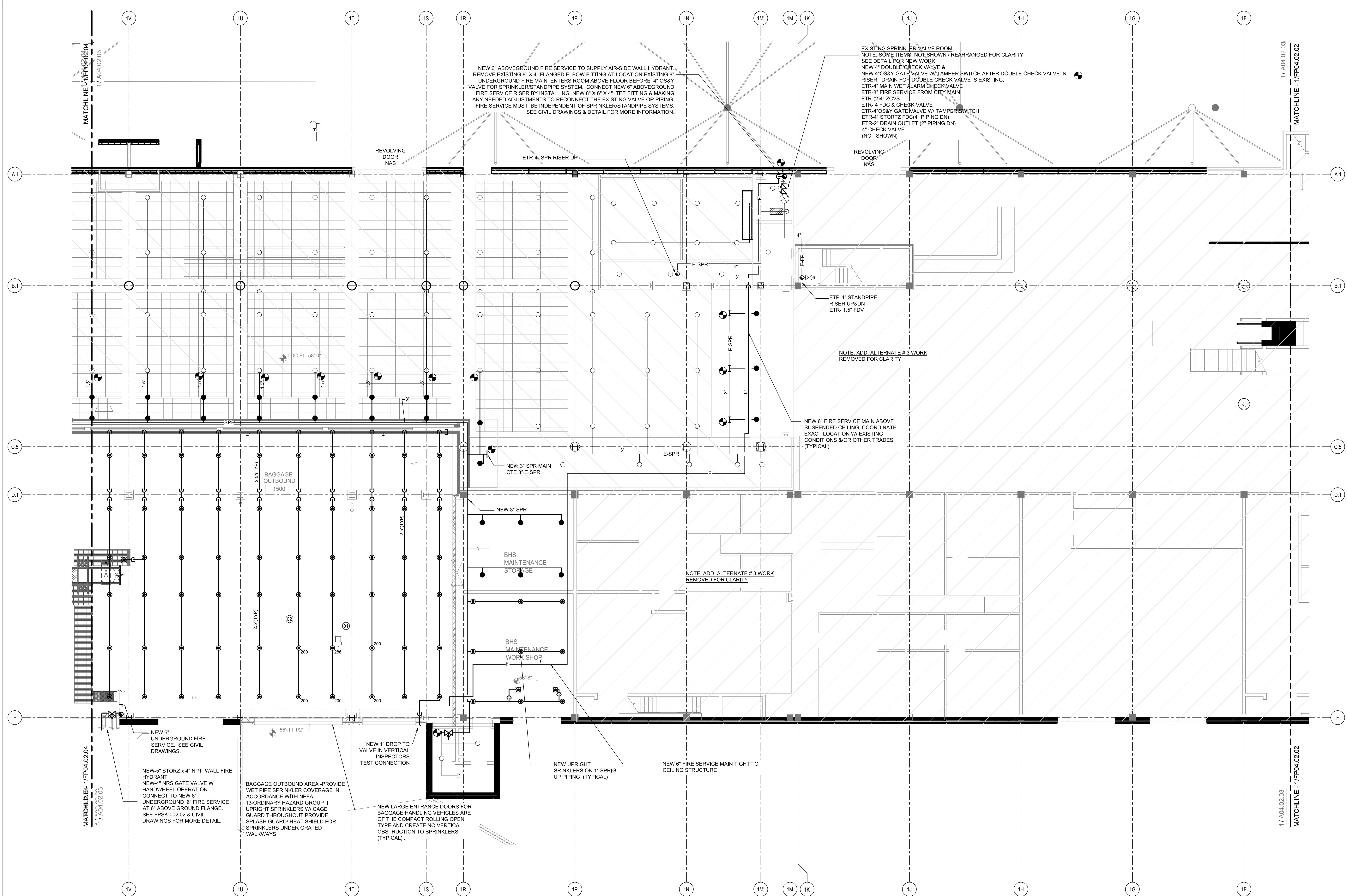
1001 Westbrook Street
Portland, Maine 04102

Gensler
2020 K Street, NW
Suite 200
Washington, DC 20006
Telephone 202.721.5200
Facsimile 202.872.8587

oest ASSOCIATES, INC.
343 Gorham Road, South Portland, ME 04106
P: (207) 761-1770 F: (207) 774-1246 www.oest.com
engineers • architects • surveyors • construction managers

amec
343 Gorham Road, South Portland, ME 04106
P: (207) 761-1770 F: (207) 774-1246 www.amec.com

FIRE RISK MANAGEMENT, INC.
1 First Street
Suite 100
Portland, ME 04101
(207) 442-7208
www.fire-risk.com



GENERAL NOTES

A SEE SHEET FP00.01 FOR LEGEND, SCHEDULES & GENERAL NOTES.

THESE DRAWINGS ARE ISSUED FOR CONSTRUCTION AND REFLECT ALL FRM ISSUED BULLETINS AND SKETCHES.

| Issue | Date & Issue Description | By | Check |
|-------|--------------------------|-----|-------|
| 01 | 12/17/08 | | |
| 02 | 01/23/09 | MHY | JLD |
| 03 | 10/26/09 | JLD | SKD |
| 04 | 06/22/10 | | SKD |
| 145 | 09/01/11 | | SKD |

Seal/Signature

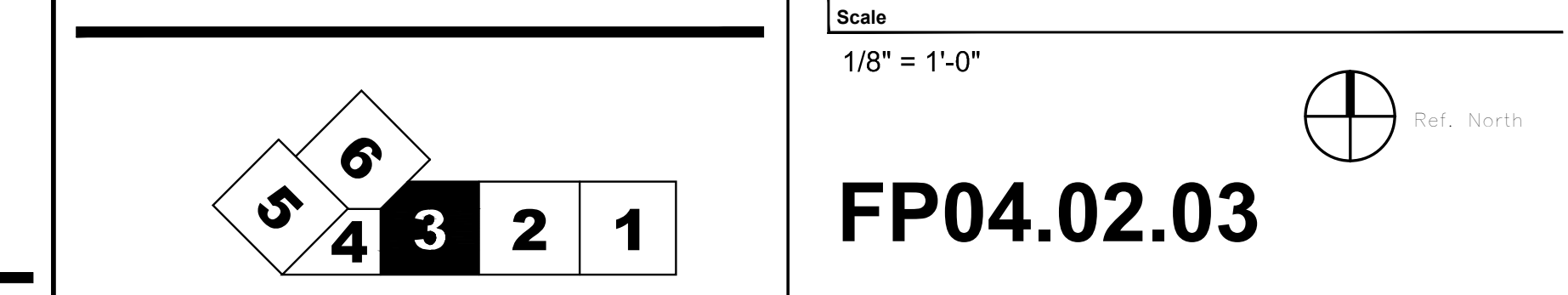
Project Name
PJM Terminal Enhancement

Project Number
08.0395.000

CAD File Name
FP04.02.03.dwg

Description
FIRE PROTECTION PLAN - LEVEL 2 - ZONE 3

KEY PLAN



FIRE PROTECTION PLAN - LEVEL 2 - ZONE 3
SCALE: 1/8"=1'-0"