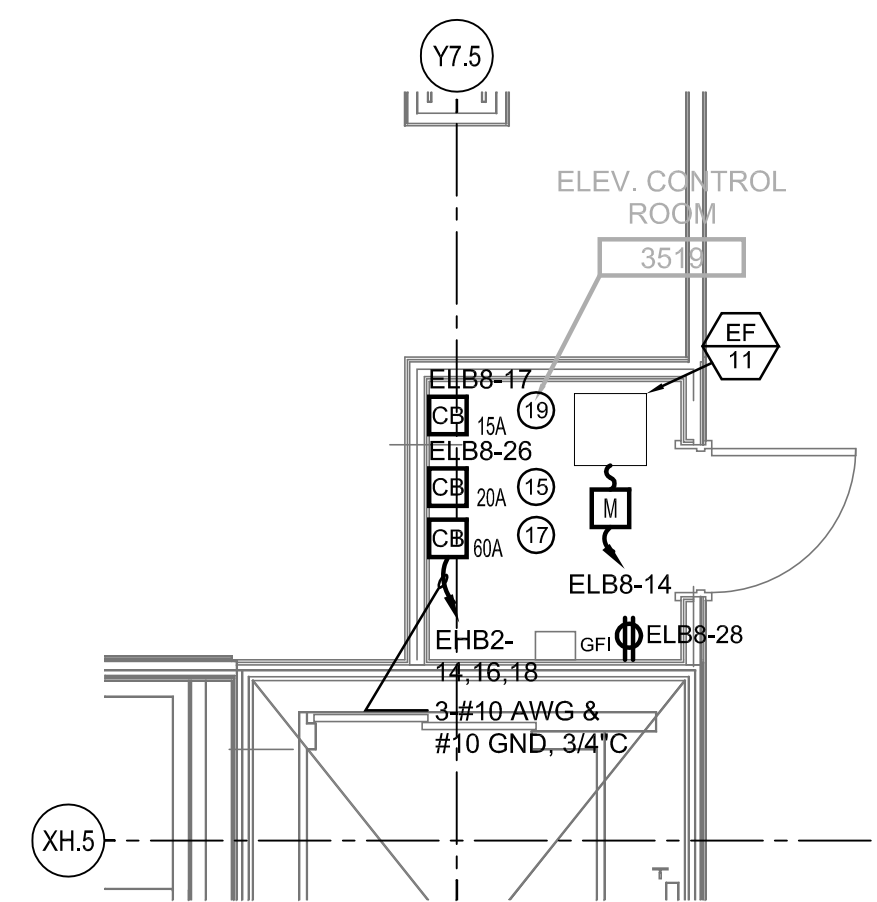
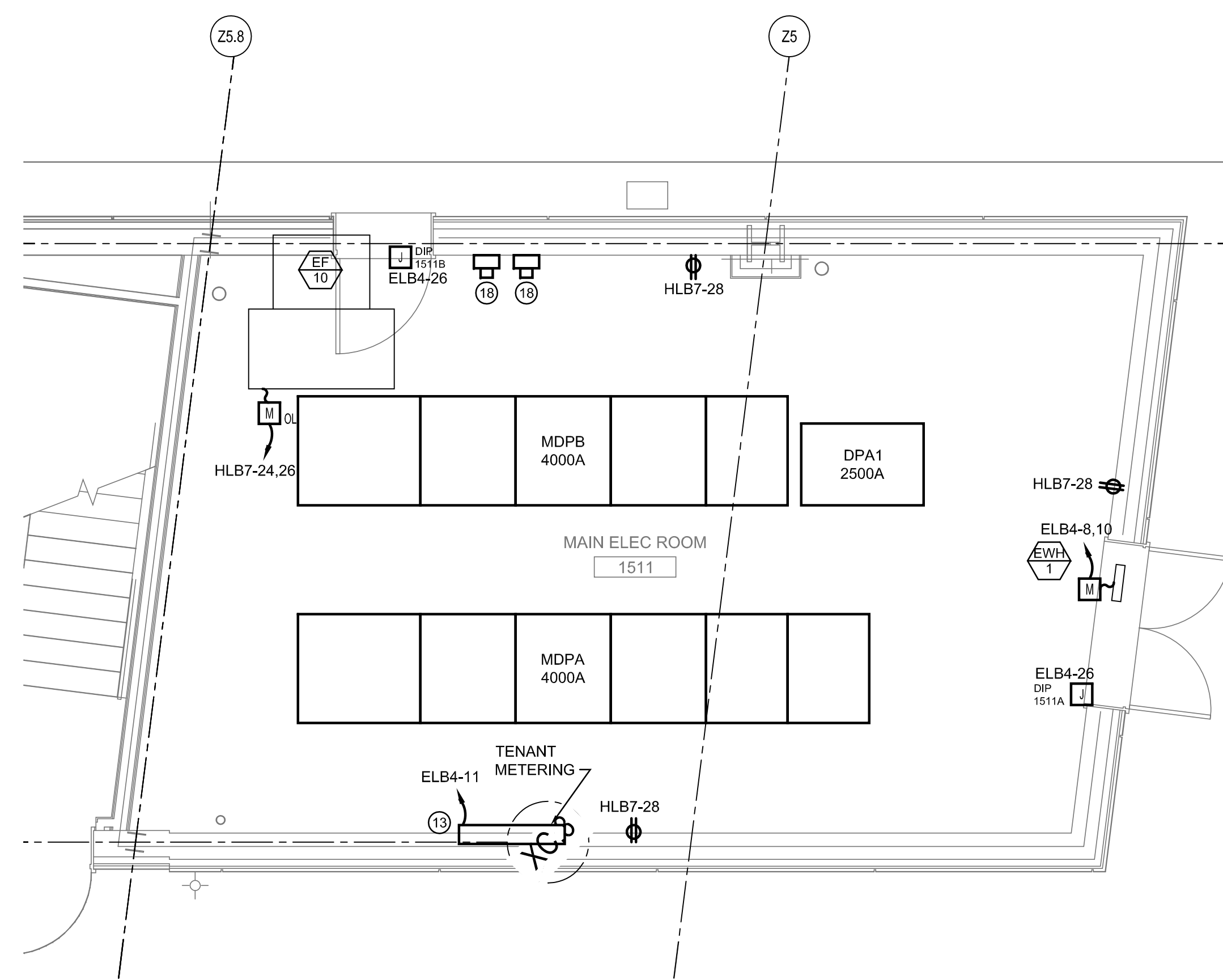


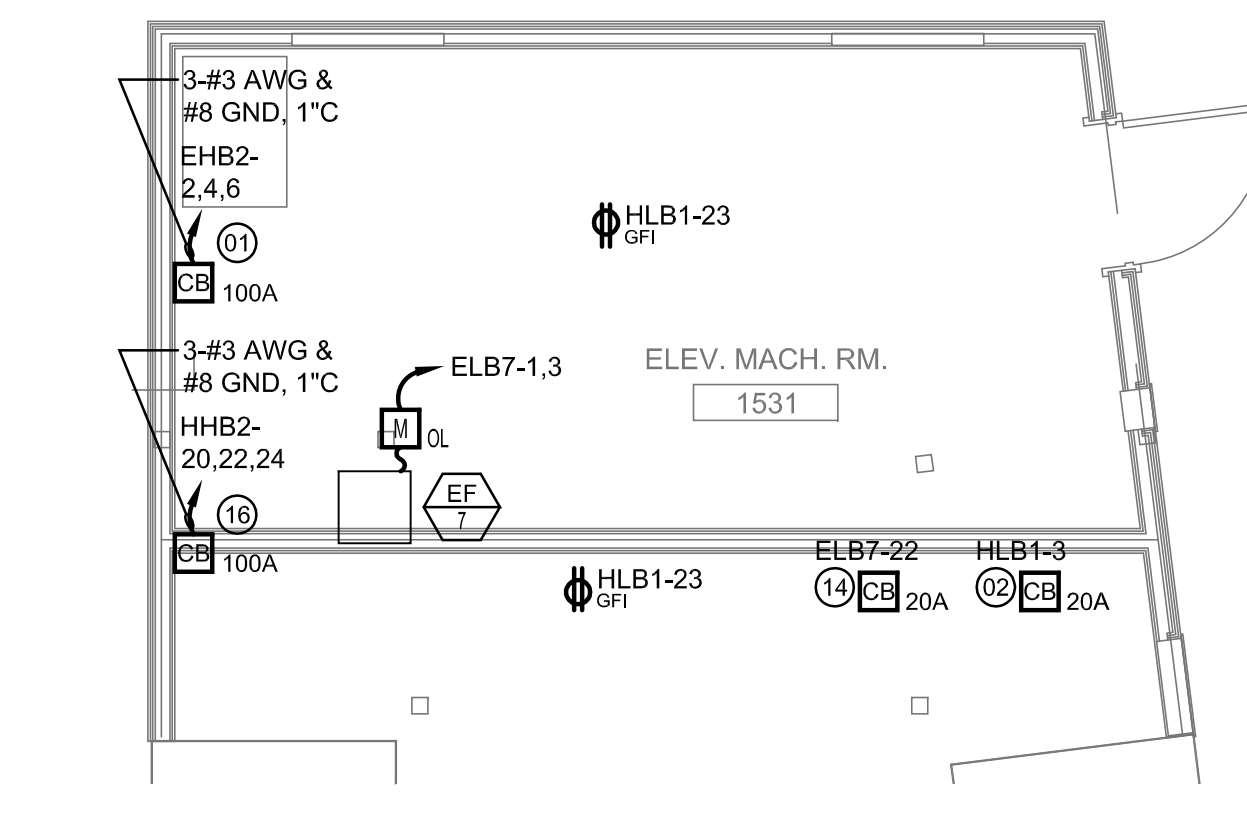
GENERATOR ROOM 3517 & ELEC. CLOSET 3516 ENLARGED PLAN 5
SCALE: 1/4" = 1'-0"



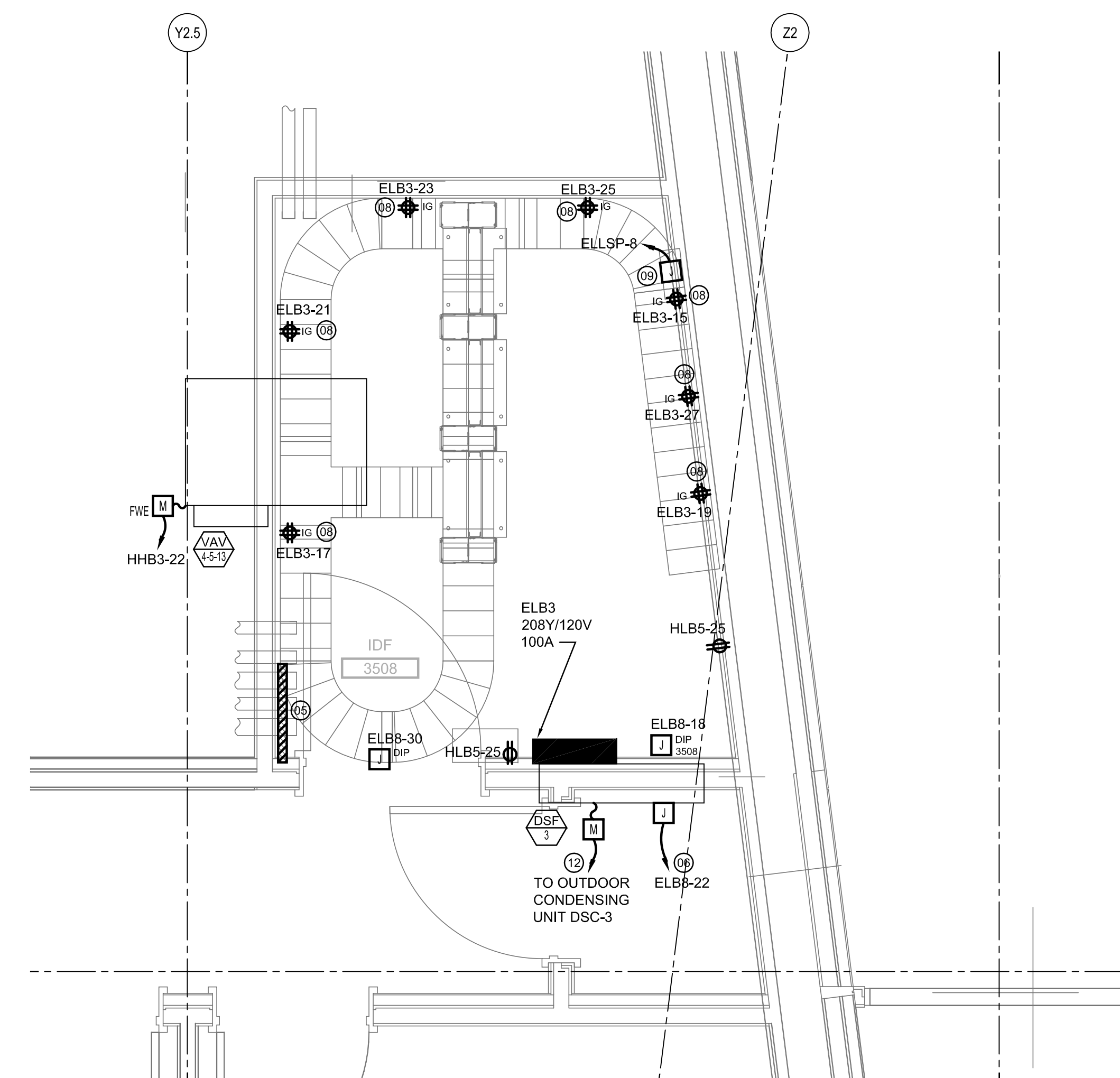
ELEV. CONTROL RM 3519 ENLARGED PLAN 6
SCALE: 1/4" = 1'-0"



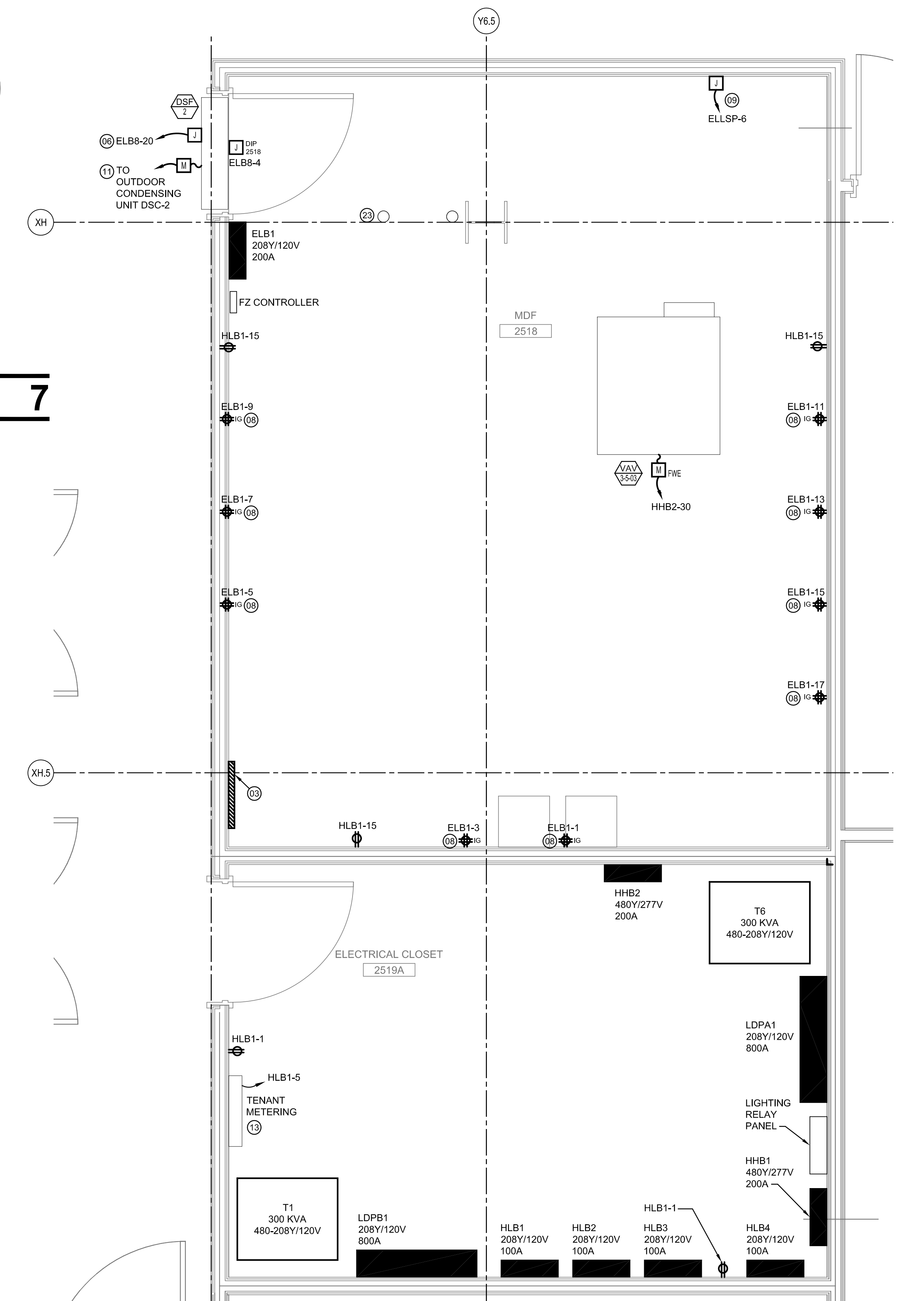
ELECTRICAL ROOM ENLARGED PLAN 4
SCALE: 1/4" = 1'-0"



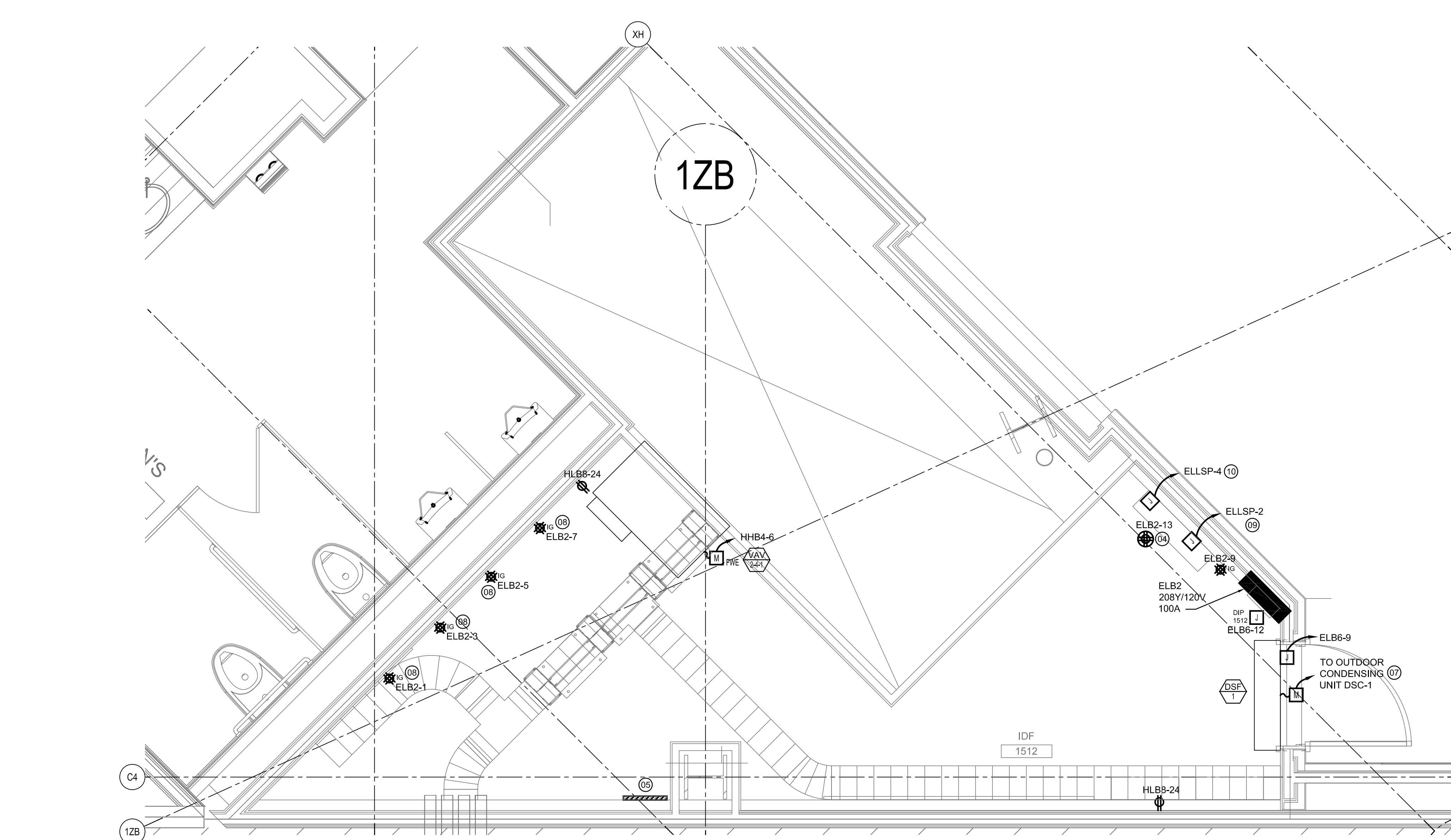
ELEV. CONTROL RM 1531 ENLARGED PLAN 7
SCALE: 1/4" = 1'-0"



IDF 3508 ENLARGED PLAN 2
SCALE: 1/2" = 1'-0"



MDF ROOM 2518 & ELECTRICAL CLOSET 2519 ENLARGED PLAN 1
SCALE: 1/2" = 1'-0"



IDF ROOM 1523 ENLARGED PLAN 3
SCALE: 1/2" = 1'-0"

SHEET NOTES

- 01 ELEVATOR #4 DISCONNECT. MOUNT NEXT TO ELEVATOR CONTROLLER.
- 02 ELEVATOR CAB LIGHTING DISCONNECT FOR ELEVATOR #5.
- 03 1/4"x4"x2" COPPER GROUNDING BAR MOUNTED A MINIMUM OF 2" OFF WALL ON INSULATED SUPPORTS. BAR SHALL BE PRE-DRILLED WITH HOLES THAT ACCEPT STANDARD SIZE LUGS. RUN 3/0 AWG GROUND WIRE IN 1" FROM BAR BACK TO MAIN SERVICE ENTRANCE GROUND & CONNECT VIA EXOTHERMIC WELD.
- 04 RECEPTACLE FOR CONNECTION TO CPU'S FOR FIDS.
- 05 1/4"x4"x2" COPPER GROUNDING BAR MOUNTED A MINIMUM OF 2" OFF WALL ON INSULATED SUPPORTS. BAR SHALL BE PRE-DRILLED WITH HOLES THAT ACCEPT STANDARD SIZE LUGS. RUN 3/0 AWG GROUND WIRE IN 1" FROM BAR BACK TO MDF GROUNDING BAR & CONNECT VIA EXOTHERMIC WELD. EXACT LOCATION TO BE COORDINATED IN FIELD.
- 06 PROVIDE 120V CIRCUIT FOR DSF CONDENSATE PUMP.
- 07 DSF-1 RECEIVES ITS POWER FROM DSC-1 LOCATED OUTSIDE ON SHEET E02.01.04. CONTRACTOR SHALL PROVIDE CONDUIT & WIRE AS PER VENDOR INSTRUCTIONS.
- 08 COORDINATE EXACT LOCATION OF RECEPTACLES WITH COMMUNICATIONS DRAWINGS.
- 09 PROVIDE 120V CIRCUIT TO TRANSPONDER PANEL. COORDINATE EXACT LOCATION WITH COMMUNICATIONS DRAWINGS.
- 10 PROVIDE 120V CIRCUIT TO FIRE ALARM CONTROL PANEL. COORDINATE EXACT LOCATION WITH COMMUNICATION DRAWINGS.
- 11 DSF-2 RECEIVES ITS POWER FROM DSC-2 LOCATED OUTSIDE ON ROOF SHOWN ON SHEET E02.03.05. CONTRACTOR TO PROVIDE CONDUIT & WIRE AS PER VENDOR INSTRUCTIONS.
- 12 DSF-3 RECEIVES ITS POWER FROM DSC-3 LOCATED OUTSIDE ON ROOF SHOWN ON SHEET E02.04.04. CONTRACTOR TO PROVIDE CONDUIT & WIRE AS PER VENDOR INSTRUCTIONS.
- 13 HIGH DENSITY METERING BY SQUARE D OR EQUAL. SEE NOTES ON ONE-LINE DIAGRAM FOR CT WIRING, CONDUIT, & COMMUNICATIONS WIRING REQUIREMENTS.
- 14 ELEVATOR CAB LIGHTING DISCONNECT FOR ELEVATOR #4
- 15 ELEVATOR CAB LIGHTING DISCONNECT FOR ELEVATOR #6.
- 16 ELEVATOR #5 DISCONNECT. MOUNT NEXT TO ELEVATOR CONTROLLER.
- 17 ELEVATOR #6 DISCONNECT. MOUNT NEXT TO ELEVATOR CONTROLLER.
- 18 CMP ELECTRIC METER. PROVIDE 1-1/4" CONDUIT FROM METER TO SWITCH BOARD FOR WIRING TO CT'S AND A 1" CONDUIT FROM METER TO MDF ROOM ON LEVEL 3 ZONE 5 FOR CAT. 5 CABLE.
- 19 REMOTE MONITORING DISCONNECT FOR ELEVATOR #8.
- 20 CIRCUIT FOR CONNECTION TO GENERATOR BATTERY CHARGER AND HEATERS.
- 21 CIRCUIT FOR CONNECTION TO GENERATOR BATTERY CHARGER AND HEATERS.
- 22 FOR CONNECTION TO MOTORIZED ROOF HATCH. COORDINATE EXACT LOCATION OF ROOF HATCH MOTOR WITH VENDOR. CONTRACTOR SHALL COORDINATE WITH VENDOR FOR WIRING TO PUSH BUTTON CONTROL STATION AND ANY NECESSARY LOW VOLTAGE WIRING TO LIMIT SWITCHES.
- 23 TWO 4" CONDUITS TO ROOF FOR FUTURE ANTENNA FARM. PROVIDE PULL STRINGS AND MAINTAIN 2" SEPARATION BETWEEN CONDUITS
- 24 PROVIDE CONTROL SCHEME FOR 20HP RADIATOR FAN MOTOR AND 1 HP PLUMP P12 THAT SHALL START THESE UNITS ONLY AFTER THE GENERATOR IS UP TO FULL SPEED AND PROVIDING FULL VOLTAGE. THE GENERATOR MOUNTED CONTROL PANEL CAN BE PROGRAMMED TO PROVIDE MULTIPLE SETS OF DRY CONTACTS THAT OPERATE WHILE IN AUTO MODE. COORDINATE WITH CONTRACTOR FURNISHED AND EQUIPMENT FURNISHED CONTROLLERS TO PROVIDE ALL NECESSARY INTERCONNECTION WIRING, CONTROL RELAYS AND APPURTENANCES FOR OPERATION AS DESCRIBED ABOVE

GENERAL NOTES

- A SEE SHEET E00.00 FOR LEGEND AND GENERAL NOTES.
- B CONTRACTOR SHALL REFER TO SECURITY, IT, AND PUBLIC ADDRESS SYSTEMS DRAWINGS FOR CONDUITS & WIRING REQUIREMENTS.

Portland International Jetport
1001 Westbrook Street
Portland, Maine 04102

Gensler
2020 K Street, NW
Suite 200
Washington, DC 20006
Telephone 202.721.5200
Facsimile 202.872.8587

oest ASSOCIATES, INC.
343 Gorton Road, South Portland, ME 04106
P: (207) 761-1770 F: (207) 774-1246 www.oest.com
engineers - architects - surveyors - construction managers

amec
343 Gorton Road, South Portland ME 04106
P: (207) 761-1770 F: (207) 774-1246 www.amec.com

THESE DRAWINGS ARE ISSUED FOR CONSTRUCTION AND REFLECT ALL AMEC ISSUED BULLETINS AND SKETCHES.

Issue	Date & Issue Description	By	Check
01	09/22/08 DESIGN DEVELOPMENT	LAM	BHG
02	12/03/08 75% CONSTRUCTION DOCUMENTS	LAM	BHG
03	01/23/09 95% CONSTRUCTION DOCUMENTS	LAM	BHG
04	10/26/09 ISSUED FOR PERMIT	LAM	BHG
05	11/02/09 ADDENDUM #1	LAM	BHG
02	06 11/12/09 ADDENDUM #2	LAM	BHG
88	07 03/09/11 BULLETIN 79	LAM	BHG
105	08 04/27/11 BULLETIN 88A	CAP	BHG
145	09 09/01/11 BULLETIN 88A	LAM	BHG
	ISSUED FOR CONSTRUCTION		

Project Name
PJM Terminal Enhancement

Project Number
09-6395-000

CAD File Name
T:\S330\01\Sheets\E08.01.dwg

Description
ELECTRICAL ENLARGED PLANS

Scale
AS NOTED

E08.01

©2009 Gensler