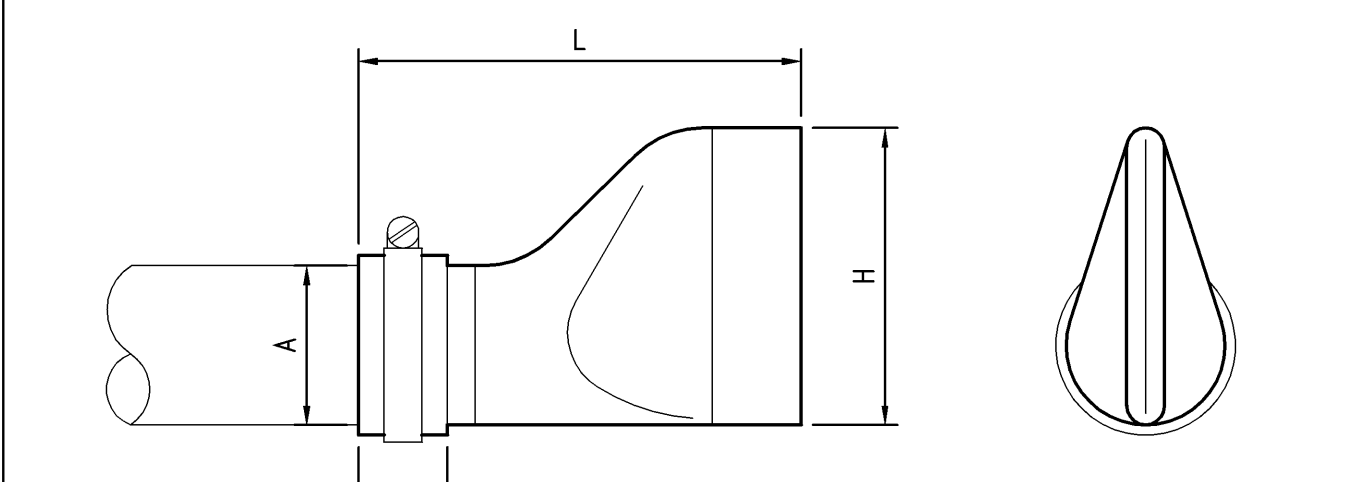


CATCH BASIN - TYPE F
SCALE: NOT TO SCALE **12**

PIPE DIA. (A)	LENGTH (B)	BILL HEIGHT (C)	CURF LENGTH (D)
4"	10"	8"	1 1/2"
6"	16"	12"	2"
8"	18"	14"	2"
12"	27"	23"	4"
16"	36"	30"	5"
18"	36"	34"	6"
24"	48"	44"	8"
30"	67"	68"	10"
48"	68"	78"	10"



BACKFLOW PREVENTER
SCALE: NOT TO SCALE **13**

- FILTER NOTES:**
- PIPE BACKFILL SHALL BE SUITABLE EXCAVATED MATERIAL.
 - ALL PIPES SHALL BE DUAL WALL, SMOOTH BORE HOPE CORRUGATED. ENDS OF UNDERDRAIN PIPING SHALL BE FITTED WITH PLUGS.
 - COMPACT EMBANKMENT MATERIAL TO 93% OF MAXIMUM DENSITY AS DETERMINED BY ASTM D1557.
 - EMBANKMENT MATERIAL SHALL CONTAIN A MINIMUM 20% PASSING THE #200 SIEVE AND SHALL CONSIST OF NATIVE MATERIAL MEETING THE UNIFIED SOIL CLASSIFICATION SM, ML, SC, CL.
 - 6" OF CLAY SOIL - MINIMUM 50% PASSING #200 SIEVE A MAXIMUM PERMEABILITY OF 1x10-6 CM/SEC. CLAY SHALL BE PLACED ON FILTER SIDE SLOPE FROM TOP OF FILTER MEDIA.
 - FILTER BED & SIDE SLOPES SHALL BE SEEDED USING "NEW ENGLAND EROSION CONTROL/RESTORATION MIX" FROM NEW ENGLAND WETLAND PLANTS, INC. OF AMHERST, MA (PHONE 413-548-8000), OR APPROVED EQUAL. (APPLICATION RATE 35#/ACRE)
 - MOOT UNDERDRAIN GRAVEL, TYPE B SPECIFICATION:

SIEVE	% BY WEIGHT
1"	80-100
1/2"	75-100
#4	50-100
#20	15-80
#60	0-15
#200	0-5

8. FILTER MEDIA

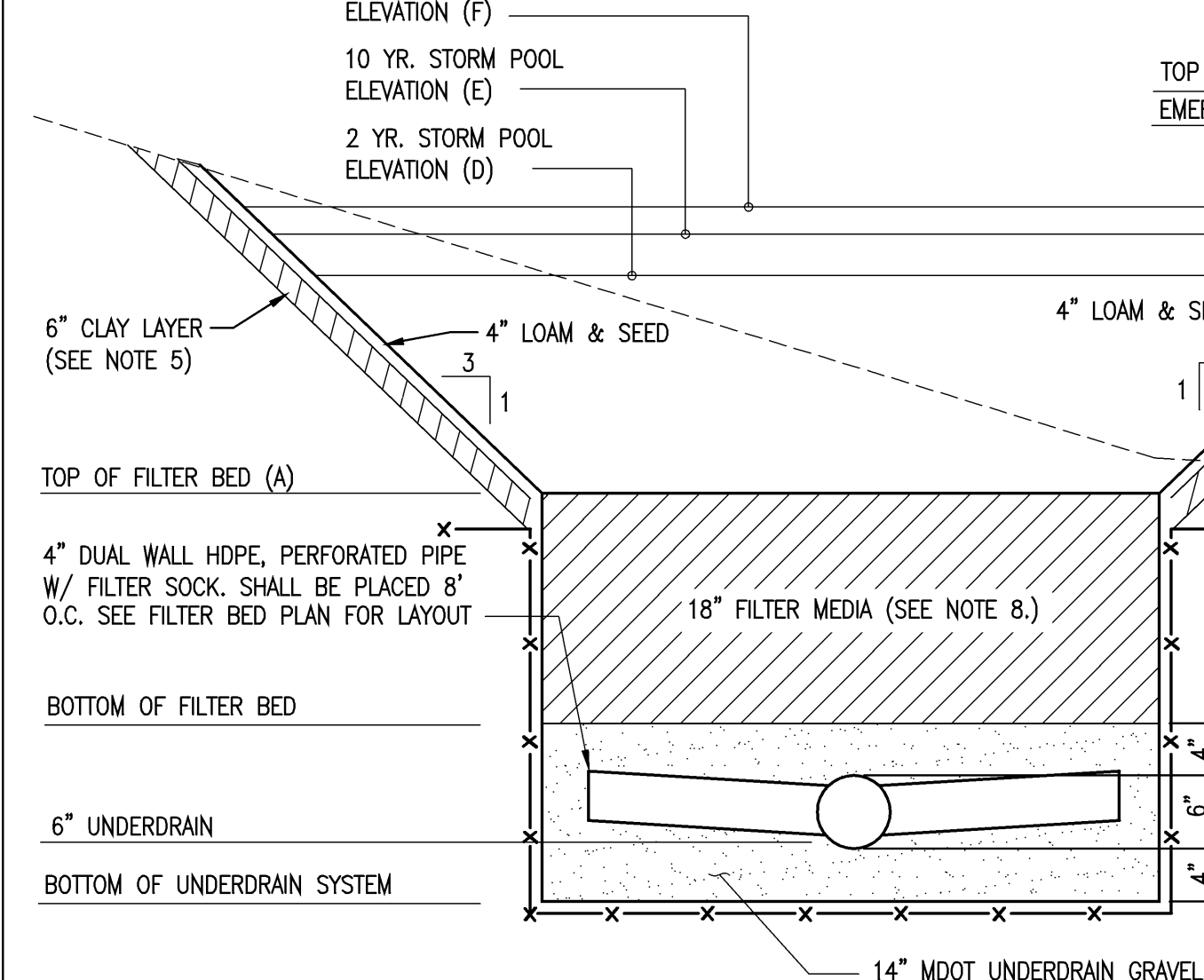
THE SOIL FILTER MEDIA SHALL BE COMPOSED OF A THOROUGHLY BLENDED MIXTURE OF MATERIALS MEETING THE SPECIFICATIONS IN TABLE BELOW:

FILTER MEDIA	MIXTURE BY VOLUME	SPECIFICATION
SAND	50%-55%	MEDOT SPECIFICATION #703.01 FINE AGGREGATE FOR CONCRETE (SEE TABLE BELOW)
TOPSOIL	20%-30%	LOAMY SAND TOPSOIL WITH MINIMAL CLAY CONTENT AND BETWEEN 15-25% FINES PASSING THE #200 SIEVE
MULCH	20%-30%	MODERATELY FINE, SHREDED BARK OR WOOD FIBER MULCH WITH LESS THAN 5% PASSING #200 SIEVE

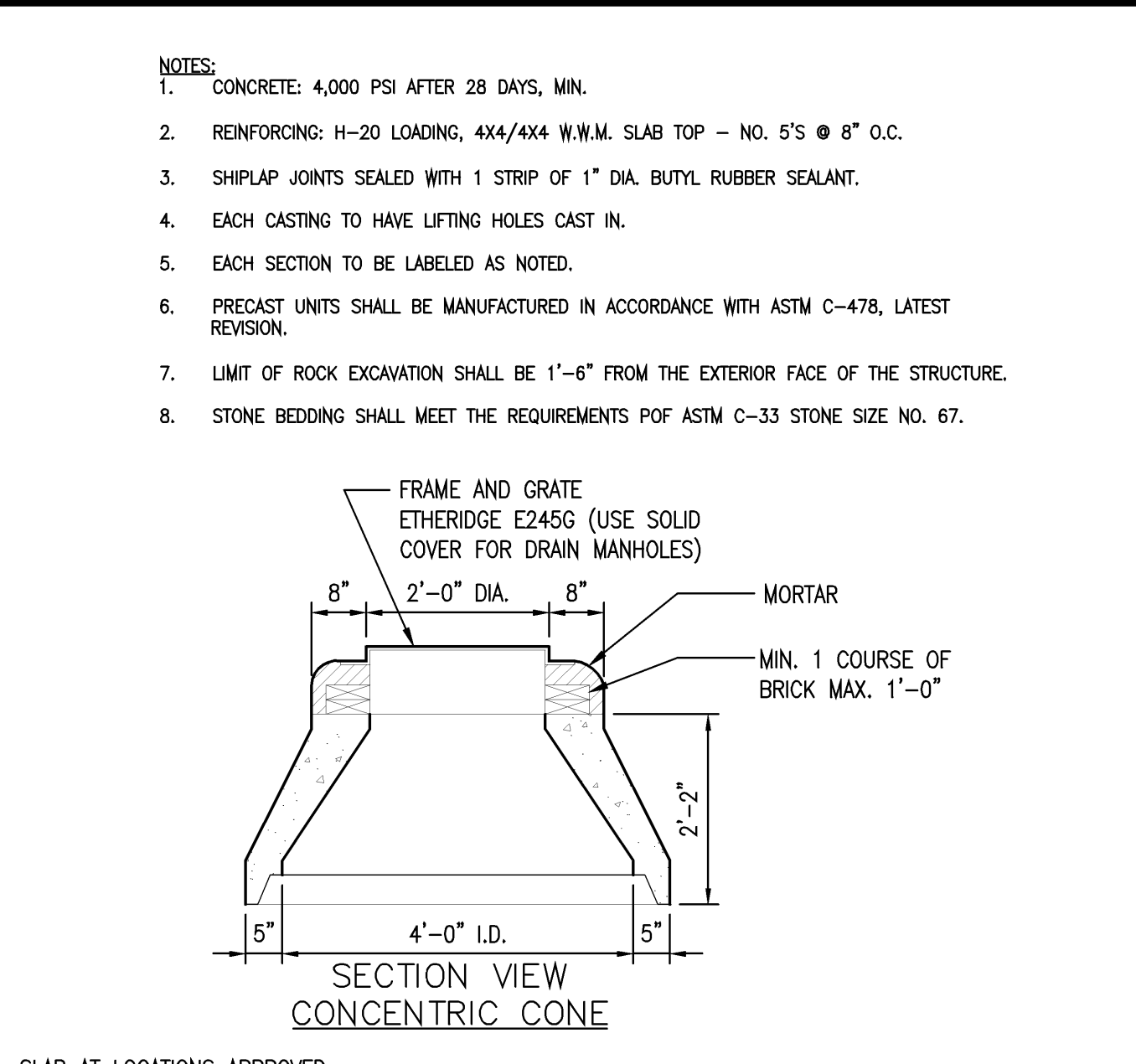
MEDOT 703.01 AGGREGATE	
SIEVE SIZE	% BY WEIGHT
3/8"	100
#4	95-100
#8	85-100
#16	60-85
#30	25-60
#60	10-30
#100	2-10
#200	0-5

ADJUST THE PROPORTION BASED ON THE ORGANIC CONTENT AND AMOUNT OF FINES OF EACH COMPONENT. IF THE SAND IS VERY CLEAN OR THE TOPSOIL IS RELATIVELY COARSE, USE MORE TOPSOIL AND LESS SAND WHILE STAYING WITHIN THE ESTABLISHED RANGES. IF THE SAND IS SILTY OR THE TOPSOIL LOAMY, USE MORE SAND AND LESS TOPSOIL.

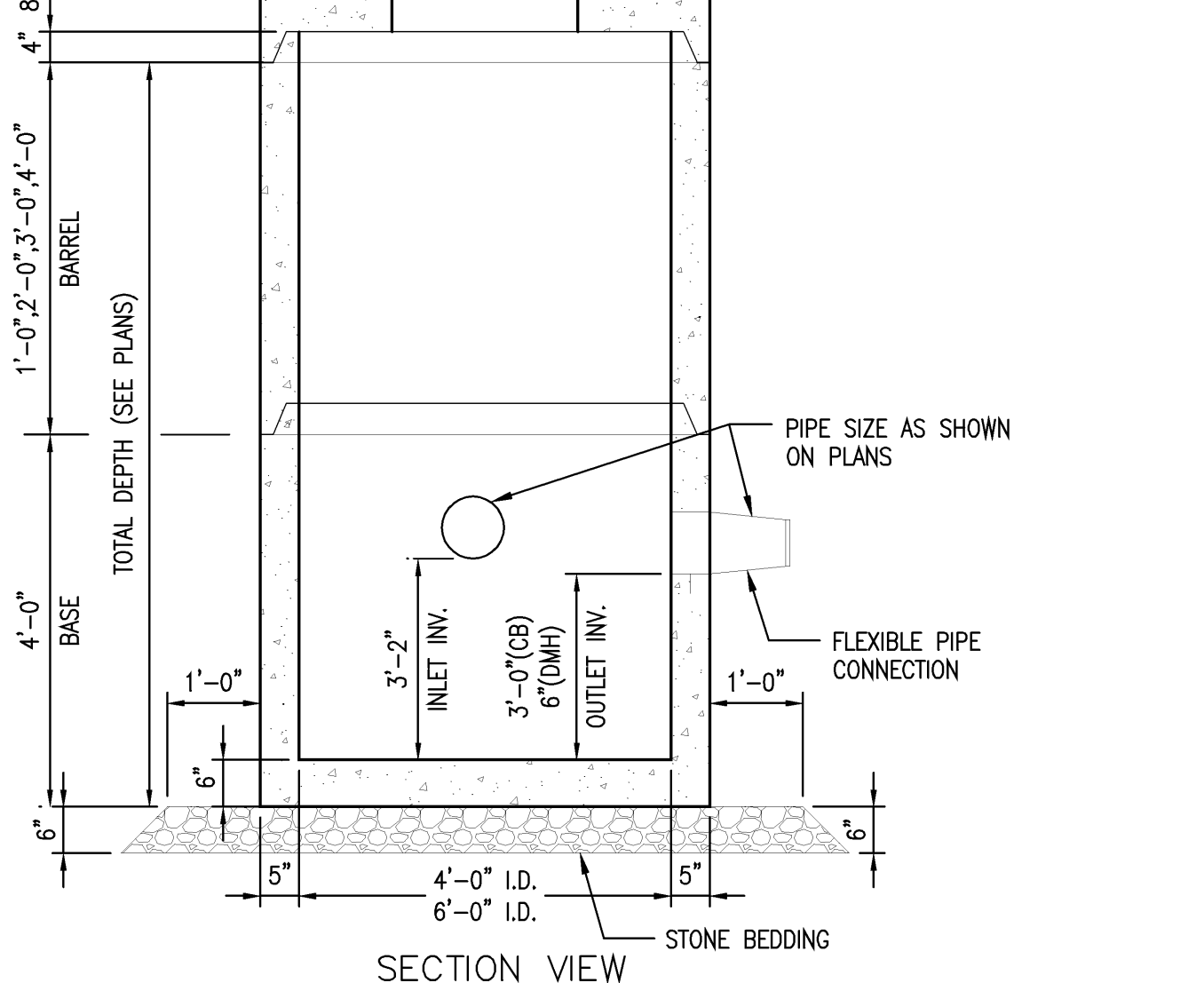
SOIL FILTER TREATMENT DETAIL
SCALE: NOT TO SCALE **14**



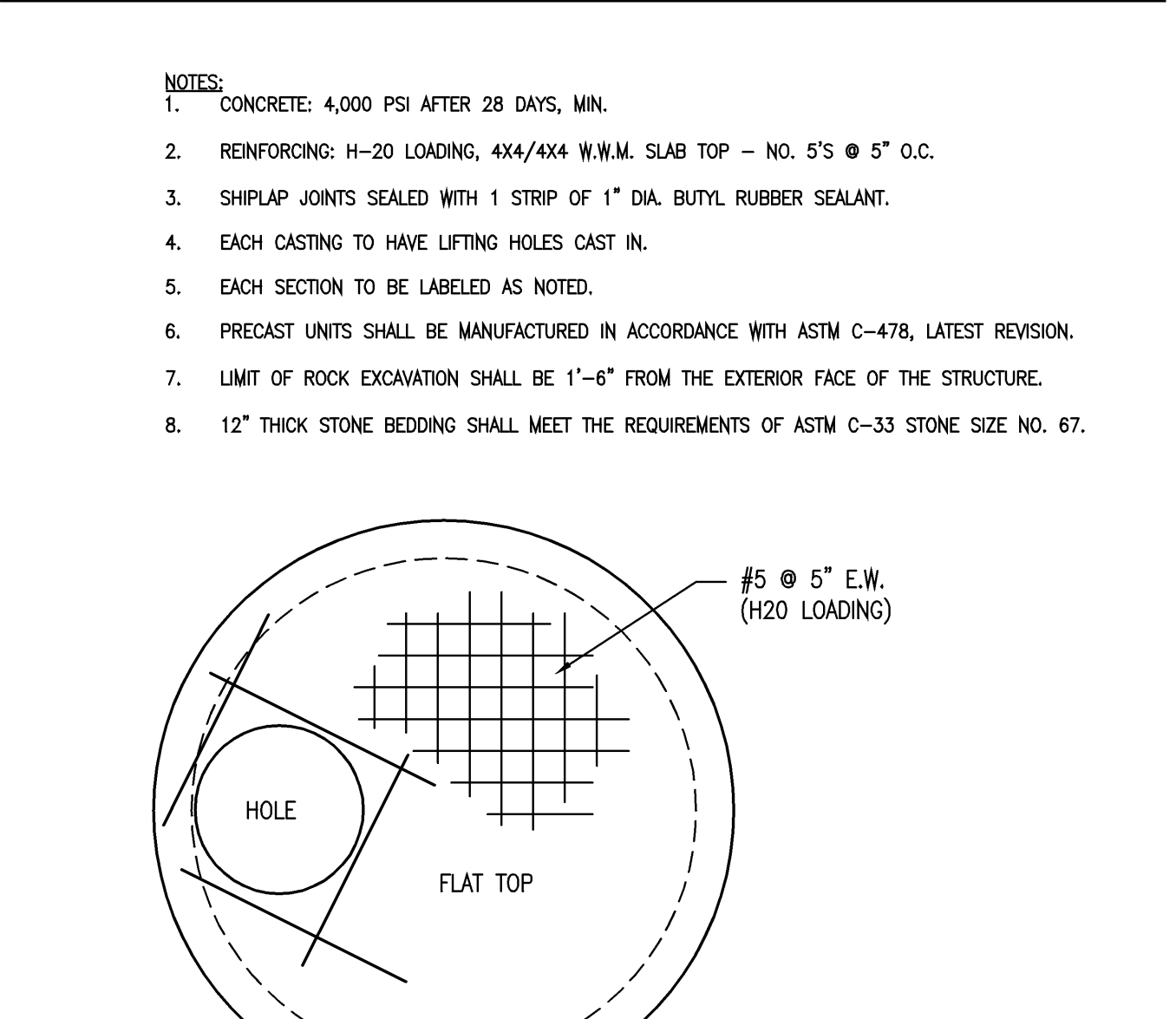
SOIL FILTER TREATMENT DETAIL
SCALE: NOT TO SCALE **15**



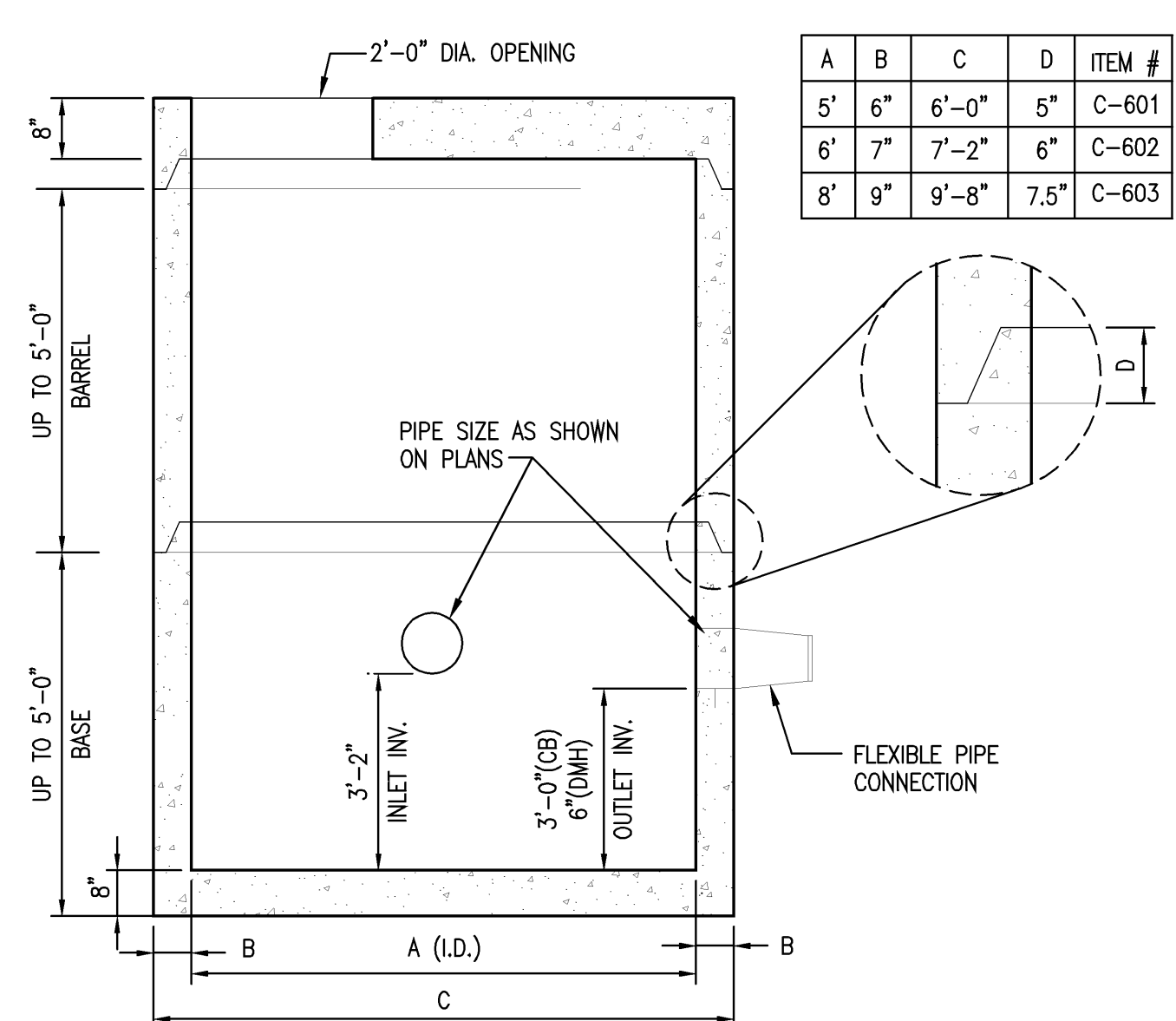
CATCH BASIN / DRAIN MANHOLE
SCALE: NOT TO SCALE **10**



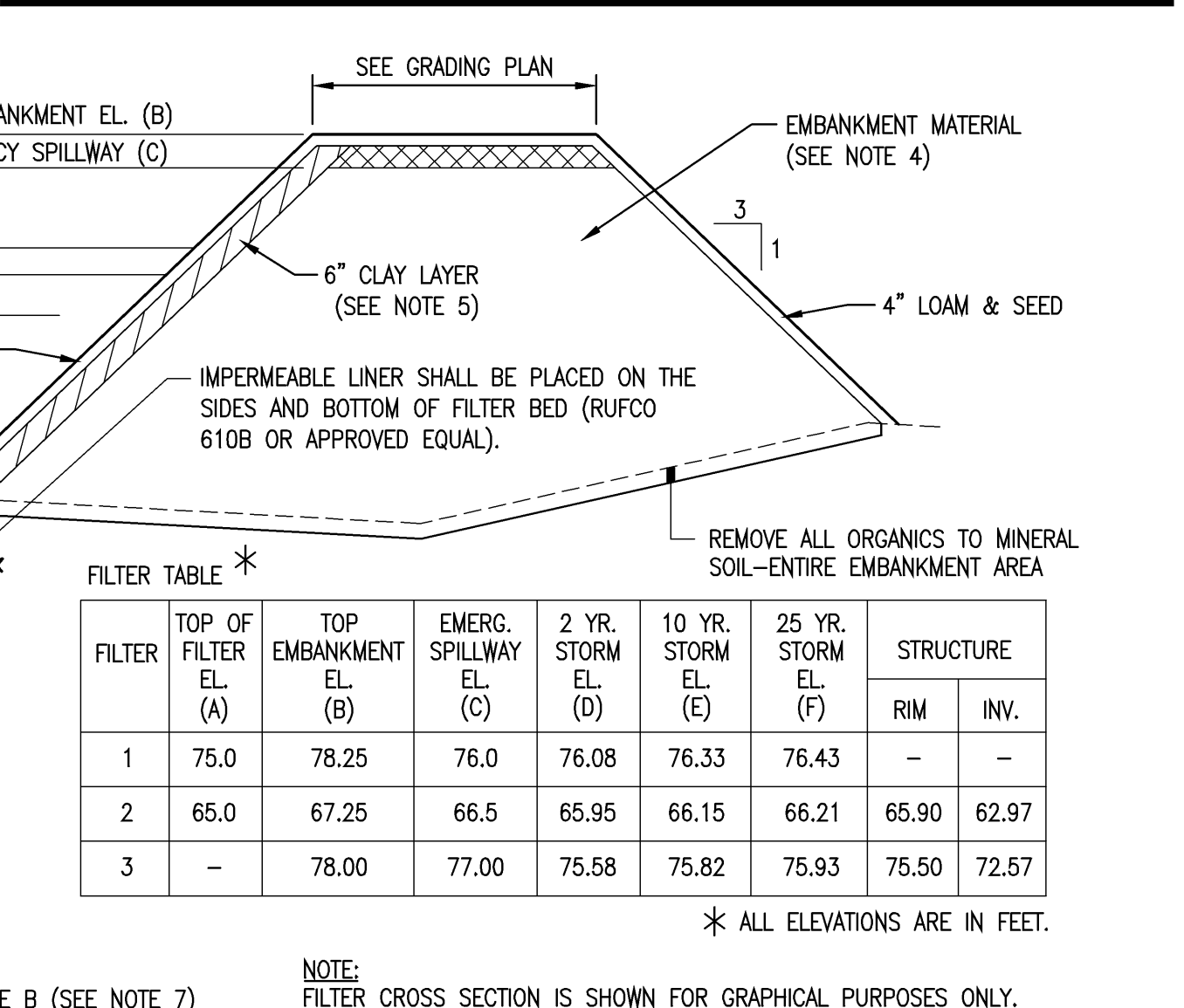
CATCH BASIN - TYPE 'E'
SCALE: NOT TO SCALE **5**



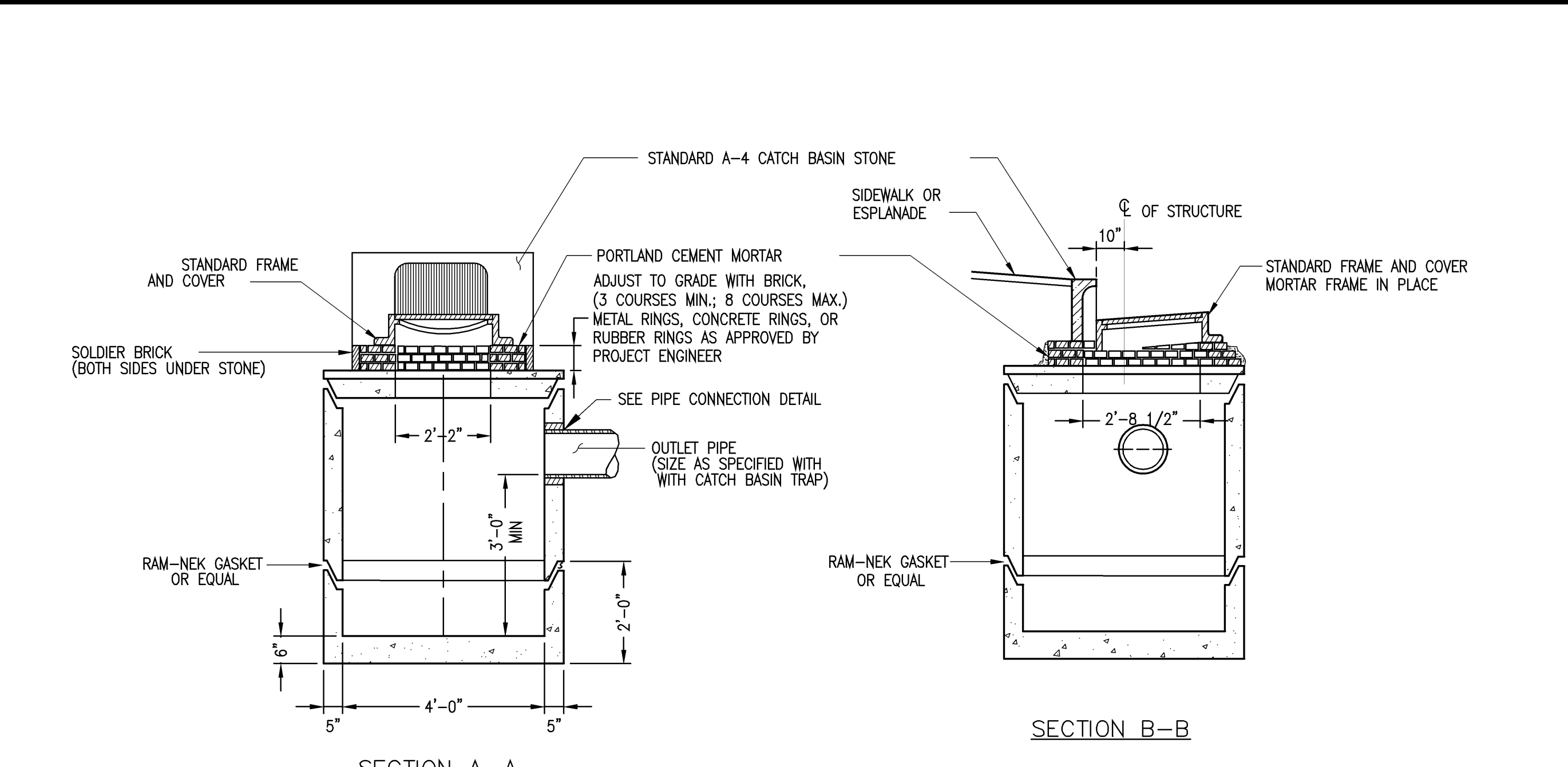
CATCH BASIN - TYPE 'D' - FRAME & COVER
SCALE: NOT TO SCALE **6**



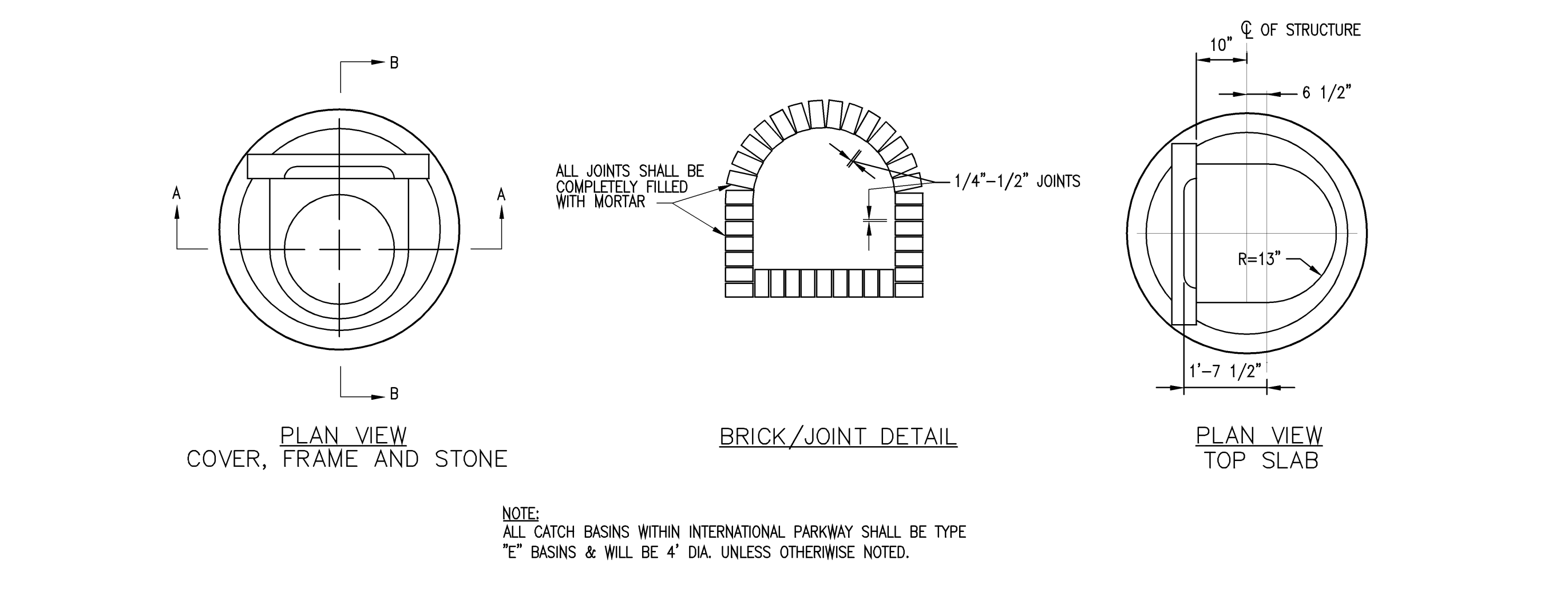
TYPE 'A' - MANHOLE FRAME & COVER
SCALE: NOT TO SCALE **7**



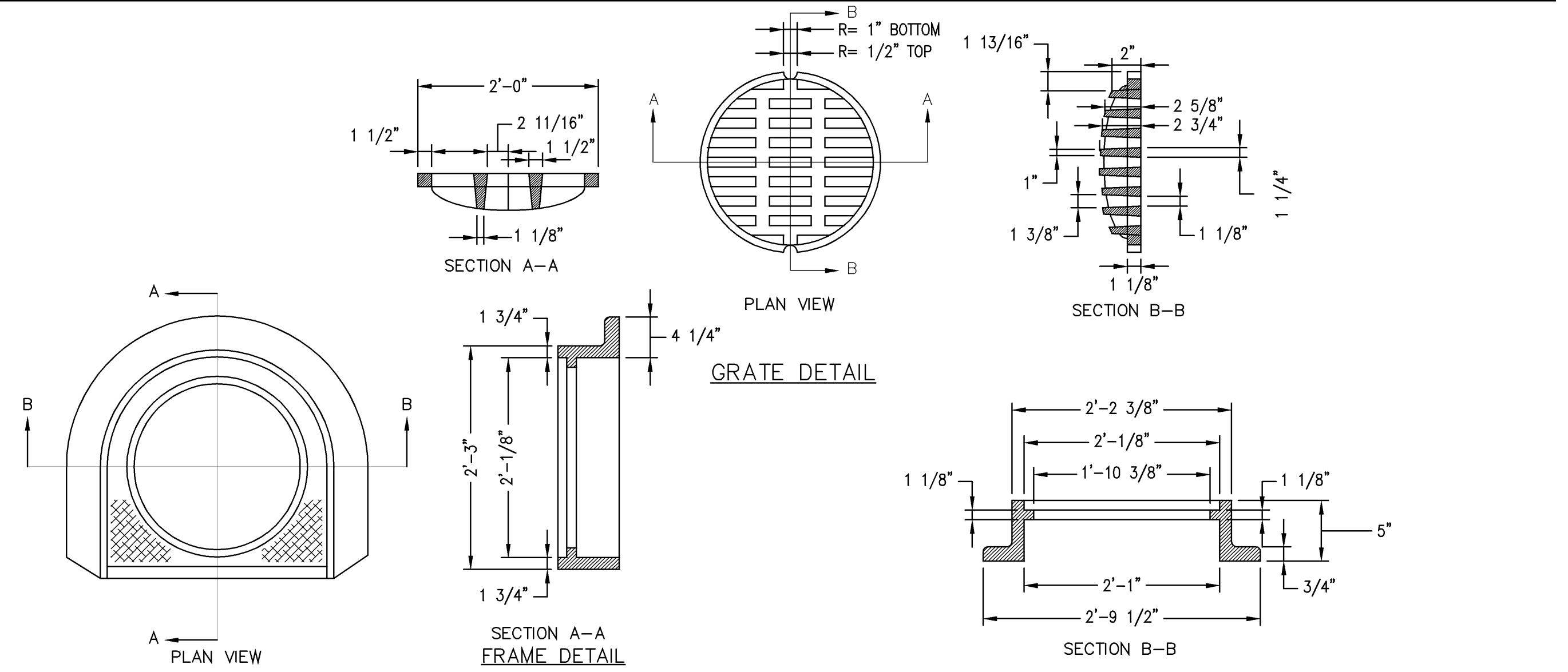
GRANITE INLET STONE - TYPE A-4
SCALE: NOT TO SCALE **9**



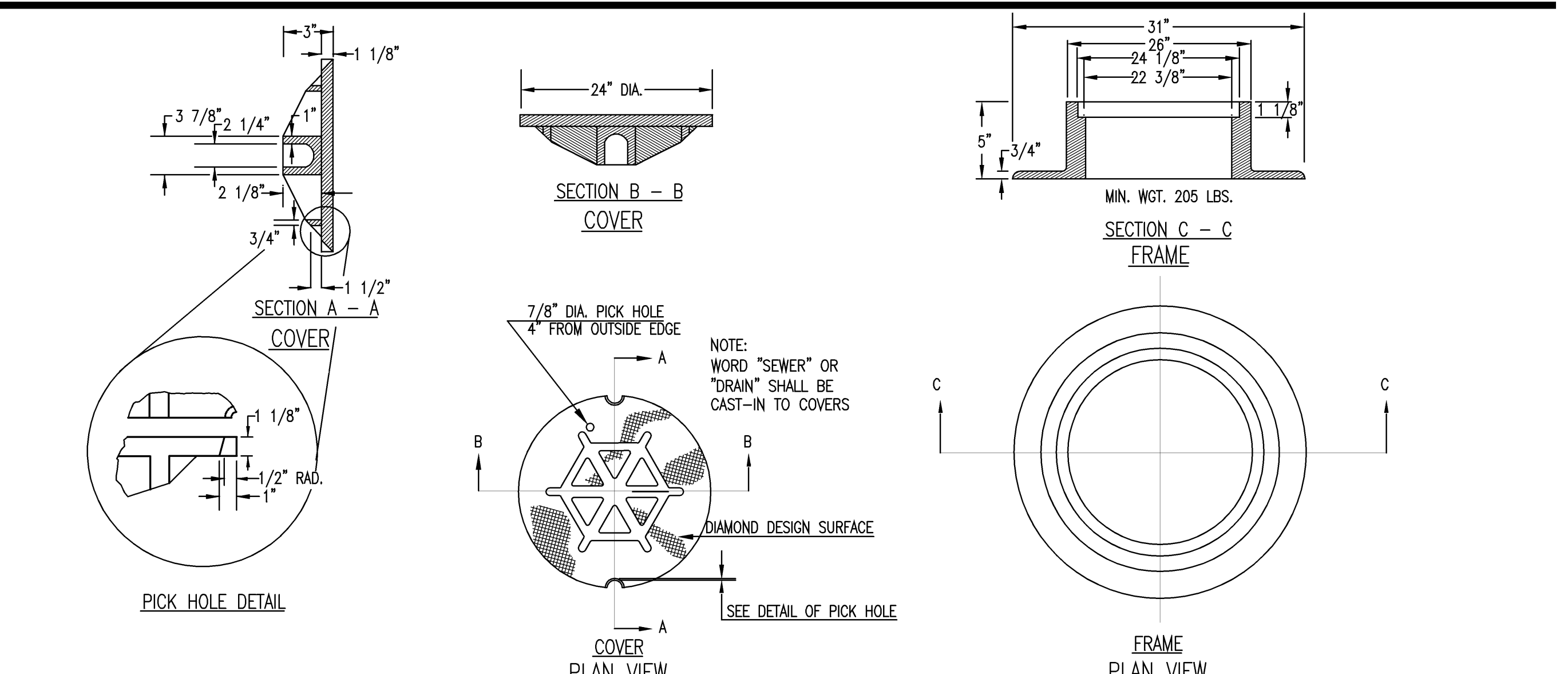
PIPE INSTALLATION
SCALE: NOT TO SCALE **1**



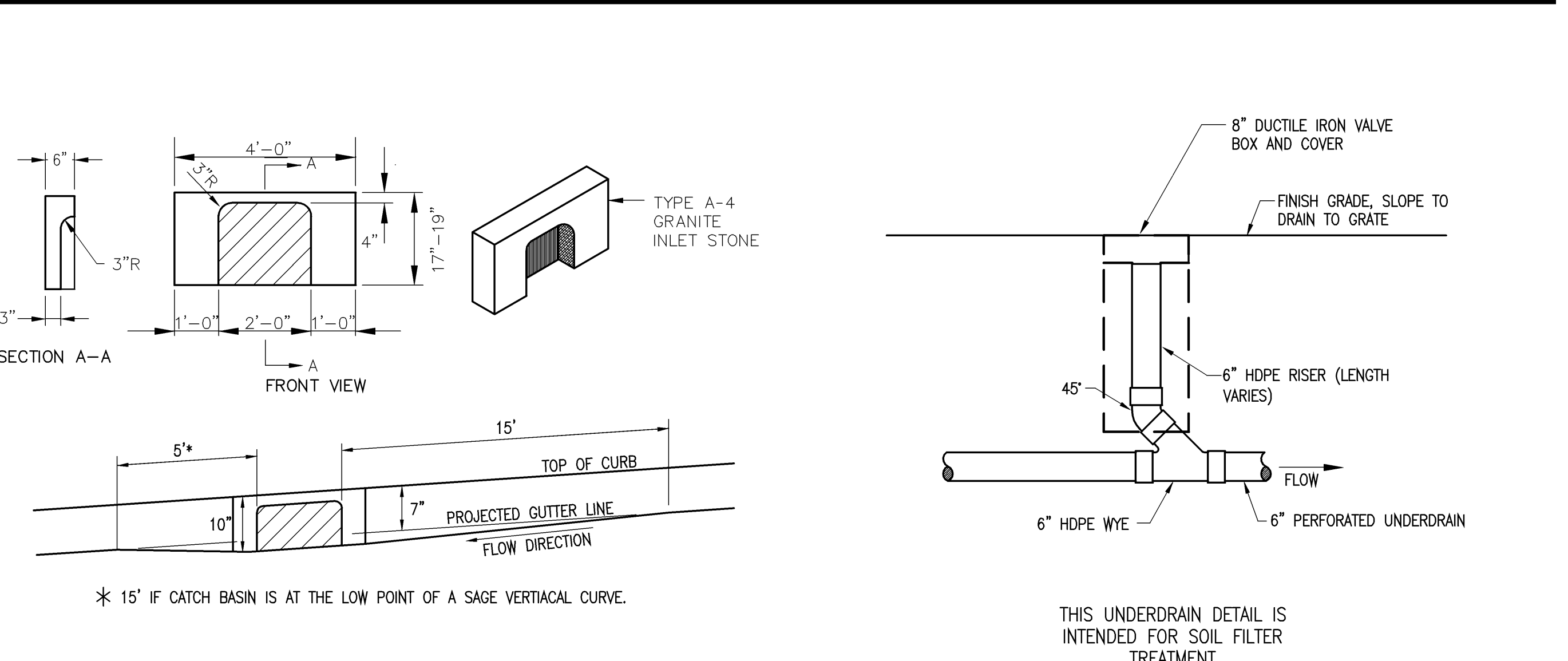
TRENCH DRAIN
SCALE: NOT TO SCALE **2**



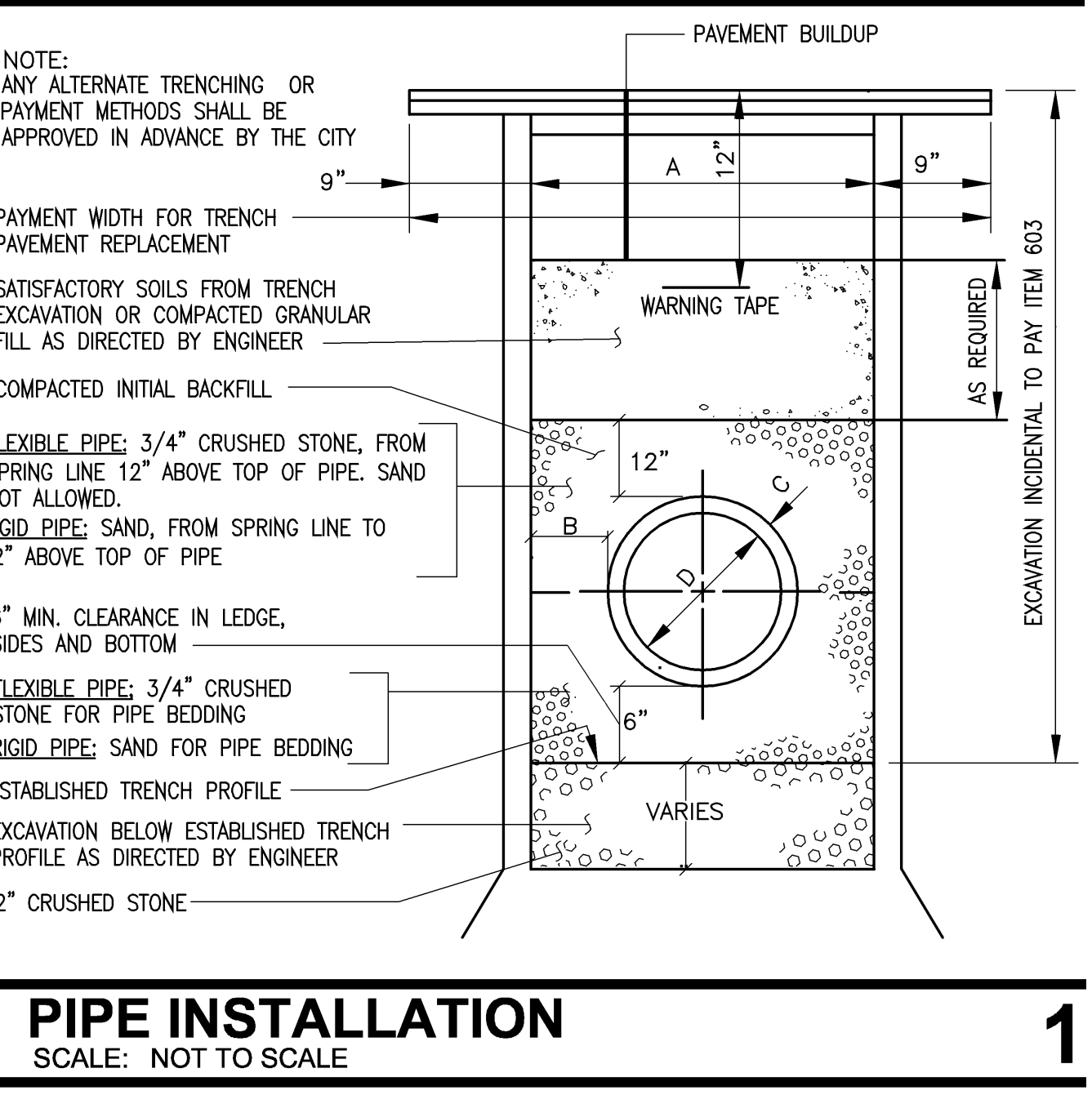
CURB UNDERDRAIN
SCALE: NOT TO SCALE **3**



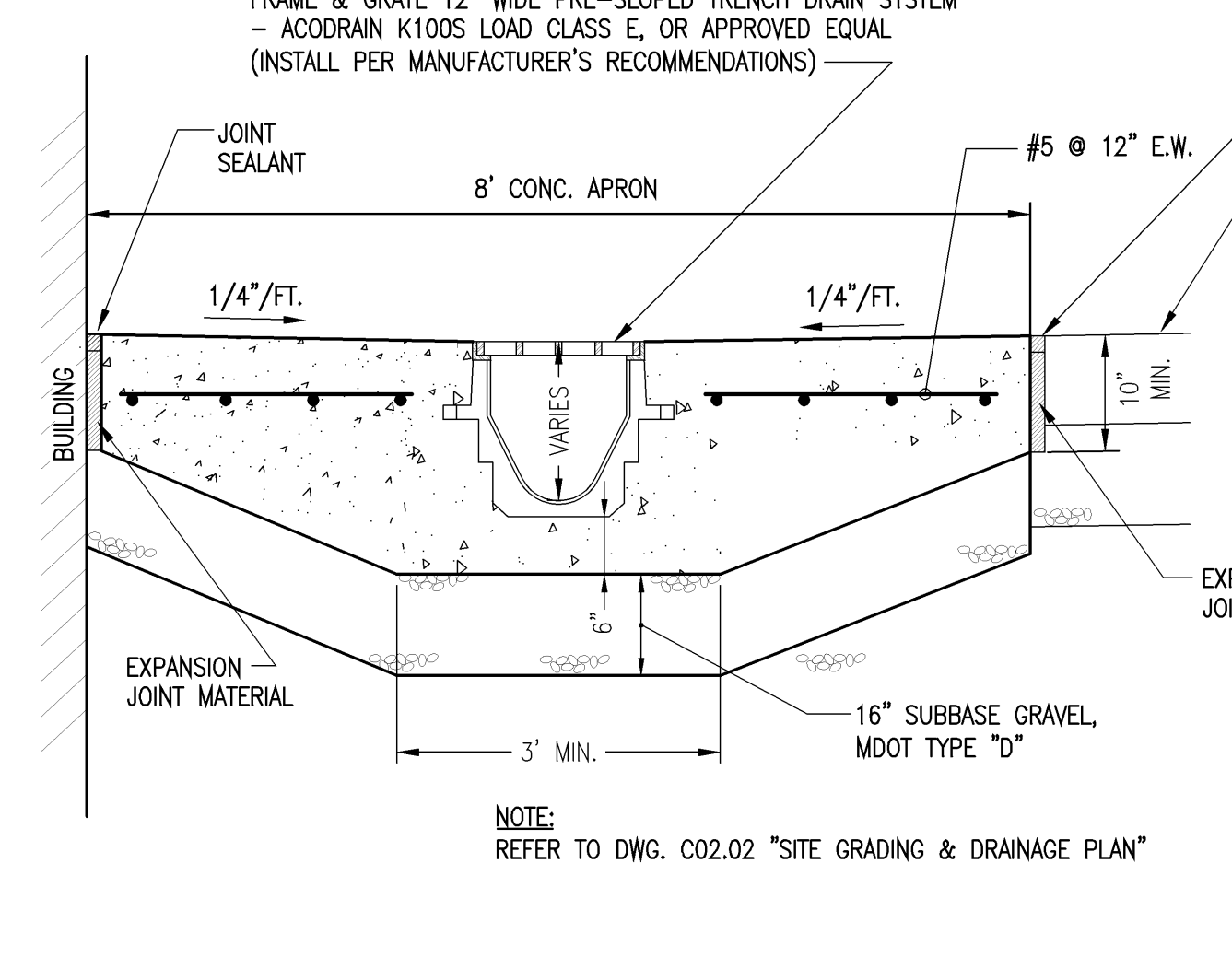
CASCO TRAP
SCALE: NOT TO SCALE **4**



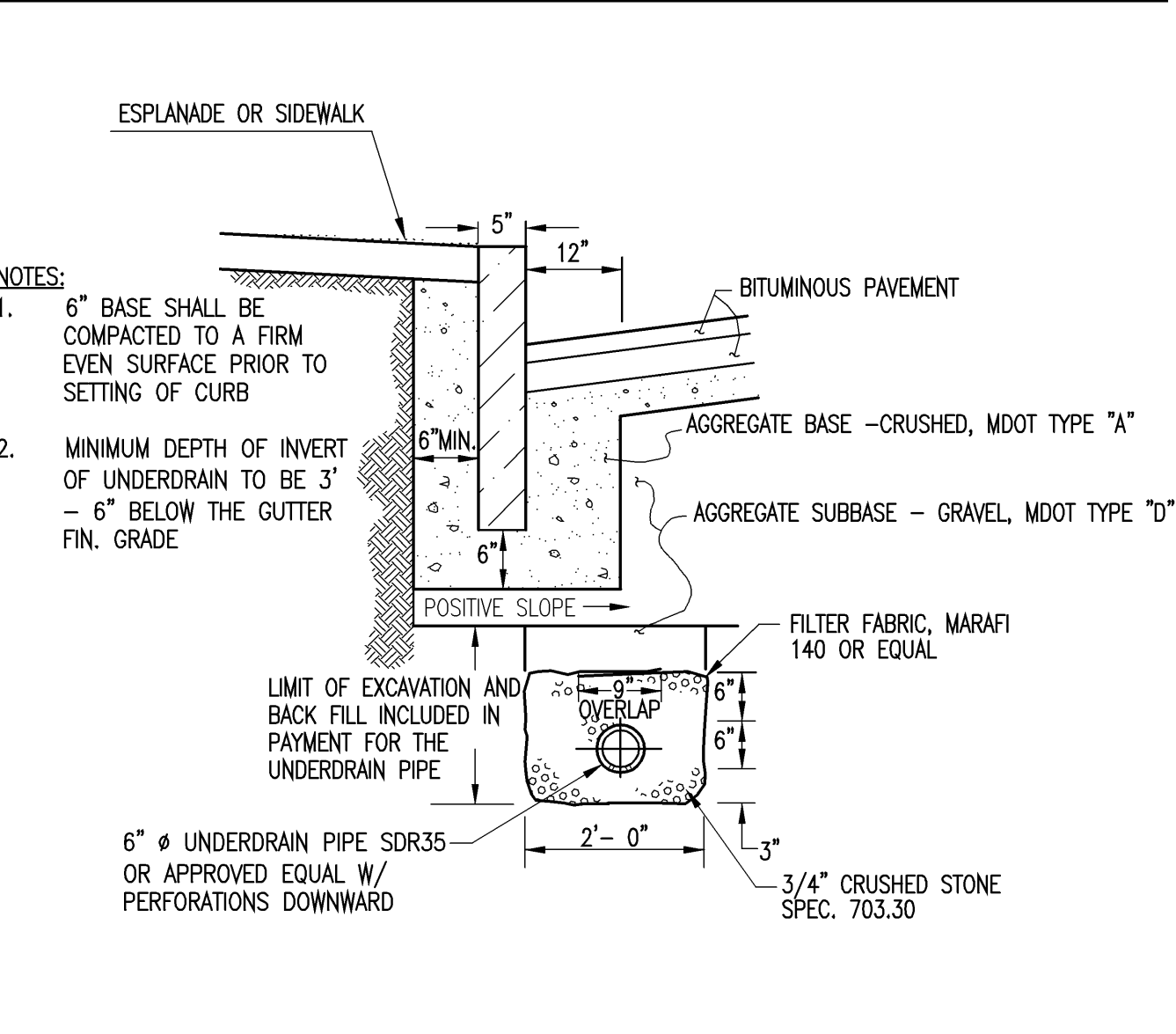
UNDERDRAIN CLEANOUT
SCALE: NOT TO SCALE **8**



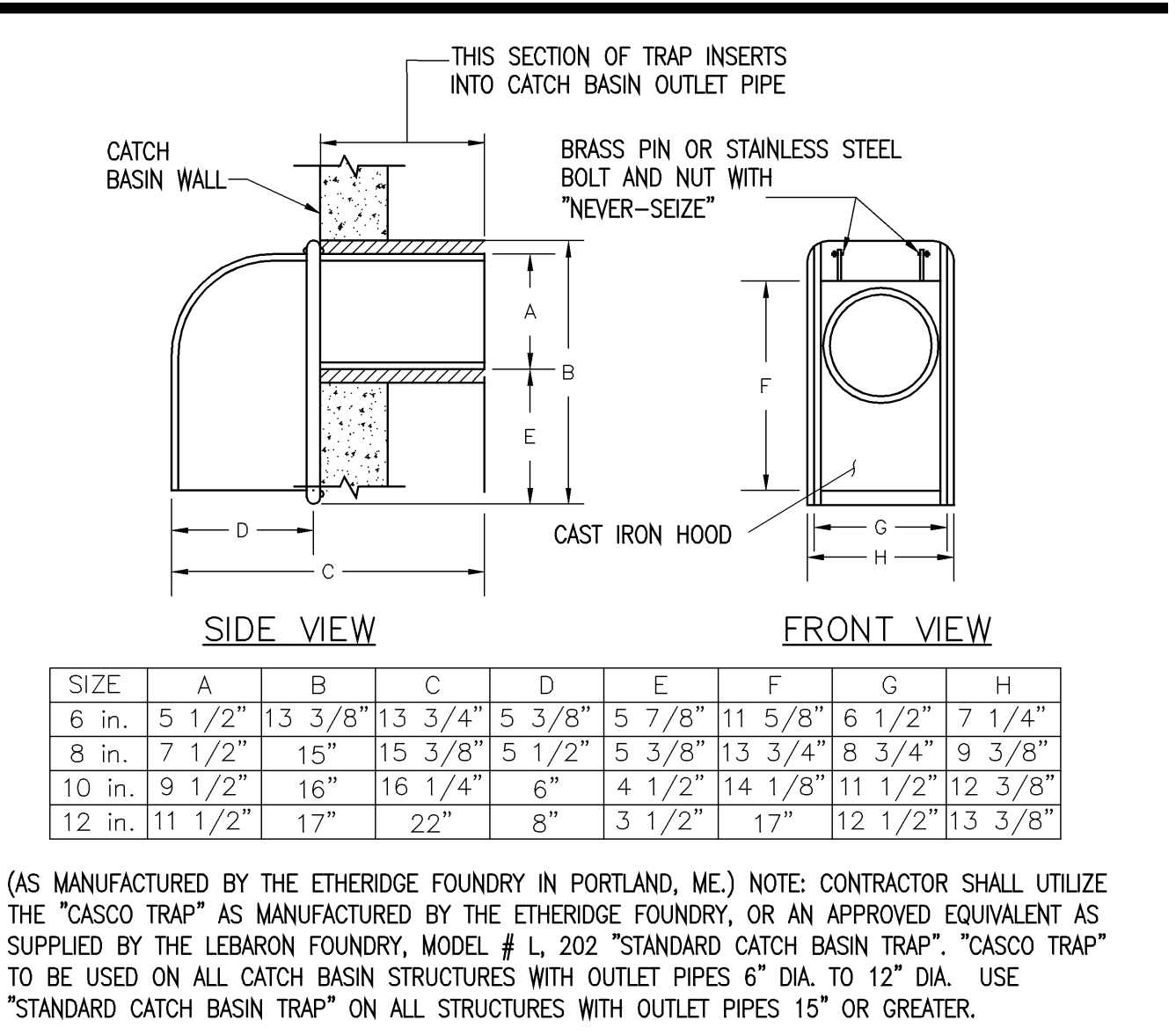
SHEET NOTES



GENERAL NOTES



GENERAL NOTES



GENERAL NOTES



GENERAL NOTES

Portland International Jetport
1001 Westbrook Street
Portland, Maine 04102

Gensler
2020 K Street, NW
Suite 200
Washington, DC 20006
Telephone 202.771.5200
Facsimile 202.872.8587

oest ASSOCIATES, INC.
381 Gopham Road, South Portland, ME 04106
P: (207) 781-1700 F: (207) 774-1246 www.oest.com
engineers • architects • surveyors • construction managers

amec
343 Gopham Road, South Portland ME 04106
P: (207) 781-1700 F: (207) 774-1246 www.amec.com

THESE DRAWINGS ARE ISSUED FOR CONSTRUCTION AND REFLECT ALL AMEC ISSUED BULLETINS AND SKETCHES.

Issue	Date & Issue Description	By	Check
1	09/22/08	W/W	AML
2	12/03/08	W/W	AML
3	01/23/09	W/W	AML
4	10/26/09	W/W	FEM
5	09/01/11	W/W	SDH

PROJECT INFORMATION

Project Name: P/W Terminal Enhancement

Project Number: 08.8395.000
CAD File Name: T:\5330101\SHEETS\C12.03.DWG

Date: 09/01/11

Scale: AS NOTED

C12.03

©2009 Gensler