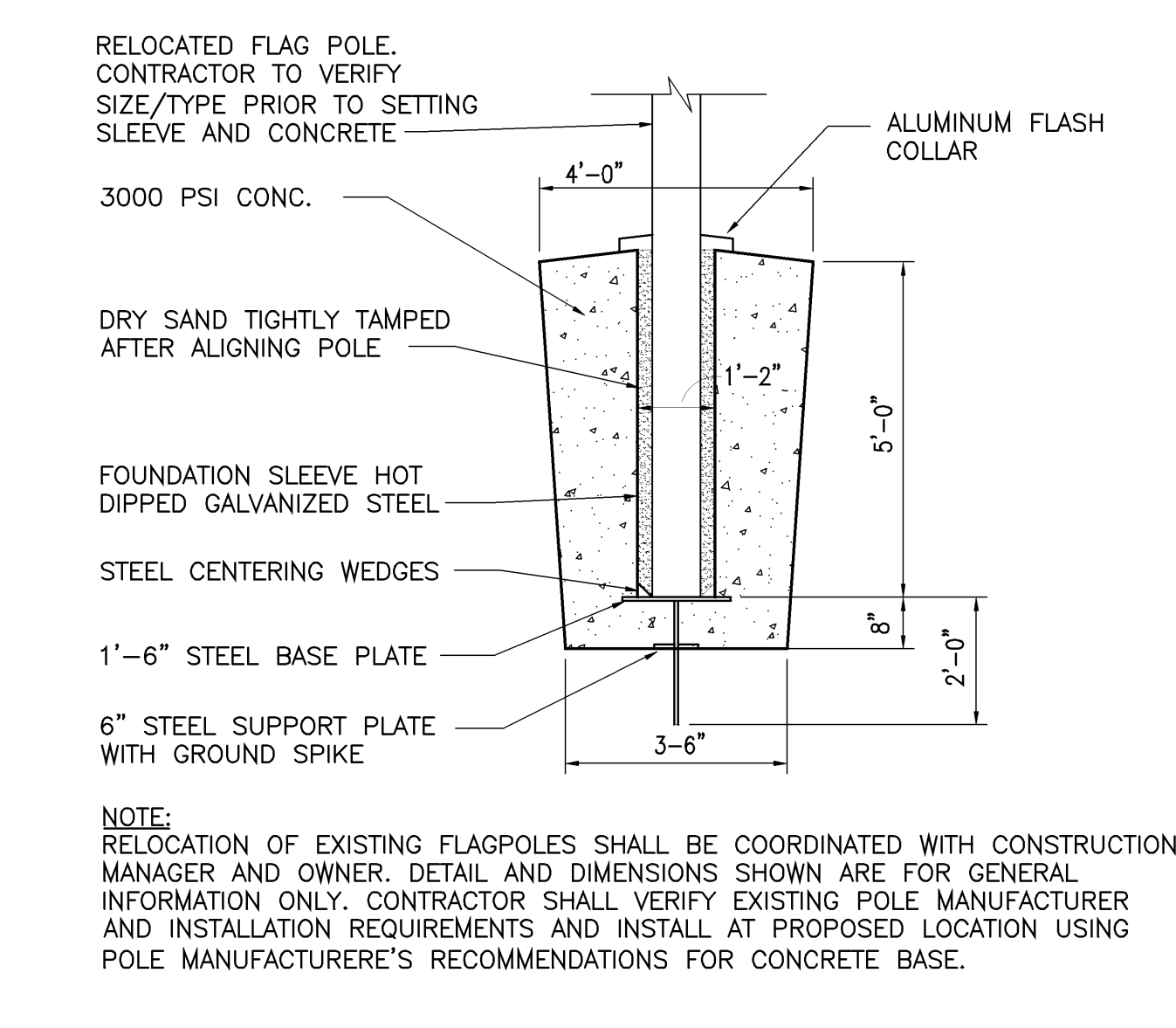
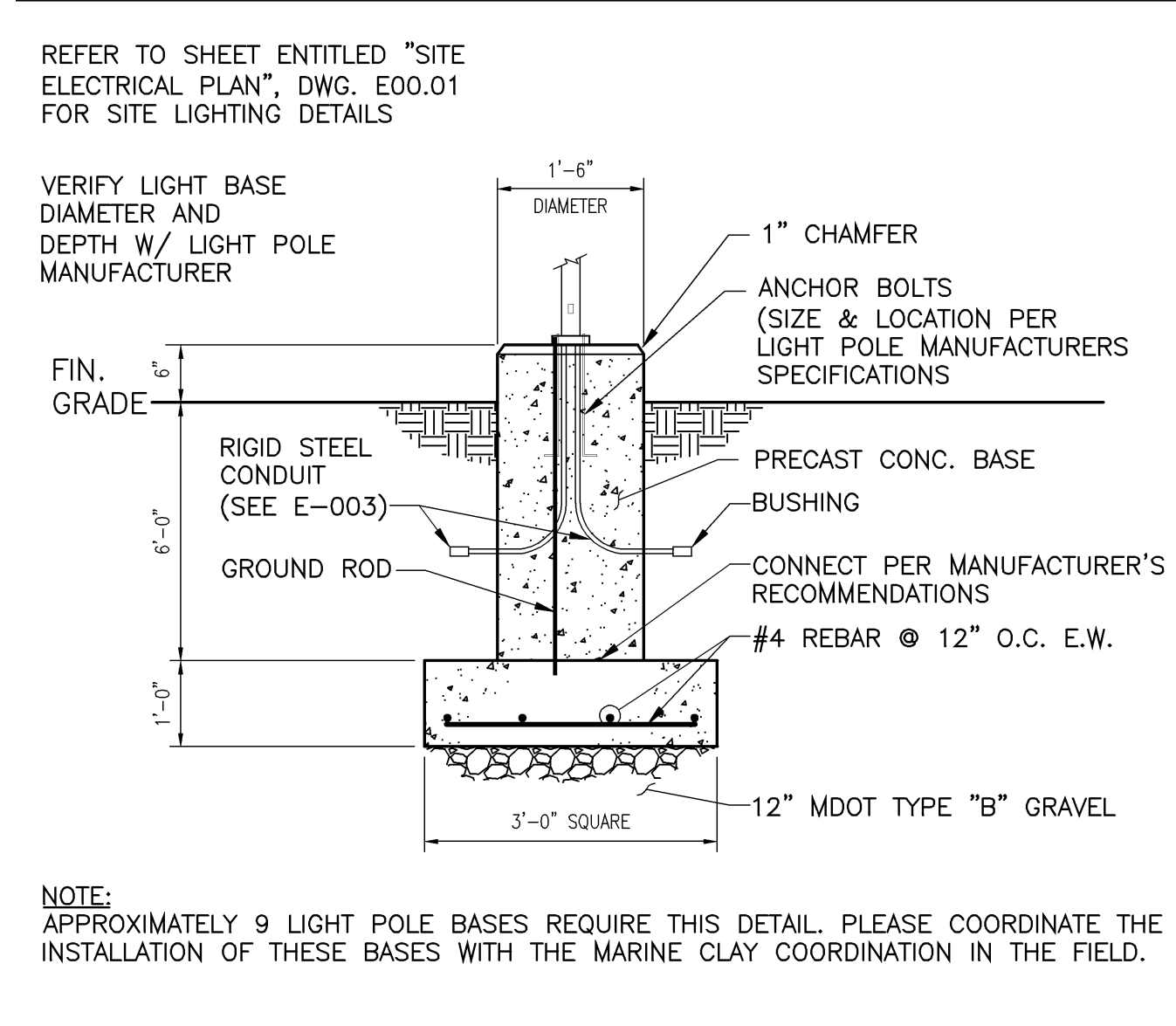


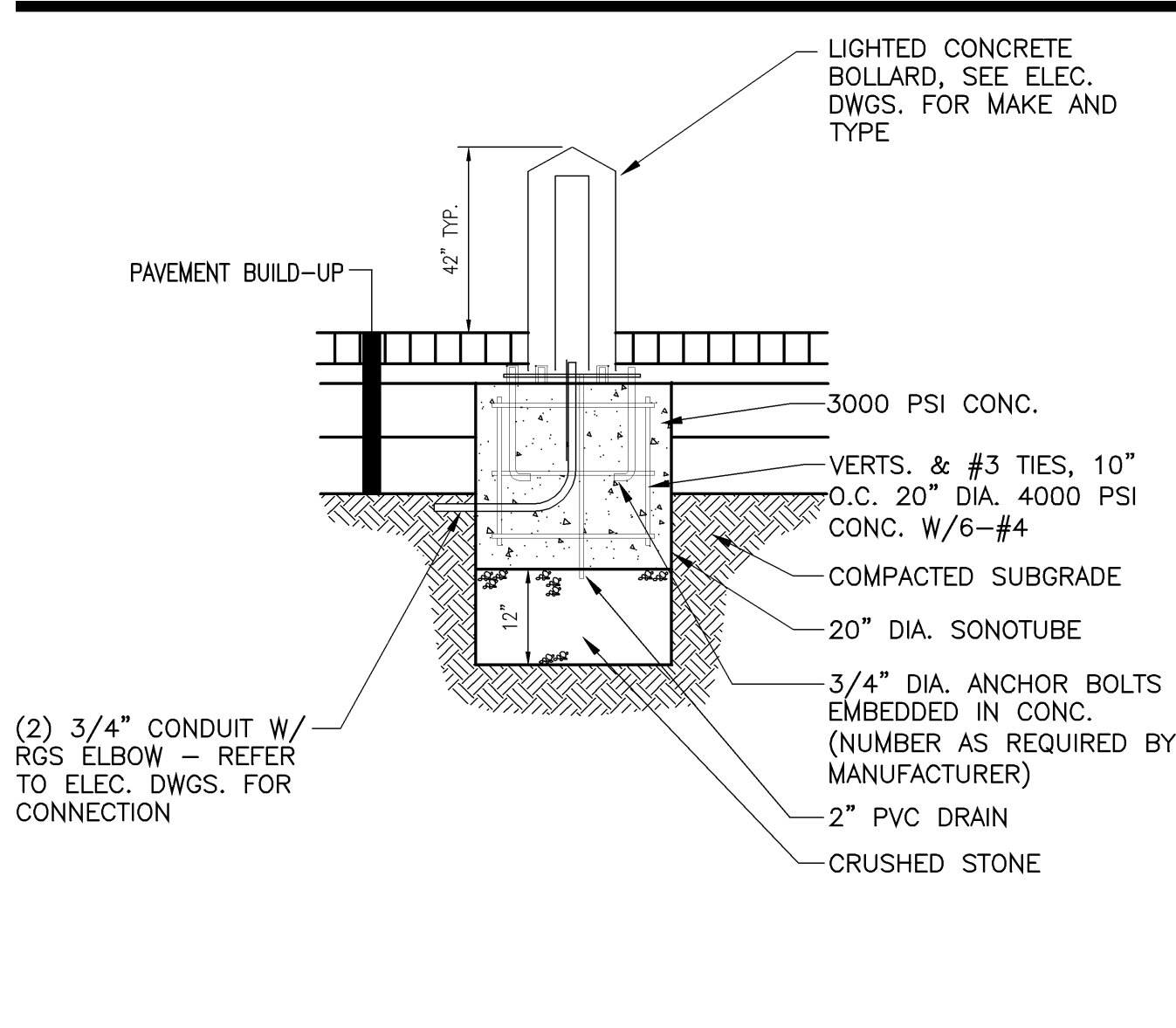
**PAVEMENT MARKINGS**  
SCALE: NOT TO SCALE **18**



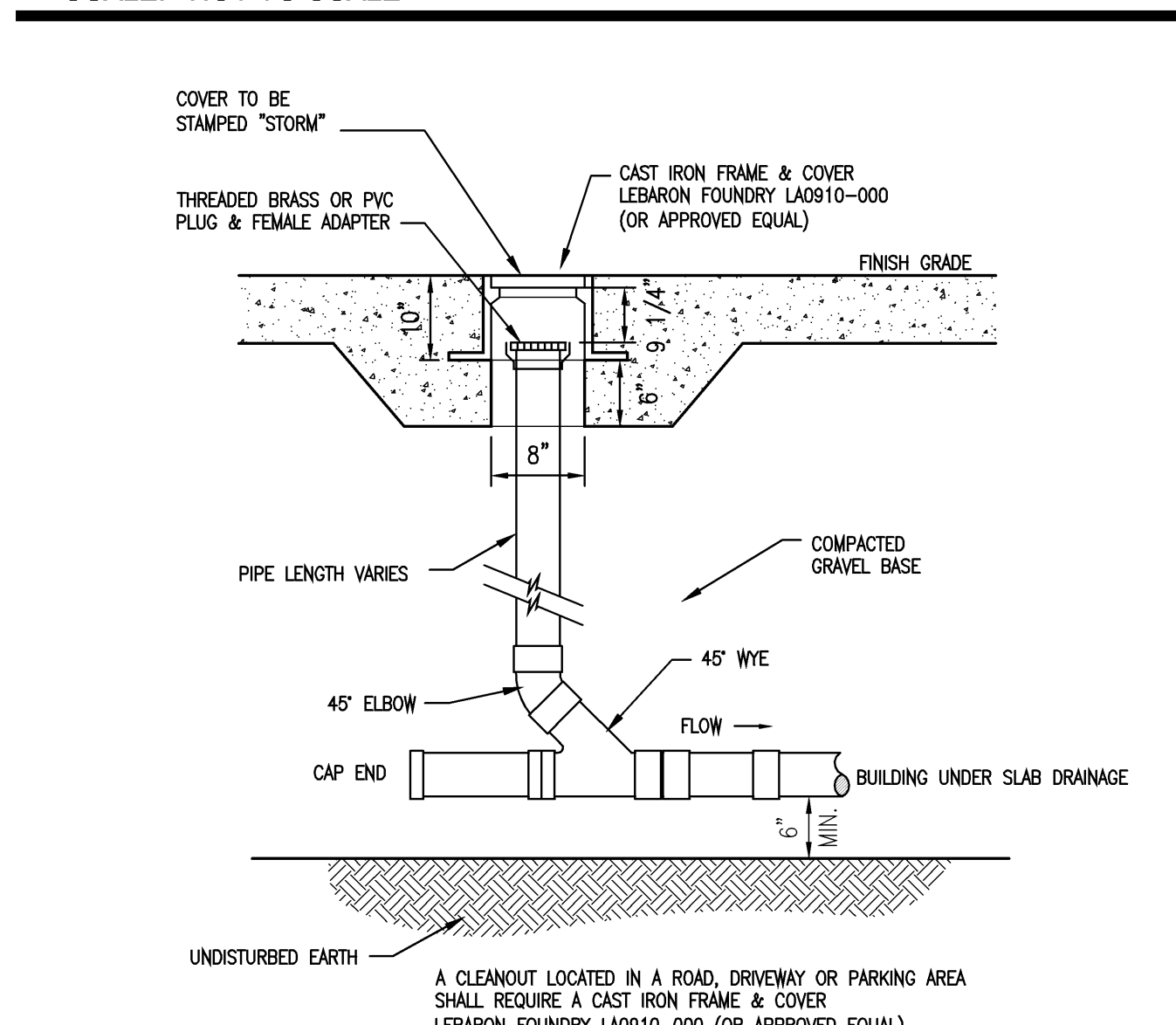
**FLAG POLE BASE**  
SCALE: NOT TO SCALE **19**



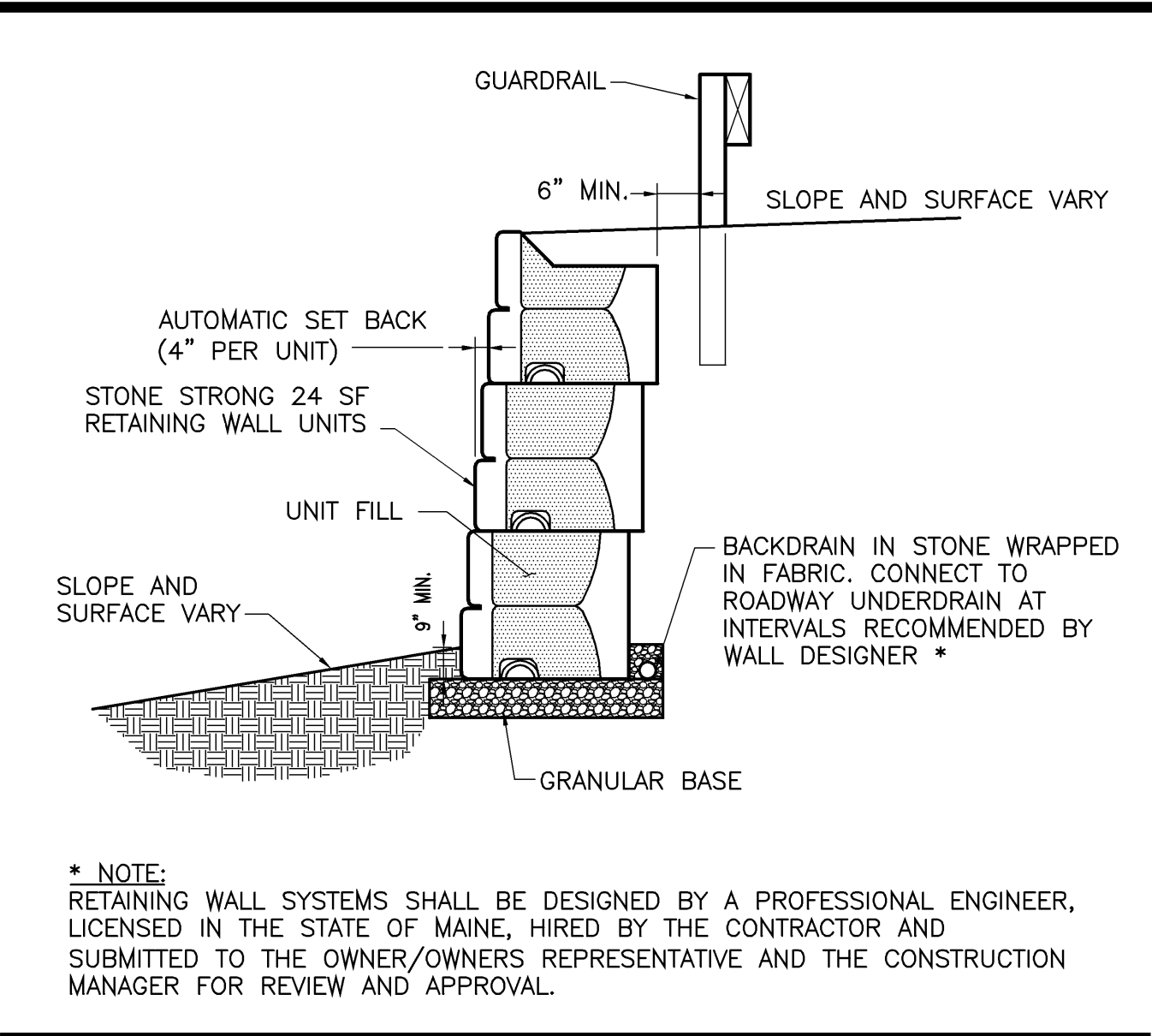
**LIGHT STANDARD BASE**  
SCALE: NOT TO SCALE **20**



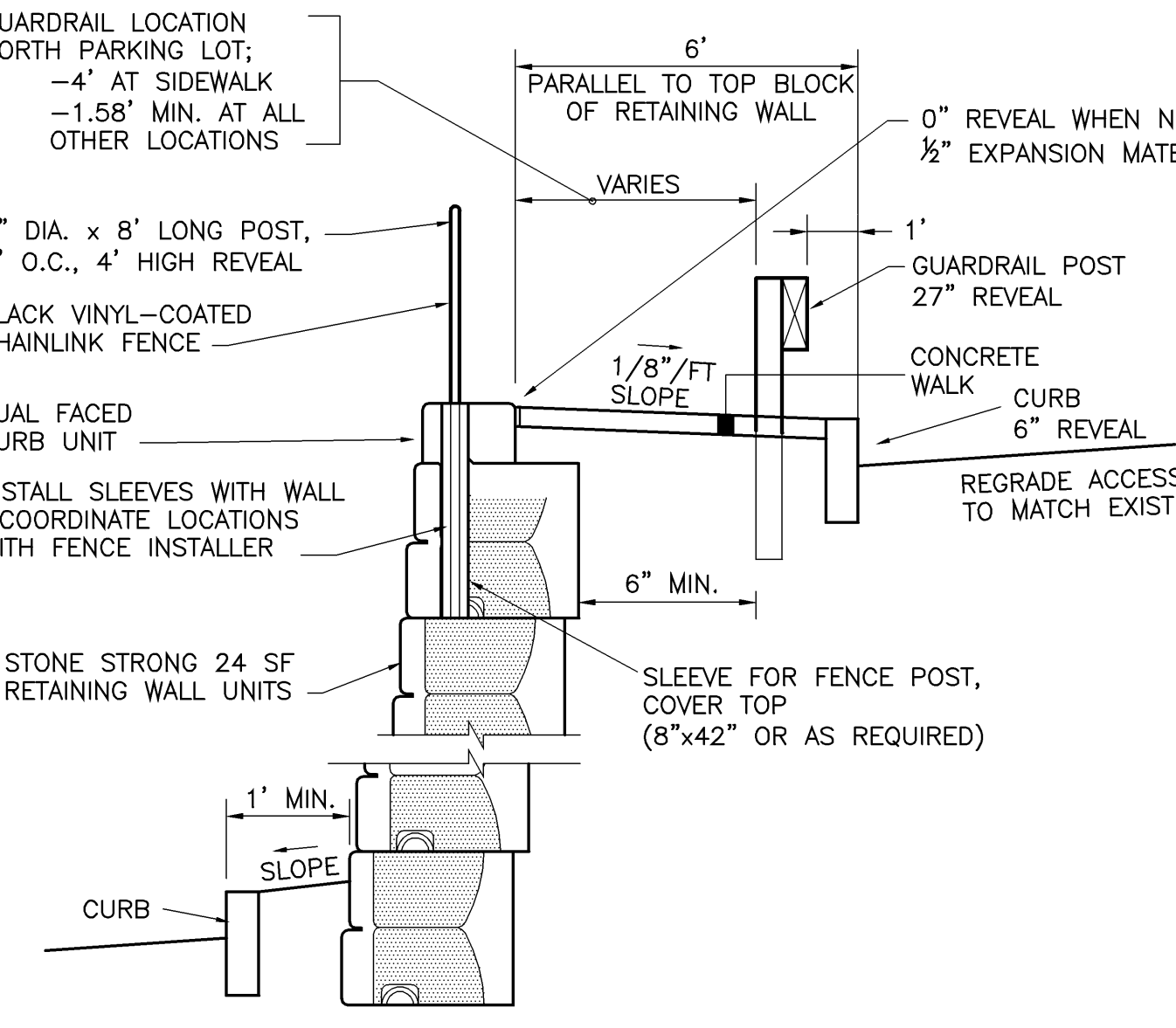
**BOLLARD LIGHT BASE**  
SCALE: NOT TO SCALE **21**



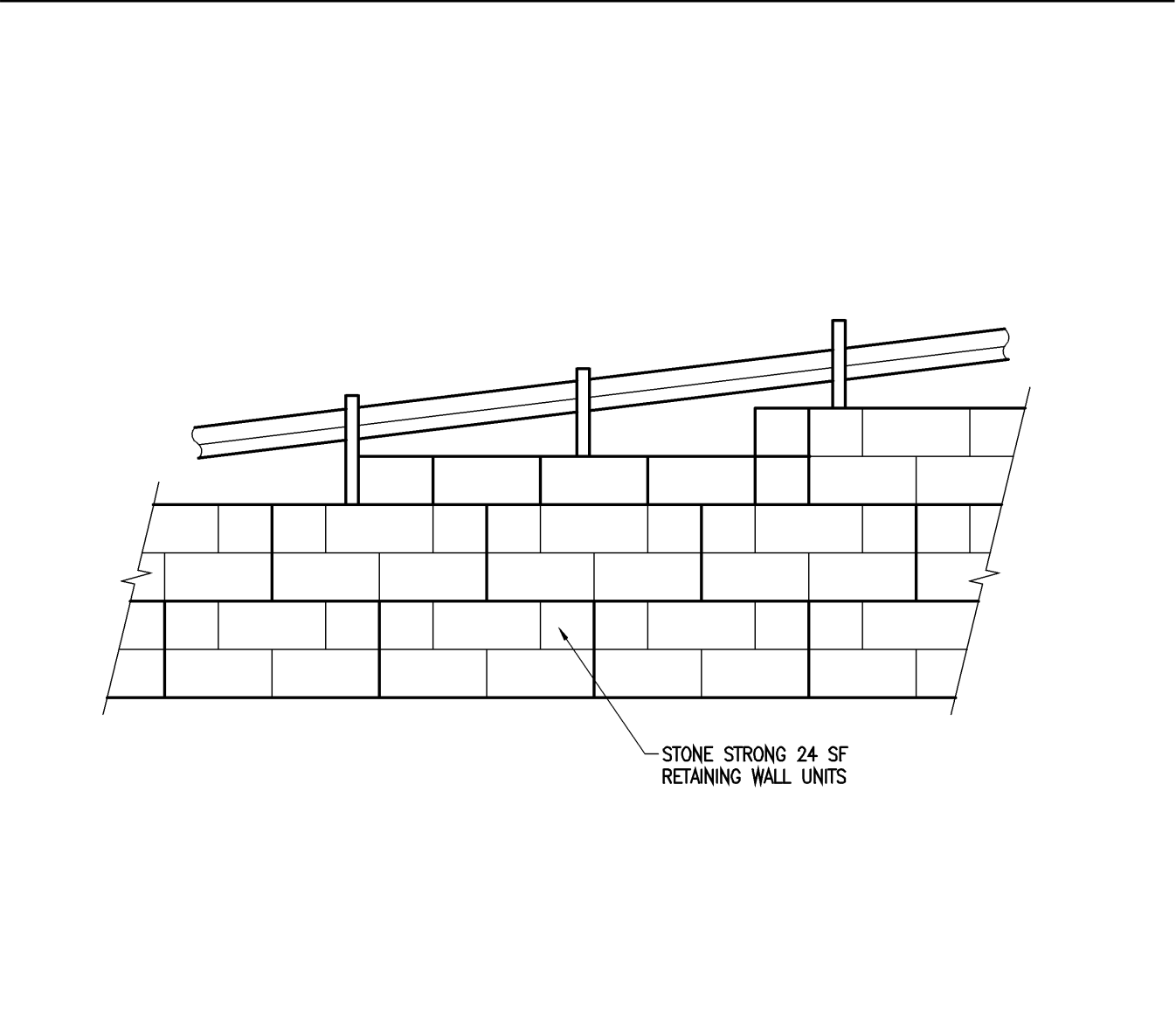
**FOUNDATION DRAIN CLEANOUT**  
SCALE: NOT TO SCALE **22**



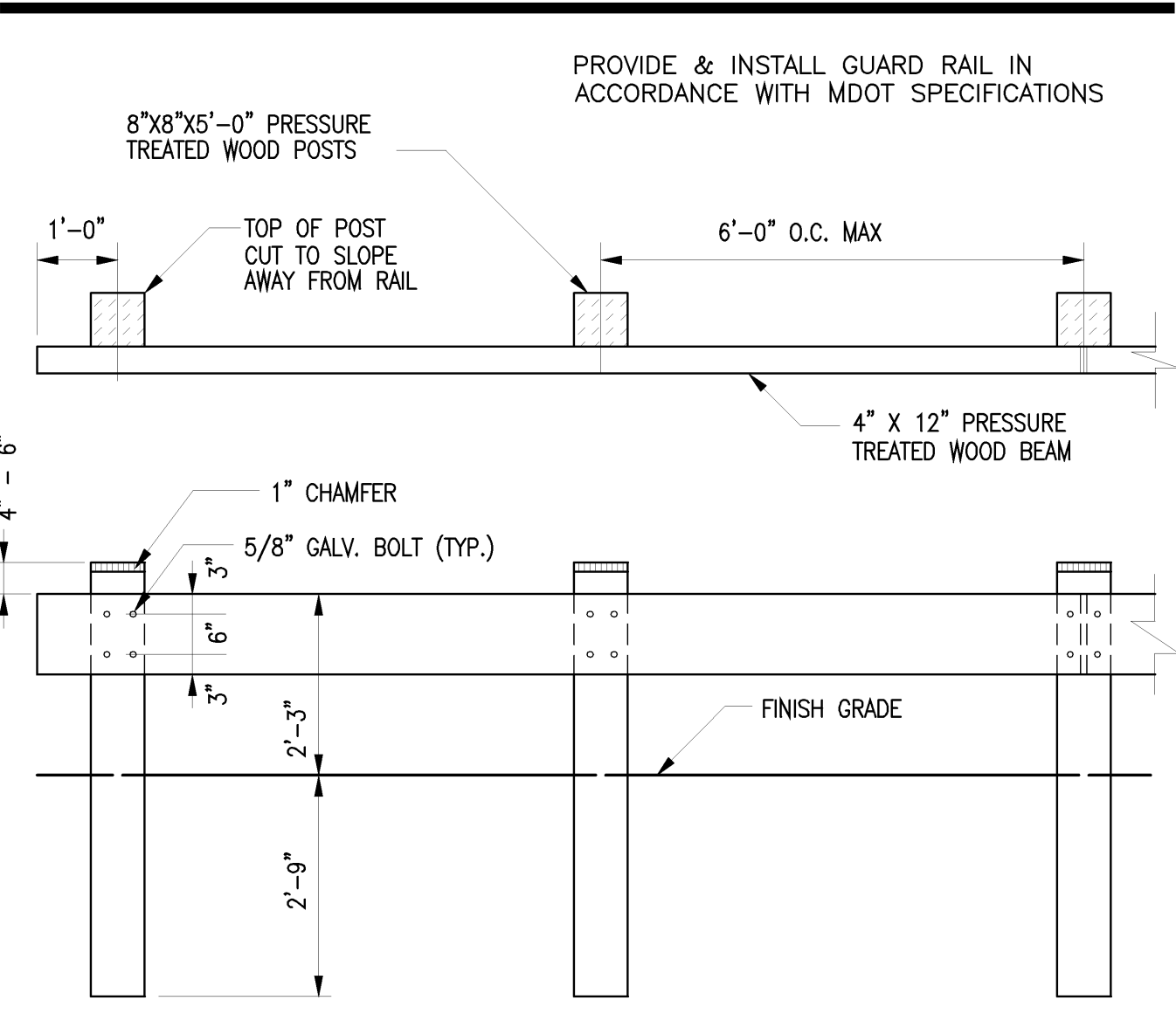
**RETAINING WALL**  
SCALE: NOT TO SCALE **13**



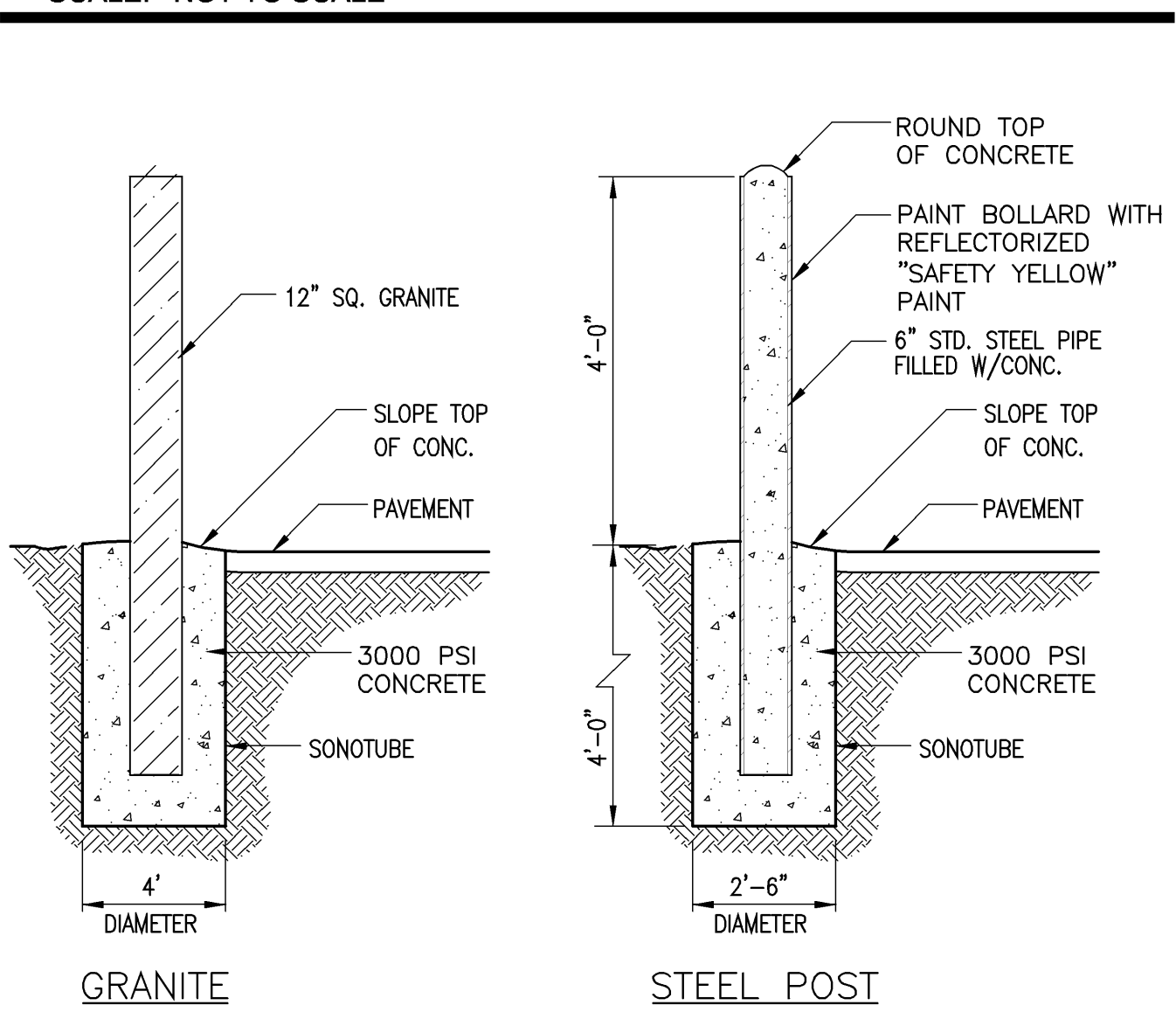
**RETAINING WALL GUARD RAIL**  
SCALE: NOT TO SCALE **14**



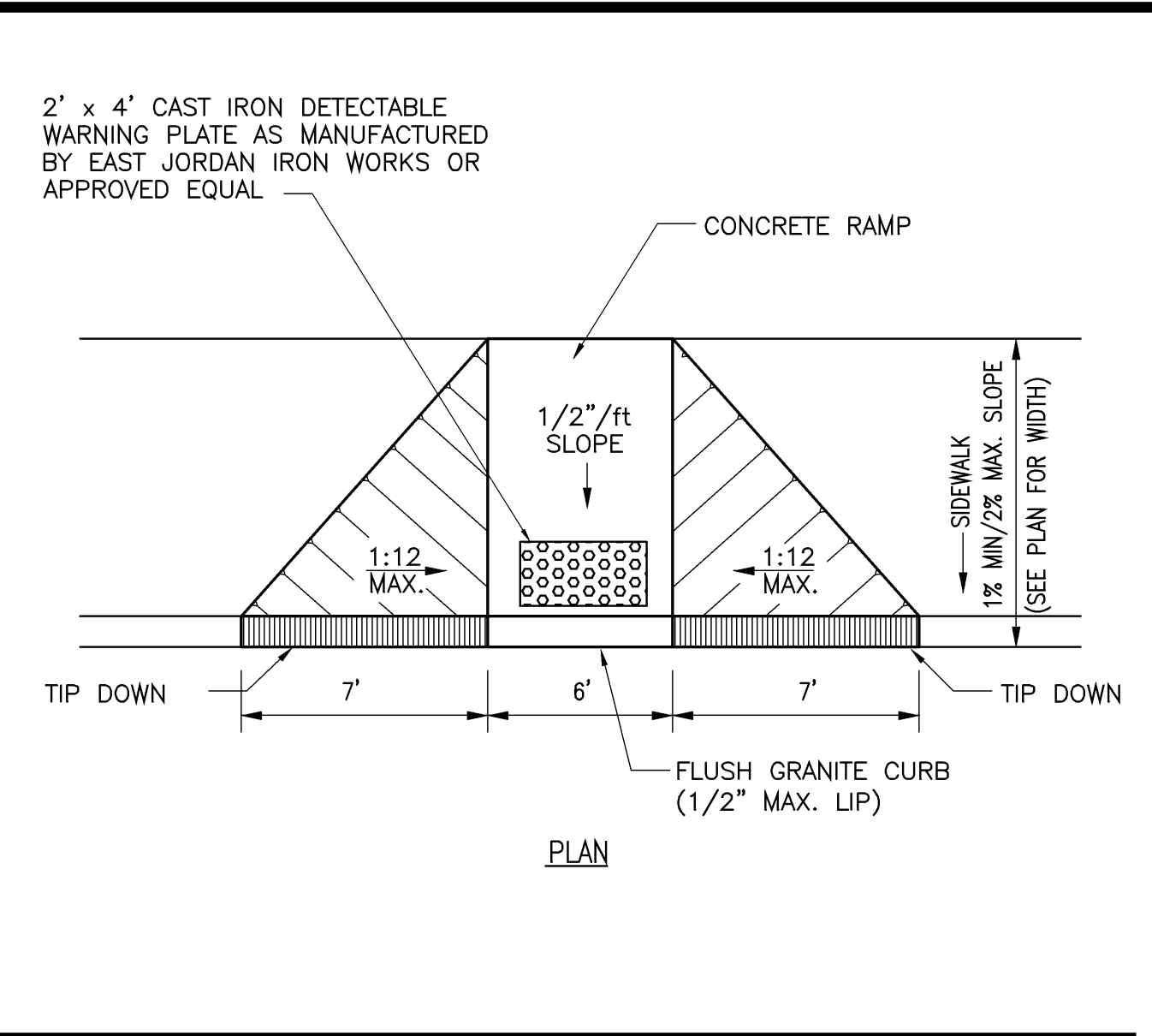
**GUARD RAIL CONFIGURATION**  
SCALE: NOT TO SCALE **15**



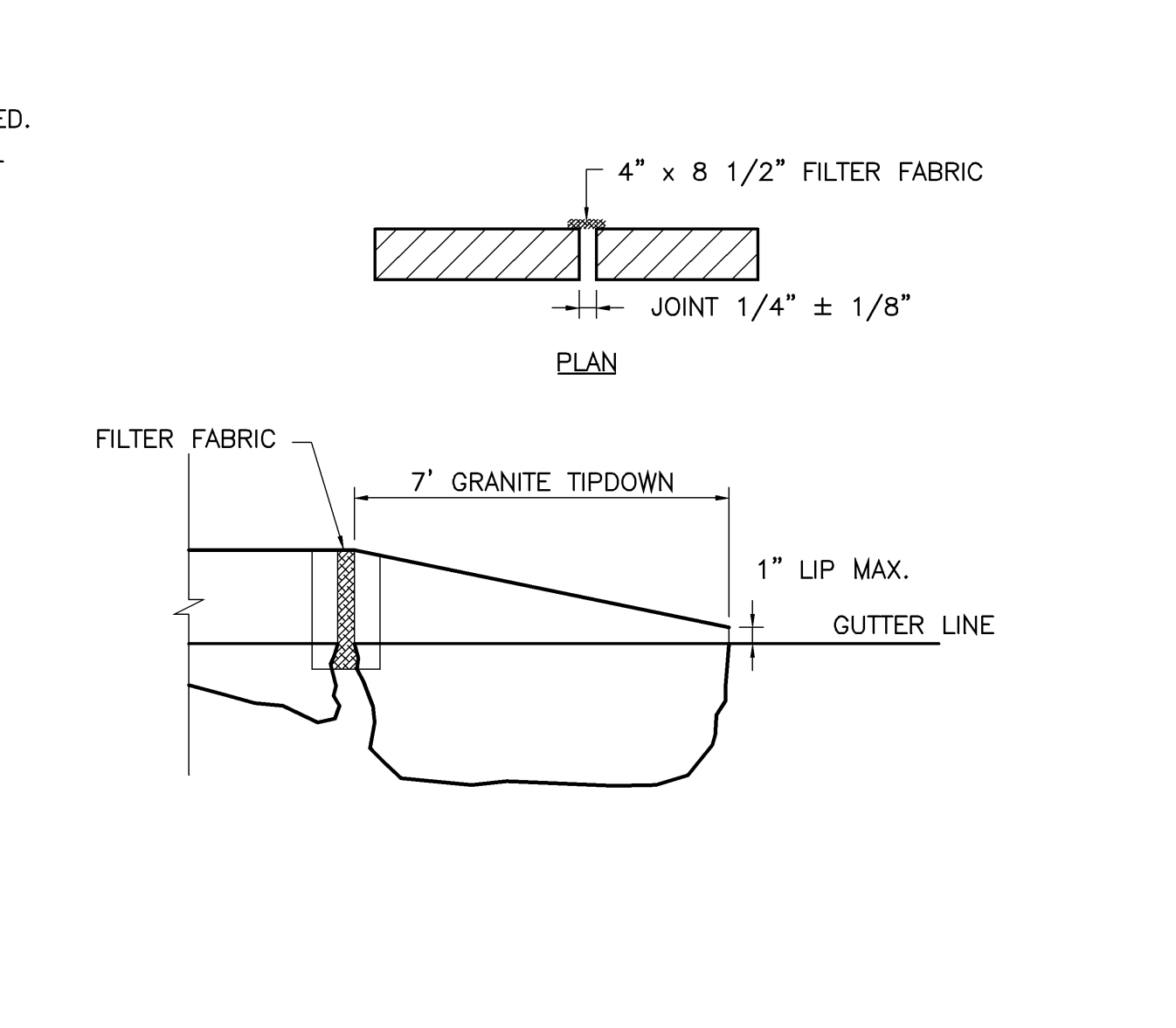
**GUARD RAIL**  
SCALE: NOT TO SCALE **16**



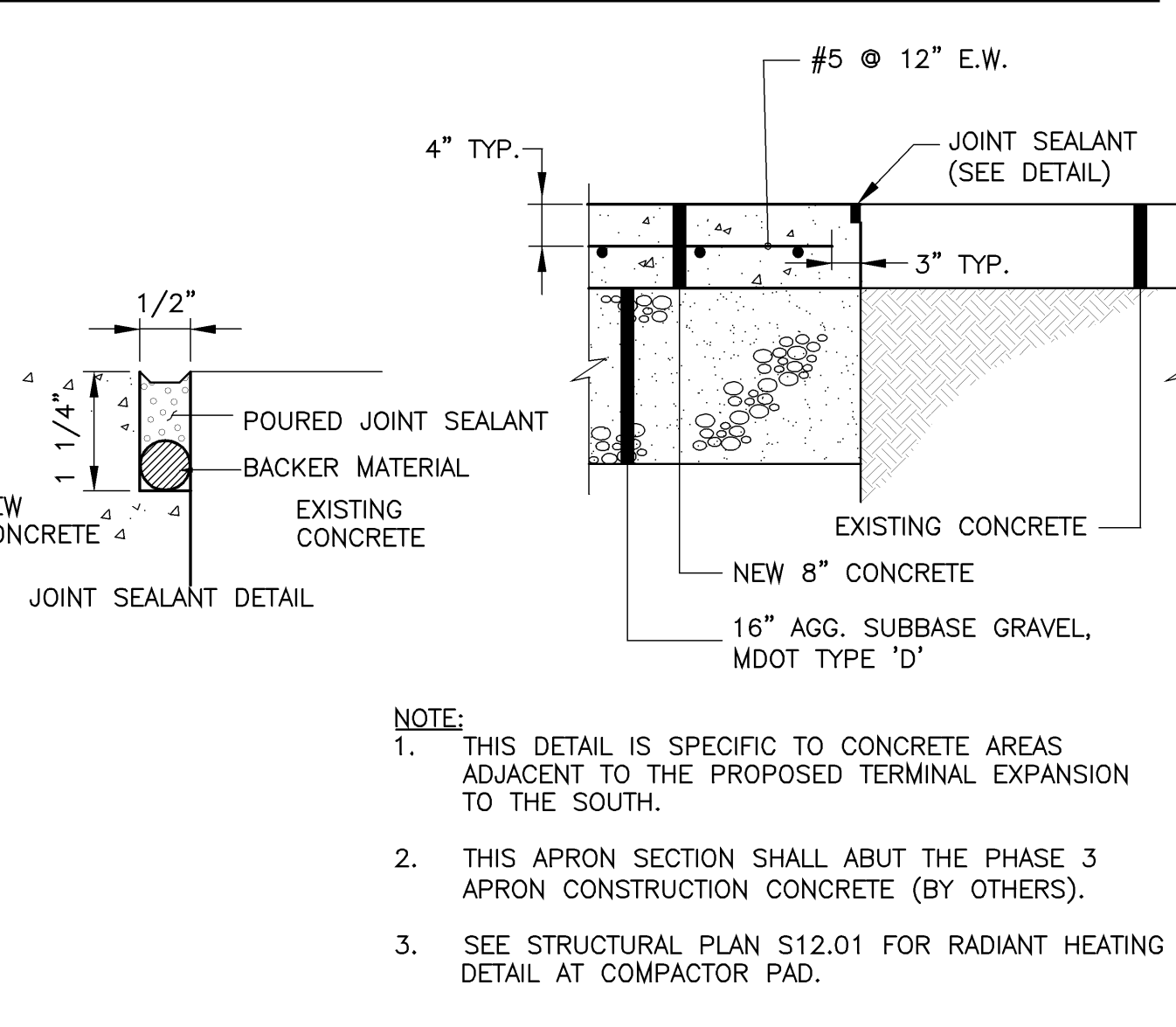
**SITE BOLLARDS**  
SCALE: NOT TO SCALE **17**



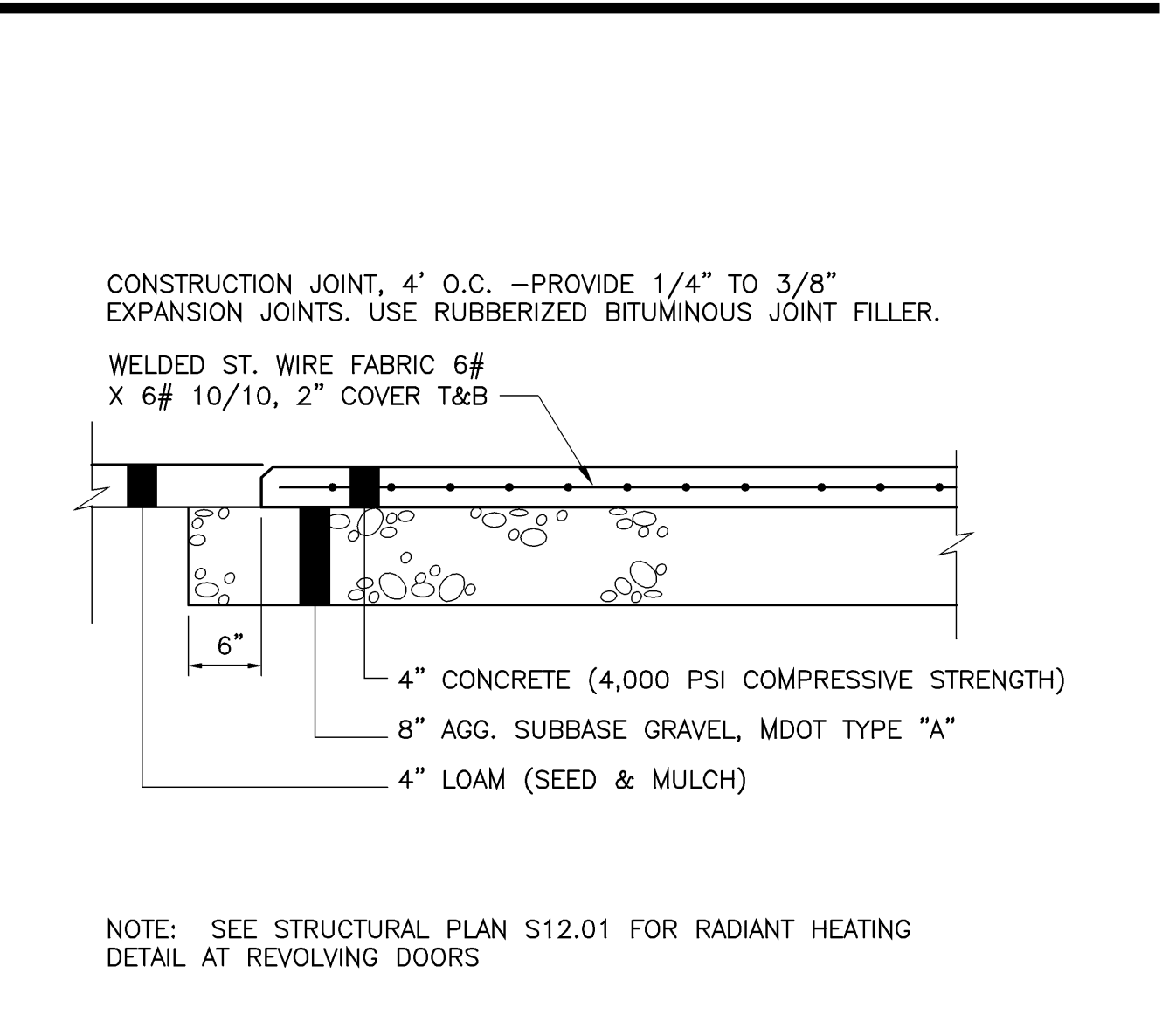
**PEDESTRIAN RAMP**  
SCALE: NOT TO SCALE **8**



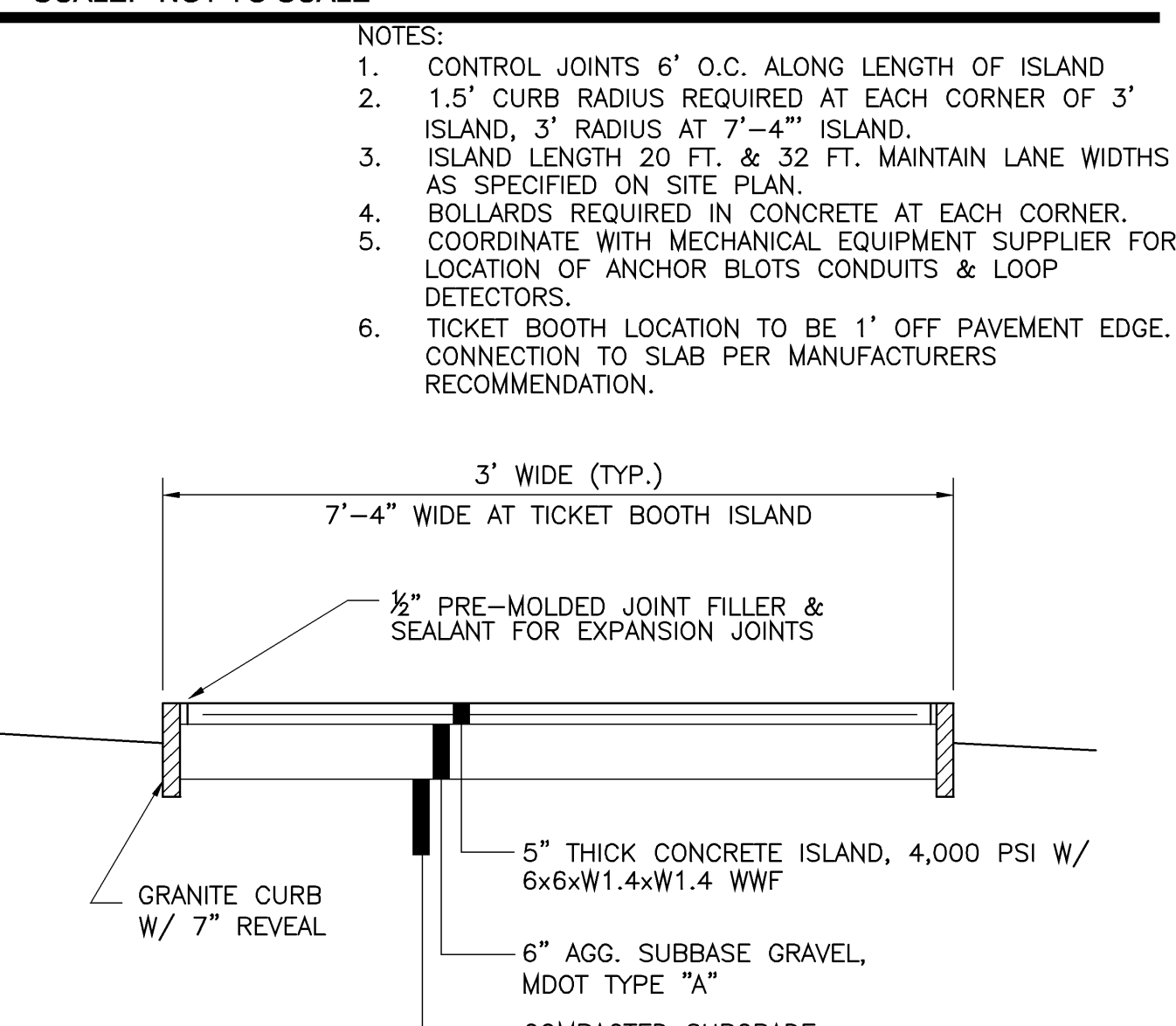
**TIP DOWN CURB**  
SCALE: NOT TO SCALE **9**



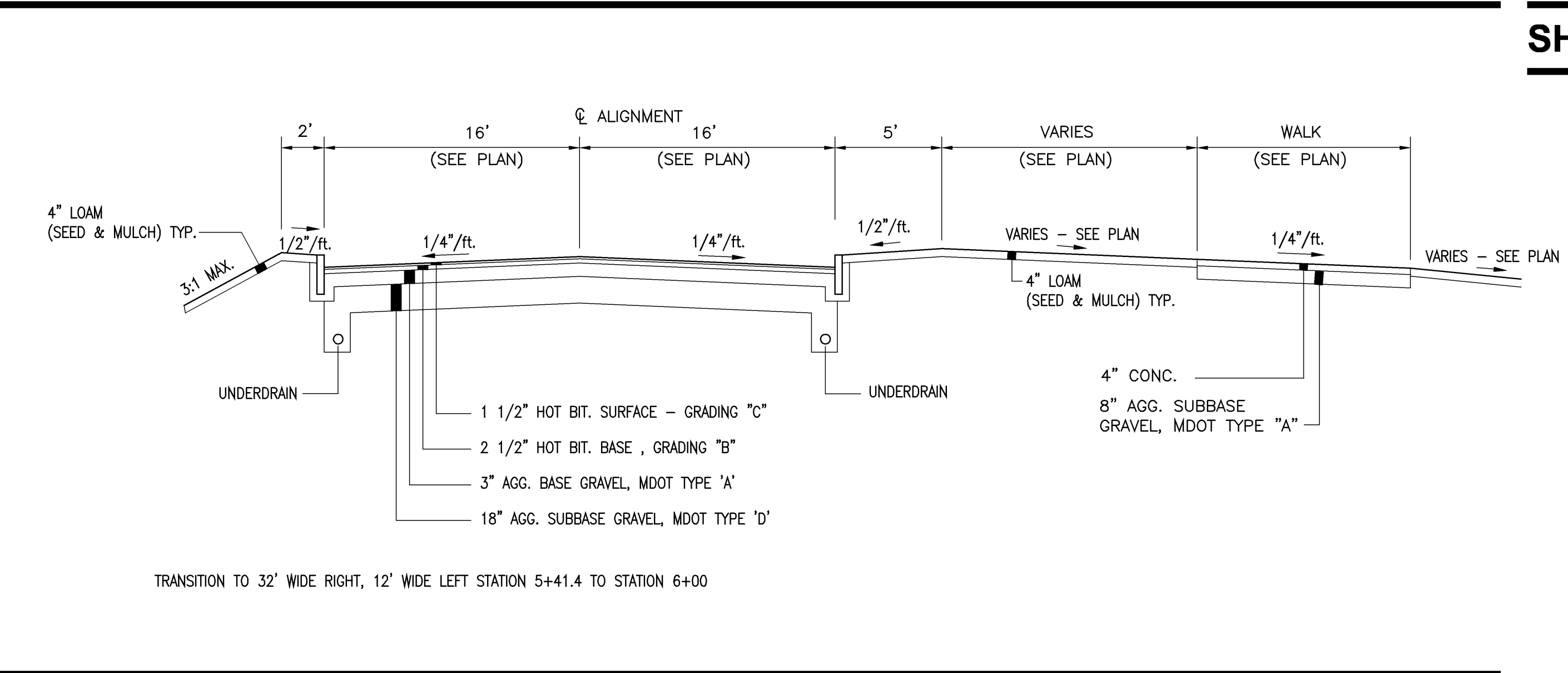
**CONCRETE APRONS**  
SCALE: NOT TO SCALE **10**



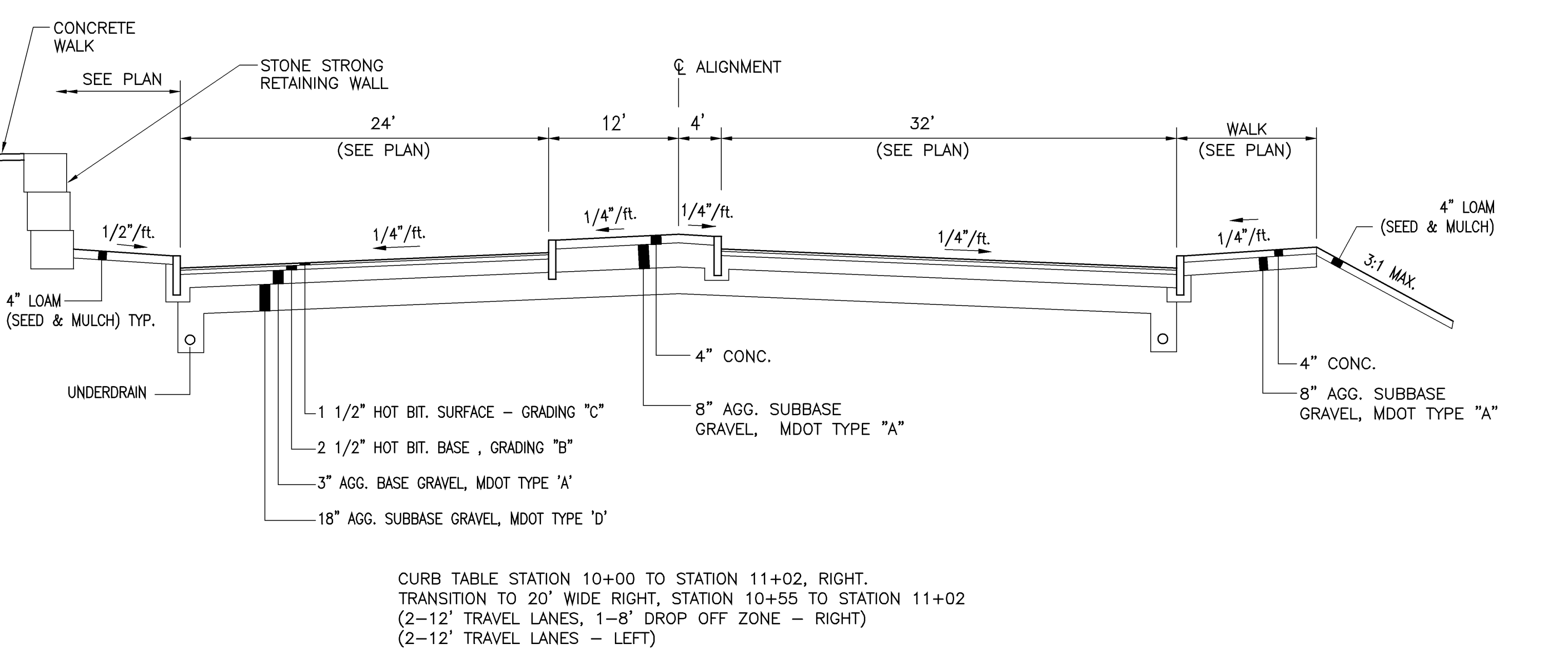
**CONCRETE APRONS**  
SCALE: NOT TO SCALE **10**



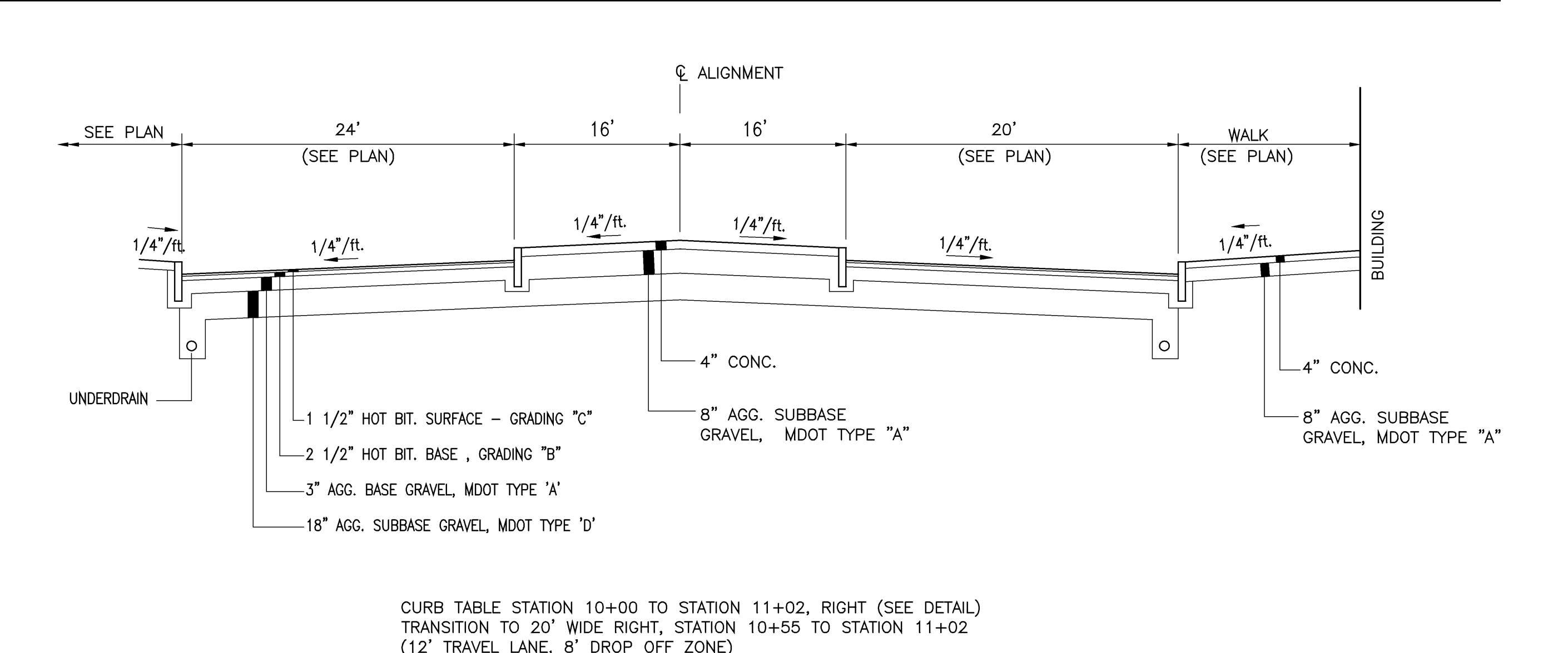
**REVENUE ISLAND**  
SCALE: NOT TO SCALE **12**



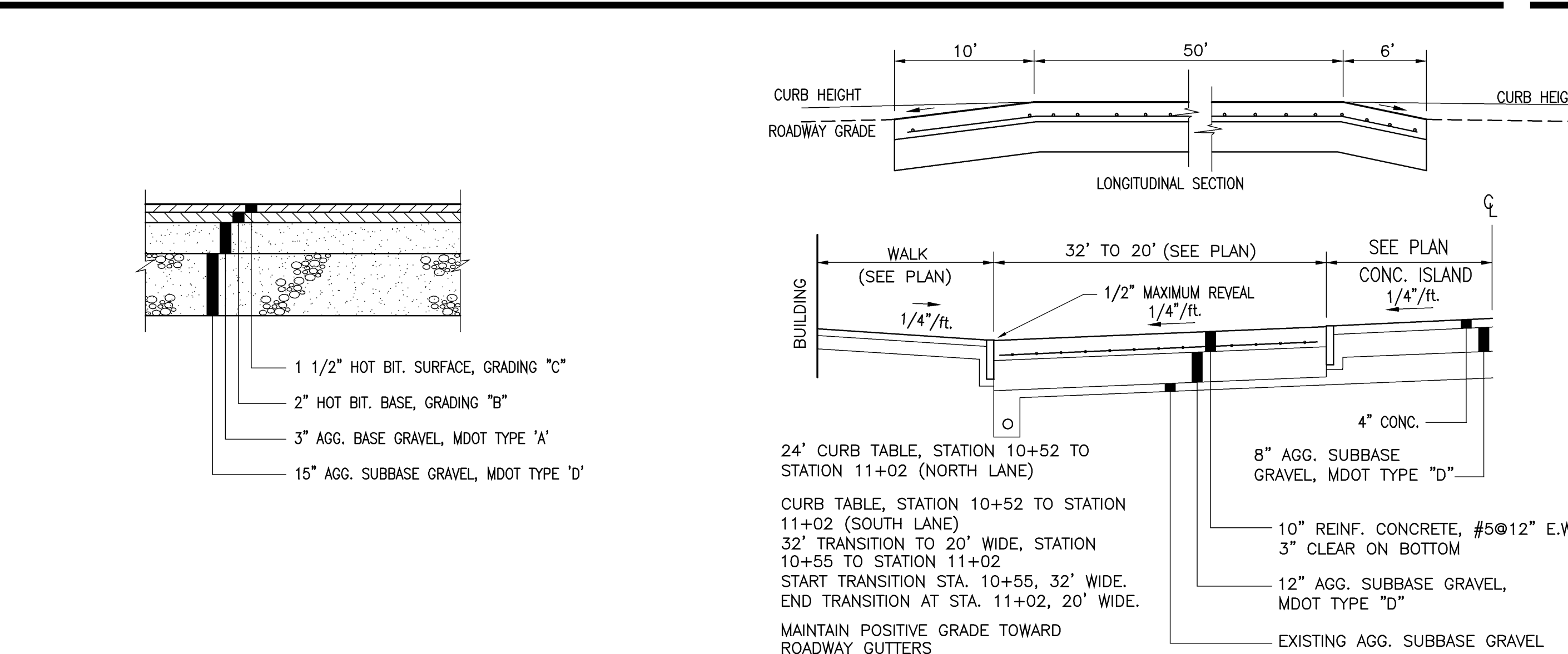
**ACCESS ROADWAY SECTION - STA. 3+07.8 THRU STA. 5+41.4**  
SCALE: NOT TO SCALE **1**



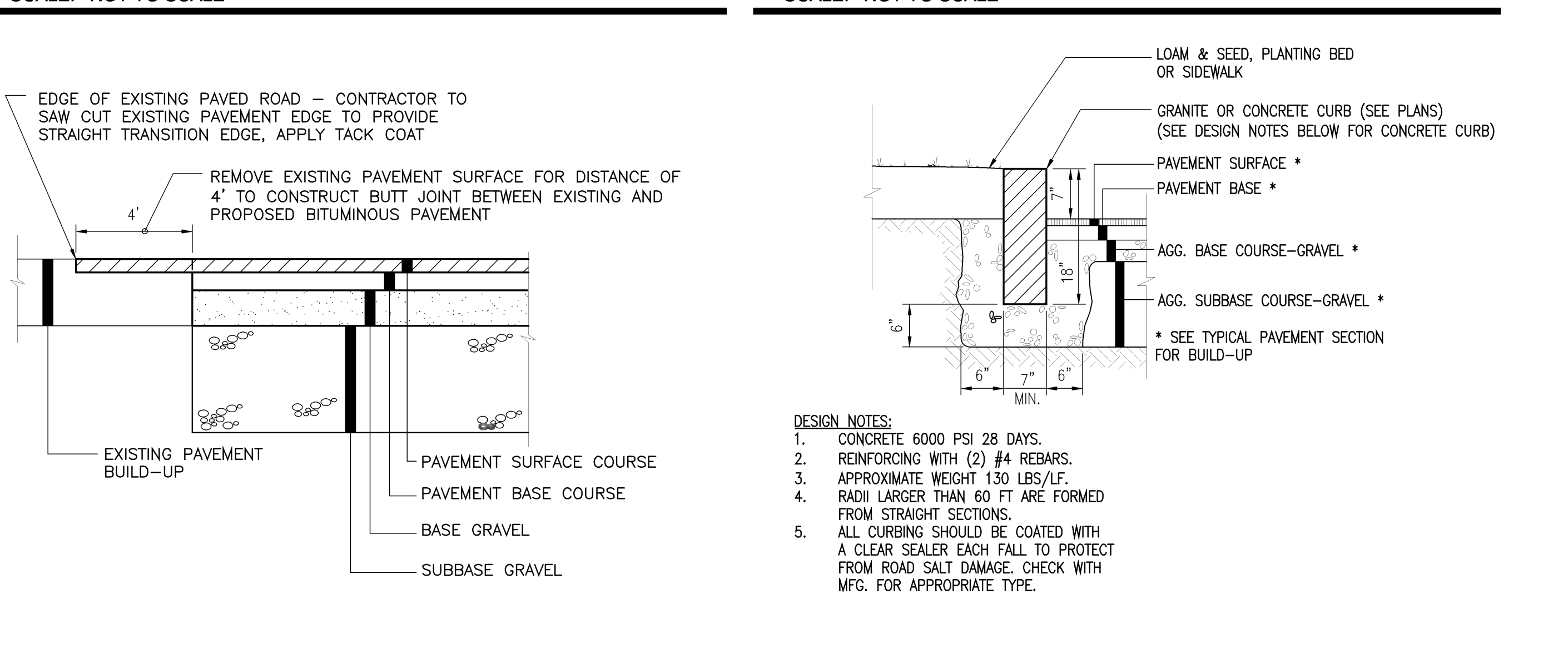
**ACCESS ROADWAY SECTION - STA. 6+10 THRU STA. 10+55**  
SCALE: NOT TO SCALE **2**



**ACCESS ROADWAY SECTION - STA. 11+02 THRU STA. 12+31**  
SCALE: NOT TO SCALE **3**



**ACCESS ROADWAY SECTION - STA. 11+02 THRU STA. 12+31**  
SCALE: NOT TO SCALE **3**



**PARKING PAVEMENT BUILDUP**  
SCALE: NOT TO SCALE **6**

**SHEET NOTES**

2020 K Street, NW  
Suite 200  
Washington, DC 20006  
Telephone 202.771.5200  
Facsimile 202.872.8557

**GENERAL NOTES**

Issue	Date & Issue Description	By	Check
1	09/22/08	W/W	A/W
2	12/03/08	W/W	A/W
3	01/23/09	W/W	A/W
4	10/26/09	W/W	FEM
5	11/12/09	W/W	FEM
6	05/03/10	W/W	TM
7	09/01/11	W/W	SDH

**GENERAL NOTES**

THESE DRAWINGS ARE ISSUED FOR CONSTRUCTION AND REFLECT ALL AMEC ISSUED BULLETINS AND SKETCHES.

DESIGN NOTES:  
1. CONCRETE 6000 PSI 28 DAYS.  
2. REINFORCING WITH (2) #4 REBARS.  
3. APPROXIMATE WEIGHT 130 LBS/SY.  
4. RADI LARGER THAN 60 FT ARE FORMED FROM STRAIGHT SECTIONS.  
5. ALL CURBING SHOULD BE COATED WITH A CLEAR SEALER EACH FALL TO PROTECT FROM ROAD SALT DAMAGE. CHECK WITH MFG. FOR APPROPRIATE TYPE.

**GENERAL NOTES**

PROJECT NAME  
P/W Terminal Enhancement

PROJECT NUMBER  
09.0395.000

CAD FILE NAME  
T:\5330101\SHEETS\C12.01.DWG

DESCRIPTION  
ROADWAY SECTIONS & DETAILS

SCALE  
AS NOTED

**GENERAL NOTES**

**Portland International Jetport**  
1001 Westbrook Street  
Portland, Maine 04102

**Gensler**

**AMEC ASSOCIATES, INC.**  
engineers • architects • surveyors • construction managers

**amec**

343 Gorham Road, South Portland ME 04106  
P: (207) 761-1770 F: (207) 774-1246 www.amec.com

**GENERAL NOTES**

**AMEC ASSOCIATES, INC.**  
engineers • architects • surveyors • construction managers

**amec**

343 Gorham Road, South Portland ME 04106  
P: (207) 761-1770 F: (207) 774-1246 www.amec.com

**GENERAL NOTES**

**AMEC ASSOCIATES, INC.**  
engineers • architects • surveyors • construction managers

**amec**

343 Gorham Road, South Portland ME 04106  
P: (207) 761-1770 F: (207) 774-1246 www.amec.com

**AMEC ASSOCIATES, INC.**  
engineers • architects • surveyors • construction managers

**amec**

343 Gorham Road, South Portland ME 04106  
P: (207) 761-1770 F: (207) 774-1246 www.amec.com

**AMEC ASSOCIATES, INC.**  
engineers • architects • surveyors • construction managers

**amec**

343 Gorham Road, South Portland ME 04106  
P: (207) 761-1770 F: (207) 774-1246 www.amec.com

**GENERAL NOTES**