

**BAGGAGE CONVEYOR LOADS:**

1. THE CONVEYOR ATTACHMENT METHODS REPRESENTED ON THESE DRAWINGS ARE FOR REFERENCE ONLY. THE BAGGAGE HANDLING SYSTEM CONTRACTOR IS REQUIRED TO SUBMIT CONVEYOR ATTACHMENT DETAILS INCLUDING LOADING CALCULATIONS BY A REGISTERED P.E. TO THE OWNER FOR REVIEW AND APPROVAL PRIOR TO COMMENCEMENT OF INSTALLATION.
2. ALL STRUCTURAL DESIGNS AND ATTACHMENTS SHALL COMPLY WITH ALL STATE, LOCAL AND NATIONAL GOVERNING CODES AND REGULATIONS. ALL CONVEYOR EQUIPMENT SHALL BE CAPABLE OF SUPPORTING A SINGLE CONCENTRATED LOAD OF 250 LBS.
3. THE CONTRACTOR SHALL INCLUDE VIBRATION ISOLATORS AS PART OF THE BASE BID. THE CONTRACTOR SHALL IDENTIFY A UNIT COST TO ADD INDIVIDUAL VIBRATION ISOLATORS TO SELECTED CONVEYORS DURING THE ENGINEERING PHASE. THE LIVE LOAD TO BE UTILIZED FOR SIZING DRIVES, BELTS, BEARINGS, ETC., SHALL BE 60 LBS/LIN. FT. FOR LOAD-ACCUMULATING CONVEYORS AND RUN-OUT CONVEYORS, 40 LBS/LIN. FT. AT A CONVEYOR SPEED OF 90 FPM ADJUSTED PROPORTIONAL TO SPEED OF ALL OTHER CONVEYORS.

**BHS SUPPORT ATTACHMENT:**

1. WHEN CONNECTING TO BUILDING STEEL USE BEAM CLAMPS SIZED FOR THE BOTTOM FLANGE OF THE BEAM. USE A (MIN.) 3/4" DIA. THREADED ROD FOR HANGING SUPPORT.
2. WHEN CONNECTING TO THE CONCRETE STRUCTURE USE EITHER A HILTI "RWIK BOLT" OR RAWLING "RAWL-STUD" IN SHEAR FOLLOWS. 1000 LBS LOAD USE MIN. 3/8" DIA. WITH 2-1/2" EMBEDMENT (MIN) 1500 LBS LOAD USE MIN. 1/2" DIA. WITH 3-1/2" EMBEDMENT (MIN) 2000 LBS LOAD USE MIN. 5/8" DIA. WITH 4" EMBEDMENT (MIN) MIN. SPACING 4" WITH 8" EDGE DISTANCE.

**MAINTENANCE PLATFORM GENERAL NOTES:**

1. THE MAINTENANCE PLATFORMS AND WALKWAYS THAT ARE SHOWN ON THESE DRAWINGS ARE INTENDED AS TYPICAL SCHEMATIC EXAMPLES OF WHERE PLATFORMS AND WALKWAYS ARE TO BE PROVIDED AND THE APPROXIMATE CONFIGURATION.
2. PROVIDE AND INSTALL MAINTENANCE PLATFORMS FOR MAINTENANCE PERSONNEL ACCESS TO THE ENTIRE BAGGAGE HANDLING SYSTEM AT ALL MAINTENANCE POINTS AND POTENTIAL BAGGAGE JAM LOCATIONS. PROVIDE AND INSTALL LADDERS TO ALLOW ACCESS TO ALL PLATFORMS.
3. SYSTEM MAINTENANCE POINTS INCLUDE BUT ARE NOT LIMITED TO:
  - a. ALL MOTOR/DRIVE LOCATIONS
  - b. ALL RETURN ROLLER LOCATIONS
4. POTENTIAL BAGGAGE JAM LOCATIONS INCLUDE BUT ARE NOT LIMITED TO:
  - a. ALL ENTRANCE AND EXIT POINTS ON POWER TURNS
  - b. ALL SEPARATIONS BETWEEN CONVEYORS (HEAD AND TAIL ENDS)
5. REFER TO SPECIFICATION FOR MAINTENANCE PLATFORMS AND WALKWAYS REQUIREMENTS AND CRITERIA.

**LOADING DIAGRAM NOTES:**

1. DURING THE DETAIL DESIGN PERIOD, THE FOLLOWING LOADS WERE SUPPLIED TO THE STRUCTURAL ENGINEER FOR USE IN DETERMINING THE LOADS GENERATED BY THE CONVEYOR EQUIPMENT (STATIC AND DYNAMIC COMBINED). DURING THE BIDDING PERIOD, PROVIDE AND CLEARLY IDENTIFY ANY CONVEYOR EQUIPMENT LOADING REQUIREMENTS MORE STRINGENT THAN WHAT IS SHOWN IN THESE DOCUMENTS THAT MAY BE ESSENTIAL FOR EQUIPMENT CONNECTIONS TO THE BUILDING STRUCTURE.
- |                                  |                  |
|----------------------------------|------------------|
| STANDARD CONVR. BED SECTION      | 100 LBS/LIN. FT. |
| OS CONVR. BED SECTION AND MERGES | 150 LBS/LIN. FT. |
| CONVR. DRIVE                     | 1,000 LBS EA.    |
| MINI CONVR. DRIVE                | 850 LBS EA.      |
| POWER TURN 45°                   | 850 LBS EA.      |
| POWER TURN 90°                   | 1,300 LBS EA.    |
| POWER TURN 180°                  | 2,500 LBS EA.    |
| PLATFORM                         | 65 LBS/SQ FT.    |
| MAKE-UP DEVICE                   | 200 LBS/LIN. FT. |

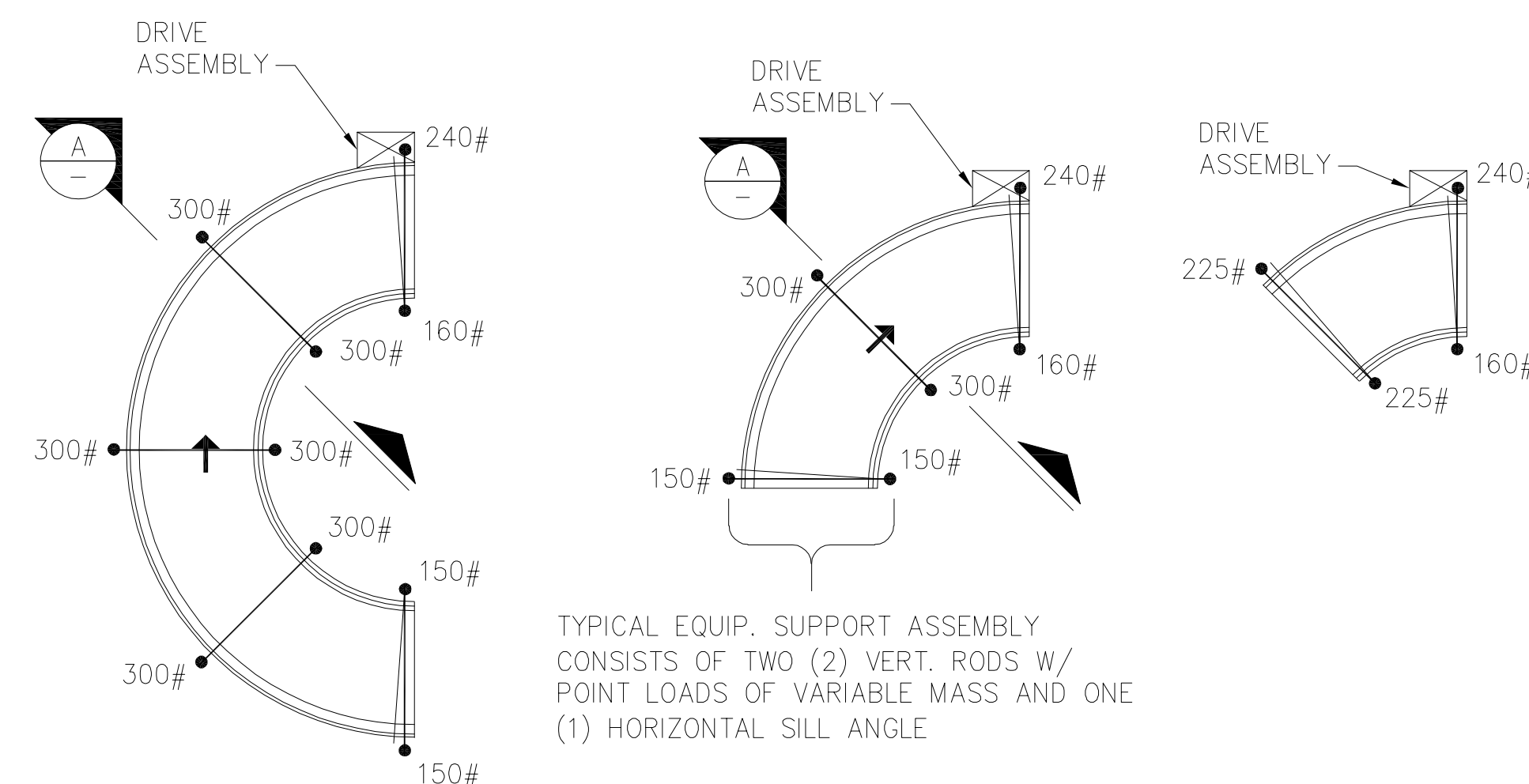
2. THE CONVEYOR SUPPORT POINT LOADING PLACEMENT AND CONFIGURATION SHOWN IS REPRESENTATIVE OF ONE POSSIBLE CONFIGURATION. THIS DIAGRAMMATIC VIEW IS PROVIDED FOR USE BY THE STRUCTURAL ENGINEER IN DETERMINING ALL LOADS IMPOSED BY THE NEW BAGGAGE EQUIPMENT AND ASSOCIATED SERVICES. OTHER CONFIGURATIONS MAY BE PROVIDED.

3. PROVISION OF THE BAGGAGE EQUIPMENT CONTRACTOR SHALL PROVIDE SPECIFIC DETAIL SUPPORT DESIGN FOR ALL BUILDING STRUCTURE CONNECTIONS AND ALL VERTICAL SUPPORT MEMBER CONNECTIONS TO FLOOR SLAB AND BUILDING STRUCTURE.

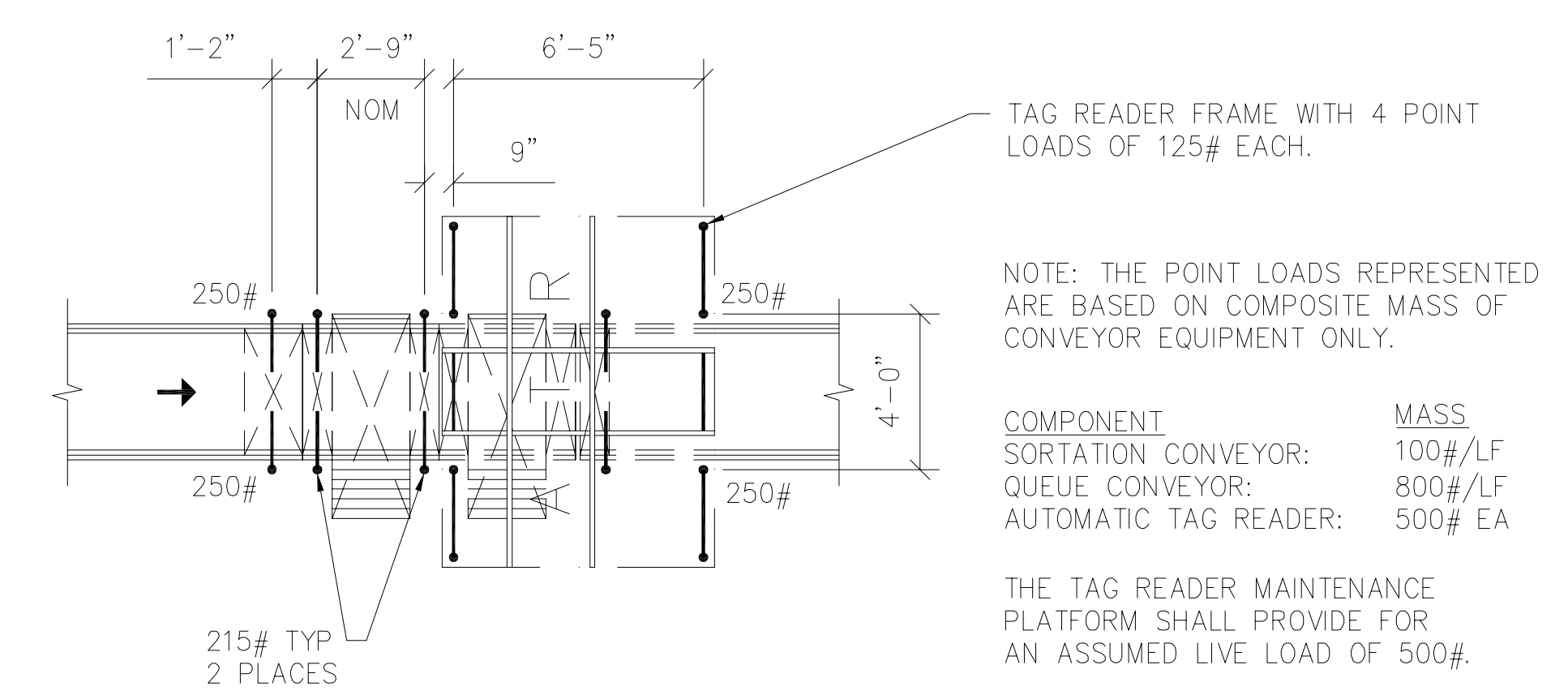
4. THE FINAL STRUCTURAL SUPPORT DESIGN SOLUTION IS THE RESPONSIBILITY OF THE BAGGAGE EQUIPMENT CONTRACTOR AND SHALL BE COORDINATED WITH AND APPROVED BY THE BHS CONTRACTOR'S PROFESSIONAL PROJECT ENGINEER.

5. THE BAGGAGE EQUIPMENT SUPPLIER IS RESPONSIBLE FOR THE DESIGN AND STRUCTURAL INTEGRITY OF ALL BOLTS, HANGERS, SUPPORT MEMBERS, ETC., AND IS TO PROVIDE ALL NECESSARY MATERIALS REQUIRED FOR INSTALLATION.

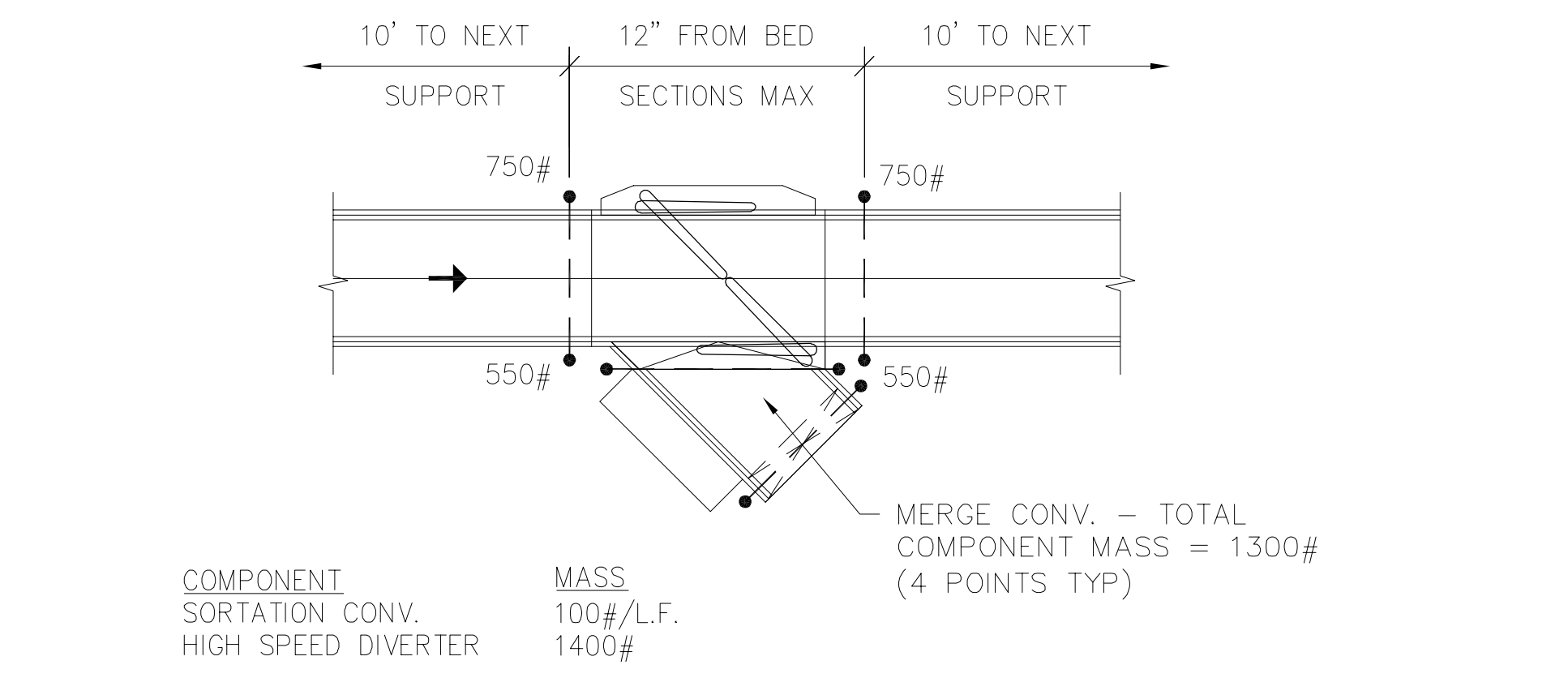
SYMBOL	DESCRIPTION
	CEILING-SUPPORTED CONVEYOR SILL ASSEMBLY (TYP. +7'-6" AND ABOVE)
	FLOOR-SUPPORTED CONVEYOR PEDESTAL ASSEMBLY (TYP. +7'-6" AND BELOW)
	CONCENTRATED POINT LOAD (AT SUPPORT LOCATIONS)



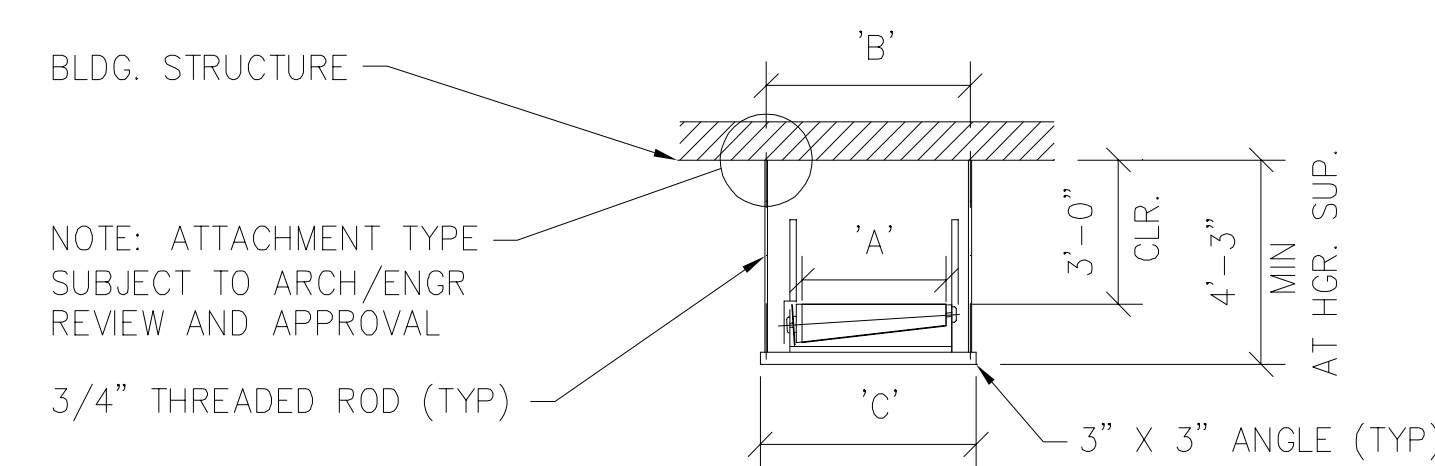
**4** DETAIL PLAN-POWER TURNS STANDARD SUPPORT  
B12.00 1/4" = 1'-0"



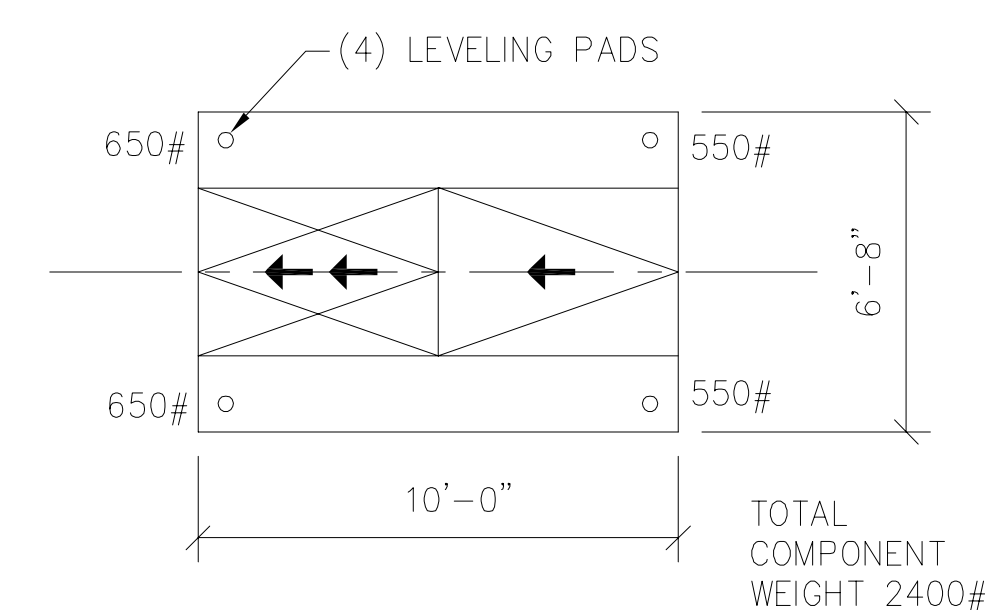
**6** DETAIL PLAN-LASER SCANNER ARRAY STANDARD SUPPORT LOADS  
B12.00 1/4" = 1'-0"



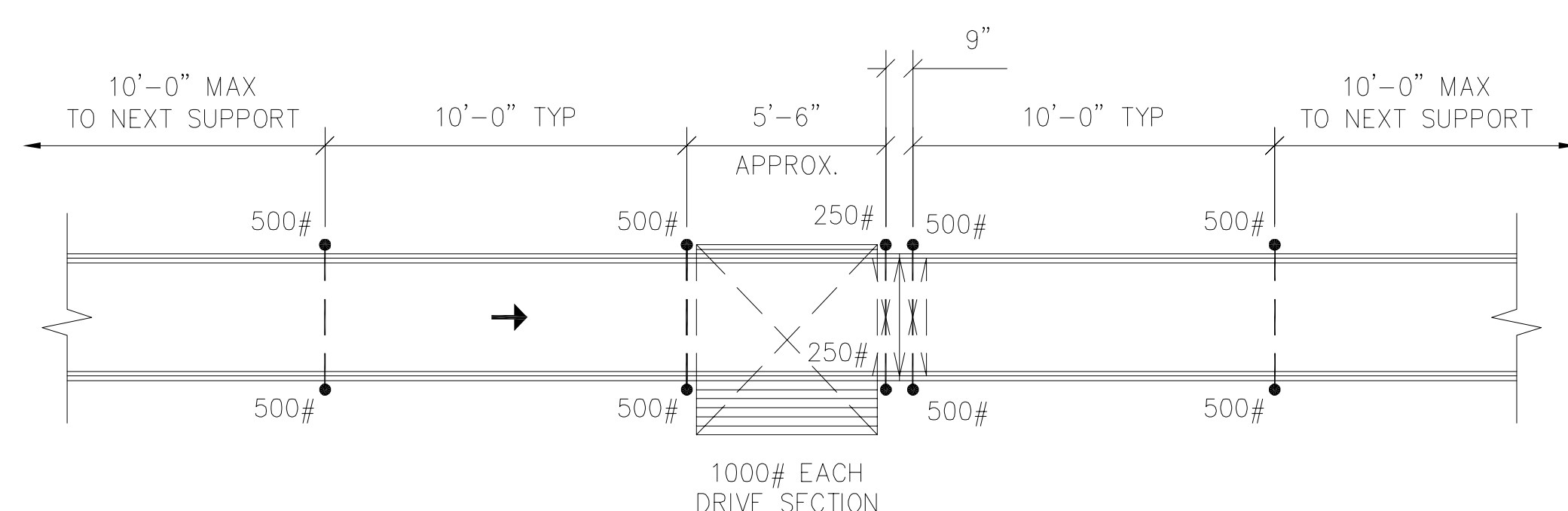
**8** DETAIL PLAN-HIGH SPEED DIVERTER WITH 45 DEGREE TAKE AWAY CONVEYOR  
B12.00 1/4" = 1'-0"



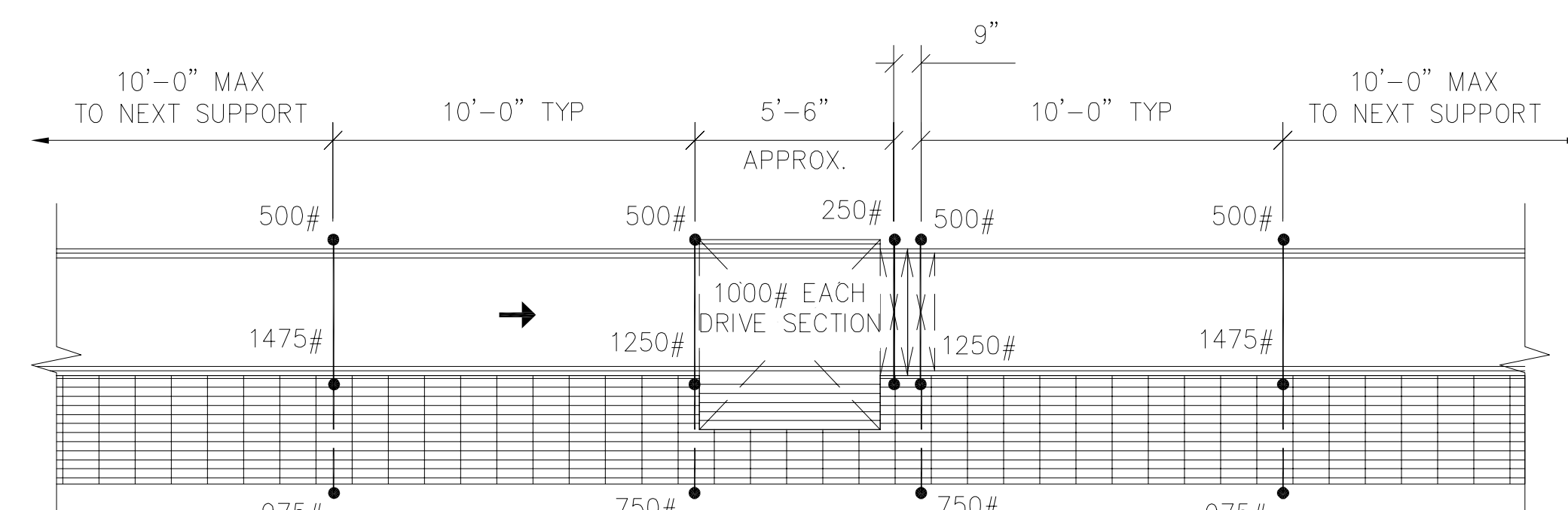
**5** DETAIL SECTION-POWER TURNS STANDARD SUPPORT  
B12.00 1/4" = 1'-0"



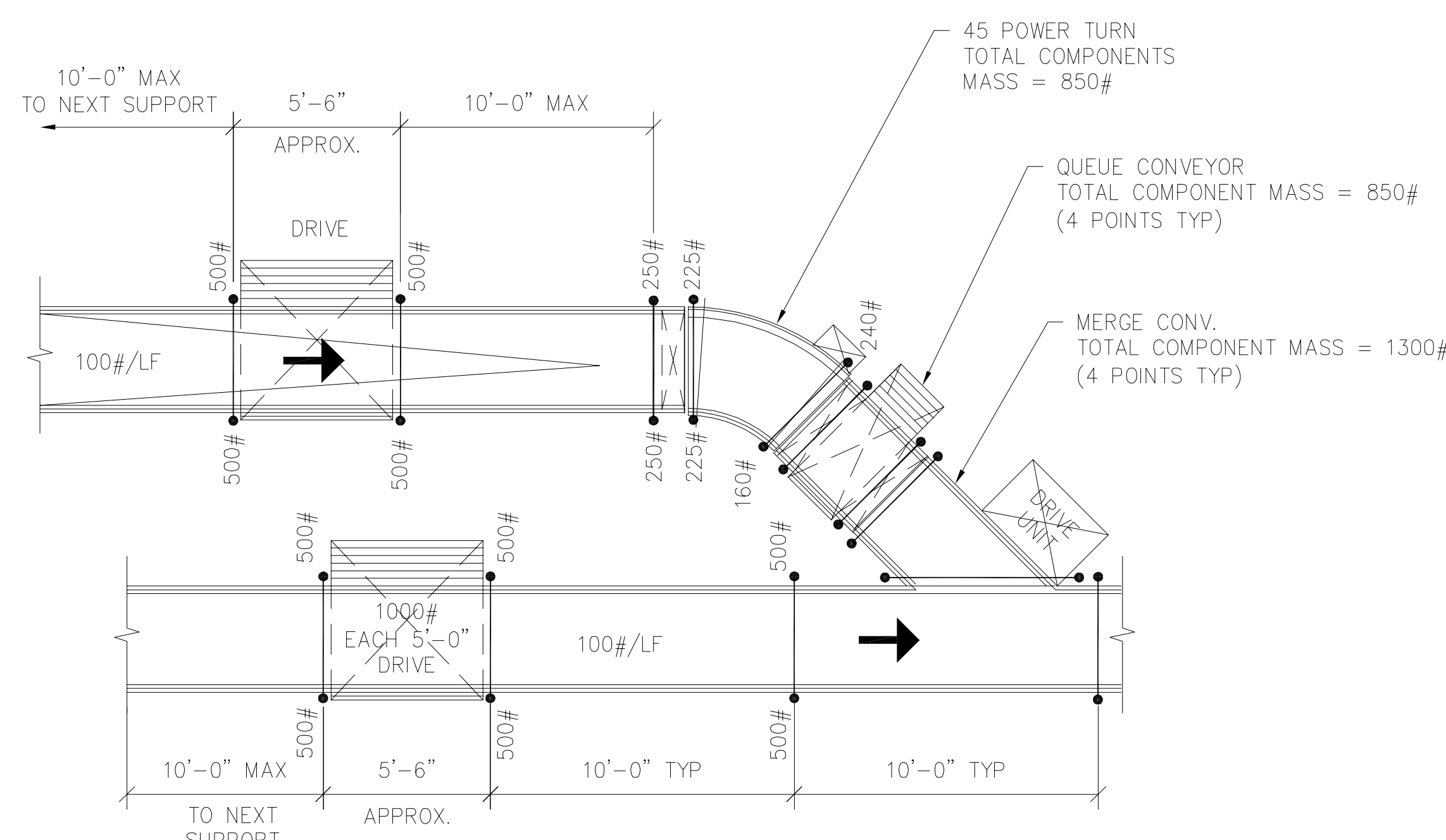
**7** DETAIL PLAN-VERTICAL SORTATION DEVICE POINT LOADS  
B12.00 1/4" = 1'-0"



**1** DETAIL PLAN-SINGLE LEVEL CONVEYOR SUPPORT  
B12.00 1/4" = 1'-0"

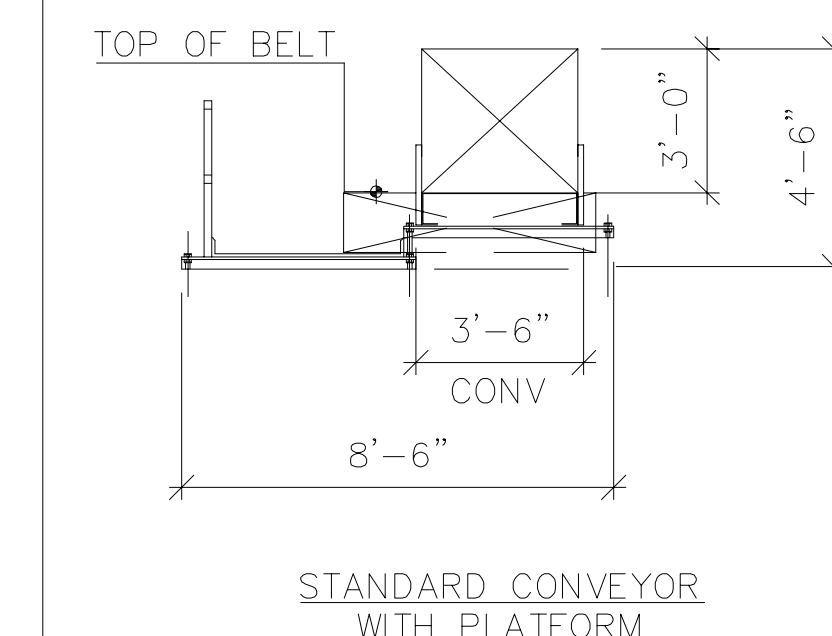
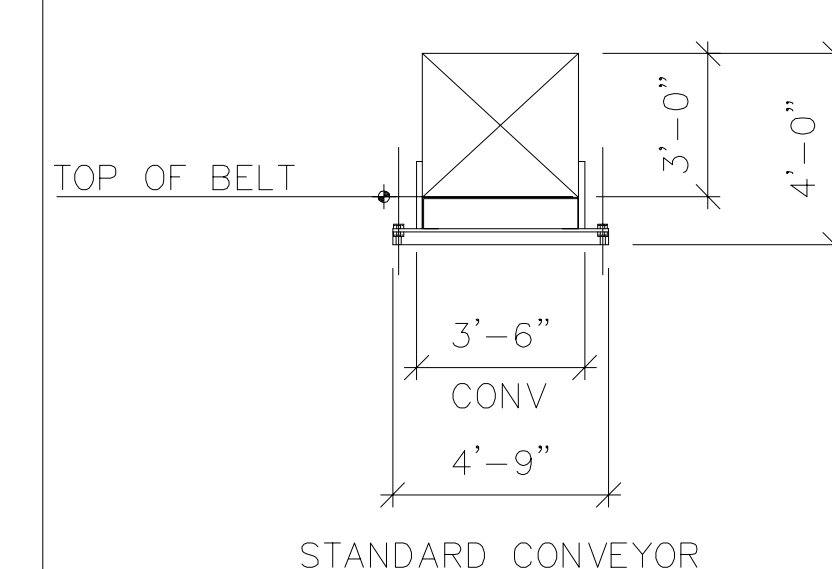


**2** DETAIL PLAN-SINGLE LEVEL CONVEYOR SUPPORT WITH PLATFORM  
B12.00 1/4" = 1'-0"



**3** DETAIL PLAN-SUPPORT LOAD FOR CONVEYOR MERGE  
B12.00 1/4" = 1'-0"

**LEGEND**



**SPECIFICATIONS AND BHS DRAWINGS SHALL**

CHECK AND FIELD VERIFY ALL BHS RELATED DIMENSIONS ON THE JOB SITE BEFORE PROCEEDING WITH WORK, AND BE RESPONSIBLE FOR THEIR ACCURACY. IF DISCREPANCIES ARE FOUND BETWEEN THE BHS DRAWINGS, SPECIFICATIONS AND FIELD CONDITIONS, THEY SHALL BE REPORTED TO

NO DIMENSIONS SHALL BE SCALED, DRAWINGS DIMENSIONS SHOWN SHALL BE USED.

REFERENCE STRUCTURAL DRAWINGS FOR BEAM LOCATIONS.

FOR ADDITIONAL BHS RIGHT-OF-WAY DETAILS SEE B12 SERIES.

ALL TICKET COUNTERS AND BAG WELL SCALES NOT BY BHS CONTRACTOR.

BHS CONTRACTOR TO COORDINATE WITH ALL OTHER TRADES TO MAINTAIN BAGGAGE SYSTEM RIGHT-OF-WAY.

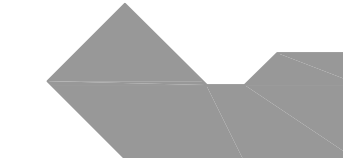
ALL DIMENSIONS ARE FROM COLUMN CENTER LINE TO FACE OF CONVEYOR SIDE GUARD, UNLESS OTHERWISE NOTED.

ALL OTHER TRADES TO MAINTAIN 3'-0" CLEAR RIGHT-OF-WAY FROM TOP OF BELT TO NEAREST OBSTRUCTION. HANGING OF ANY EQUIPMENT COMPONENTS MECHANICAL, ELECTRICAL, PLUMBING, HVAC... FROM THE CONVEYOR, CATWALK OR ASSOCIATED SUPPORTS IS NOT

I. ALL BHS RIGHT-OF-WAY SHALL TAKE PRECEDENCE OVER ALL OTHER BUILDING SERVICES (MECHANICAL DUCT WORK AND PIPES, ELECTRICAL CONDUIT, SECURITY CONDUIT, FIRE PROTECTION PIPING, PLUMBING PIPES, ETC.)

J. ALL FINISHED FLOOR DIMENSIONS ARE TAKEN FROM THE HIGH POINT OF THE FINISHED FLOOR.

**KEY PLAN**



**Portland International Jetport**

1001 Westbrook Street  
Portland, Maine 04102

**Gensler**

2020 K Street, NW  
Suite 200  
Washington, DC 20006  
Telephone 202.771.5200  
Facsimile 202.872.8587

**BNP ASSOCIATES, INC.**

PHONE: 203.792.3000  
FAX: 203.792.4900  
BNPHQ@BNPASSOCIATES.COM

101 EAST RIDGE OFFICE PARK  
SUITE 103  
DANBURY, CT 06810 USA

Issue	Date	Issue Description	By	Check
01	7/15/09	ISSUED FOR TSA 30% SUBMITTAL	BNP	JWIKS
02	9/15/09	ISSUED FOR TSA 70% SUBMITTAL	BNP	JWIKS
03	10/26/09	ISSUED FOR PERMIT	BNP	JWIKS

See Signature

PROJECT NAME  
PJM Terminal Expansion

PROJECT NUMBER  
09.6395.000  
CAD FILE NAME  
B12.00.dwg  
DESCRIPTION  
BAGGAGE HANDLING SYSTEM - CONVEYOR LOAD DIAGRAMS

Scale

**B12.00**