

**Portland International
Jetport**
1001 Westbrook Street
Portland, Maine 04102

Gensler
2020 K Street, Northwest
Suite 200 DC 20006
Washington, DC 20004
Telephone 202.221.5500
Facsimile 202.872.8587

SM&W
3000 N. Fairfax Drive
Suite 302
Arlington, Virginia 22201
Telephone 703.246-8904
Facsimile 703.246-8904
www.smwinc.com

SHEN MILSON WILKE

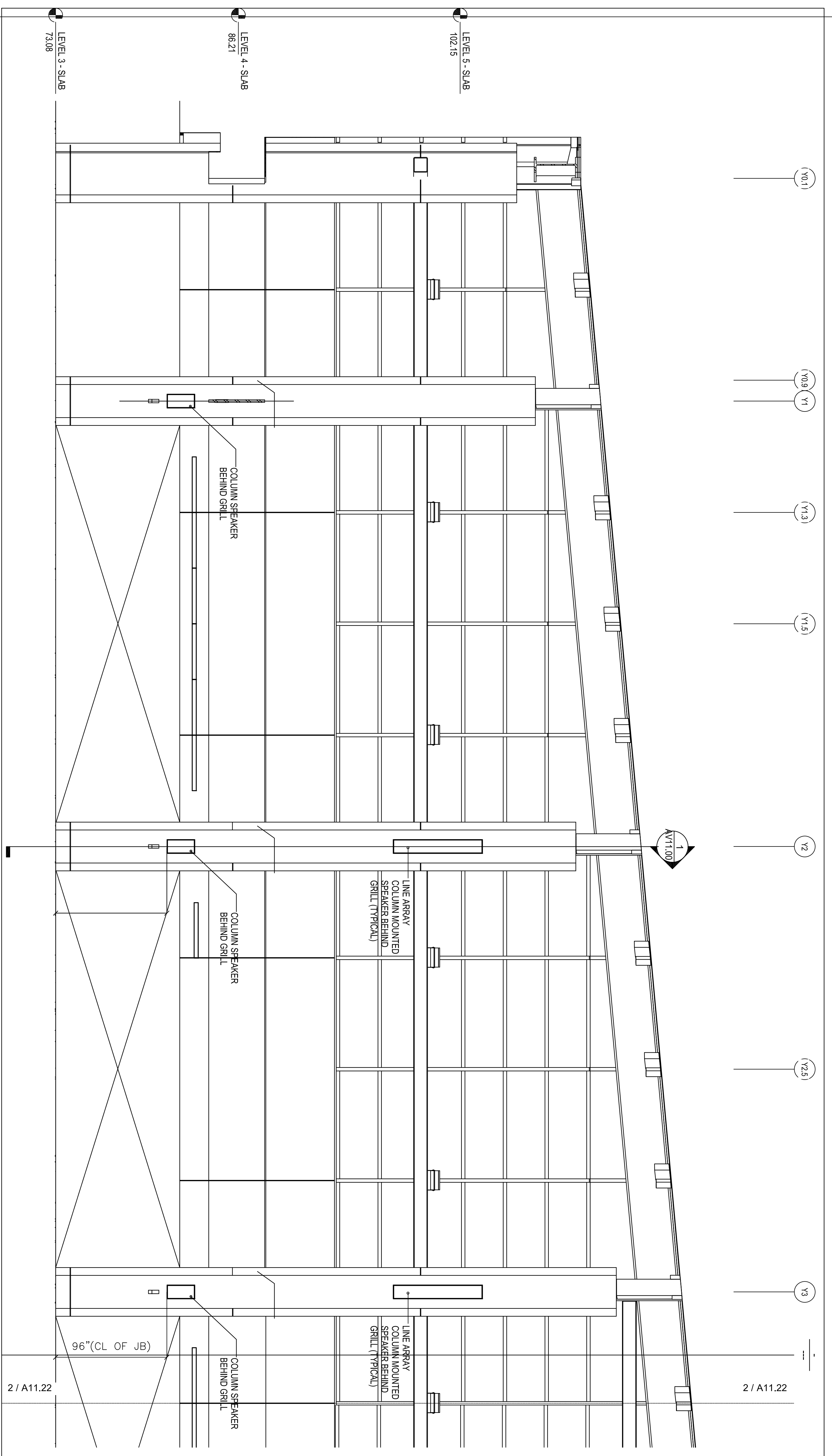
| Issue | Date & Issue Description | By | Check |
|-------|---|----|-------|
| 1 | 12/20/08 CONSTRUCTION DOCUMENTS | | |
| 2 | 1/20/09 PROGRESS ISSUE | | |
| 3 | 01/22/09 95% CONSTRUCTION DOCUMENTS | | |
| 4 | 10/20/09 PROGRESS ISSUE | | |
| 5 | 08/17/11 ISSUED FOR PERMIT | | |
| 145 | 6/08/17/2011 ISSUED FOR CONSTRUCTION | | |

Scale: As Indicated

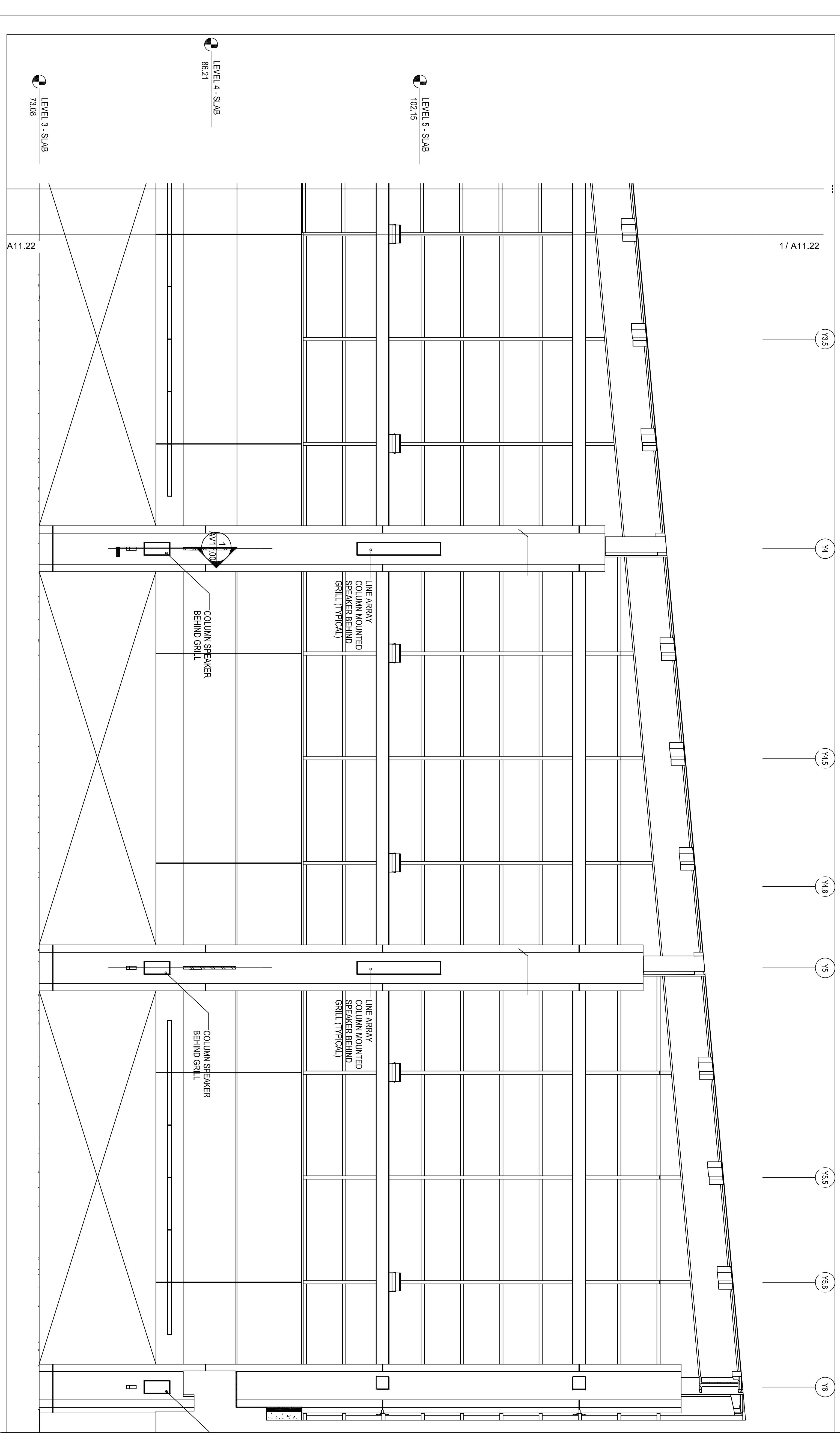
Project Name: PVI/T TERMINAL EXPANSION
 Project Number: 08.65395.000
 CAD File Name: AVI11.00
 Description: AUDIOWISUAL ELEVATIONS - LEVEL 3

AVI11.00

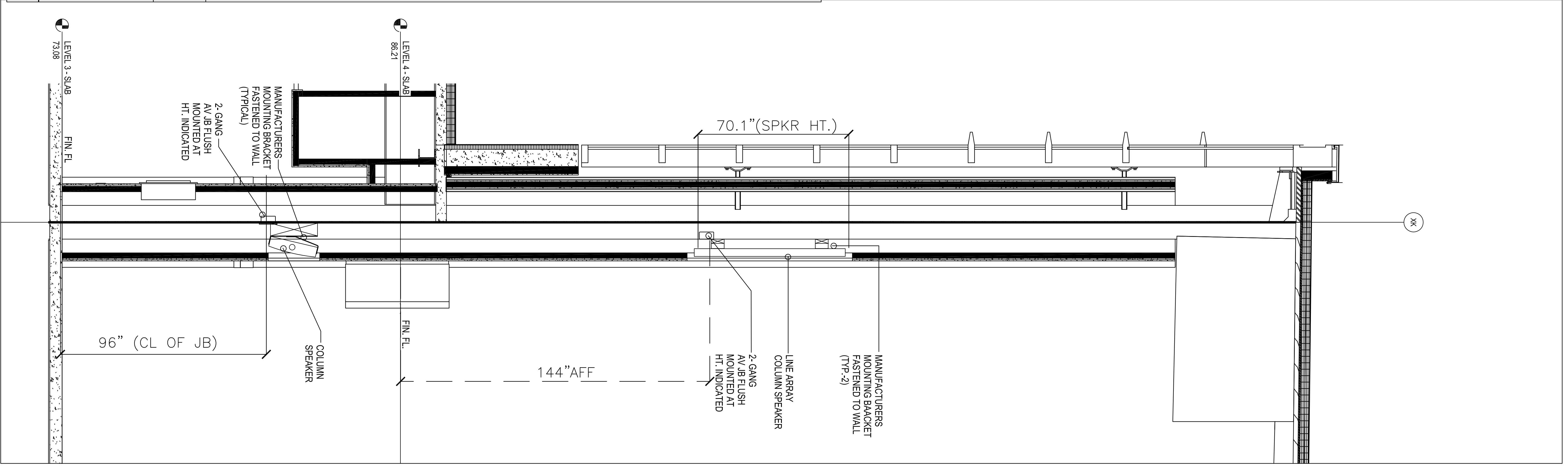
©2008 Gensler



SECURITY SCREENING LEVEL - SOUTH-SPEAKER MOUNTING LOCATIONS - ELEVATION 3
 SCALE: 1/4" = 1'-0"



SECURITY SCREENING LEVEL - SOUTH - CONT - SPEAKER MOUNTING LOCATIONS - ELEVATION 2
 SCALE: 1/4" = 1'-0"



SECTION - 1 - SPEAKER AND JB MOUNTING DETAIL
 10/21/03.04

KEY PLAN